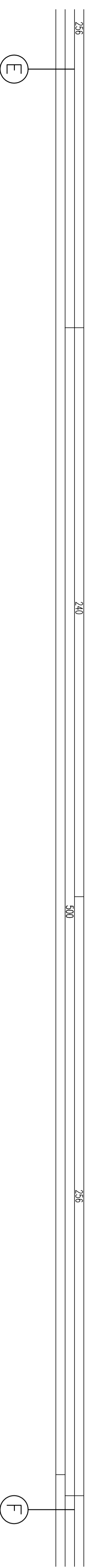
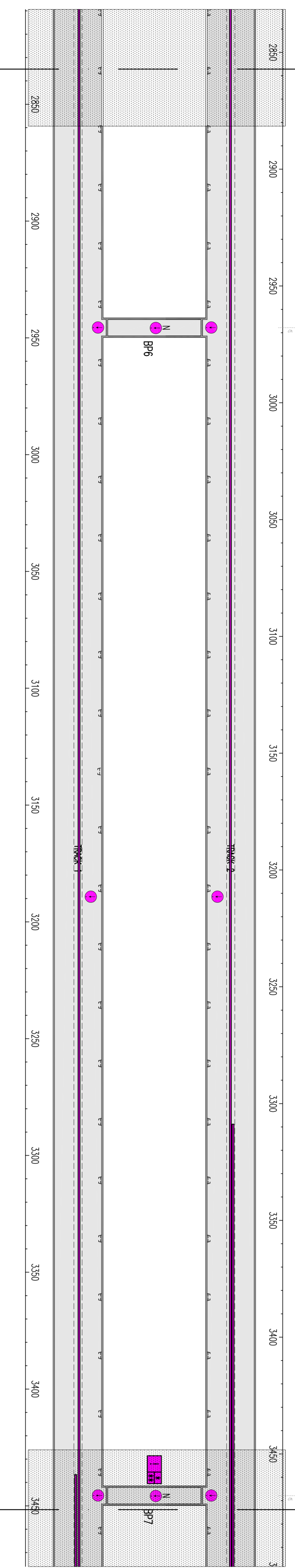
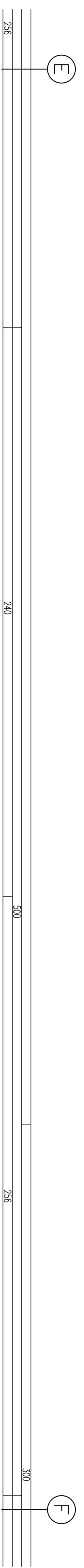
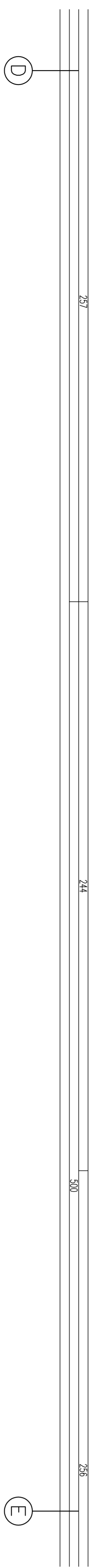
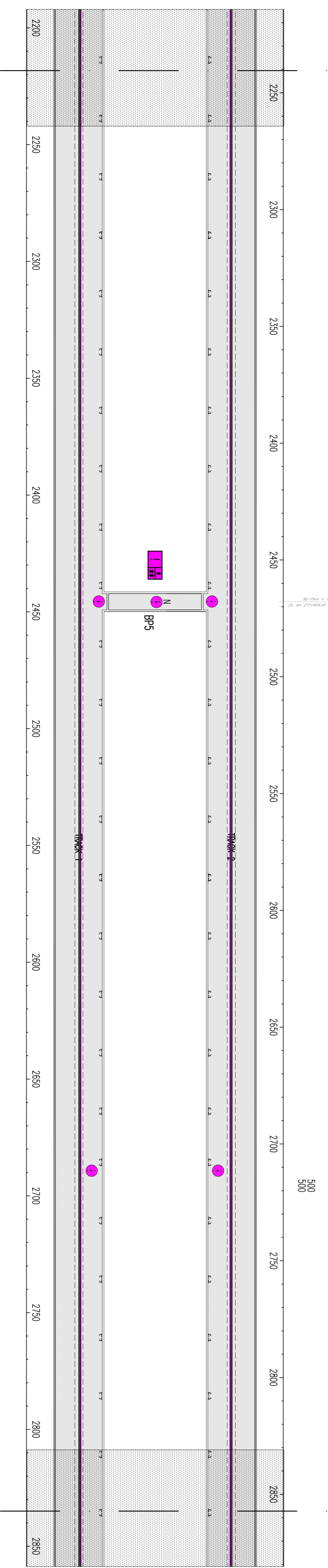
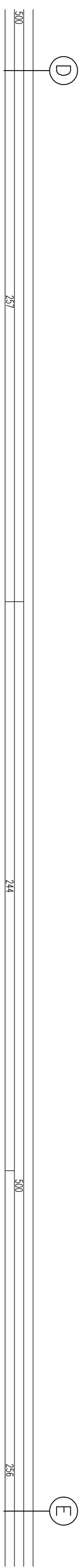
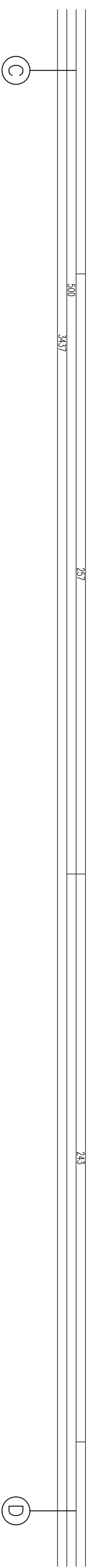
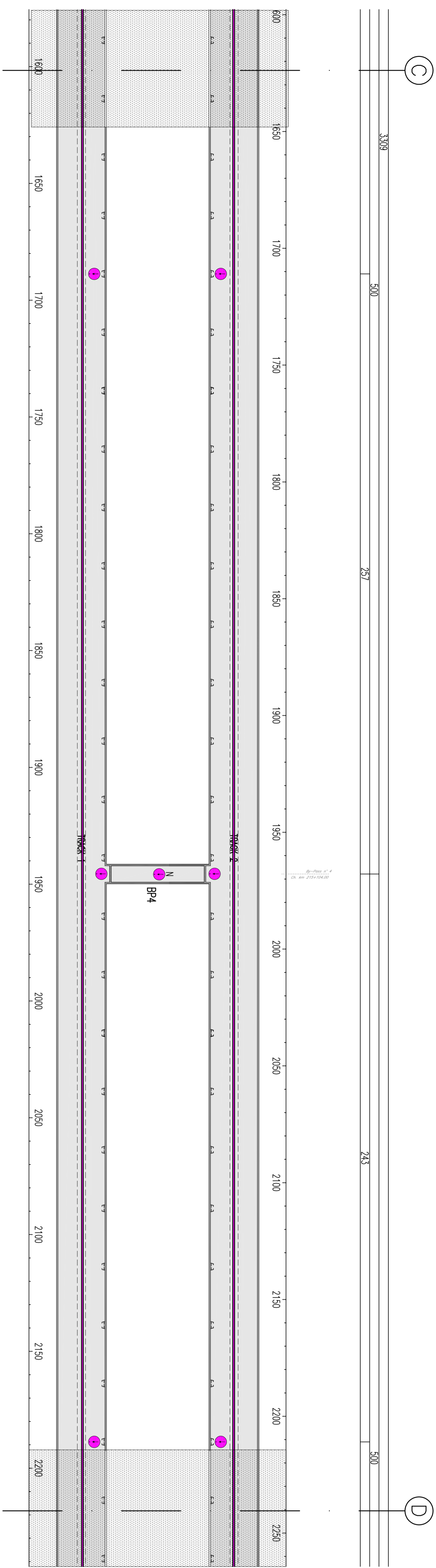
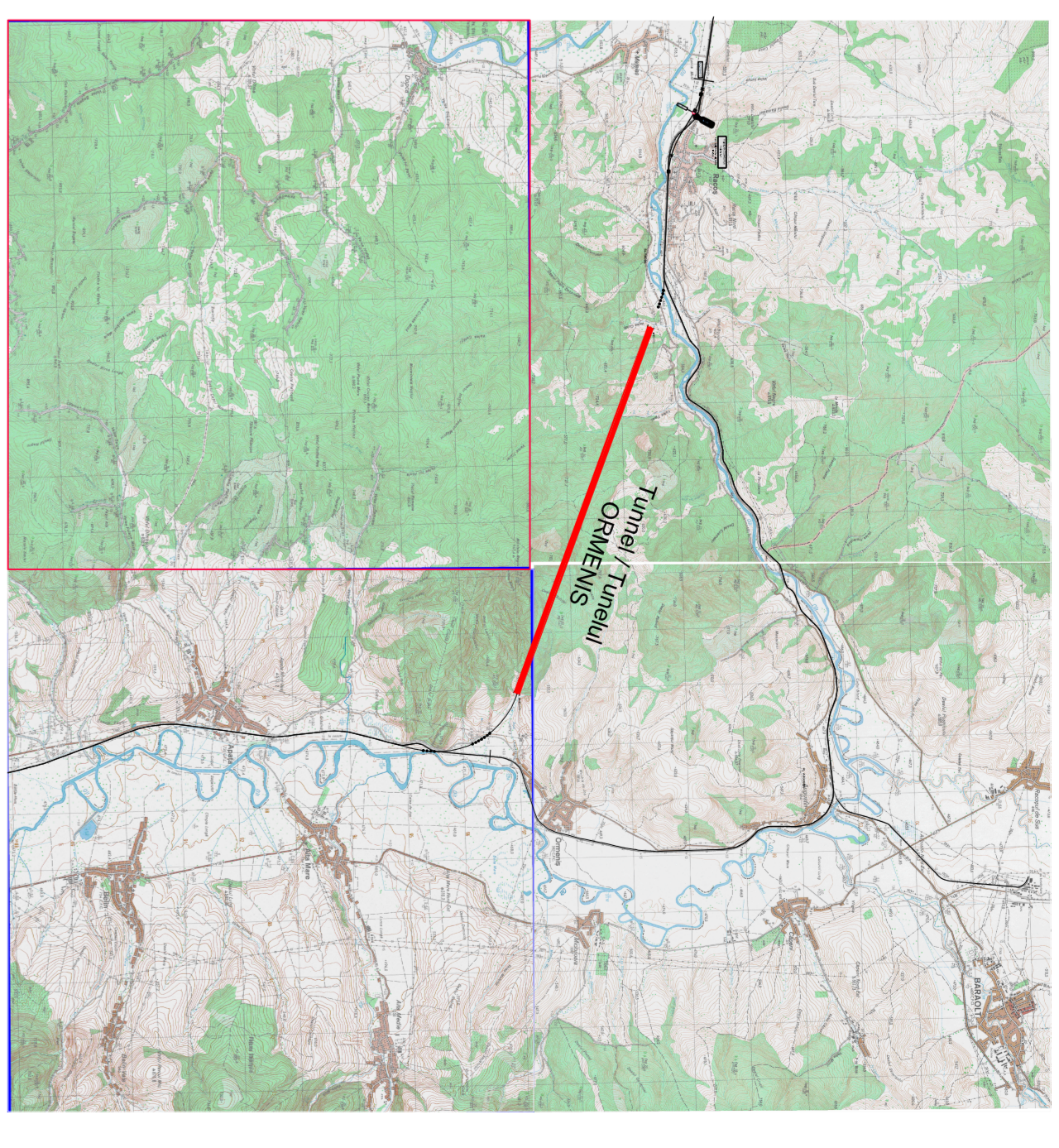


GENERAL PLAN / PLANUL GENERAL



**SYMBOLS LEGEND/LEGENDA SIMBOLURI**

	OPTICAL CABLE FOR FIRE DETECTION/CABLU OPTIC/PENTRU DETECTARE A INCENDIULUI
	SENSOR DETECTION SMOKE/SENZOR DE DETECTARE A FUMULUI
	ZONE FIRE DETECTION UNIT/SENZOR DE DETECTARE A INCENDIULUI A ZONA
	FIRE DETECTION UNIT FOR OPTICAL SENSOR CABLE/SENZOR DE DETECTARE A INCENDIULUI PENTRU CABLU SENZOR OPTIC

NOTE:  
- AREA SHOWN IN THE NEXT / PREVIOUS SHEET  
- ZONA PREZENTATA IN PACHETUL URMATOR / ANTERIORA

D									
C									
B									
A									

**GOVERNUL ROMANIEI**  
**ROMANIA**  
**MINISTERUL INFRASTRUCTURII SI TRANSPORTURILOR**  
**PROIECT FINANAT DE UNIUNEA EUROPEANA**  
**SPRE PLANUL DE INCALZIRE SI RACIRE**

**CFR**  
**C.N.C.F. "C.F.R." - S.A.**

**CLIENT / CLIENT**  
**CONSULTANT / CONSULTANT**  
**SUBCONSULTANT / SUBCONSULTANT**

**TECHNIC**  
**OBREMAYER**  
**WILSON**  
**TRUEN**

Reabilitarea liniei de cale ferata Buzov - Sarnata, partea componenta a coridorului IV Pan European, pe tronsonul Sarnata - Sighisheara  
 Rehabilitation of the railway line Buzov - Sarnata, component part of the IV Pan-European Corridor, for the train circulation with maximum speed of 160 km/h.  
 Part-European Corridor, for the train circulation with maximum speed of 160 km/h.  
 Part-European Corridor, for the train circulation with maximum speed of 160 km/h.  
 Part-European Corridor, for the train circulation with maximum speed of 160 km/h.

Denumire desen / Drawing Title : **TUNELUL CATERINEL**  
 Project/Project : **TUNELUL CATERINEL**  
 Date : **2023/07/26/2023**  
 P.11 / T.1

Layer plus security system fire detection/Intrus detection system  
 Security system/Intrus detection system

Scale: 1:500  
 Scale: 1:500  
 Scale: 1:500

E A S I 0 1 C 1 0 L X T S 1 0 1 2 0 1 0 0