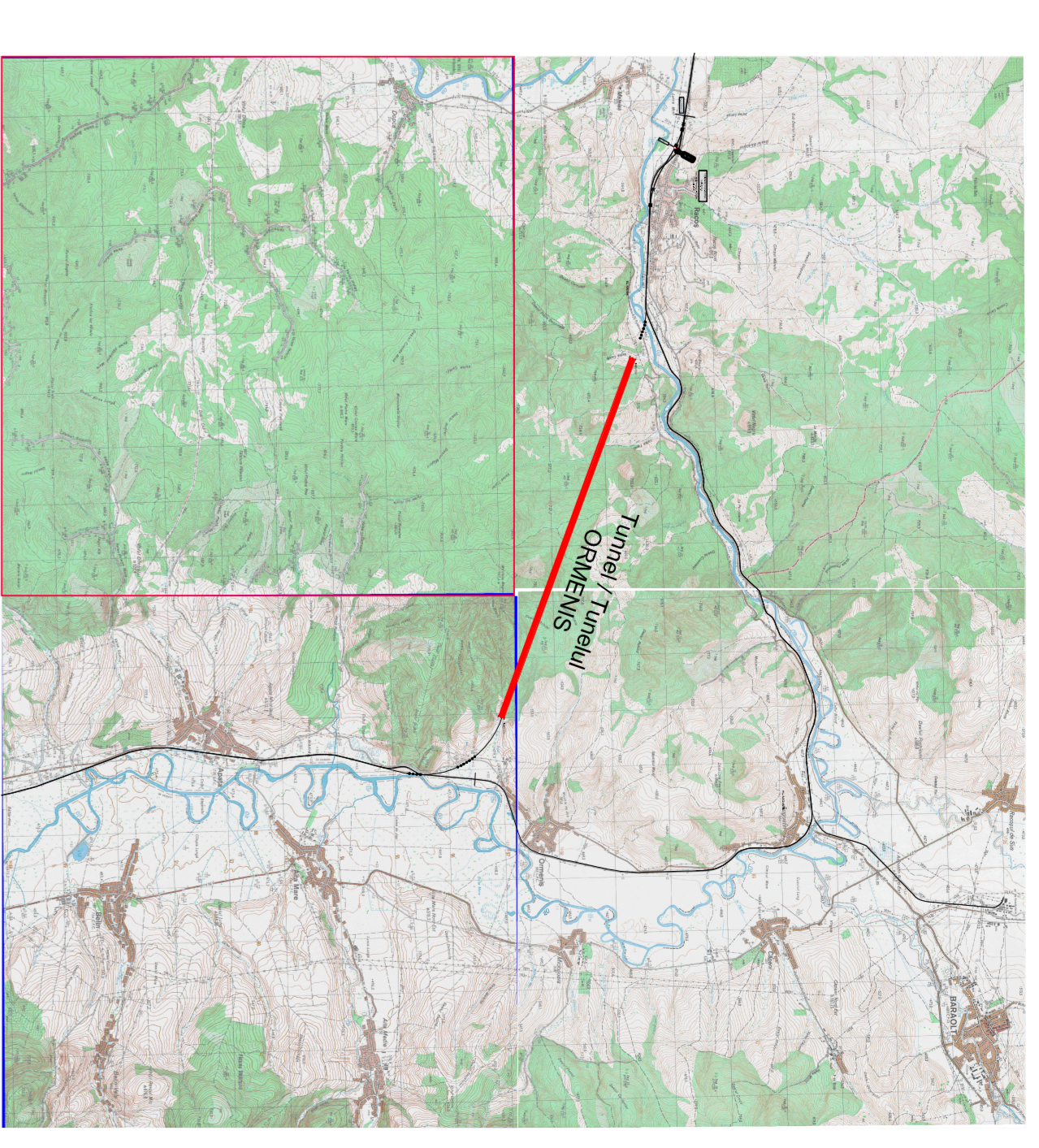
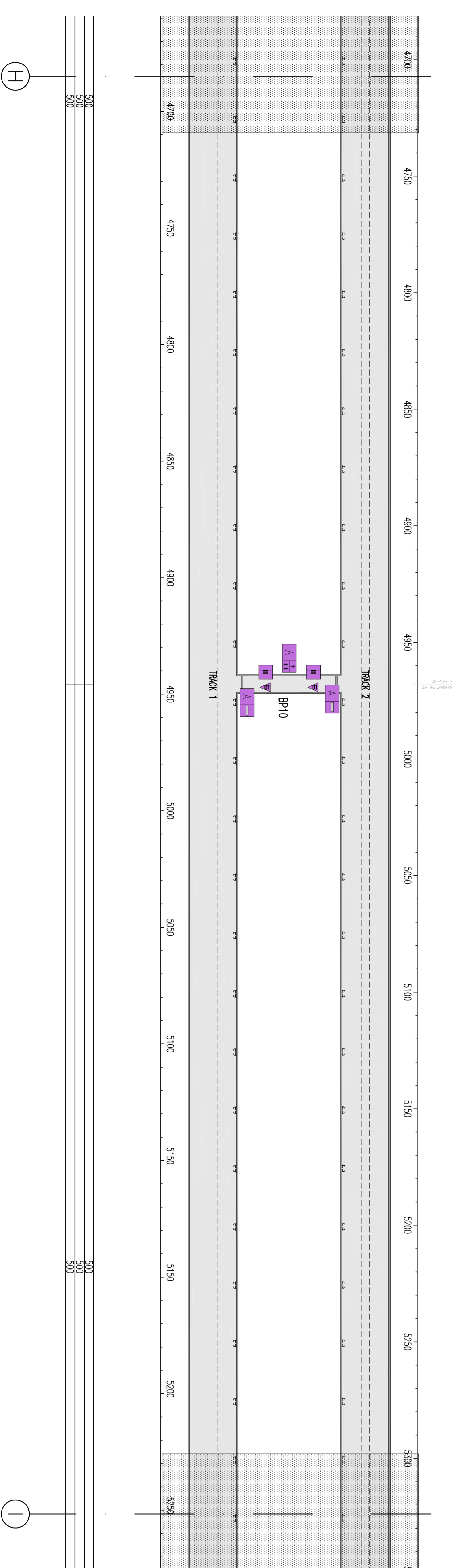
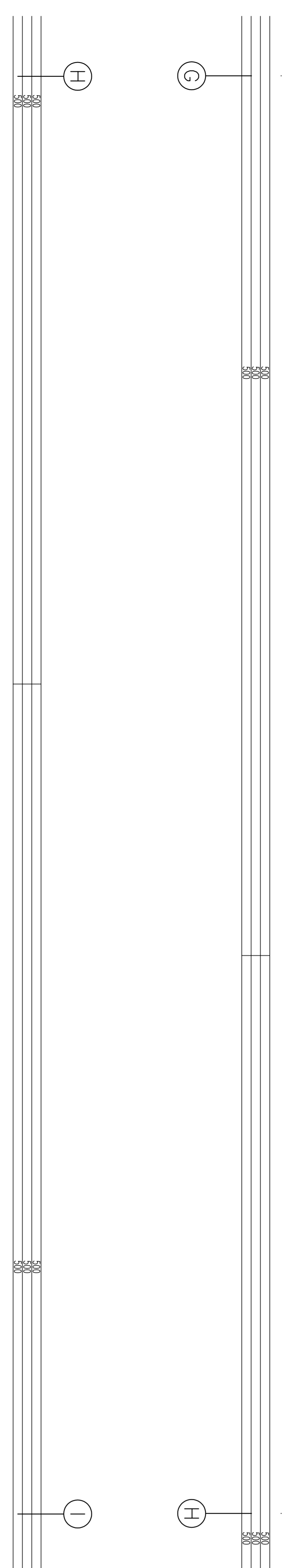
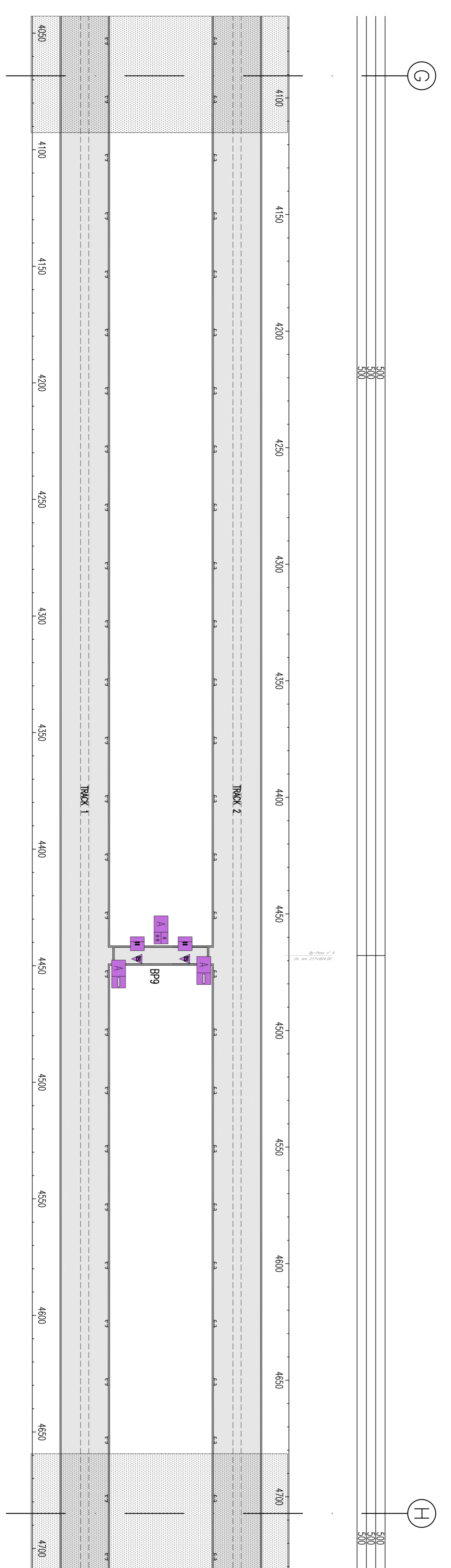
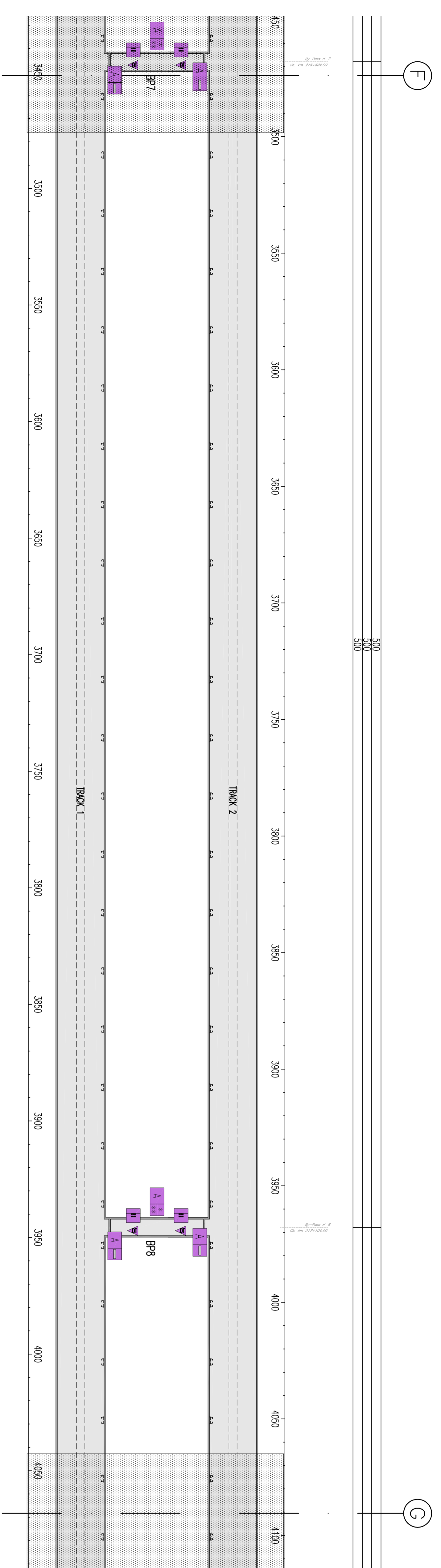


GENERAL PLAN / PLANUL GENERAL



**SYMBOLS LEGENDA / LEGENDA SIMBOLURI**

	ON/OFF ALARM POINT WITH BUZZER/PUNCTUL ACIONAREA - OPTICAL ALARMA CU BUZZER
	ACCESS CONTROL AND INTRUSION DETECTION UNIT/CENTRAL DE CONTROL AL ACCESUL SI DE DETECTIE A INTRUSIUNILOR
	VOLUMETRIC DUAL TECHNOLOGY SENSOR/SENSOR VOLUMETRIC DUALA TEHNOL.
	STATE DOOR DETECTOR/DETECTOR STATI USA



NOTE:  
- AREA SHOWN IN THE NEXT / PREVIOUS SHEET  
- ZONA PREZENTATA IN PACHETUL URMATOARE / ANTERIOARA

**CLIENT / CLIENT**  
CFR  
C.N.C.F. "C.F.R." - S.A.

**CONSULTANT / CONSULTANT**  
SOSAT  
WILSON  
OBERMEYER  
RUBEN BERENSON GERT  
TECHNIC  
Cesary Systems

**GOVERNUL ROMANIEI**  
ROMANIA'S GOVERNMENT  
PROIECT FINANAT DE UNIUNEA EUROPEANA  
SPRE PLANUL NATIONAL DE TRANSPORT FEROVIAR

**PROIECT FINANAT DE UNIUNEA EUROPEANA**  
SPRE PLANUL NATIONAL DE TRANSPORT FEROVIAR

**CONSULTANT / CONSULTANT**

Approved	Author	Date	Signature
Project manager	R. Lizza		
Approved	Section I Coordinator	C. Gernibelli	
Checked	Total Expert	C. Gernibelli	
Approved	Producer	P. Amadio	
Discussed	Designer		
Approved	Subcontractor responsible		

**SUBCONSULTANT / SUBCONSULTANT**

Realizarea trasei de cale ferata Biștea - Săpăla, parte componentă a coridorului IV Pan European, pe Secțiunea I Biștea - Săpăla

Rehabilitation of the railway line Biștea - Săpăla, component part of the IV Pan-European Corridor, for the trasse section with maximum speed of 160 km/h.

Secțiunea I Biștea - Săpăla

Denumire desen / Drawing Title : **TUNELUL UNELI ORMEIS**

Proiect/proiectat  
2022/07/25/2022  
P.11.1, T.5.

Lipsește planul sistemului de securitate  
Security system installation as schedule, schedule included

Condiționare / Condition System  
Scara / Scale  
1:1000  
L07  
3/4

EA 5 1 0 1 C 1 0 L X T S 1 0 1 2 0 1 5 0