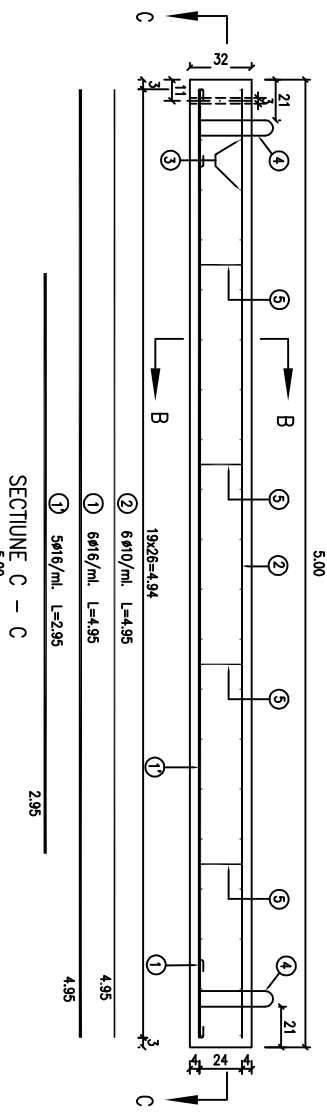
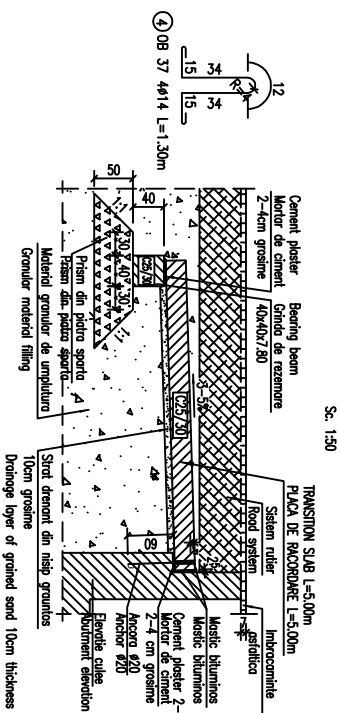


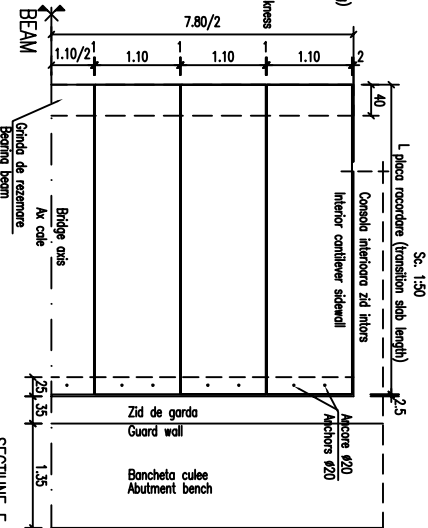
PLACA DE RACORDARE PREFABRICATA
 SECTIUNE A - A
 PRECAST TRANSITION SLABS
 SECTION A - A



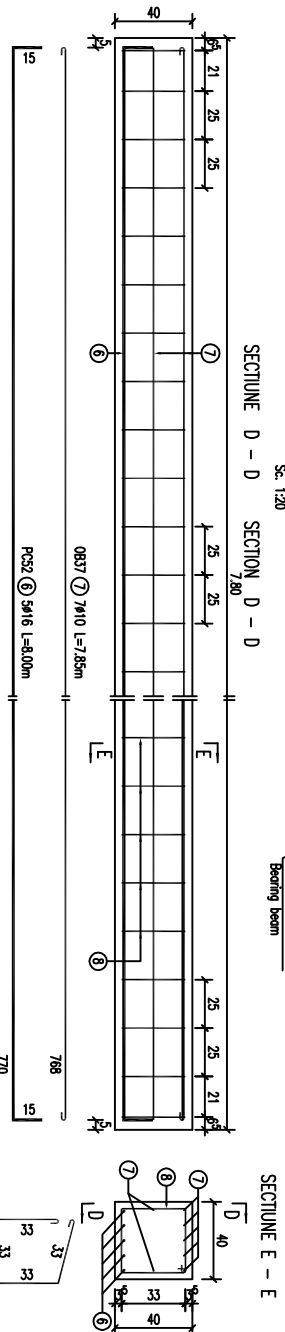
DETALIU ASEZARE PLACI DE RACORDARE
 Sc. 1:50



DETALIU DISPUNERE PLACI DE RACORDARE
 Sc. 1:30



GRINDA DE REZEMARE MONOLITA CAST IN PLACE BEARING BEAM
 Sc. 1:20



MASURATORAREA ARMATURII
 PENTRU O GRINDA DE REZEMARE
 (Reinforcement extract for a bearing beam)

M	φ	n	L	PCS2	ØB37	Ø10
1	16	5	8.00	40.00	Ø16	Ø10
2	10	7	7.85	54.95		
3	10	32	1.45	46.40		
Total lungimi pe diametru				40.00	101.35	
Masa pe metru				1.578	0.617	
Masa pe diametru				64.00	62.50	
TOTAL :				PC 52 64.00kgx2buc.=128kg		
				OB 37 62.50kgx2buc.=125kg		

Tolerante admise la dimensiunile de baza :

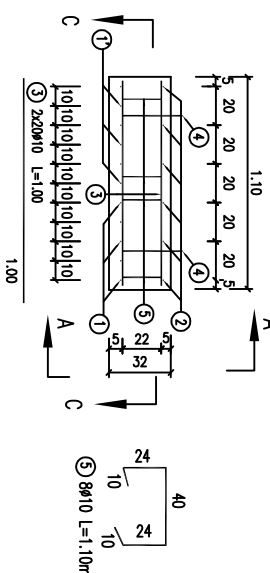
Lungime placă:	±30mm
Lățime placă:	±12.5mm
Groșime placă:	±6mm
Panșelă placă:	±10mm

Admitted tolerances to the given dimension :

Sub length:	±30mm
Sub width:	±12.5mm
Slab thickness:	±6mm
Panè slab:	±10mm

Casa beton:	C25/30	C25/30
Casa de armare:	XCl	XCl
Impermeabilitate:	P4	P4
Celuloză:	G100	G100
Ciment:	CEM II A-S 32.5R	CEM II A-S 32.5R
Dimensiune maximă agregat:	16mm	16mm
Viteza maximă A/C:	0.50	0.50
Casa de lezare:	S2	S2
Armătură:	ØB37, PCS2	ØB37, PCS2

SECTIUNE B - B
 SECTION B - B



MASURATORAREA ARMATURII
 PENTRU O PLACA L=5.00m
 (Reinforcement extract for a slab L=5.00m)

M	φ	n	L	PCS2	ØB37	Ø14
1	16	5	2.95	14.75	Ø16	Ø14
2	10	6	4.95	29.70		
3	10	40	1.00	40.00		
4	14	4	1.30	8.80		
5	10	8	1.10	8.80		
Total lungimi pe diametru				1.579	0.617	1.208
Masa pe metru				70.20	48.50	6.30
Masa pe diametru				70.20	48.50	6.30
TOTAL :				PC 52 70.20kgx14buc.=985kg		
				OB 37 54.80kgx14buc.=767.2kg		

Technical drawing footer containing project information, client details, and company logos. It includes the name 'C.M.C.F. - C.F.R. - S.A.', 'TECNIC LE OBERHEIMER', and 'CONSILIUl SAlNl / CONSULTANT'. It also features a QR code and a small map of Romania.