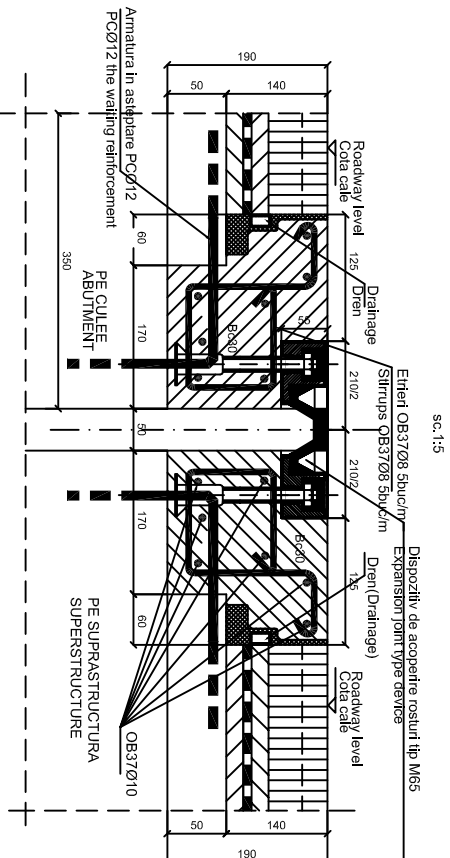
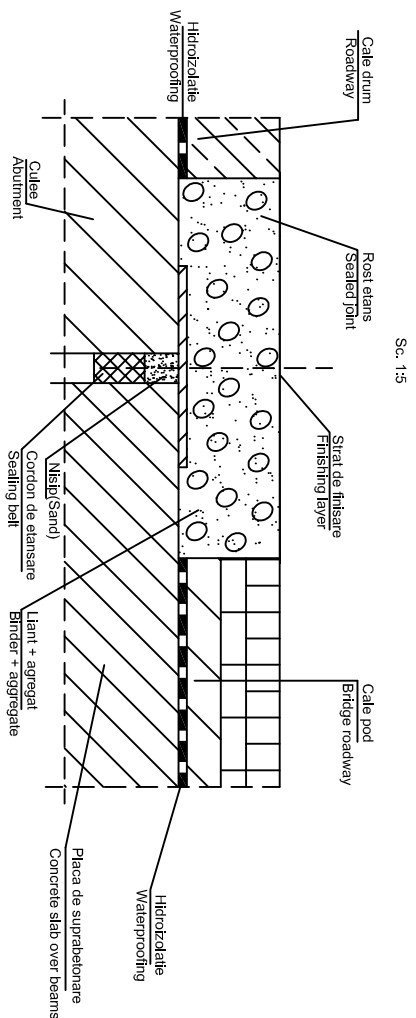


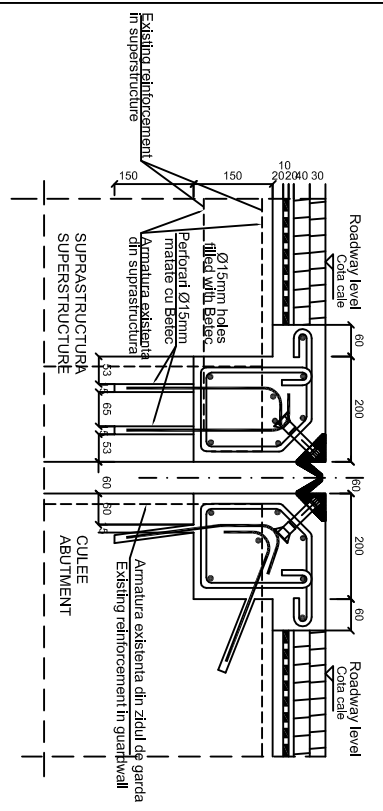
ROST TIP M65
 SECTIUNE TRANSVERSALA
 EXPANSION JOINT TYPE M65
 CROSS SECTION



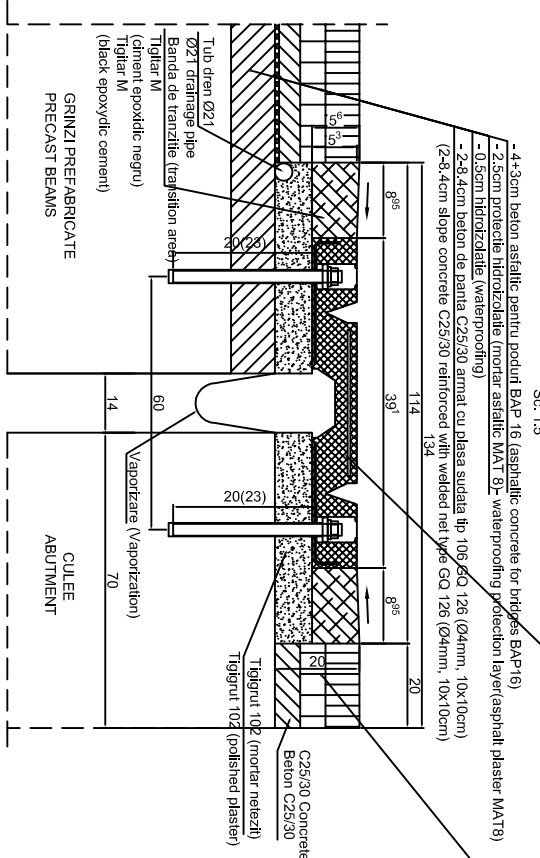
DETALIU ROST
 EXPANSION JOINT DETAIL



SECTIUNE TRANSVERSALA TIP NSO
 TYPE NSO CROSS SECTION



ROST DE DILATATIE LA CULEE (ABUTMENT EXPANSION JOINT)
 SECTIUNE LONGITUDINALA (LONGITUDINAL SECTION)



NOTA:

- Dimensiunile rostului sunt in mm
 - Dispozitivul trebuie sa asigure o deplasare maxima de + 10 mm
 - In cazul in care betonul din zidul de garda este degradat, se va anunta protectantul
- NOTE:
- The joint dimensions are given in mm
 - The device should assure a maximum displacement of + 10 mm
 - In case that the concrete in the guardwall is damaged the designer should be contacted.

This drawing is forbidden to be copied, lent or used in other purposes than those previously approved by AREX Lider Company as its owner. Se interzice copierea, difuzarea, imprumutarea sau utilizarea in alte scopuri, fara permisiunea AREX Lider Company ca proprietar al desenului.

D					
C					
B					
A	11.2011	Reviz. 1	Ionela Ungureanu	Proiectant	Approved CFR
Index		Modificari		Designer	Approved CFR
Date		Modificari/revizii		Approved Consultant	Approved CFR
GUVERNUL ROMANIEI ROMANIAN GOVERNMENT			PROIECT FINANAT DE UNIUNEA EUROPEANA EUROPEAN UNION FINANCED PROJECT		

CLIENT / CLIENT

C.N.C.F. "C.F.R." - S.A.

Approved	Project manager	R. Lizza	Date	Signature
Approved	Coordinator Sec Line 1	C. Gambelli		
Approved	Section 1 Coordinator			
Verified	Expert Check	V. Kalifronitis		
Checked	Checking Expert			

Approved	Responsabil Subcontractant	A. Dinulescu Stancu	11.2011	
Approved	Subcontractant Responsible	Ionela Ungureanu	11.2011	
Elaborat	Proiectant			

Reabilitarea liniei de cale ferata Brasov - Simeria, parte componenta a coridorului IV Pan European, pentru circula la trenurilor cu viteza maxima de 160 km/h, **Tronsoan 1 : Brasov - Sighisoara** (partea de la IV Pan-European Coridor, for the trains circulation with maximum speed of 160 km/h, **Section : Brasov - Sighisoara**)

Project/Project
Faza / Phase:
P.Th. / T.D.

Denumire desen / Drawing Title :
 INTERVAL APATA - RACOS
 PASAJ SUPERIOR / OVER PASS - KM 208+405.181 L=105.20m
 DETALII ROSTURI DE DILATATIE / DETAIL EXPANSION JOINT

Codificare / Codification System	Scara / Scale	LOT / LOT	Nr. / No
E A 5 1	0 1	E	1 0
		B Y	P A
		0 0	2
		1	0 1 6
			1