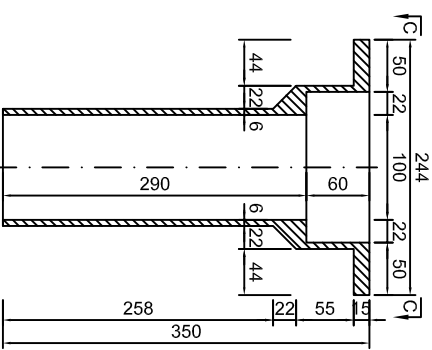


**P1 PALNIE DE EVACUARE P1 DISCHARGE PIPE**

Masa = 12 kg

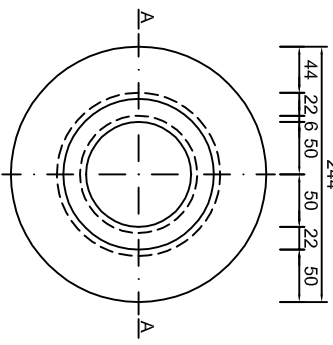
A - A

sc.1:5



C - C

sc.1:5

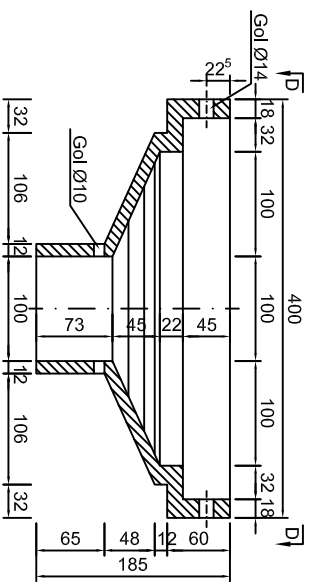


**P2 RAMA GRATARULUI P2 GRILLAGE FRAME**

Masa = 34 kg

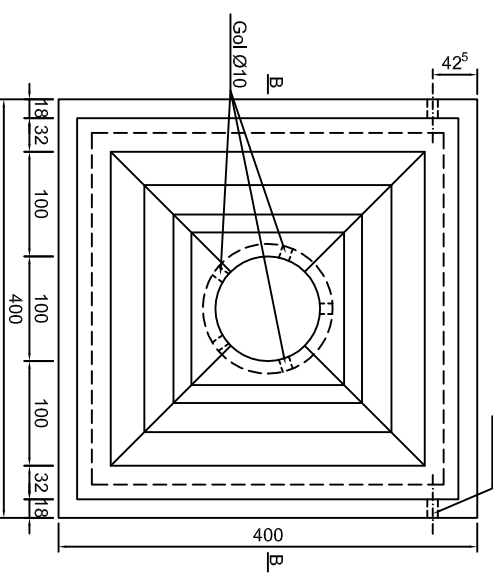
B - B

sc.1:5



D - D

sc.1:5

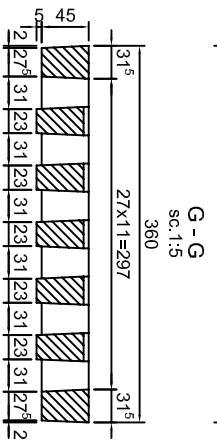
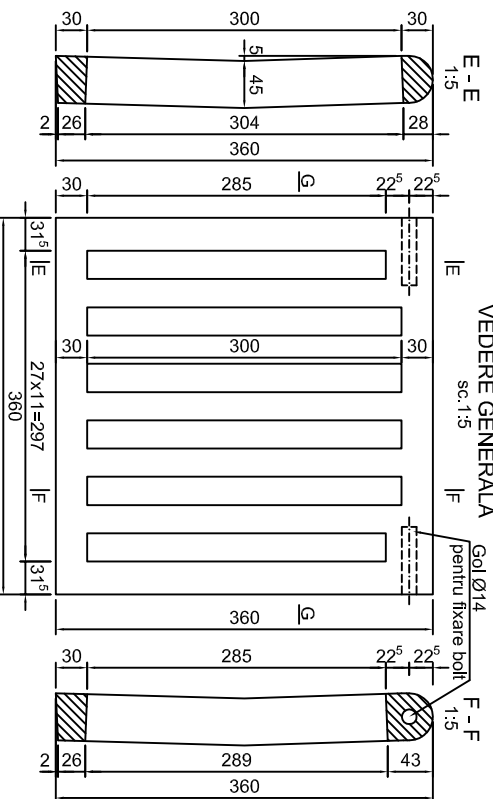


**P3 GRATAR P3 GRILLAGE**

Masa = 30 kg

VEDERE GENERALA

sc.1:5

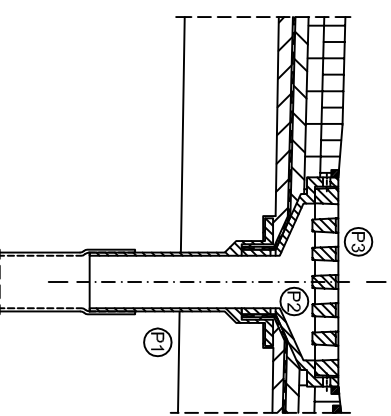
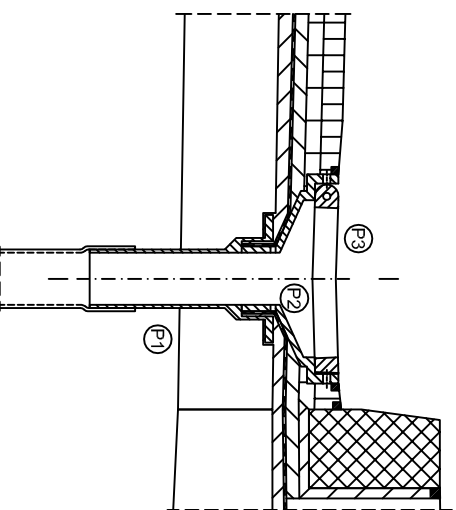


NOTA:

- La executia stranutii suport al hidroizolatiei, se va asigura o panta minima de 2% spre palnita de evacuare.
- Hidrozolatiea se va introduce in partea superioara a palniei si se va fixa prin montarea ramei gratarului asigurandu-se prin aceasta evacuarea apei infiltrate la nivelul hidroizolatiei, prin golumile lasate la partea inferioara a ramei gratarului.
- Inainte de turnarea asfaltului pe cale, se fixeaza gratarul de rama prin doua bolturii.
- La executie, se va avea grija ca nivelul superior al ramei gratarului sa nu depaseasca nivelul imbracamintii.

Note:

- At the execution of waterproofing support layer, a minimum slope of 2% will be assured towards the discharged pipe.
- The waterproofing will be introduced at the superior part of the pipe and will be fixed by mounting the grillage frame and by this assuring the evacuation of the infiltrated water, through the holes left on the inferior side of frame grillage
- Before pouring the asphalt on the road, the grillage will be fixed on the frame with 2 bolts.
- On execution, it's necessary to assure that the superior level of the grillage frame will not exceed the asphalt coating level.



This drawing is forbidden to be copied, lent or used in other purposes than those previously approved by AREX Lider Company as its owner. Se interzice copierea, difuzarea, imprintrarea sau utilizarea in alte scopuri, fara permisiunea AREX Lider Company ca proprietar al desenului.

D					
C					
B					
A					
Index	Data	Modificare	Proiectant	Approbat Consultant	Approbat CFR
Date		Modification/revision	Designer	Approved Consultant	Approved CFR
<p><b>GUVERNUL ROMANIEI</b> ROMANIAN GOVERNMENT</p> <p><b>PROIECT FINANATAT DE UNIUNEA EUROPEANA</b> EUROPEAN UNION FINANCED PROJECT</p>					

CLIENT / CLIENT



C.N.C.F. "C.F.R." - S.A.



CONSULTANT / CONSULTANT

Approbat	Set protect	R. Luzzza	Date	Semnatura
Approved	Project manager			
Approbat	Coordonator Sectiune 1	C. Gambelli		
Approved	Section 1 Coordinator			
Verificat	Expert Chefa	V.Kallidromitis		
Checked	Checking Expert			

SUBCONTRACTANT / SUBCONTRACTOR



Approbat	Responsabil Subcontractant	A. Dinulescu Stanciu	02.2012	
Approved	Subcontractant Responsible			
Elaborat	Proiectant	Ionela Ungureanu	02.2012	
Elaborated	Designer			

Reabilitarea liniei de cale ferata Brasov - Simeria, parte componentă a coridorului IV Pan European, pentru circulatia trenurilor cu viteza maximă de 160 km/h, Tronsoanel : Brasov - Sighisoara

Rehabilitation of the railway line Brasov - Simeria, component Part of the IV Pan-European Corridor, for the trains circulation with maximum speed of 160 km/h, Section : Brasov - Sighisoara

Denuntire desen / Drawing Title : STATIA / STATION FELDIOARA

PASA SUPERIOR / OVERPASS - KM 191+938.00

DETALIUL GURA DE SCURGERE / DETAILS SPOUT

Codificare / Codification System	Scara / Scale	LOT / LOT	Nr. / No
EA51 01 E 07 BY PA 00 4 1 014 1	1:0:1:5		01 / 01