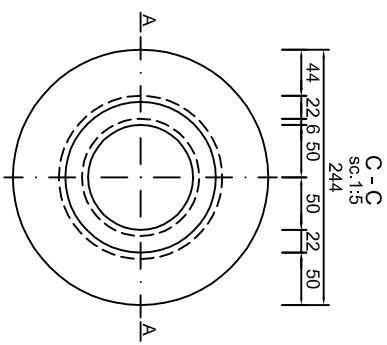
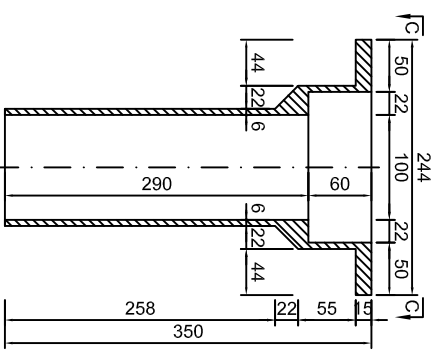


P1 PALNIE DE EVACUARE **E1** DISCHARGE PIPE

Masa = 12 kg

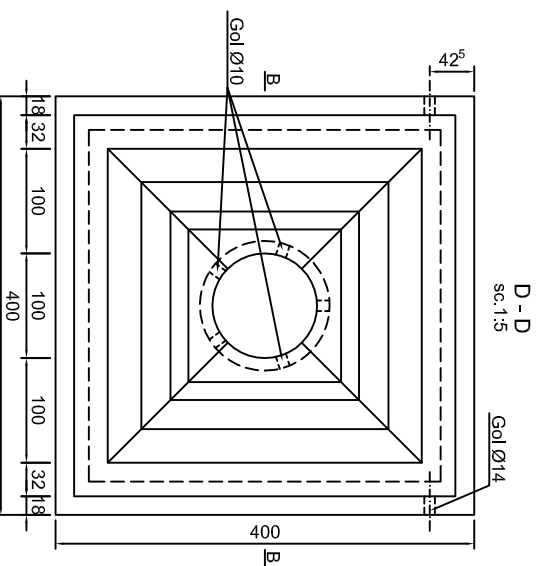
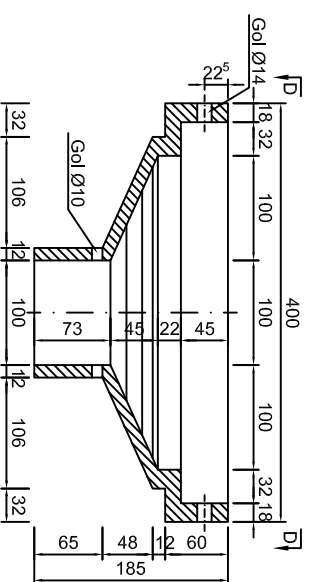
A - A
sc.1:5



P2 RAMA GRATARULUI **E2** GRILLAGE FRAME

Masa = 34 kg

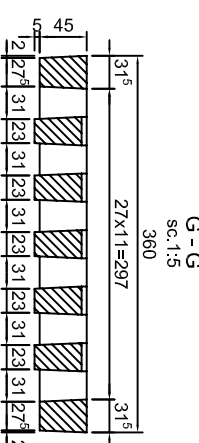
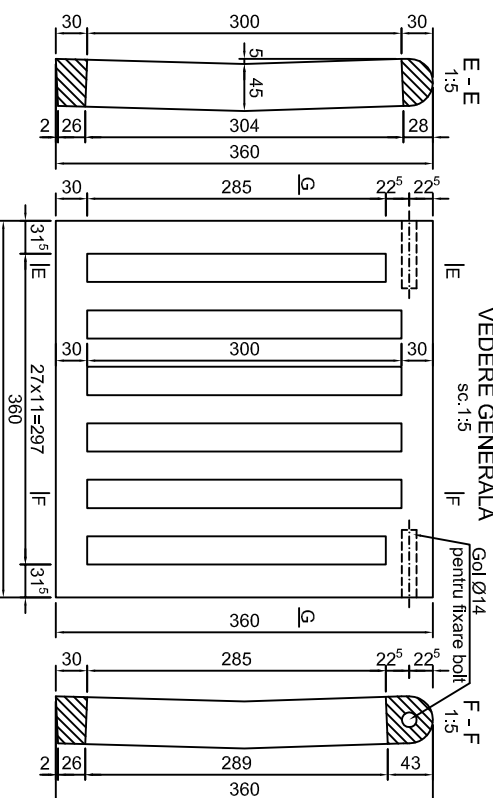
B - B
sc.1:5



P3 GRATAR **E3** GRILLAGE

Masa = 30 kg

VEDERE GENERALA
sc.1:5



NOTA:

- La executia stratului suport al hidroizolatiei, se va asigura o panta minima de 2% spre palnia de evacuare.
- Hidrozolatiea se va introduce in partea superioara a palniei si se va fixa prin montarea ramei gratarului asigurandu-se prin aceasta evacuarea apei infiltrate la nivelul hidroizolatiei, prin golurile lasate la partea inferioara a ramei gratarului.
- Inainte de turnarea asfaltului pe cale, se fixeaza gratarul de rama prin doua boluri.
- La executie, se va avea grija ca nivelul superior al ramei gratarului sa nu depaseasca nivelul imbracamintii.

Note:

- At the execution of waterproofing support layer, a minimum slope of 2% will be assured towards the discharged pipe.
- The waterproofing will be introduced at the superior part of the pipe and will be fixed by mounting the grille frame and by this assuring the evacuation of the infiltrated water, through the holes left on the inferior side of frame grille.
- Before pouring the asphalt on the road, the grilleage will be fixed on the frame with 2 bolts.
- On execution, it's necessary to assure that the superior level of the grilleage frame will not exceed the asphalt coating level.

This drawing is forbidden to be copied, lent or used in other purposes than those previously approved by AREX *Leader* Company as its owner. Se interzice copierea, difuzarea, imprunularea sau utilizarea in alte scopuri, fara permisiunea AREX *Leader* Company ca proprietar al desenului.

D					
C					
B					
A					
Index	Date	Modificare	Proiectant	Approbat Consultant	Approbat CFR
		Modification/revision	Designer	Approved Consultant	Approved CFR
<p>GUVERNUL ROMANIEI ROMANIAN GOVERNMENT</p> <p>PROIECT FINANATAT DE UNIUNEA EUROPEANA EUROPEAN UNION FINANCED PROJECT</p>					

CLIENT / CLIENT



C.N.C.F. "C.F.R." - S.A.



CONSULTANT / CONSULTANT		Date	Semnatura
Approbat	Set protect		R. Luzza
Approbat	Project manager		
Approbat	Coordinator Section 1		C. Gambelli
Verificat	Section 1 Coordinator		
Verificat	Expert Chief		
Checked	Checking Expert		V.Kallidromitis

SUBCONTRACTANT / SUBCONTRACTOR



Approbat	Responsabil Subcontractant	A. Dinulescu Stanciu	11.2011	
Approbat	Subcontractant Responsible			
Elaborat	Designer	Ionela Ungureanu	11.2011	
<p>Reabilitarea liniei de cale ferata Brasov - Simeria, parte component a a coridorului IV Pan European, pentru circulatia trenurilor cu viteza maxim a de 160 km/h.</p> <p>Tronsonul : Brasov - Sighisoara</p> <p>2004/RO/16/P/PA/003</p>				
<p>Rehabilitation of the railway line Brasov - Simeria, component Part of the IV Pan-European Corridor, for the trains circulation with maximum speed of 160 km/h.</p> <p>Section : Brasov - Sighisoara</p> <p>Faza / Phase: P.Th. / T.D.</p>				

Denumire desen / Drawing Title :

INTERVAL RACOS - CATA
PASAU SUPERIOR / OVER PASS - KM 225+068.122 L=116.20m
DETALII GURA DE SCURGERE / DETAILS SPOUT

Codificare / Codification System		Serie / Scale	LOT / LOT	Nr. / No
EA51 01 E 12 BY PA 00 3 1 013 1		1:0:15		01 / 01