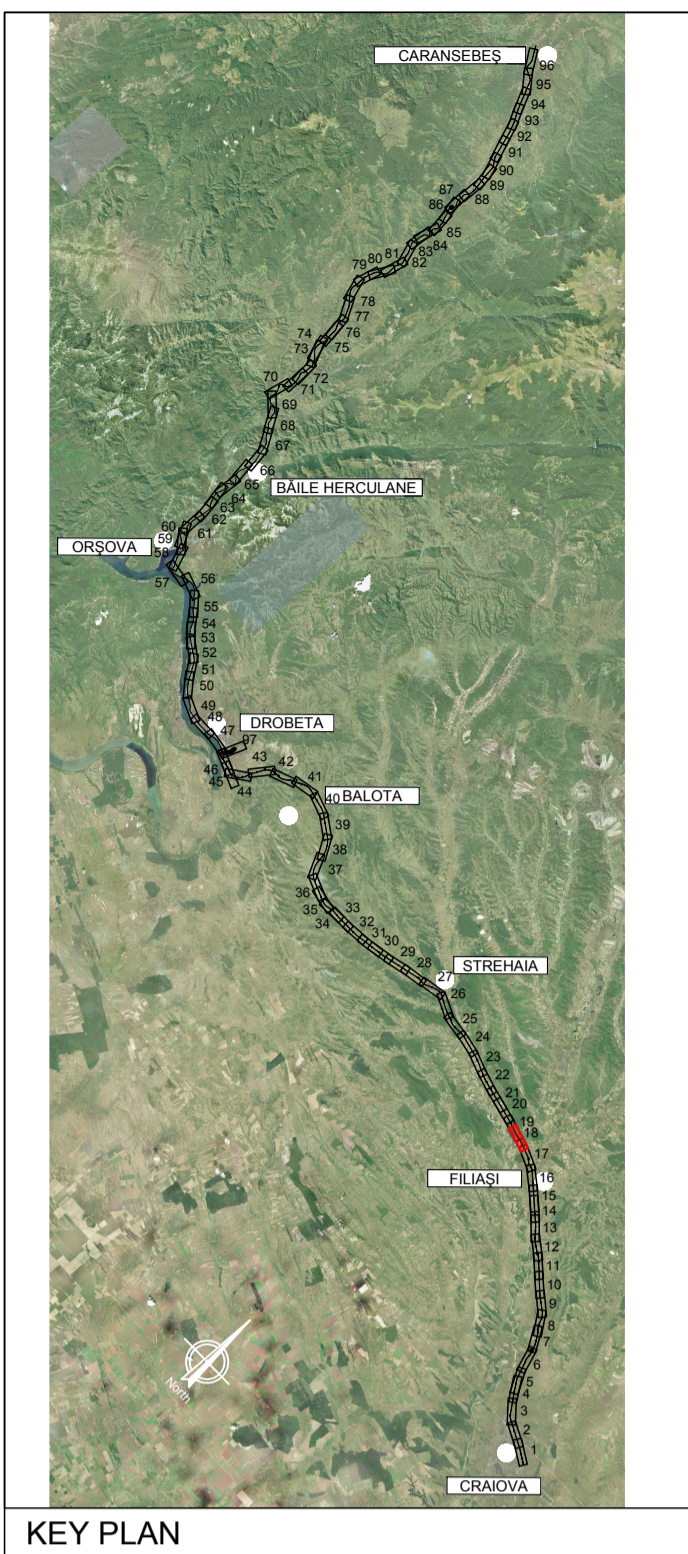
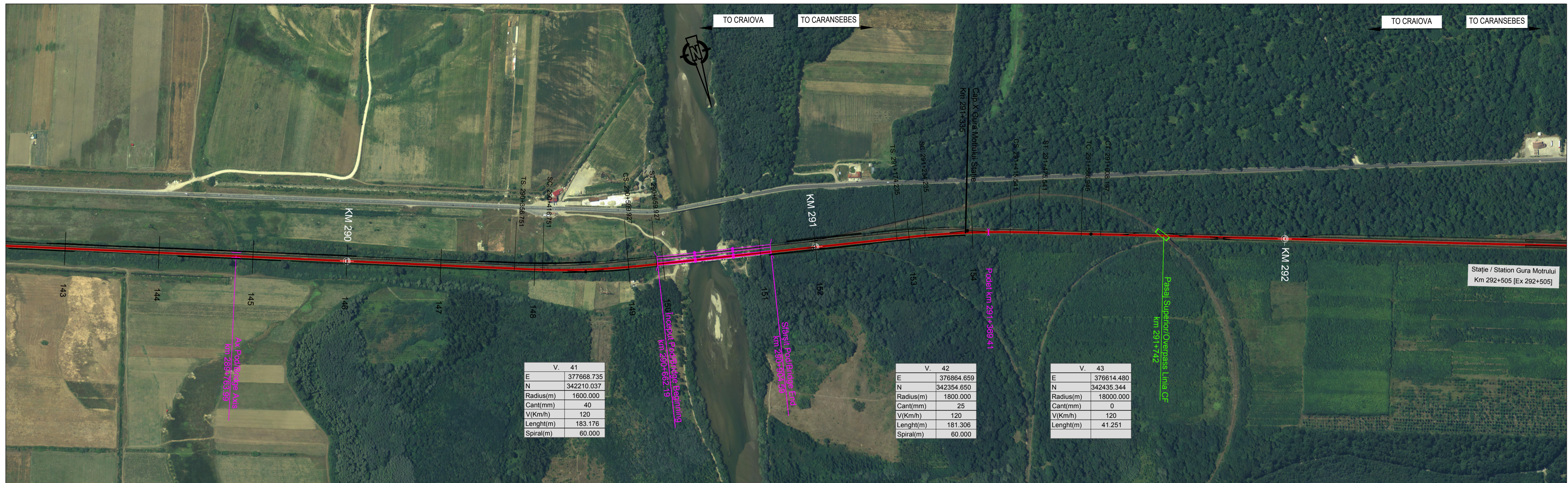
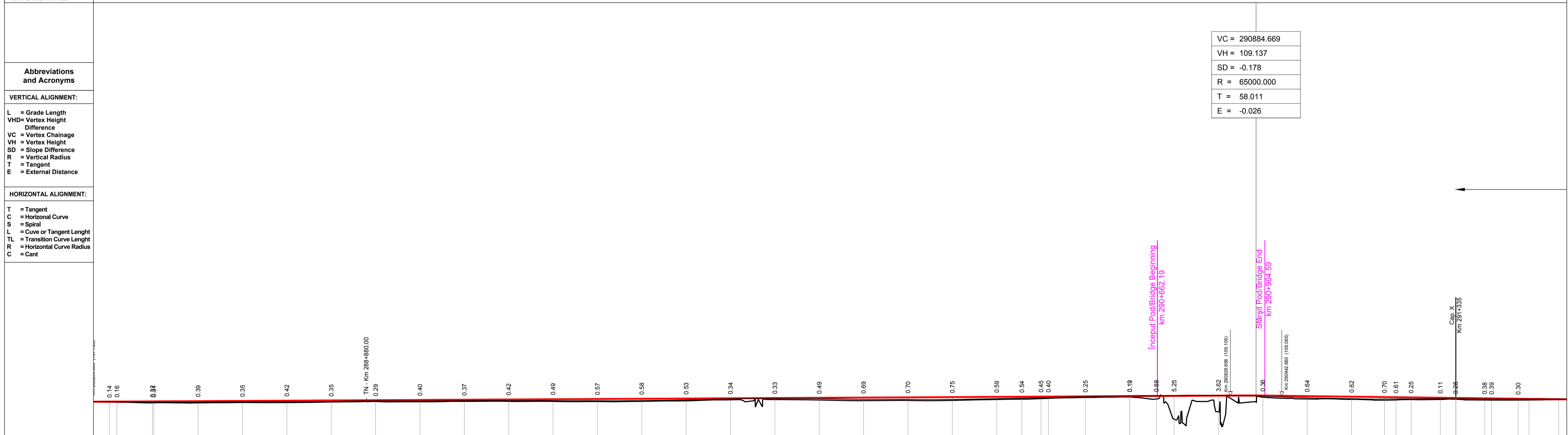


NOTE:
 1. Pozitiile kilometrice prezantate (km) se refera la pozitiile proiectate pe frul I. / The reported kilometeric positions (km) refer to designed positions on track I.
 2. In profilul longitudinal, podelele si lucrările de consolidare nu sunt reprezentate. / In the longitudinal profile, culverts and consolidation works are not represented.
 3. Pentru tronsoanele in care traseul orizontal este neschimbat in comparatie cu cel existent, cotele terenului corespund cu cotele substratului caili. / For the sections where the horizontal alignment is unchanged compared to the existing, the ground levels correspond with the existing sub-ballast level.



PROFIL LONGITUDINAL / VERTICAL ALIGNMENT	L =	2745.506	808.522
Grade =	VHD =	1.476	-1.008
	Grade =	0.054	-0.125



N. SECTIUNE / SECTION NUMBER	138	139	140	141	142	143	144	145	146	147	148	149	150	151	152	153	154
NIVEL SUPERIOR SINA (NSS) / TOP OF RAIL (TOR)	107.61	107.75	107.86	107.91	107.91	107.91	107.91	107.91	107.91	107.91	107.91	107.91	107.91	107.91	107.91	107.91	107.91
COTA TEREN (CT) / GROUND LEVEL (GL)	107.61	107.75	107.86	107.91	107.91	107.91	107.91	107.91	107.91	107.91	107.91	107.91	107.91	107.91	107.91	107.91	107.91
NSS EXISTENTA / EXISTING TOR	107.60	107.74	107.85	107.90	107.90	107.90	107.90	107.90	107.90	107.90	107.90	107.90	107.90	107.90	107.90	107.90	107.90
KILOMETRAJ / KILOMETERS	288300.00	288400.00	288500.00	288600.00	288700.00	288800.00	288900.00	289000.00	289100.00	289200.00	289300.00	289400.00	289500.00	289600.00	289700.00	289800.00	289900.00

LEGENDĂ / LEGEND

- Traseu C.F. Linie Dubla Railway Alignment Double Line
- Traseu C.F. Linie Simpla Railway Alignment Single Line
- Viaduct
- Pod Underpass
- Pasaj superior Overpass
- Podet Culvert
- Podet existent Existing Culvert
- Pod existent Existing Bridge
- Tunel Tunnel
- Area de siguranta si strada de acces Safety area and access path
- Lucrări de consolidari Consolidation Works
- Drumuri Deviate Diverted Roads
- Treceri La Nivel Level crossing

Scara / Scale 1: 5.000

SISTEM DE COORDONATE DE REFERINȚĂ
 Punct de Origină Pentru Sistem de Coordonate: S-42
 Unitatea de Măsură România: metri
 Proiecție: Stereio 70

COORDINATE REFERENCE SYSTEM
 Datum: S-42 Romania Units: meters
 Projection: Stereo 70

REV.	DATA/DATE	DESCRIERE MODIFICARE / MODIFICATION DESCRIPTION
A	Mai 2020	Prima ediție SFF / FFS First submission
B	Sept 2020	Conform solicitărilor Beneficiarului din act nr.11/2/504/2020
C		
D		

FAZA PHASE	NUME NAME	SEMNATURA SIGNATURE
APROBAT APPROVED	S. Menichini	<i>S. Menichini</i>
VERIFICAT CHECKED	S. Menichini	<i>S. Menichini</i>
INTOCMIT ELABORATED	F. Sorge	<i>F. Sorge</i>

SCARA SCALE 1:5000 / 1:500

FOAIE SHEET 18 din 97 / 18 of 97

DATA DATE Mai 2020

Cofinanta de Mecanismul pentru interconectarea Europei al Uniunii Europene

CLIENT CLIENT C.N.C.F. "C.F.R." - S.A.

STUDIU DE FEZABILITATE PENTRU REABILITARE A LINIEI FERROVIARE CRAIOVA - CARANSEBES / FEASIBILITY STUDY FOR THE REHABILITATION OF THE RAILWAY LINE CRAIOVA - CARANSEBES

CONSULTANT CONSULTANT **ITALFERR**

ISP CF Fondat in 1947

ITALROM INGINERIE INTERNACIONALA S.R.L.

DENUMIRE / TITLE: Interval Filași St. - Gura Motrului Hm. - km 286+735 - km 291+335 - 2 din 2

CODIFICARE / CODIFICATION SYSTEM: E218 | I | SF | 12 | K5 | AL | 0 | 05 | 018 | B