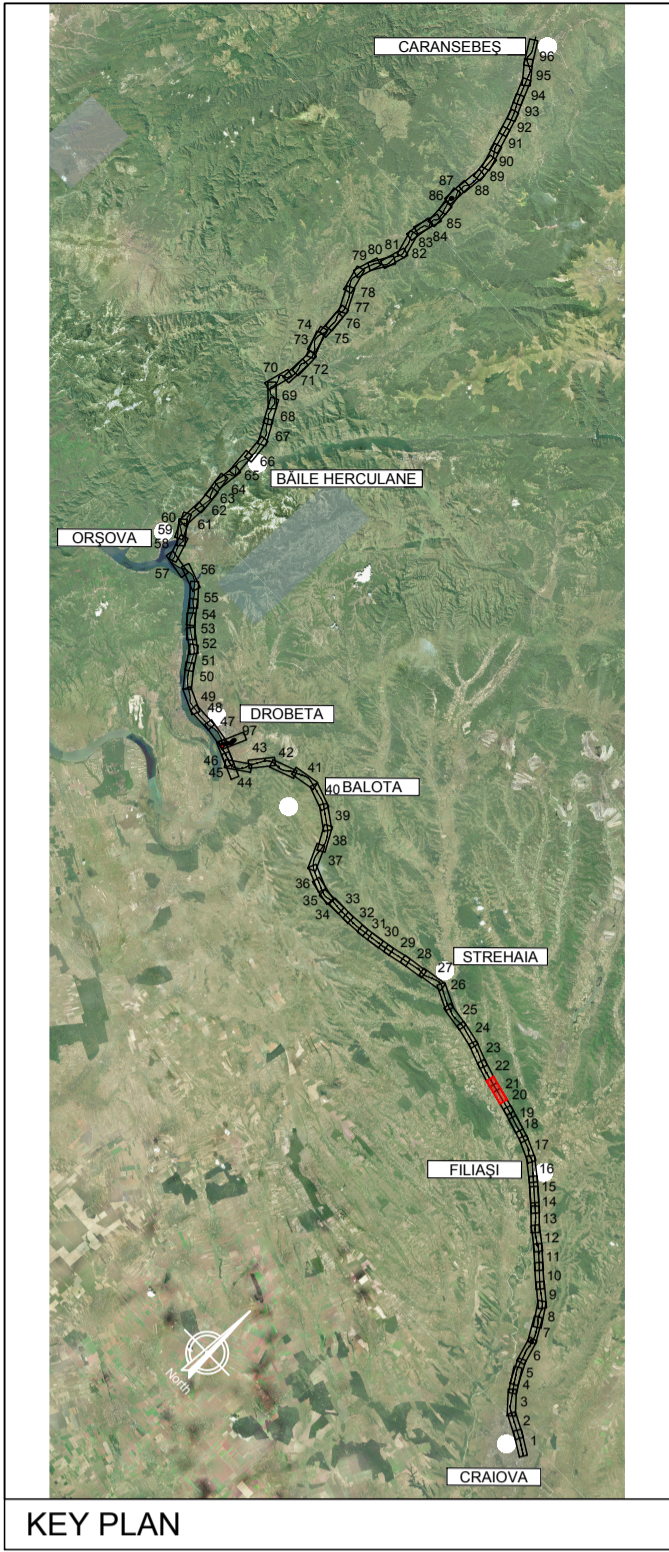
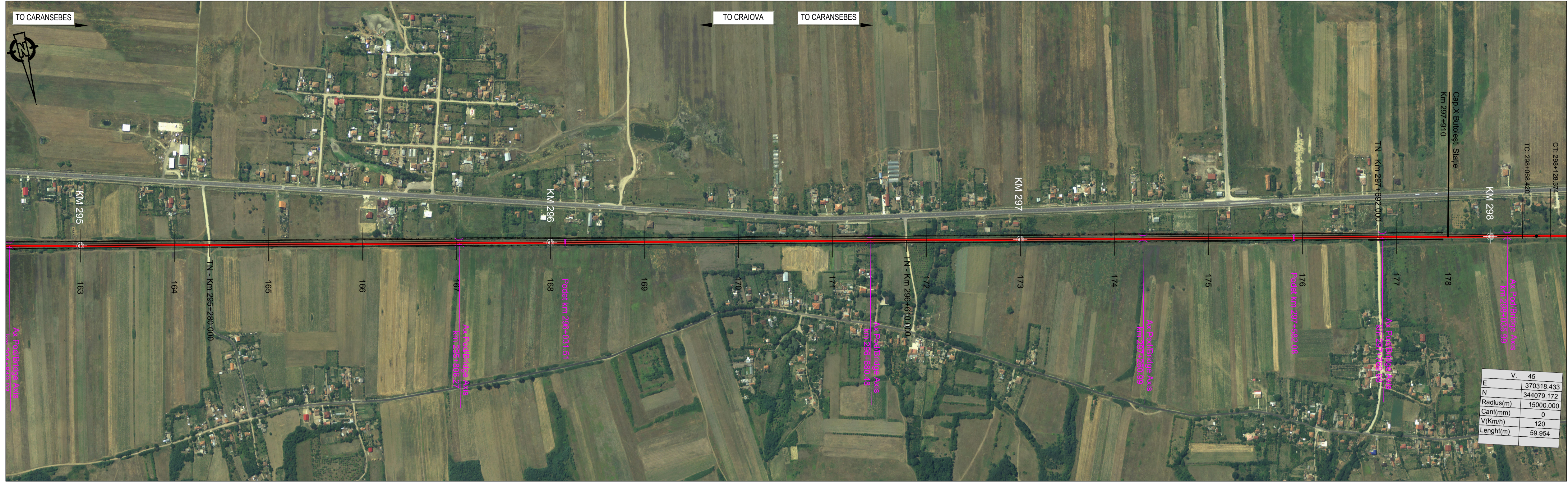


NOTE:
 1. Pozitiile kilometrice prezentate (km) se refera la pozitiile proiectate pe frul I. / The reported kilometeric positions (km) refer to designed positions on track I.
 2. In profilul longitudinal, podețele și lucrările de consolidare nu sunt reprezentate. / In the longitudinal profile, culverts and consolidation works are not represented.
 3. Pentru tronsoanele în care traseul orizontal este neschimbat în comparație cu cel existent, cotele terenului corespund cu cotele substratului căii. / For the sections where the horizontal alignment is unchanged compared to the existing, the ground levels correspond with the existing sub-ballast level.



KEY PLAN

PROFIL LONGITUDINAL / VERTICAL ALIGNMENT	L =	482.222	513.820	414.013	463.517	602.418	524.923									
VHD =		2.231	1.759	-0.704	2.083	-0.332	0.415									
Grade =		0.463	0.342	-0.170	0.449	-0.055	0.079									
PROFIL KILOMETRICE / VERTICAL CHAINAGE		1.684	295323.906	295837.726	296251.739	296715.255	297317.673	297842.597								
VC =	294841.684	295323.906	295837.726	296251.739	296715.255	297317.673	297842.597									
VH =	112.181	114.412	116.170	115.467	117.550	117.218	117.633									
SD =	0.304	-0.120	-0.512	0.619	-0.505	0.134	-0.051									
R =	-50000.000	52000.000	38000.000	-32000.000	39000.000	-56000.000	62000.000									
T =	75.971	31.270	97.328	99.113	98.412	98.412	15.693									
E =	0.058	-0.009	-0.125	0.153	-0.124	0.013	-0.002									
Abbreviations and Acronyms	<p>L = Grade Length VHD = Vertex Height Difference VC = Vertex Chainage VH = Vertex Height SD = Slope Difference R = Vertical Radius T = Tangent E = External Distance</p>															
VERTICAL ALIGNMENT:	<p>L = Grade Length VHD = Vertex Height Difference VC = Vertex Chainage VH = Vertex Height SD = Slope Difference R = Vertical Radius T = Tangent E = External Distance</p>															
HORIZONTAL ALIGNMENT:	<p>T = Tangent C = Horizontal Curve S = Spiral L = Curve or Tangent Length TL = Transition Curve Length R = Horizontal Curve Radius C = Cant</p>															
SCARA / SCALE	<p>X= 5000 Y= 500</p>															
Plan de Referință	100.00 m															
N. SECTIUNE / SECTION NUMBER	163	164	165	166	167	168	169	170	171	172	173	174	175	176	177	178
NIVEL SUPERIOR SINA (NSS) / TOP OF RAIL (TOR)	112.45	112.91	113.38	113.84	114.30	114.76	115.22	115.68	116.14	116.60	117.06	117.52	117.98	118.44	118.90	119.36
COTA TEREN (CT) / GROUND LEVEL (GL)	111.62	112.11	112.65	113.23	113.81	114.40	114.98	115.56	116.14	116.72	117.30	117.88	118.46	119.04	119.62	120.20
NSS EXISTENTA / EXISTING TOR	111.62	112.21	112.81	113.39	113.97	114.55	115.13	115.71	116.29	116.87	117.45	118.03	118.61	119.19	119.77	200.35
KILOMETRAJ / KILOMETERS	294900.00	295000.00	295100.00	295200.00	295300.00	295400.00	295500.00	295600.00	295700.00	295800.00	295900.00	296000.00	296100.00	296200.00	296300.00	296400.00
POZITII KILOMETRICE / CHAINAGE	295					296					297					298
TRASEU IN PLAN / HORIZONTAL ALIGNMENT	L= 4458.13															

LEGENDĂ / LEGEND

- Traseu C.F. Linie Dubla Railway Alignment Double Line
- Traseu C.F. Linie Simpla Railway Alignment Single Line
- Viaduct
- Pod Underpass
- Pasaj superior Overpass
- Podet Culvert
- Podet existent Existing Culvert
- Pod existent Existing Bridge
- Tunel Tunnel
- Area de siguranta si strada de acces Safety area and access path
- Lucrări de consolidari Consolidation Works
- Drumuri Deviate Diverted Roads
- Treceri La Nivel Level crossing

Scara / Scale 1: 5.000

0 100m 200m 300m

SISTEM DE COORDONATE DE REFERINȚĂ
 Punct de Origine Pentru Sistem de Coordonate: S-42
 Unitatea de Măsură România: metri
 Proiecție: Stere0 70

COORDINATE REFERENCE SYSTEM
 Datum: S-42 Romania Units: meters
 Projection: Stereo 70

REV.	DATA/DATE	DESCRIERE MODIFICARE / MODIFICATION DESCRIPTION
A	Mai 2020	Prima ediție SFF / FFS First submission
B	Sept 2020	Conform solicitărilor Beneficiarului din act nr.112/504/2020
C		
D		

FAZA PHASE	NUME NAME	SEMNATURA SIGNATURE
APROBAT APPROVED	S. Menichini	<i>S. Menichini</i>
VERIFICAT CHECKED	S. Menichini	<i>S. Menichini</i>
INTOCMIT ELABORATED	F. Sorge	<i>F. Sorge</i>
SCARA SCALE	1:5000 / 1:500	FOAIE SHEET 21 din 97 / 21 of 97

Cofinanta de Mecanismul pentru interconectarea Europei al Uniunii Europene

CLIENT CLIENT

C.N.C.F. "C.F.R." - S.A.

CONSULTANT CONSULTANT

STUDIU DE FEZABILITATE PENTRU REABILITARE A LINIEI FERROVIARE CRAIOVA - CARANSEBES / FEASIBILITY STUDY FOR THE REHABILITATION OF THE RAILWAY LINE CRAIOVA - CARANSEBES

CONSULTANT CONSULTANT

DENUMIRE / TITLE:

Interval Gura Motrului Hm. - Butoiști Hm. - km 293+435 - km 297+910 - 2 din 2
 Interval Gura Motrului Hm. - Butoiști Hm. - km 293+435 - km 297+910 - 2 of 2

CODIFICARE / CODIFICATION SYSTEM:

NUMAR PROIECT	FAZA DE PROIECTARE	STADIU / STAGE	TIP DOCUMENT	SPECIALITATE	NUMAR OBIECT	NUMEROTARE PROIECTIVA	REVIZIE
E218	I	SF	14	K5	AL	0	05
						021	B