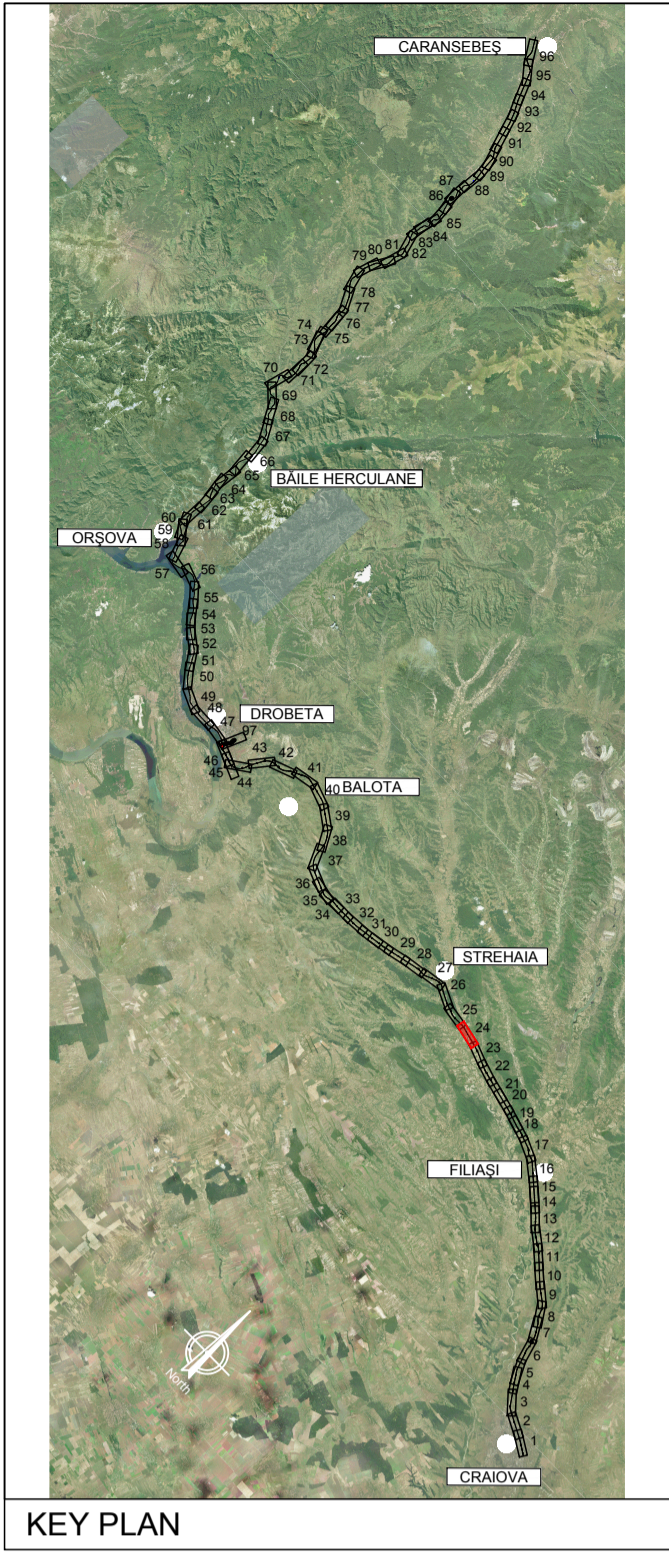
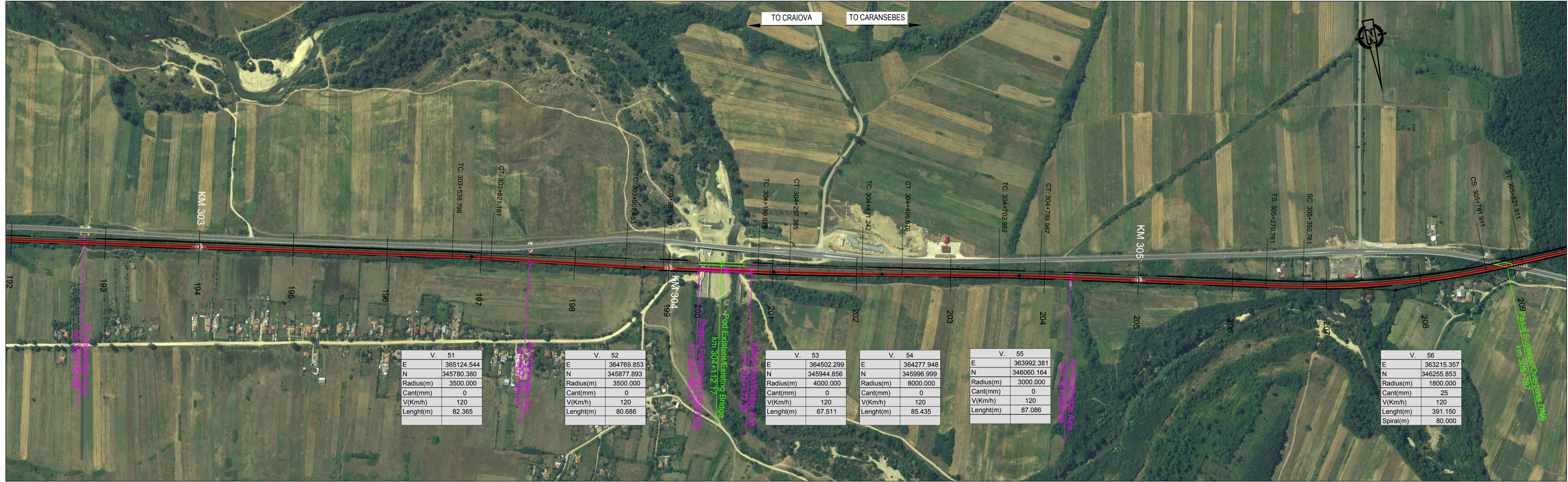
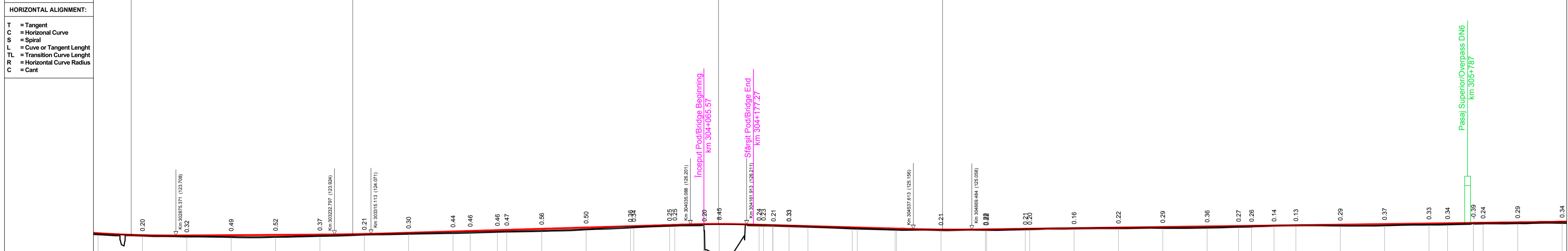


NOTE:  
 1. Pozitiile kilometrice prezantate (km) se refera la pozitiile proiectate pe frul l. / The reported kilometric positions (km) refer to designed positions on track l.  
 2. In profilul longitudinal, podelele si lucrările de consolidare nu sunt reprezentate. / In the longitudinal profile, culverts and consolidation works are not represented.  
 3. Pentru tronsoanele in care traseul orizontal este neschimbat in comparatie cu cel existent, cotele terenului corespund cu cotele substratului caili. / For the sections where the horizontal alignment is unchanged compared to the existing, the ground levels correspond with the existing sub-ballast level.



PROFIL LONGITUDINAL / VERTICAL ALIGNMENT	L =	499.387	824.546	505.048	1846.090
Grade =	VHD =	0.303	2.439	-1.417	2.427
PROFIL KILOMETRICE / VERTICAL CHAINAGE		302774.568	303273.955	304098.501	304603.549

Abbreviations and Acronyms	VC = 302774.568	VC = 303273.955	VC = 304098.501	VC = 304603.549
	VH = 123.647	VH = 123.949	VH = 126.389	VH = 124.971
	SD = 0.806	SD = 0.235	SD = -0.576	SD = 0.412
	R = -25000.000	R = -35000.000	R = 22000.000	R = -32000.000
	T = 100.803	T = 41.158	T = 63.413	T = 65.936
VERTICAL ALIGNMENT:	E = 0.203	E = 0.024	E = -0.091	E = 0.068



SCARA / SCALE X= 5000 SCARA / SCALE Y= 500																				
Plan de Referinta / SECTION NUMBER	193	194	195	196	197	198	199	200	201	202	203	204	205	206	207	208	209	210		
NIVEL SUPERIOR SINA (NSS) / TOP OF RAIL (TOR)	124.22	123.76	123.72	123.76	123.84	124.02	124.32	124.62	124.73	124.79	124.83	124.83	125.04	125.04	125.04	125.04	125.04	125.04	125.04	
COTA TEREN (CT) / GROUND LEVEL (GL)	124.14	123.89	123.46	123.40	123.72	124.27	124.73	124.45	124.01	124.68	124.05	124.45	124.01	124.68	124.05	124.45	124.01	124.68	124.05	
NSS EXISTENTA / EXISTING TOR	124.14	123.89	123.46	123.40	123.72	124.27	124.73	124.45	124.01	124.68	124.05	124.45	124.01	124.68	124.05	124.45	124.01	124.68	124.05	
KILOMETRAJ / KILOMETERS	302700.00	302800.00	302900.00	303000.00	303100.00	303200.00	303300.00	303400.00	303500.00	303600.00	303700.00	303800.00	303900.00	304000.00	304100.00	304200.00	304300.00	304400.00	304500.00	
POZITII KILOMETRICE / CHAINAGE	L=1377.73	303		L=296.52			304	L=201.71	R=4000.00 L=87.51	L=153.86	R=8000.00 L=85.43	L=206.21		305	L=480.79				306	
TRASEU IN PLAN / HORIZONTAL ALIGNMENT																				

**LEGENDĂ / LEGEND**

- Traseu C.F. Linie Dubla Railway Alignment Double Line
- Traseu C.F. Linie Simpla Railway Alignment Single Line
- Viaduct
- Pod Underpass
- Pasaj superior Overpass
- Podet Culvert
- Podet existent Existing Culvert
- Pod existent Existing Bridge
- Tunel Tunnel
- Area de siguranta si strada de acces Safety area and access path
- Lucrări de consolidari Consolidation Works
- Drumuri Deviate Diverted Roads
- Treceri La Nivel Level crossing

Scara / Scale 1: 5.000

SISTEM DE COORDONATE DE REFERINTĂ  
 Punct de Origine Pentru Sistem de Coordonate: S-42  
 Unitatea de Măsură România: metri  
 Proiecție: Stereio 70

COORDINATE REFERENCE SYSTEM  
 Datum: S-42 Romania Units: meters  
 Projection: Stereo 70

REV.	DATA/DATE	DESCRIERE MODIFICARE / MODIFICATION DESCRIPTION
A	Mai 2020	Prima ediție SFF / FFS First submission
B	Sept 2020	Conform solicitărilor Beneficiarului din act nr.112/504/2020
C		
D		

FAZA PHASE	NUME NAME	SEMNTURA SIGNATURE
APROBAT APPROVED	S. Menichini	<i>S. Menichini</i>
VERIFICAT CHECKED	S. Menichini	<i>S. Menichini</i>
INTOCMIT ELABORATED	F. Sorge	<i>F. Sorge</i>
SCARA SCALE	1:5000 / 1:500	FOAIE SHEET 24 din 97 / 24 of 97

CLIENT CLIENT

**C.N.C.F. "C.F.R." - S.A.**

CONSULTANT CONSULTANT

**ITALFERR**  
GRUPPO FERROVIARIO DELLO STATO ITALIANO  
LIFE: Accidents

**ISP CF** Fondat in 1947

**ITALROM**  
INGINIERI INTERNAZIONALE S.R.L.

**STUDIUL DE FEZABILITATE PENTRU REABILITARE A LINIEI FERROVIARE CRAIOVA - CARANSEBES / FEASIBILITY STUDY FOR THE REHABILITATION OF THE RAILWAY LINE CRAIOVA - CARANSEBES**

DENUMIRE / TITLE:  
Interval Butoiești Hm. - Strehăia St. - km 300+100 - km 308+600 - 2 din 3  
Interval Butoiești Hm. - Strehăia St. - km 300+100 - km 308+600 - 2 of 3

CODIFICARE / CODIFICATION SYSTEM:

NUMAR PROIECT	FAZA DE PROIECTARE	STATA / INTERVAL	TIP DOCUMENT	SPECIALITATE	NUMAR OBIECT	NUMEROTARE PROGRESIVA	REVIZIE
E218	I	SF	16	K5	AL	0	05
						024	B

CLIENT CLIENT

**C.N.C.F. "C.F.R." - S.A.**

CONSULTANT CONSULTANT

**ITALFERR**  
GRUPPO FERROVIARIO DELLO STATO ITALIANO  
LIFE: Accidents

**ISP CF** Fondat in 1947

**ITALROM**  
INGINIERI INTERNAZIONALE S.R.L.