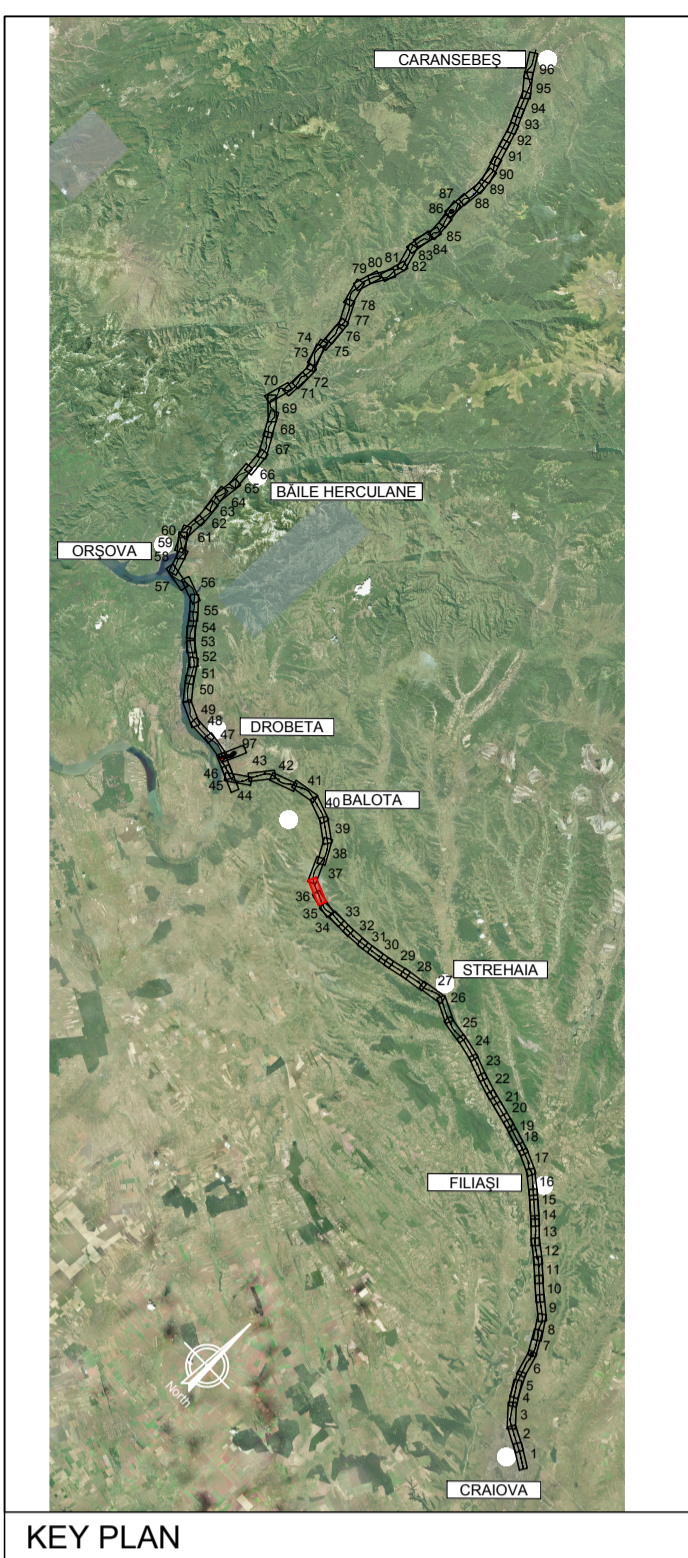
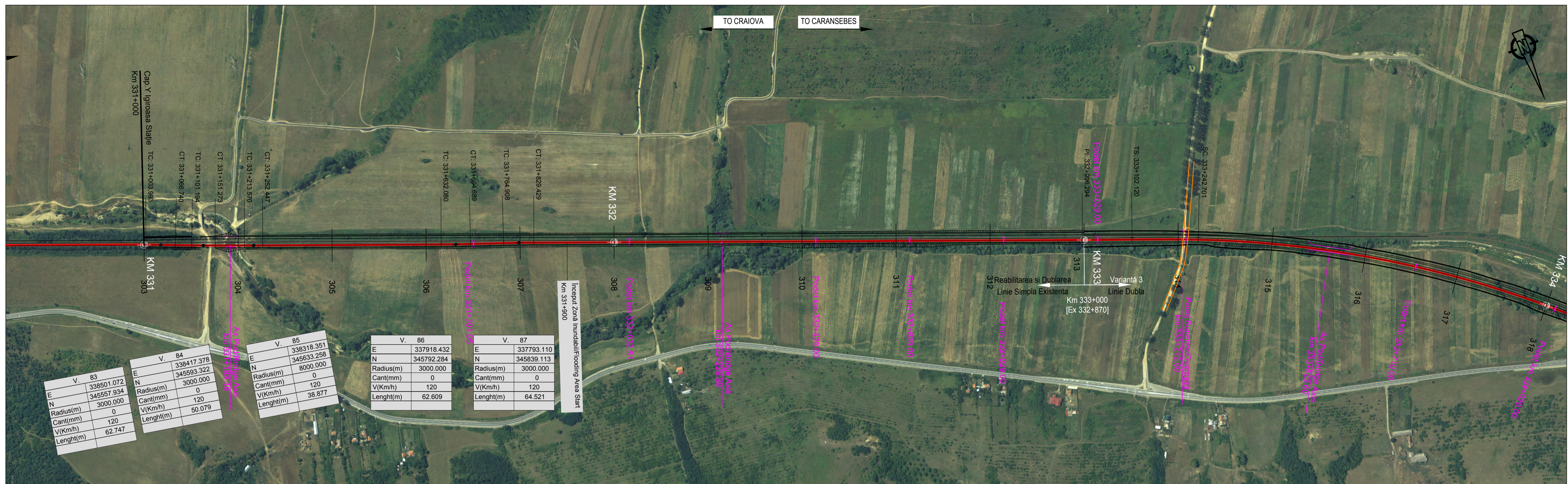
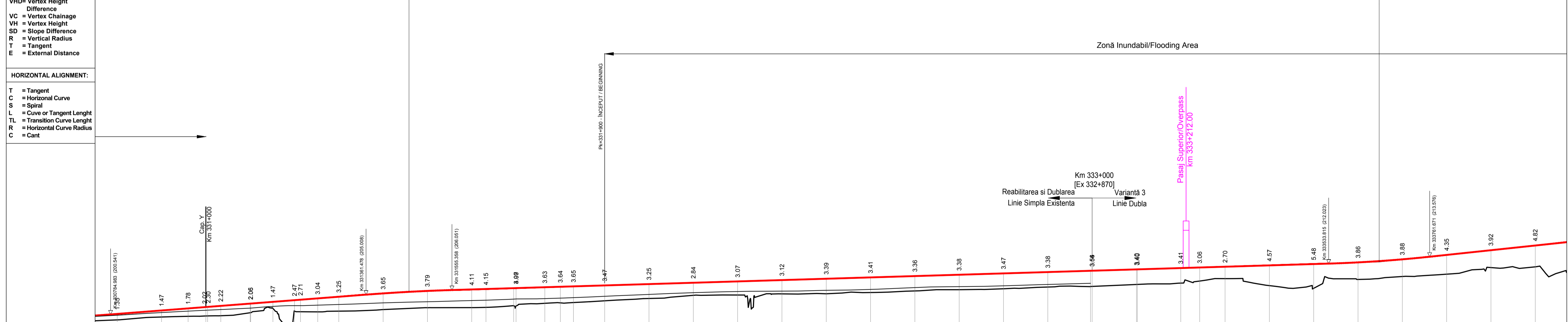


NOTE:
 1. Pozitiile kilometrice prezentate (km) se refera la pozitiile proiectate pe frul I. / The reported kilometer positions (km) refer to designed positions on track I.
 2. In profilul longitudinal, podelele și lucrările de consolidare nu sunt reprezentate. / In the longitudinal profile, culverts and consolidation works are not represented.
 3. Pentru tronsoanele în care traseul orizontal este neschimbat în comparație cu cel existent, cotele terenului corespund cu cotele substratului căii. / For the sections where the horizontal alignment is unchanged compared to the existing, the ground levels correspond with the existing sub-ballast level.



PROFIL LONGITUDINAL / VERTICAL ALIGNMENT	L = 752.776	2189.329
VHD =	5.832	6.608
Grade =	0.775	0.302

PROFIL KILOMETRICE / VERTICAL CHAINAGE	331458.417	333647.746
Abbreviations and Acronyms	VC = 331458.417 VH = 205.759 SD = -0.473 R = 41000.000 T = 96.942 E = -0.115	VC = 333647.746 VH = 212.367 SD = 0.760 R = -30000.000 T = 113.931 E = 0.216



SCARA / SCALE X= 5000 SCARA / SCALE Y= 500																																		
Plan de Referință	190.00 m																																	
N. SECTIUNE / SECTION NUMBER	303		304		305		306		307		308		309		310		311		312		313		314		315		316		317		318			
NIVEL SUPERIOR SINA (NSS) / TOP OF RAIL (TOR)	200.66	201.43	201.60	202.47	202.99	203.38	203.76	203.86	204.16	204.53	205.29	205.85	206.19	207.39	208.30	209.20	209.81	210.11	211.14	211.32	211.62	211.92	212.30	212.99	213.96	215.04	216.11	216.11	216.11	216.11				
COTA TEREN (CT) / GROUND LEVEL (GL)	199.31	199.96	200.15	200.25	200.94	201.01	201.29	201.15	201.12	201.28	201.64	202.06	202.08	204.14	204.30	205.45	206.34	206.60	208.08	208.62	208.62	207.05	206.44	208.44	209.11	209.63	211.12	211.29	211.29	211.29				
NSS EXISTENTA / EXISTING TOR	200.36	200.96	201.48	202.47	202.99	203.38	203.76	203.86	204.16	204.53	205.29	205.85	206.19	207.39	208.30	209.20	209.81	210.11	211.14	211.32	211.62	211.92	212.30	212.99	213.96	215.04	216.11	216.11	216.11	216.11				
KILOMETRAJ / KILOMETERS	33000.00	33000.00	33000.00	33000.00	33000.00	33000.00	33000.00	33000.00	33000.00	33000.00	33000.00	33000.00	33000.00	33000.00	33000.00	33000.00	33000.00	33000.00	33000.00	33000.00	33000.00	33000.00	33000.00	33000.00	33000.00	33000.00	33000.00	33000.00	33000.00	33000.00				
POZITII KILOMETRICE / CHAINAGE	L=339.89	331	L=67.47	R=3000.00	L=62.30	R=3000.00	L=70.22	R=3000.00	L=62.61	R=3000.00	L=68.52	332	L=379.63	R=3000.00	L=70.22	R=3000.00	L=1166.86	333	L=105.83	TL=140.58	334	L=105.83	TL=140.58	335	L=105.83	TL=140.58	336	L=105.83	TL=140.58	337	L=105.83	TL=140.58		
TRASEU IN PLAN / HORIZONTAL ALIGNMENT																																		

LEGENDĂ / LEGEND

- Traseu C.F. Linie Dubla / Railway Alignment Double Line
- Traseu C.F. Linie Simpla / Railway Alignment Single Line
- Viaduct / Viaduct
- Pod / Underpass
- Pasaj superior / Overpass
- Podet / Culvert
- Podet existent / Existing Culvert
- Pod existent / Existing Bridge
- Tunel / Tunnel
- Area de siguranta si strada de acces / Safety area and access path
- Lucrări de consolidari / Consolidation Works
- Drumuri Deviate / Diverted Roads
- Treceri La Nivel / Level crossing

Scara / Scale 1: 5.000

SISTEM DE COORDONATE DE REFERINȚĂ
 Punct de Origine Pentru Sistem de Coordonate: S-42
 Unitatea de Măsură România: metri
 Proiecție: Stereio 70
 COORDINATE REFERENCE SYSTEM
 Datum: S-42 Romania Units: meters
 Projection: Stereo 70

REV.	DATA/DATE	DESCRIERE MODIFICARE / MODIFICATION DESCRIPTION
A	Mai 2020	Prima ediție SFF / FFS First submission
B	Sept 2020	Conform solicitărilor Beneficiarului din act nr.11/2/504/2020
C		
D		

FAZA PHASE	NUME NAME	SEMNTURĂ SIGNATURE
APROBAT APPROVED	S. Menichini	<i>S. Menichini</i>
VERIFICAT CHECKED	S. Menichini	<i>S. Menichini</i>
INTOCMIT ELABORATED	F. Sorge	<i>F. Sorge</i>
SCARA SCALE	1:5000 / 1:500	FOAIE SHEET 36 din 97 / 36 of 97

Cofinanta de Mecanismul pentru interconectarea Europei al Uniunii Europene

DATA DATE Mai 2020

CLIENT CLIENT C.N.C.F. "C.F.R." - S.A.

CONSULTANT CONSULTANT ITALFERR

STUDIU DE FEZABILITATE PENTRU REABILITARE A LINIEI FERROVIARE CRAIOVA - CARANSEBES / FEASIBILITY STUDY FOR THE REHABILITATION OF THE RAILWAY LINE CRAIOVA - CARANSEBES

ISP CF Fondat in 1947

ITALROM INGINERIE INTERNATIONALA S.R.L.

DENUMIRE / TITLE: Interval Igrisoara - Prunisor Noua St. - km 331+000 - km 339+200 - 1 din 3 (Varianta 3) Interval Igrisoara - Prunisor Noua St. - km 331+000 - km 339+200 - 1 of 3 (Variant 3)

CODIFICARE / CODIFICATION SYSTEM: E218 1 SF 24 K5 AL 0 05 036 B