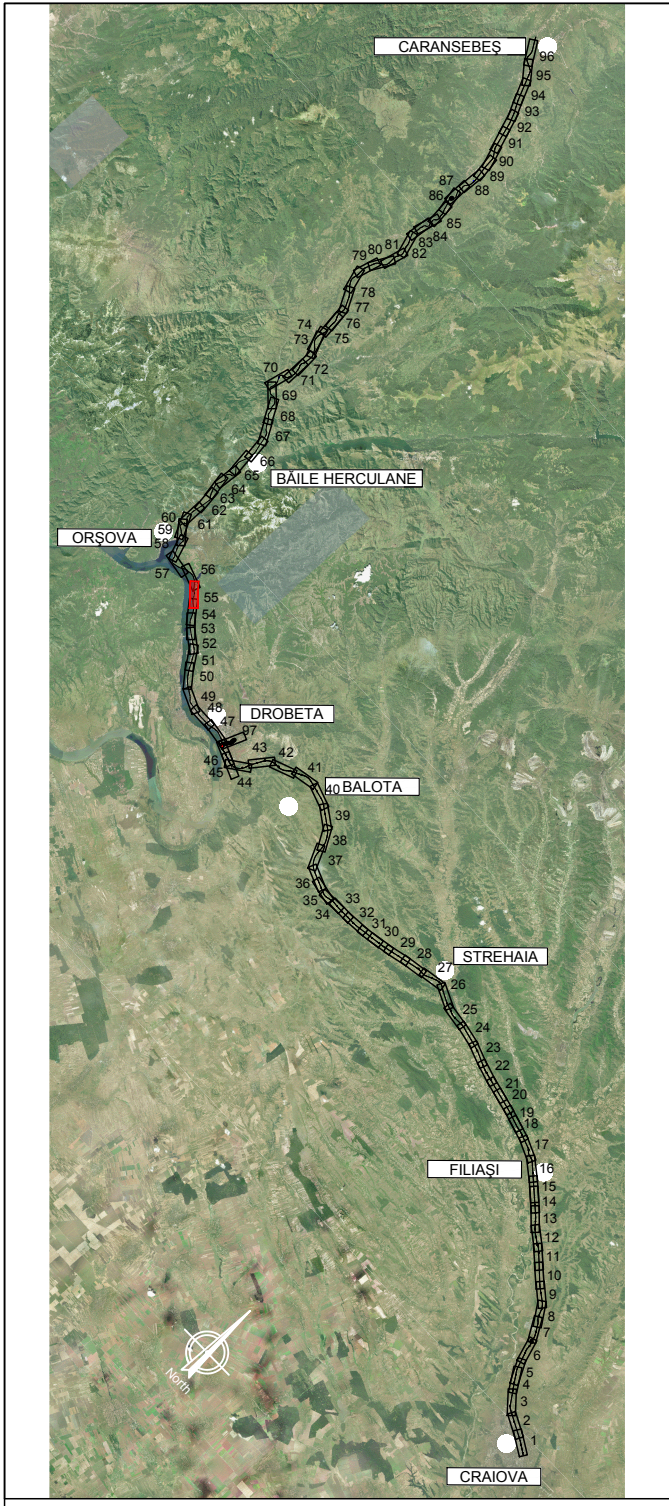
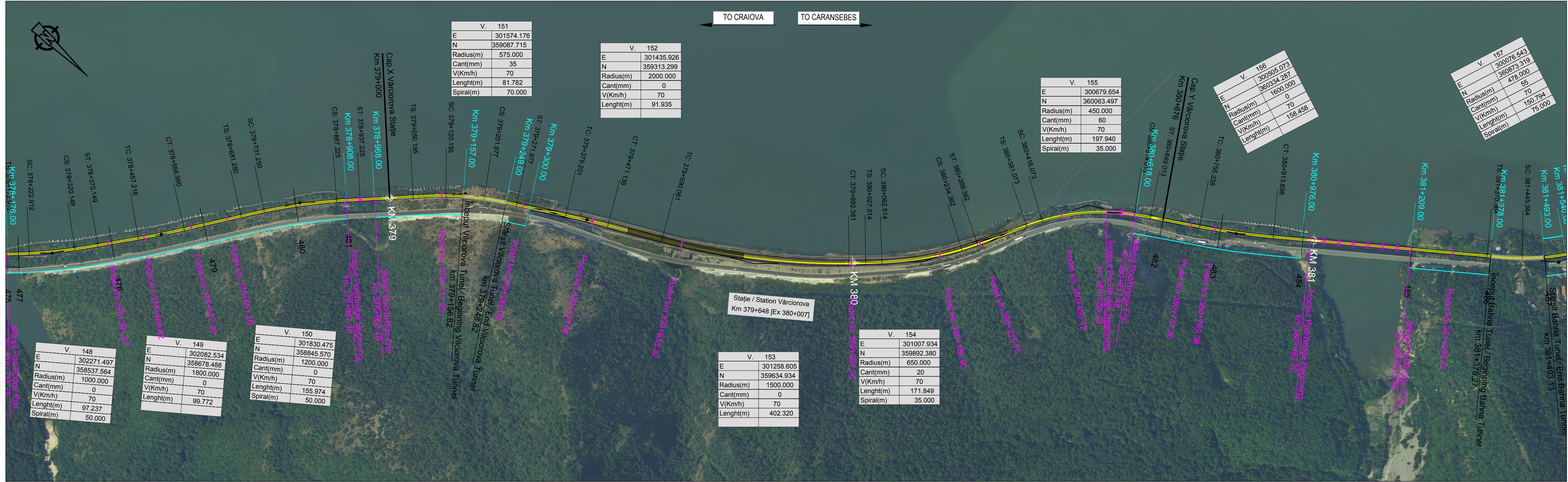


**NOTE:**

1. Pozitiile kilometrice prezantate (km) se refera la pozitiile proiectate pe frul I. / The reported kilometric positions (km) refer to designed positions on track I.
2. In profilul longitudinal, podelele si lucrările de consolidare nu sunt reprezentate. / In the longitudinal profile, culverts and consolidation works are not represented.
3. Pentru tronsoanele in care traseu orizontal este neschimbat in comparatie cu cel existent, cotele terenului corespund cu cotele substratului caili. / For the sections where the horizontal alignment is unchanged compared to the existing, the ground levels correspond with the existing sub-ballast level.



PROFIL LONGITUDINAL / VERTICAL ALIGNMENT	L =	1940.331	322.022	1029.277
Grade =	VHD =	4.267	-0.004	-2.274
PROFIL KILOMETRICE / VERTICAL CHAINAGE		0.220	-0.001	-0.221

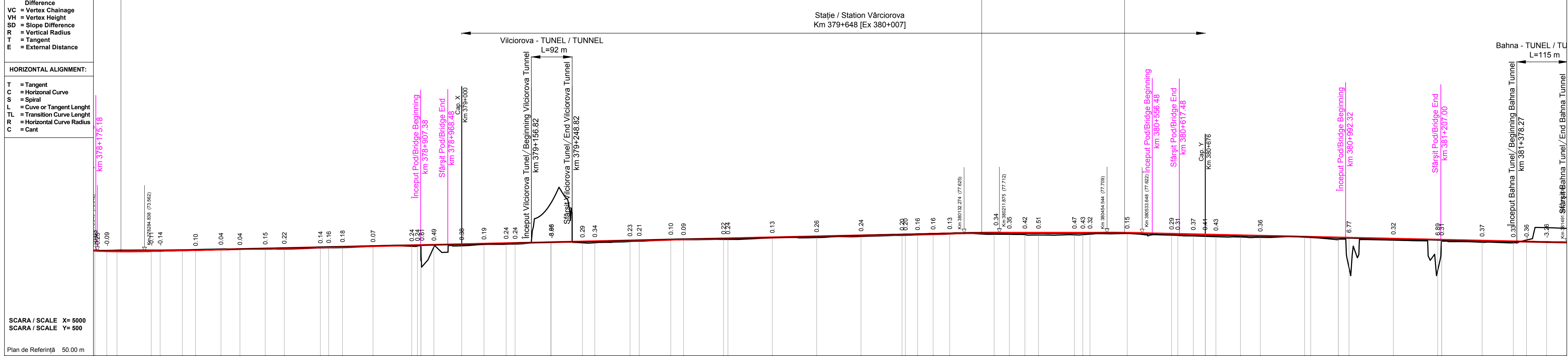
**Abbreviations and Acronyms**

**VERTICAL ALIGNMENT:**

L = Grade Length  
VHD = Vertex Height Difference  
VC = Vertex Chainage  
VH = Vertex Height  
SD = Slope Difference  
R = Vertical Radius  
T = Tangent  
E = External Distance

**HORIZONTAL ALIGNMENT:**

T = Tangent  
C = Horizontal Curve  
S = Spiral  
L = Curve or Tangent Length  
TL = Transition Curve Length  
R = Horizontal Curve Radius  
C = Cant



N. SECTIUNE / SECTION NUMBER	7677	478	479	480	481	482	483	484	485	486	487	488
NIVEL SUPERIOR SINA (NSS) / TOP OF RAIL (TOR)	73.58	73.53	73.60	73.64	73.75	73.82	73.94	74.04	74.16	74.26	74.43	74.53
COTA TEREN (CT) / GROUND LEVEL (GL)	73.09	73.78	73.75	73.75	73.75	73.94	74.04	74.16	74.26	74.43	74.53	74.53
NSS EXISTENTA / EXISTING TOR	73.09	73.78	73.75	73.75	73.75	73.94	74.04	74.16	74.26	74.43	74.53	74.53
KILOMETRAJ / KILOMETERS	378200.00	378300.00	378400.00	378500.00	378600.00	378700.00	378800.00	378900.00	379000.00	379100.00	379200.00	379300.00
POZITII KILOMETRICE / CHAINAGE	TL=50.00	R=1000.00	TL=50.00	L=124.26	TL=50.00	TL=50.00	L=112.97	TL=70.00	L=107.22	R=1500.00	L=118.93	R=1500.00
TRASEU IN PLAN / HORIZONTAL ALIGNMENT	L=87.24	L=87.24	L=87.24	L=87.24	L=87.24	L=87.24	L=87.24	L=87.24	L=87.24	L=87.24	L=87.24	L=87.24

**LEGENDĂ / LEGEND**

- Traseu C.F. Linie Dubla Railway Alignment Double Line
- Traseu C.F. Linie Simpla Railway Alignment Single Line
- Viaduct
- Pod Underpass
- Pasaj superior Overpass
- Podet Culvert
- Podet existent Existing Culvert
- Pod existent Existing Bridge
- Tunel Tunnel
- Area de siguranta si strada de acces Safety area and access path
- Lucrări de consolidari Consolidation Works
- Drumuri Deviate Diverted Roads
- Treceri La Nivel Level Crossing

Scara / Scale 1: 5.000

**SISTEM DE COORDONATE DE REFERINTĂ**  
Punct de Origine Pentru Sistem de Coordonate: S-42  
Unitatea de Măsură România: metri  
Proiecție: Stere0 70

**COORDINATE REFERENCE SYSTEM**  
Datum: S-42 Romania Units: meters  
Projection: Stereo 70

REV.	DATA/DATE	DESCRIERE MODIFICARE / MODIFICATION DESCRIPTION
A	Mai 2020	Prima ediție SFF / FFS First submission
B	Sept 2020	Conform solicitărilor Beneficiarului din act nr.11/2/504/2020
C		
D		

FAZA PHASE	NUME NAME	SEMNATURA SIGNATURE
APROBAT APPROVED	S. Menichini	<i>[Signature]</i>
VERIFICAT CHECKED	S. Menichini	<i>[Signature]</i>
INTOCMIT ELABORATED	F. Sorge	<i>[Signature]</i>

SCARA SCALE 1:5000 / 1:500

FOAIE SHEET 55 din 97 / 55 of 97

DATA DATE Mai 2020

Cofinanta de Mecanismul pentru interconectarea Europei al Uniunii Europene

CLIENT CLIENT C.N.C.F. "C.F.R." - S.A.

CONSULTANT CONSULTANT

STUDIU DE FEZABILITATE PENTRU REABILITARE A LINIEI FERROVIARE CRAIOVA - CARANSEBES / FEASIBILITY STUDY FOR THE REHABILITATION OF THE RAILWAY LINE CRAIOVA - CARANSEBES

ITALFERR GRUPPO FERROVIE DELLO STATO ITALIANO

ISP CF Fondat in 1947

ITALROM INGINIERI INTERNAȚIONALA S.R.L.

DENUMIRE / TITLE: Vălciorova Hm. - km 379+000 - km 380+676 - 1 din 1

Vălciorova Hm. - km 379+000 - km 380+676 - 1 of 1

CODIFICARE / CODIFICATION SYSTEM:

NUMAR PROIECT	NUMAR SECTIUNE	FAZA DE PROIECTARE	STADIU / STAGE	TIP DOCUMENT	SPECIALIZATA	NUMAR OBIECT	NUMEROTARE PROGRESIVA	REVIZIE
E218	S	SF	34	K5	AL	0	055	B