

NOTE:

1. Pozitiile kilometrice prezantate (km) se refera la pozitiile proiectate pe frul I. / The reported kilometeric positions (km) refer to designed positions on track I.
2. In profilul longitudinal, podelele si lucrările de consolidare nu sunt reprezentate. / In the longitudinal profile, culverts and consolidation works are not represented.
3. Pentru tronsoanele in care traseu orizontal este neschimbat in comparatie cu cel existent, cotele terenului corespund cu cotele substratiului caili. / For the sections where the horizontal alignment is unchanged compared to the existing, the ground levels correspond with the existing sub-ballast level.

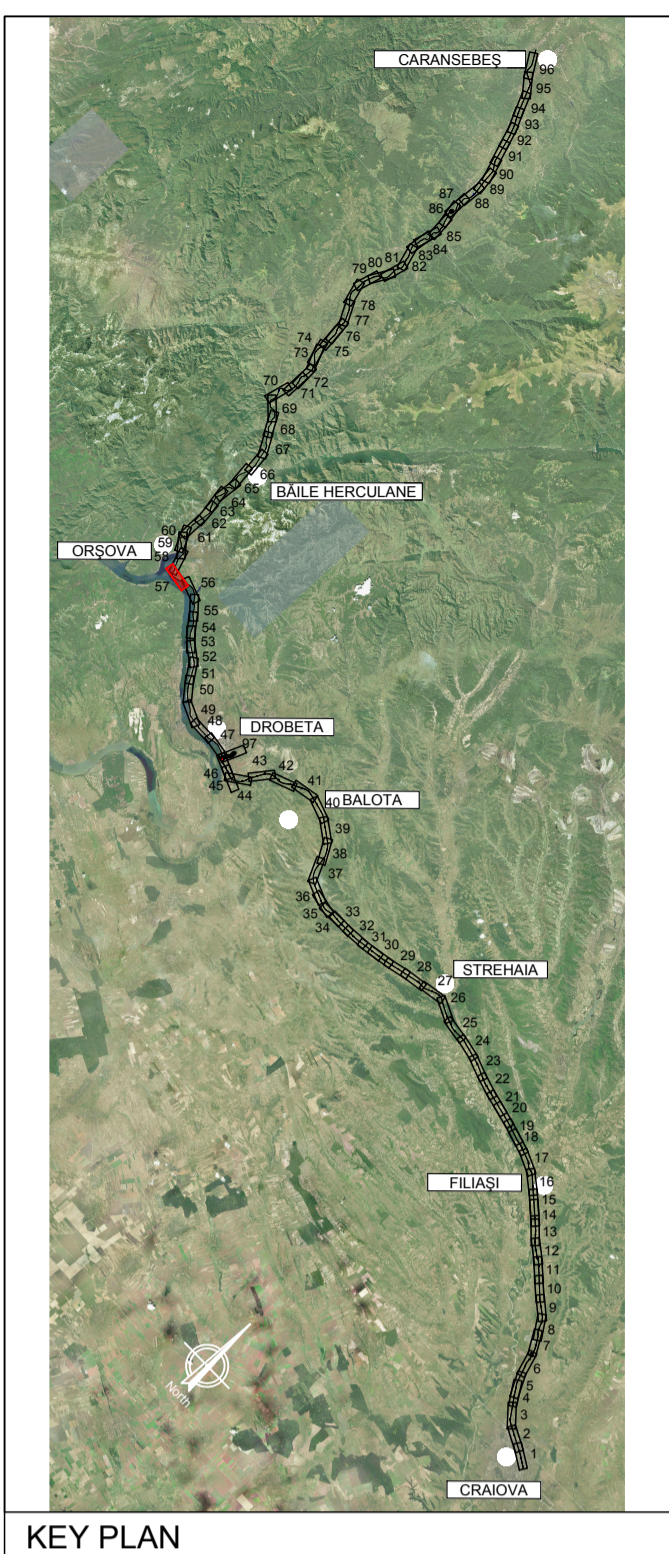
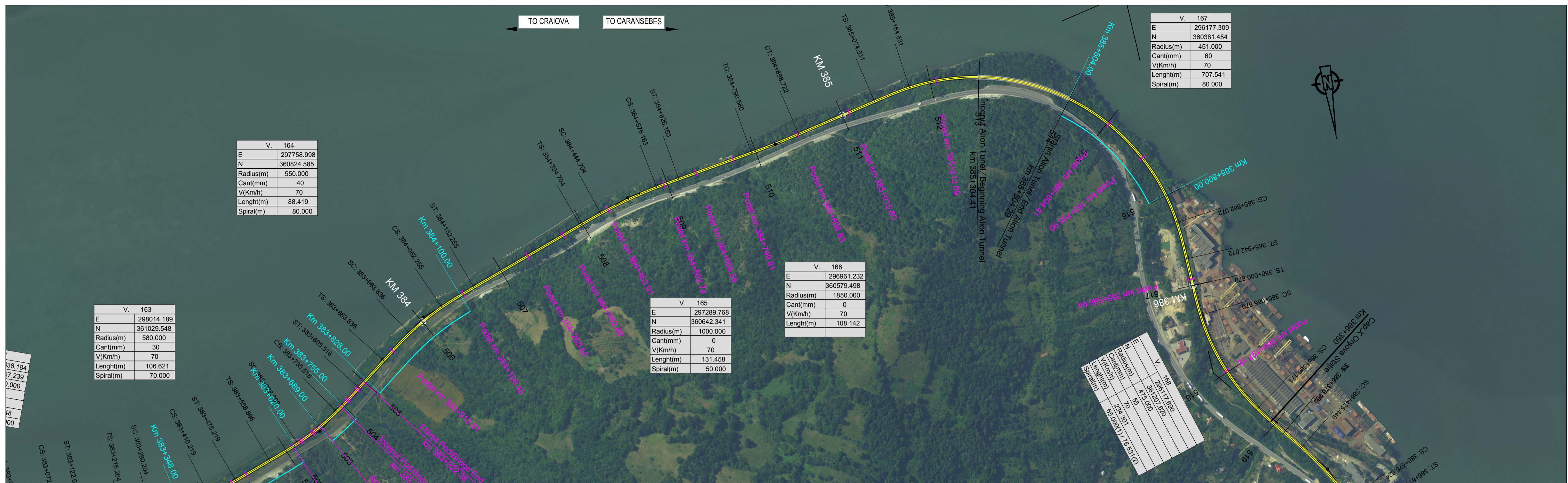
V. 163	
E	298014.189
N	361029.548
Radius(m)	580.000
Cant(mm)	30
V(Km/h)	70
Length(m)	106.621
Spiral(m)	70.000

V. 164	
E	297758.998
N	360624.385
Radius(m)	550.000
Cant(mm)	40
V(Km/h)	70
Length(m)	88.419
Spiral(m)	80.000

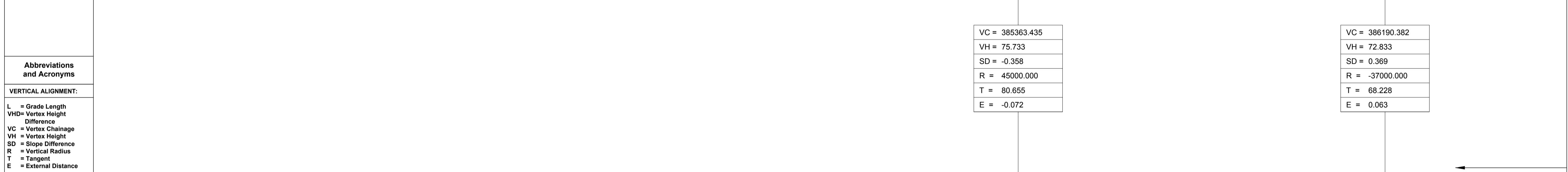
V. 165	
E	297239.768
N	362642.341
Radius(m)	1000.000
Cant(mm)	0
V(Km/h)	70
Length(m)	131.458
Spiral(m)	50.000

V. 166	
E	296961.232
N	360579.498
Radius(m)	1850.000
Cant(mm)	0
V(Km/h)	70
Length(m)	108.142

V. 167	
E	296177.309
N	360381.454
Radius(m)	451.000
Cant(mm)	60
V(Km/h)	70
Length(m)	707.541
Spiral(m)	80.000



PROFIL LONGITUDINAL / VERTICAL ALIGNMENT	L = 3840.062	VHD = 0.298	Grade = 0.008	826.947	-2.900	-0.351
PROFIL KILOMETRICE / VERTICAL CHAINAGE				385363.435		386190.382



N. SECTIUNE / SECTION NUMBER	499		500		50002		503		504		505		506		507		508		509		510		511		512		513		514		515		516		517		518		519									
	NIVEL SUPERIOR SINA (NSS) / TOP OF RAIL (TOR)	75.57	75.58	75.59	75.60	75.61	75.62	75.63	75.64	75.65	75.66	75.67	75.68	75.69	75.70	75.71	75.72	75.73	75.74	75.75	75.76	75.77	75.78	75.79	75.80	75.81	75.82	75.83	75.84	75.85	75.86	75.87	75.88	75.89	75.90	75.91	75.92	75.93	75.94	75.95	75.96	75.97	75.98	75.99	76.00			
COTA TEREN (CT) / GROUND LEVEL (GL)	75.57	75.58	75.59	75.60	75.61	75.62	75.63	75.64	75.65	75.66	75.67	75.68	75.69	75.70	75.71	75.72	75.73	75.74	75.75	75.76	75.77	75.78	75.79	75.80	75.81	75.82	75.83	75.84	75.85	75.86	75.87	75.88	75.89	75.90	75.91	75.92	75.93	75.94	75.95	75.96	75.97	75.98	75.99	76.00				
NSS EXISTENTA / EXISTING TOR	75.57	75.58	75.59	75.60	75.61	75.62	75.63	75.64	75.65	75.66	75.67	75.68	75.69	75.70	75.71	75.72	75.73	75.74	75.75	75.76	75.77	75.78	75.79	75.80	75.81	75.82	75.83	75.84	75.85	75.86	75.87	75.88	75.89	75.90	75.91	75.92	75.93	75.94	75.95	75.96	75.97	75.98	75.99	76.00				
KILOMETRAJ / KILOMETERS	383300.00	383400.00	383500.00	383600.00	383700.00	383800.00	383900.00	384000.00	384100.00	384200.00	384300.00	384400.00	384500.00	384600.00	384700.00	384800.00	384900.00	385000.00	385100.00	385200.00	385300.00	385400.00	385500.00	385600.00	385700.00	385800.00	385900.00	386000.00	386100.00	386200.00	386300.00	386400.00	386500.00	386600.00	386700.00	386800.00	386900.00	387000.00	387100.00	387200.00	387300.00	387400.00	387500.00	387600.00	387700.00	387800.00	387900.00	388000.00

SCARA / SCALE X= 5000	SCARA / SCALE Y= 500
Plan de Referinta / 50.00 m	
POZITII KILOMETRICE / CHAINAGE	
TRASEU IN PLAN / HORIZONTAL ALIGNMENT	

LEGENDĂ / LEGEND

- Traseu C.F. Linie Dubla Railway Alignment Double Line
- Traseu C.F. Linie Simpla Railway Alignment Single Line
- Viaduct
- Pod Underpass
- Pasaj superior Overpass
- Podet Culvert
- Podet existent Existing Culvert
- Pod existent Existing Bridge
- Tunel Tunnel
- Area de siguranta si strada de acces Safety area and access path
- Lucrări de consolidari Consolidation Works
- Drumuri Deviate Diverted Roads
- Treceri La Nivel Level Crossing

Scara / Scale 1: 5.000

SISTEM DE COORDONATE DE REFERINTĂ

Punct de Origine Pentru Sistem de Coordonate: S-42

Unitatea de Măsură România: metri

Proiecție: Stereio 70

COORDINATE REFERENCE SYSTEM

Datum: S-42 Romania Units: meters

Projection: Stereo 70

REV.	DATA/DATE	DESCRIERE MODIFICARE / MODIFICATION DESCRIPTION
A	Mai 2020	Prima ediție SFF / FFS First submission
B	Sept 2020	Conform solicitărilor Beneficiarului din act nr.11/2/504/2020
C		
D		

FAZA PHASE	NUME NAME	SEMNTURA SIGNATURE
APROBAT APPROVED	S. Menichini	<i>S. Menichini</i>
VERIFICAT CHECKED	S. Menichini	<i>S. Menichini</i>
INTOCMIT ELABORATED	F. Sorge	<i>F. Sorge</i>
SCARA SCALE	1:5000 / 1:500	FOAIE SHEET 57 din 97 / 57 of 97

Cofinanta de Mecanismul pentru interconectarea Europei al Uniunii Europene

DATA DATE Mai 2020

CLIENT CLIENT C.N.C.F. "C.F.R." - S.A.

CONSULTANT CONSULTANT ITALFERR

STUDIU DE FEZABILITATE PENTRU REABILITARE A LINIEI FERROVIARE CRAIOVA - CARANSEBES / FEASIBILITY STUDY FOR THE REHABILITATION OF THE RAILWAY LINE CRAIOVA - CARANSEBES

ISP CF

ITALROM

DENUMIRE / TITLE: Interval Vărciorova Hm. - Orșova St. - km 380+676 - km 386+350 - 2 din 2

Interval Vărciorova Hm. - Orșova St. - km 380+676 - km 386+350 - 2 of 2

CODIFICARE / CODIFICATION SYSTEM:

NUMAR PROIECT	FAZA DE PROIECTARE	STATE / INTERVAL	TIP DOCUMENT	SPECIALIZATA	NUMAR OBIECT	NUMEROTARE PROGRESIVA	REVIZIE
E218	I	SF	35	K5	AL	0	05
						057	B