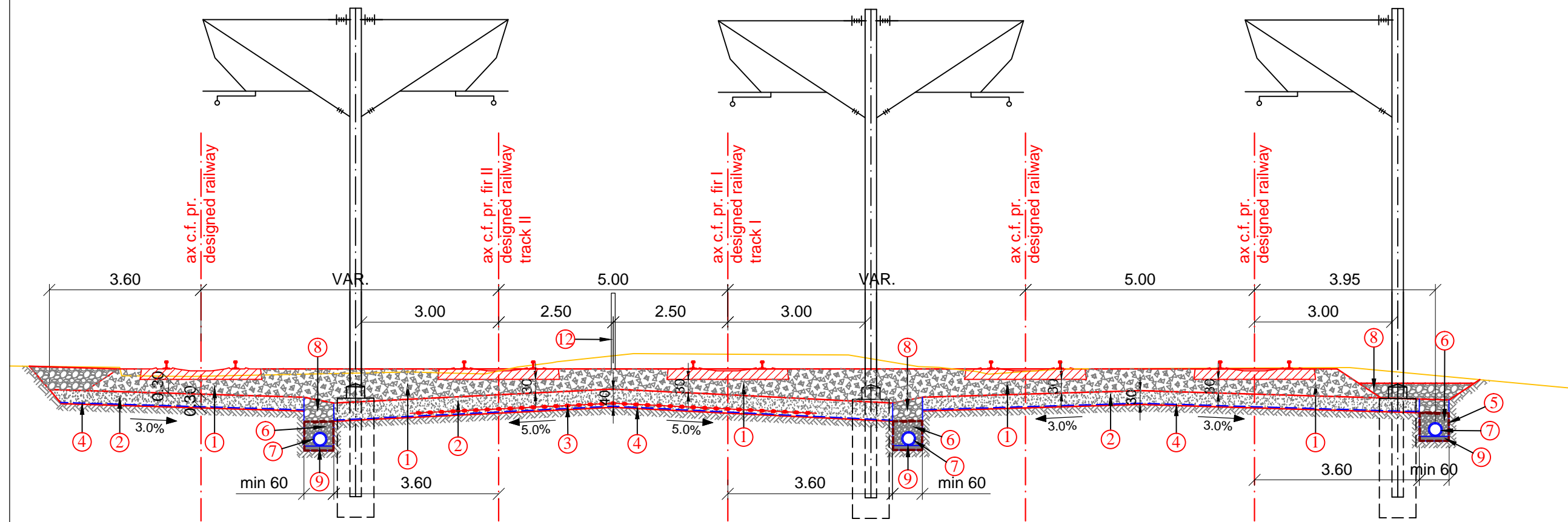











PROFIL TRANSVERSAL TIP APLICABIL ÎN STAȚII CU LINIE DUBLĂ PE ZONA FĂRĂ PEROANE  
 TYPICAL CROSS PROFILE APPLICABLE TO RAILWAY STATIONS WITH DOUBLE TRACK ON THE  
 AREA WITHOUT PLATFORM  
 SCARA / SCALE 1:100



LEGENDA/ LEGEND

- ① Piatra sparta  
Crushed stone
- ② Substratul caii  
Subgrade
- ③ Geogriile biaxiale  
Biaxial geogrids
- ④ Geotextil separatie  
Separating geotextile
- ⑤ Geotextil filtrare  
Filtering geotextile
- ⑥ Material drenant sort 8-32mm  
Draining material sort 8-32mm
- ⑦ Tub PEHD riflat, perforat Ø = 150-400mm  
Longitudinal drainage made out of Ø=150-400mm PEHD tube
- ⑧ Material drenant sort 32-63mm  
Draining material sort 32-63mm
- ⑨ Strat de nisip  
Sand layer
- ⑩ Peron  
Platform
- ⑪ Mana curenta  
Handrail
- ⑫ Gard de protectie  
Protection fence
- ⑬ Pamant local categoria CIII1 conform STAS 7582-91  
(QS1, QS2 conform fisa UIC 719 figura 5)/  
Local soil category CIII1 acc. to stas 7582-91  
(QS1, QS2 acc. to sheet UIC 719 figure 5)

|  |   |   |              |   |
|--|---|---|--------------|---|
| <br><small>Colaborant de Mecanismul pentru Interconectarea Europei și Uniunii Europene</small>  | <br><small>GUVERNUL ROMÂNIEI</small> |   |              |   |
| <br><b>CLIENT / CLIENT</b> <span style="margin-left: 50px;"><b>C.N.C.F. "C.F.R." - S.A.</b></span>  |   |   |              |   |
|     |   |   |              |   |
| <b>CONSULTANT / CONSULTANT</b>   |   |   |              |   |
| Faza<br>Phase  | Positia<br>Position   | Nume<br>Name                                    | Data<br>Date | Semnatura<br>Signature  |
| Aprobat<br>Approved  | Manager de Proiect<br>Project Manager   | Sergio MENICHINI                                | 06.2020      |  |
| Verificat<br>Checked   | Expert Cheie<br>Key Expert  | Sergio MENICHINI                                | 06.2020      |  |
| Întocmit<br>Elaborated   | Proiectant<br>Designer  | Ioana CRACIUN                                   | 06.2020      |  |
| <b>SUBCONSULTANT / SUBCONSULTANT</b>   |   |   |              |   |
| Aprobat<br>Approved  | Responsabil Subconsultant<br>Subconsultant Responsible  |   |              |   |
| Întocmit<br>Elaborated   | Proiectant<br>Designer  |   |              |   |
| <b>Studiu de Fezabilitate pentru Reabilitarea liniei feroviare Craiova - Drobeta Turnu Severin - Caransebes, parte a Coridorului Orient/Est Mediteranean - Feasibility Study For The Rehabilitation Of The Railway Line Craiova - Caransebes</b>   |   |   |              | Proiect/Project<br>74 / 2018<br>Faza/Phase<br>S.F.                                  |
| <b>Denumire / Title :</b>  |   |   |              |   |
| PROFIL TRANSVERSAL TIP APLICABIL ÎN STAȚII CU LINIE DUBLĂ PE ZONA FĂRĂ PEROANE<br>TYPICAL CROSS PROFILE APPLICABLE TO RAILWAY STATIONS WITH DOUBLE TRACK ON THE AREA WITHOUT PLATFORM  |   |   |              |   |
| Codificare / Codification System   |   |   |              |   |
| E 2 1 8 0 S F 0 0 W A T R X 0 0 1 0 0 0  |   |   |              |   |
| Istoricul reviziilor / Revision History  |   |   |              |   |
| Rev.   | Data/Date   | Descriere Modificare / Modification description |              |   |
| 1  |   |   |              |   |
| 2  |   |   |              |   |
| 3  |   |   |              |   |
| 4  |   |   |              |   |
| Responsabilitatea privind această publicație revine integral autorului. Uniunea Europeană nu este responsabilă pentru modul în care sunt utilizate informațiile publicate.<br>The contents of this publication are the sole responsibility of (name of the implementing partner) and do not necessarily reflect the opinion of the European Union. |   |   |              |   |