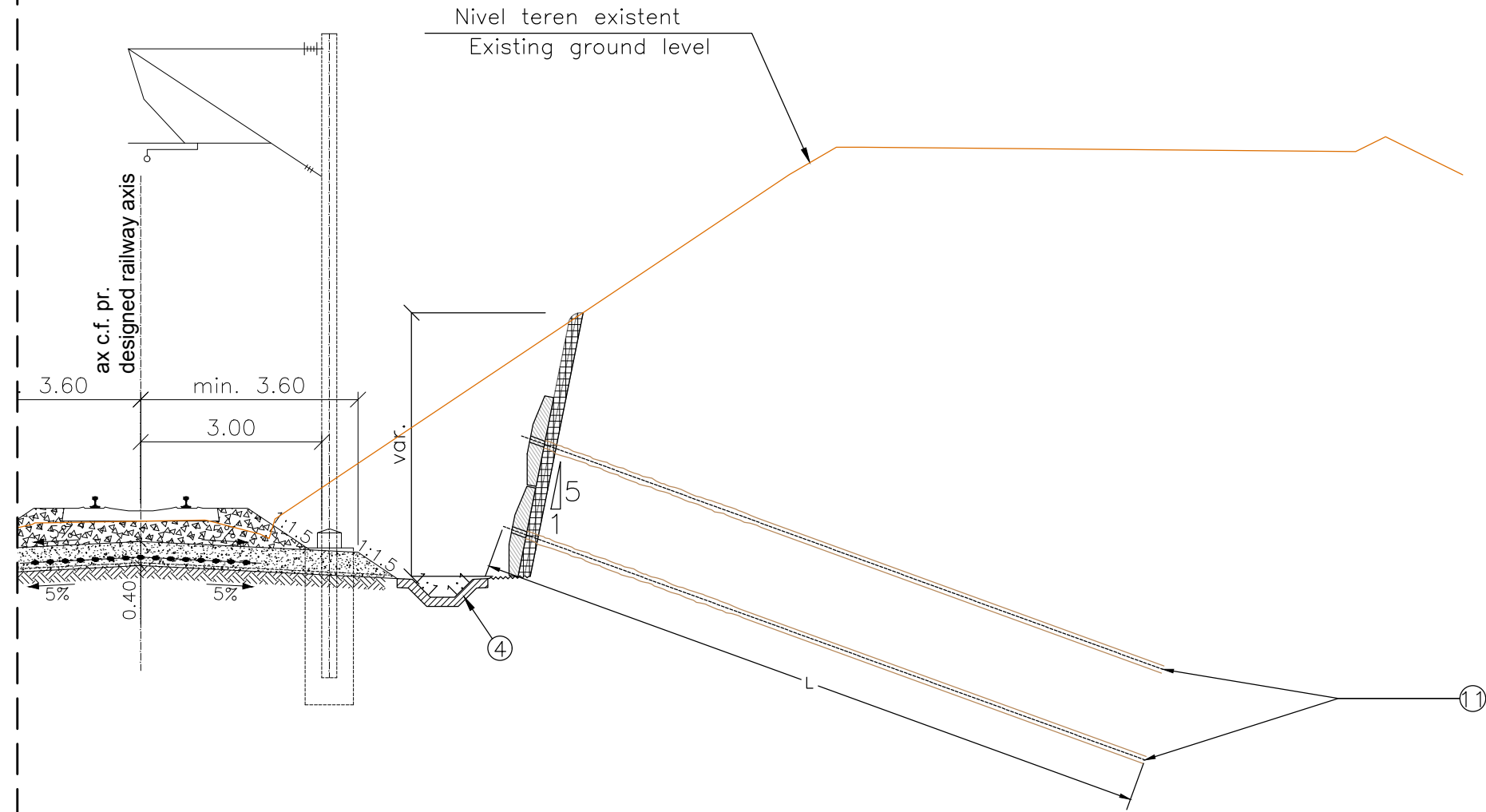


LEGENDA/LEGEND

- ④ Sant din beton  
Concrete ditch
- ⑧ Ancore pasive  
Passive anchors
- ⑨ Torcret  
Shotcrete
- ⑪ Protecție versant cu plăci prefabricate din b. a. și ancore pasive  
Slope protection with reinforced concrete precast plate and passive rock bolts



☒ Beton torcretat clasa C25/30  
Shotcrete class C25/30




INTERVALE KILOMETRICE / KILOMETER INTERVALS  
CALE SIMPLA / SIMPLE TRACK  
VARCIOROVA – ORSOVA




km 383+348.00 – km 383+620.00

Scara 1:100/Scale 1:100

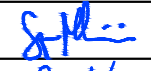
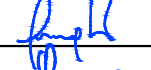






**CLIENT / CLIENT**      **C.N.C.F. "C.F.R." - S.A.**

**CONSULTANT / CONSULTANT**

Faza Phase	Posiția Position	Nume Name	Data Date	Semnatura Signature
Aprobat Approved	Manager de Proiect Project Manager	Sergio MENICHINI	06.2020	
Verificat Checked	Expert Cheie Key Expert	Lorenzo SABINI	06.2020	
Întocmit Elaborated	Proiectant Designer	Giovanni VOIRO	06.2020	

**SUBCONSULTANT / SUBCONSULTANT**

Aprobat Approved	Responsabil Subconsultant Subconsultant Responsible			
Întocmit Elaborated	Proiectant Designer			

*Studiu de Fezabilitate pentru Reabilitarea liniei feroviare  
Craiova - Drobeta Turnu Severin - Caransebes,  
parte a Coridorului Orient/Est Mediteranean -  
Feasibility Study For The Rehabilitation Of The Railway Line Craiova - Caransebes*

Proiect/Project  
74 / 2018  
Faza/Phase  
S.F.

**Denumire / Title :**  
Profil transversal tip, consolidari Km pr. 383+348÷383+620 (Linia simpla)  
Cross section type, consolidation works Km pr. 383+348÷383+620 (Simple line)

**Codificare / Codification System**  
E 2 1 8   I   S F   3 5   W A   C T   0   0 3   0 0 1   A

**Istoricul reviziilor / Revision History**

Rev.	Data/Date	Descriere Modificare / Modification description
1		
2		
3		
4		

Responsabilitatea privind această publicație revine integral autorului. Uniunea Europeană nu este responsabilă pentru modul în care sunt utilizate informațiile publicate.  
The contents of this publication are the sole responsibility of (name of the implementing partner) and do not necessarily reflect the opinion of the European Union.