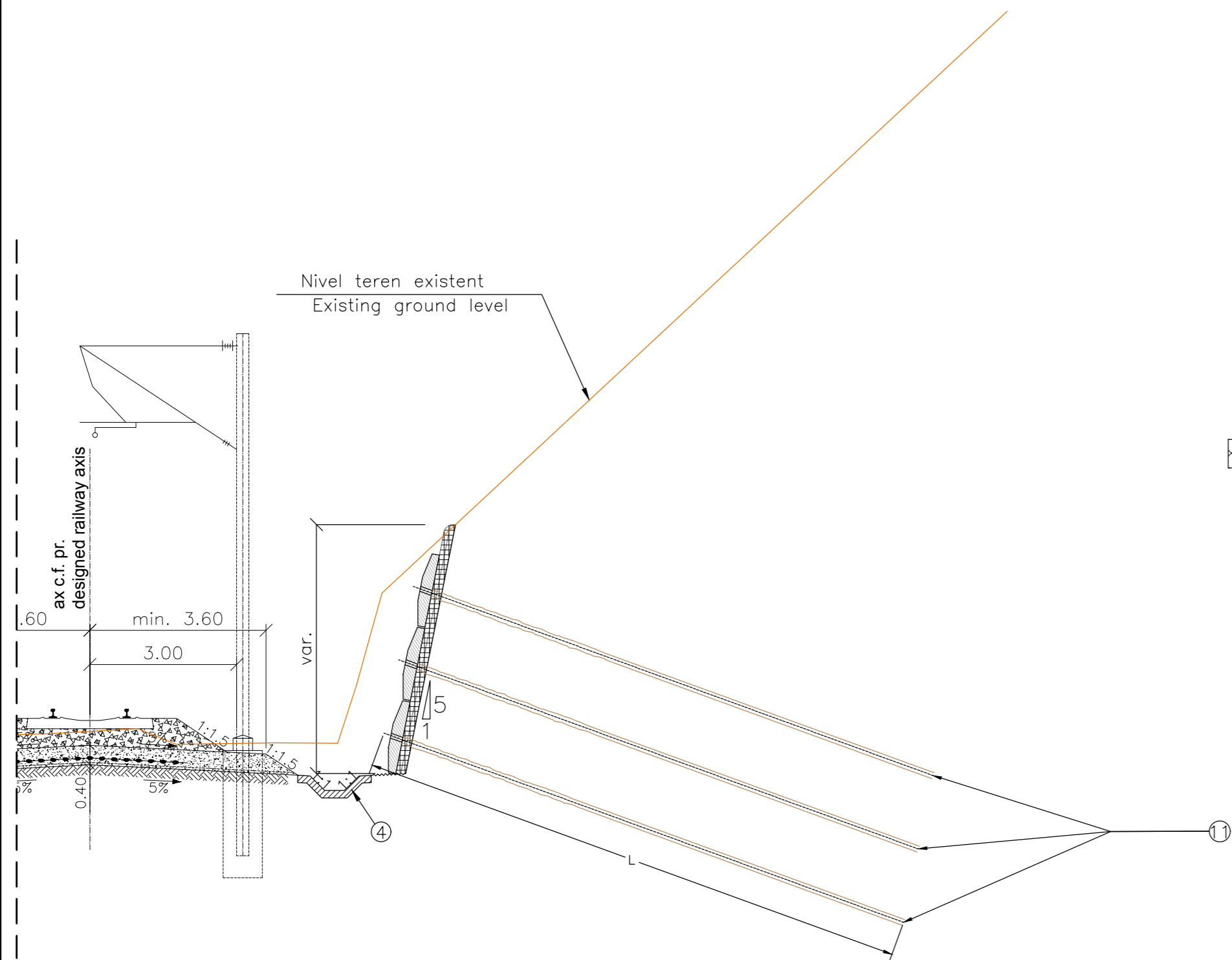


LEGENDA/LEGEND

- ④ Sant din beton
Concrete ditch
- ⑧ Ancore pasive
Passive anchors
- ⑨ Torcret
Shotcrete
- ⑪ Protecție versant cu plăci prefabricate din b. a. și ancore pasive
Slope protection with reinforced concrete precast plate and passive rock bolts

☒ Beton torcretat clasa C25/30
Shotcrete class C25/30




INTERVALE KILOMETRICE / KILOMETER INTERVALS

CALE SIMPLA / SIMPLE TRACK
ORSOVA – VALEA CERNEI

km 388+942.00 – km 389+050.00

Scara 1:100/Scale 1:100



CLIENT / CLIENT **C.N.C.F. "C.F.R." - S.A.**





CONSULTANT / CONSULTANT

| Faza Phase | Positia Position | Nume Name | Data Date | Semnatura Signature |
|------------------------|---------------------------------------|------------------|--------------|---|
| Aprobat Approved | Manager de Proiect Project Manager | Sergio MENICHINI | 06.2020 |  |
| Verificat Checked | Expert Cheie Key Expert | Lorenzo SABINI | 06.2020 |  |
| Întocmit Elaborated | Proiectant Designer | Giovanni VOIRO | 06.2020 |  |

SUBCONSULTANT / SUBCONSULTANT

| | | | | |
|------------------------|--|--|--|--|
| Aprobat Approved | Responsabil Subconsultant Subconsultant Responsible | | | |
| Întocmit Elaborated | Proiectant Designer | | | |

Studiu de Fezabilitate pentru Reabilitarea liniei feroviare Craiova - Drobeta Turnu Severin - Caransebes, parte a Coridorului Orient/Est Mediteranean - Feasibility Study For The Rehabilitation Of The Railway Line Craiova - Caransebes

Proiect/Project
74 / 2018
Faza/Phase
S.F.

Denumire / Title :
Profil transversal tip, consolidari Km pr. 388+942÷389+050 (Linia simpla)
Cross section type, consolidation works Km pr. 388+942÷389+050 (Simple line)

Codificare / Codification System
E 2 1 8 I S F 3 7 W A C T 0 0 1 0 0 1 A

Istoricul reviziilor / Revision History

| Rev. | Data/Date | Descriere Modificare / Modification description |
|------|-----------|---|
| 1 | | |
| 2 | | |
| 3 | | |
| 4 | | |

Responsabilitatea privind această publicație revine integral autorului. Uniunea Europeană nu este responsabilă pentru modul în care sunt utilizate informațiile publicate.
The contents of this publication are the sole responsibility of (name of the implementing partner) and do not necessarily reflect the opinion of the European Union.