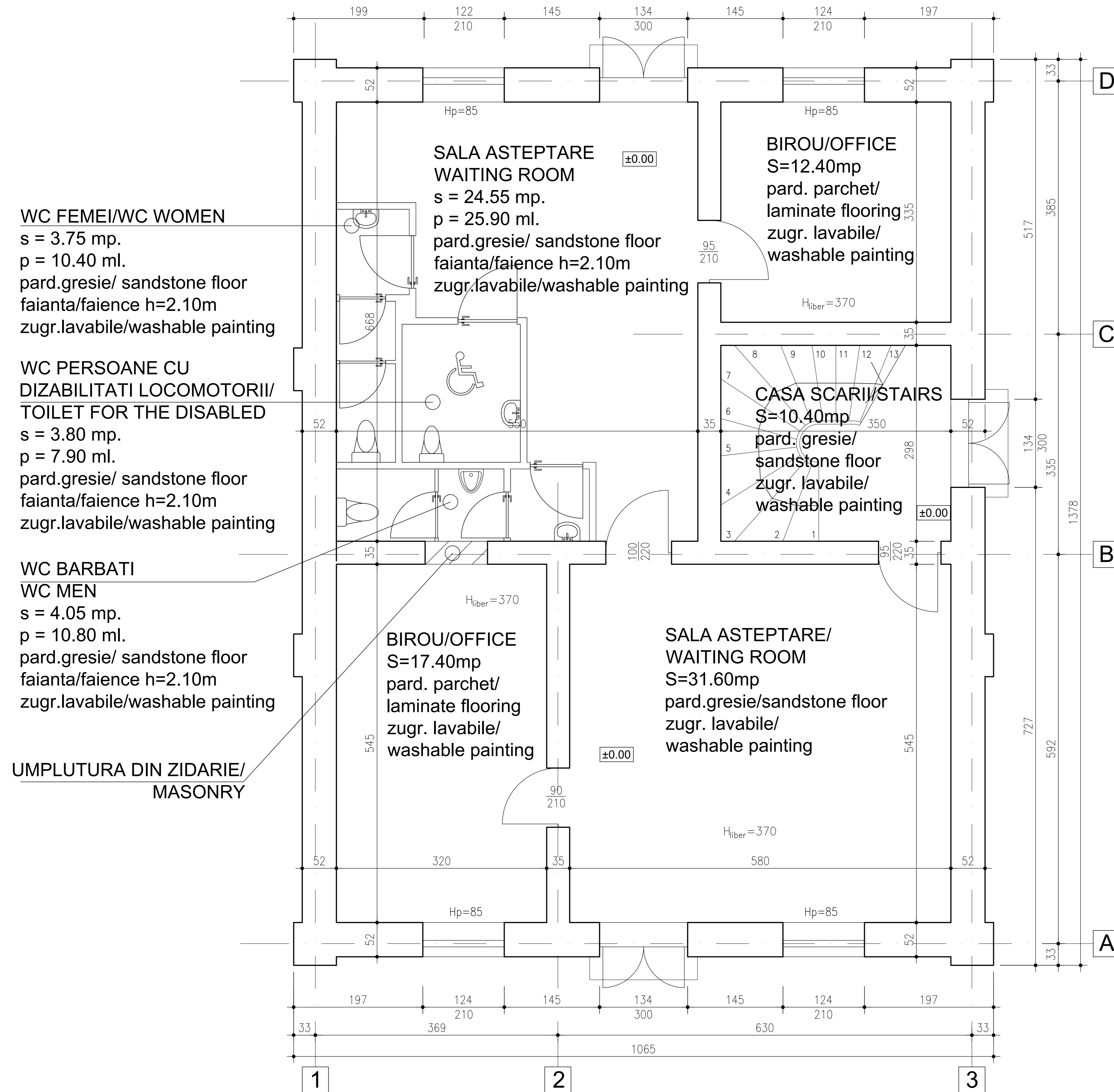


STATIA C.F. DOMASNEA CORNEA - CLADIRE DE CALATORI



WC FEMEI/WC WOMEN
s = 3.75 mp.
p = 10.40 ml.
pard.gresie/ sandstone floor
faianta/faience h=2.10m
zugr.lavabile/washable painting

WC PERSOANE CU
DIZABILITATI LOCOMOTORII/
TOILET FOR THE DISABLED
s = 3.80 mp.
p = 7.90 ml.
pard.gresie/ sandstone floor
faianta/faience h=2.10m
zugr.lavabile/washable painting

WC BARBATI
WC MEN
s = 4.05 mp.
p = 10.80 ml.
pard.gresie/ sandstone floor
faianta/faience h=2.10m
zugr.lavabile/washable painting

UMPLUTURA DIN ZIDARIE/
MASONRY

NOTE

- The wearing layer of indoor floors and outdoor pavements will be made of easy to maintain, wear-resistant non-slip materials (sandstone, wall-to-wall carpet, parquet, anti-static linoleum floor);
- The facades of buildings will be thermally insulated using wear-resistant materials, decorative plastering and washable painting;
- The walls for indoor circulations will be coated with panels made of wear-resistant materials easy to maintain;
- All spaces are provided with suspended ceilings made of gypsum-board, mineral fiber or aluminum.

NOTA

- stratul de uzura al pardosellilor interioare si al pavajelor exterioare va fi realizat din materiale rezistente la uzura, antiderapante si usor de intretinut (gresie, mocheta, parchet, linoleum antistatic);
- fatadele cladirilor vor fi termoizolate cu materiale rezistente la uzura, cu tencuieli decorative si vopsitorii lavabile;
- peretii circulatiilor interioare vor fi placati cu lambriu din materiale rezistente la uzura si usor de intretinut;
- toate spatiile sunt prevazute cu tavane suspendate din gips- carton, fibre minerale sau aluminiu.

		C.N.C.F. "C.F.R." - S.A.	
CONSULTANT / CONSULTANT			
<i>Faza</i> Phase	<i>Positia</i> Position	<i>Nume</i> Name	<i>Data</i> Date
Aprobat Approved	Manager de Proiect Project Manager	Roberto LIUZZA	05.2020
Verificat Checked	Expert Cheie Key Expert	Dan PATRASCU	05.2020
Intocmit Elaborated	Proiectant Designer	Horia HAS	05.2020
SUBCONSULTANT / SUBCONSULTANT			
Aprobat Approved	Responsabil Subconsultant Subconsultant Responsible		
Intocmit Elaborated	Proiectant Designer		
<i>Studiu de Fezabilitate pentru Reabilitarea liniei feroviare Craiova - Drabeta Turnu Severin - Caransebes, parte a Coridorului Orient/Est Mediteranean - Feasibility Study For The Rehabilitation Of The Railway Line Craiova - Caransebes</i>			<i>Proiect/Project</i> 74 / 2018 <i>Faza/Phase</i> S.F.
Denumire / Title : HALTA C.F. DOMASNEA CORNEA - CLADIRI CALATORI Propunere Plan Parter			
Codificare / Codification System E 2 1 8 S S F 5 2 A B C C 1 0 1 0 0 1 0			
<i>Istoricul revizilor / Revision History</i>			
Rev.	Data/Date	Descriere Modificare / Modification description	
1			
2			
3			
4			
Responsabilitatea privind această publicație revine integral autorului. Uniunea Europeană nu este responsabilă pentru modul în care sunt utilizate informațiile publicate. The contents of this publication are the sole responsibility of (name of the implementing partner) and do not necessarily reflect the opinion of the European Union.			