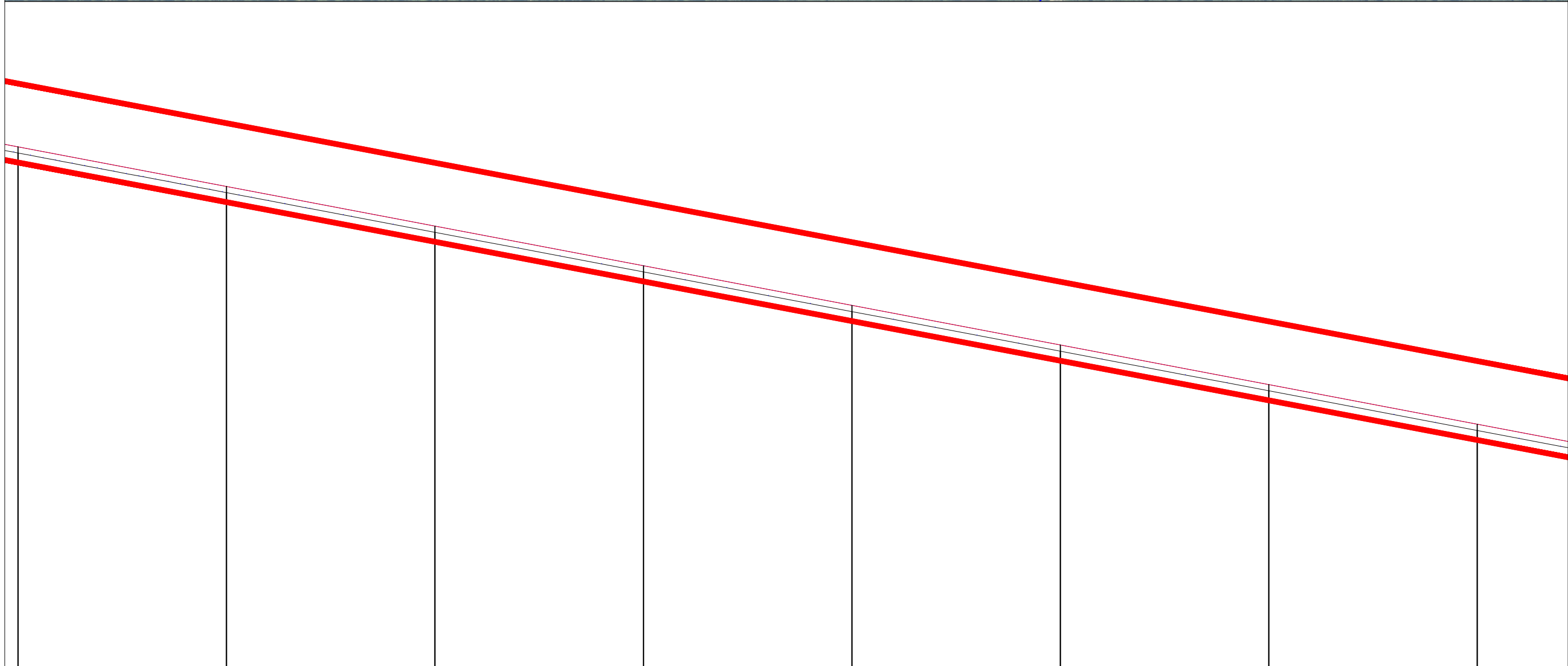
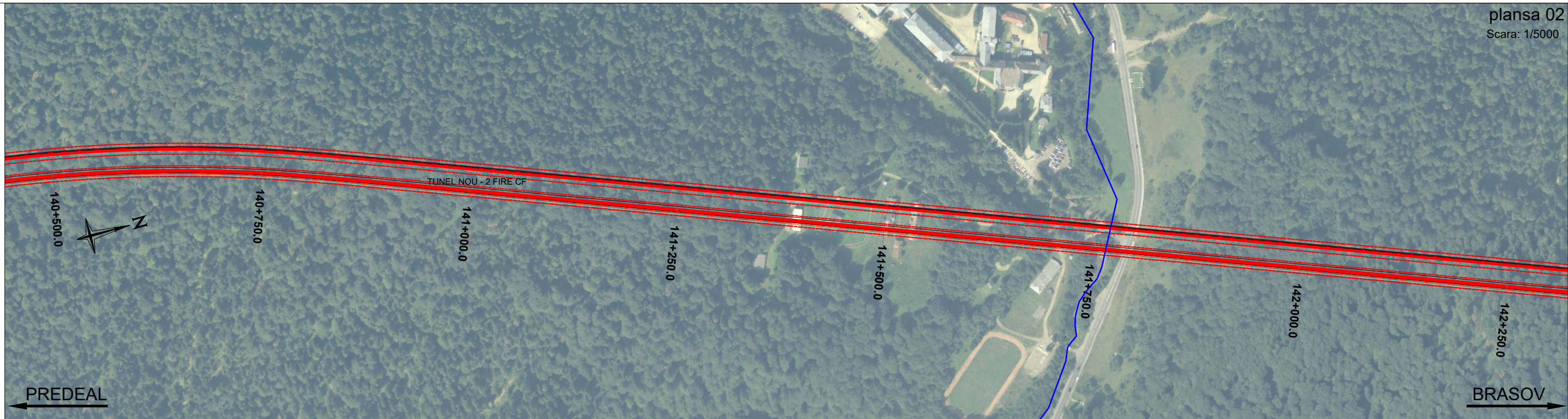
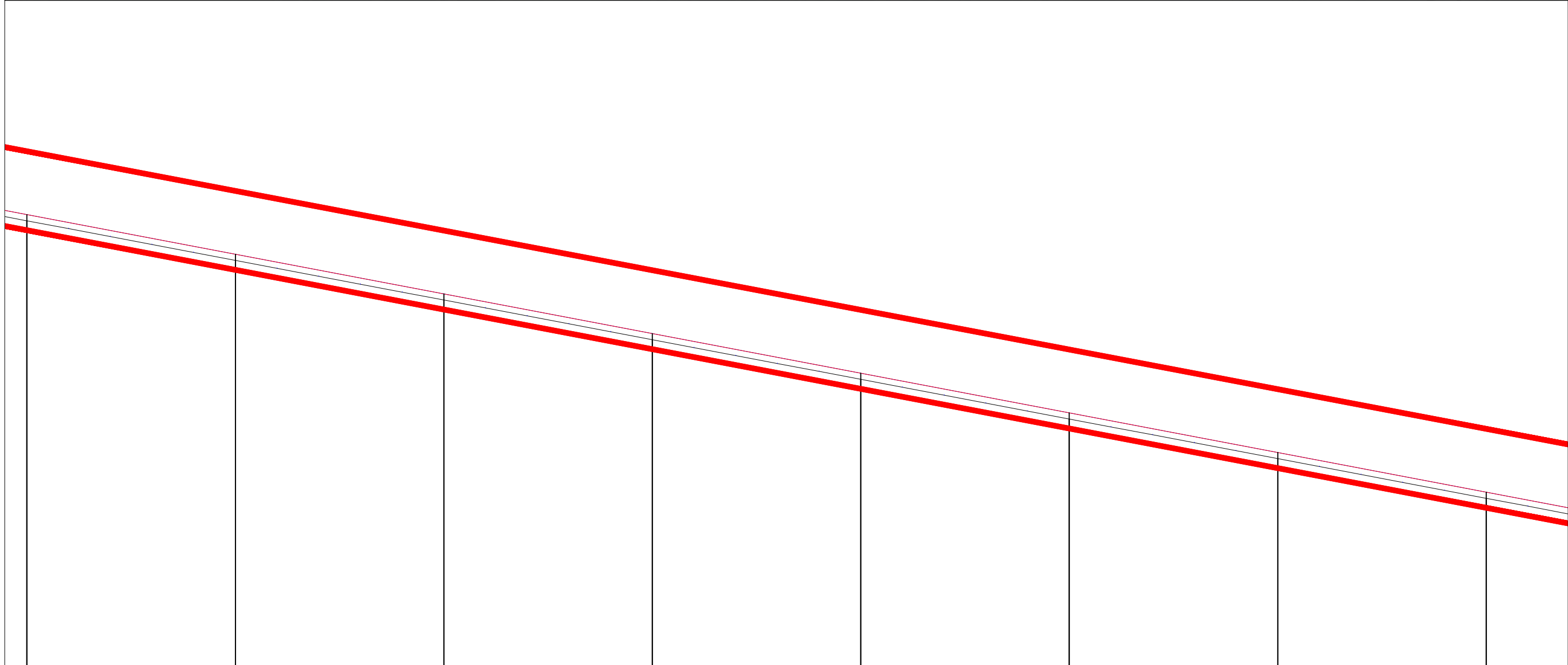
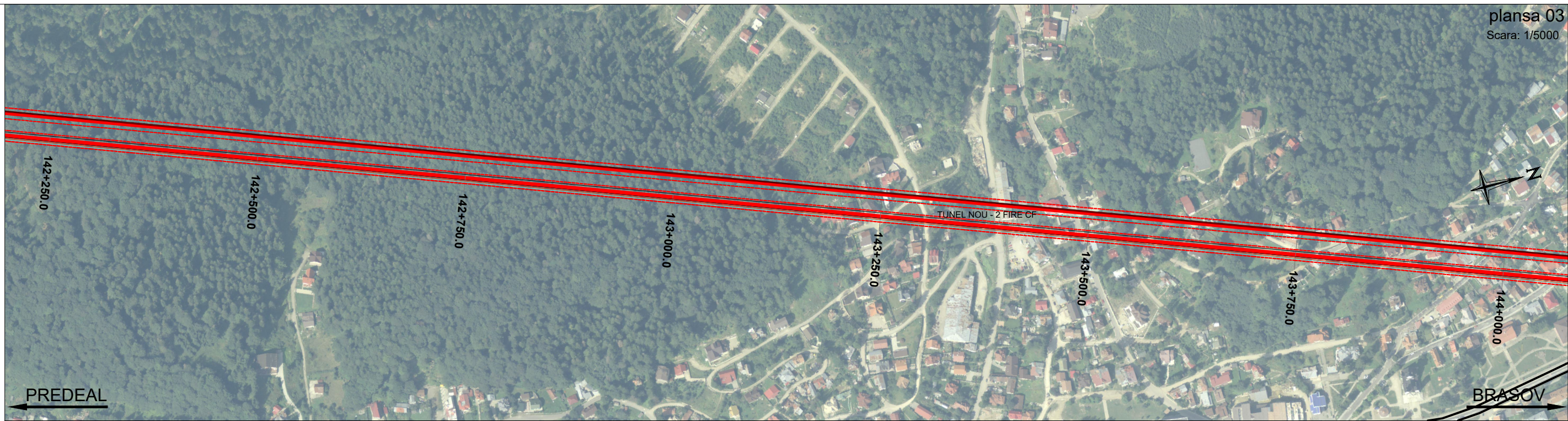


OPTIUNEA 2
SCENARIUL 3
Aliniament : 2A
Scara X : 1/5000
Scara Z : 1/500
Plan Comp : 925.00m



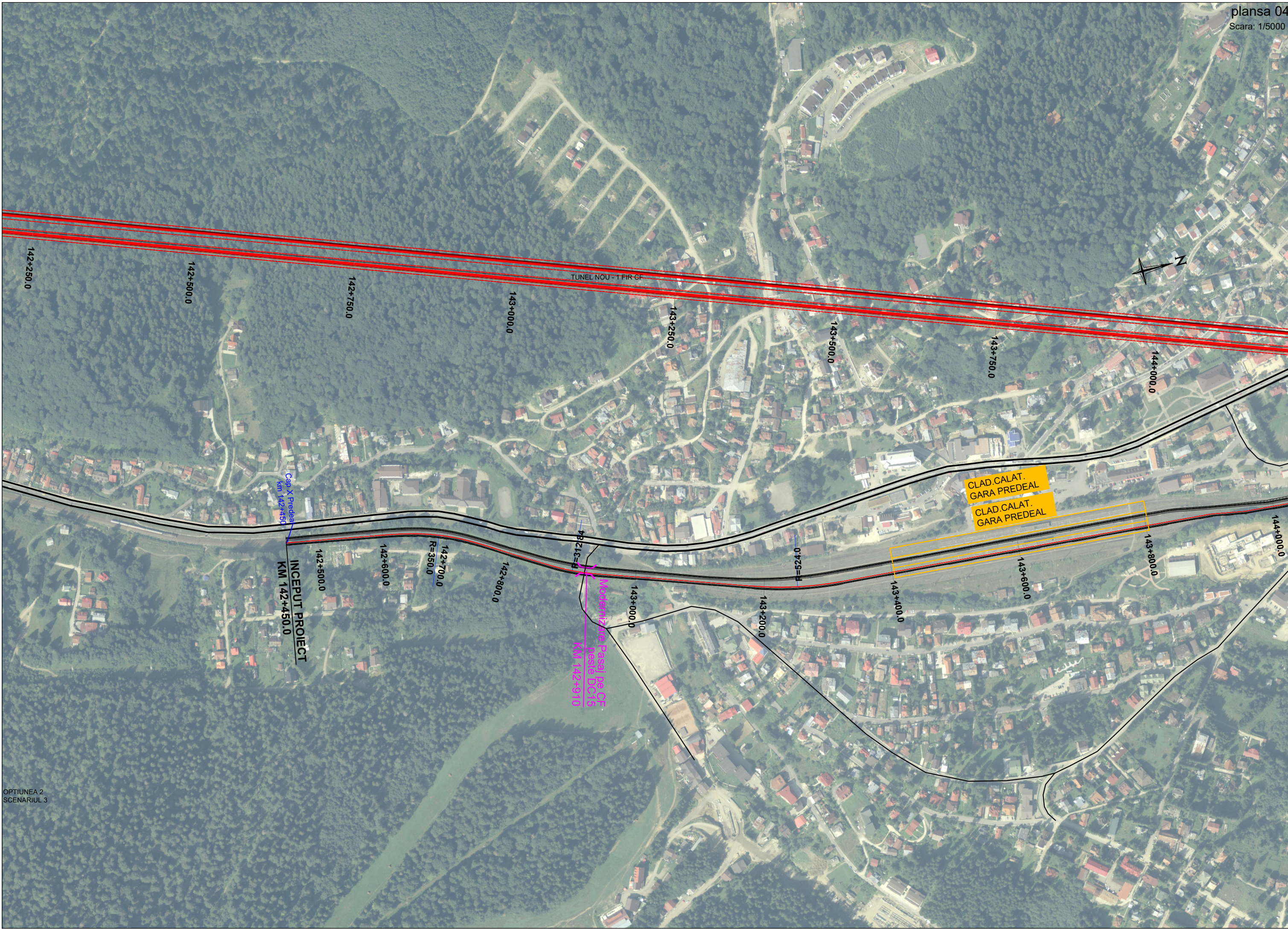
OPTIUNEA 2
SCENARIUL 3
Aliniament : 2A
Scara X : 1/5000
Scara Z : 1/500
Plan Comp : 900.00m

Cote nivel superior sina	83.230	83.230	83.230	83.230	83.230	83.230	83.230	83.230	83.230
Cote teren (N.T.) m	83.111	83.111	83.111	83.111	83.111	83.111	83.111	83.111	83.111
Cote platforma (NP) m	83.196	83.196	83.196	83.196	83.196	83.196	83.196	83.196	83.196
Pozitie kilometrica	140+500	140+750	141+000	141+250	141+500	141+750	142+000	142+250	
Distanța între picheti m	250.00	250.00	250.00	250.00	250.00	250.00	250.00	250.00	250.00
Aliniamente și Curbe m	<p style="text-align: center;">L = 160.00m A = 530.00m</p>								



OPTIUNEA 2
SCENARIUL 3
Aliniament : 2A
Scara X : 1/5000
Scara Z : 1/500
Plan Comp : 875.00m

Cote nivel superior sina	142+250.0	142+500.0	142+750.0	143+000.0	143+250.0	143+500.0	143+750.0	144+000.0
Cote teren (N.T.) m	142.250	142.500	142.750	143.000	143.250	143.500	143.750	144.000
Cote platforma (NP) m	142.250	142.500	142.750	143.000	143.250	143.500	143.750	144.000
Pozitie kilometrica	142+250.0	142+500.0	142+750.0	143+000.0	143+250.0	143+500.0	143+750.0	144+000.0
Distanța între picheti m		250.00	250.00	250.00	250.00	250.00	250.00	250.00
Aliniamente și Curbe m								



TUNEL NOU - 1 FIR CF

CLAD. CALAT.
GARA PREDEAL

CLAD. CALAT.
GARA PREDEAL

INCEPUT PROIECT
KM 142+450.0

Modernizare Pasaj pe CF
peste D.C.15
KM 142+910

Cap X Predeal
KM 142+450

OPTIUNEA 2
SCENARIUL 3

142+250.0

142+500.0

142+750.0

143+000.0

143+250.0

143+500.0

143+750.0

144+000.0

142+500.0

142+600.0

142+700.0
R=350.0

142+800.0

143+000.0

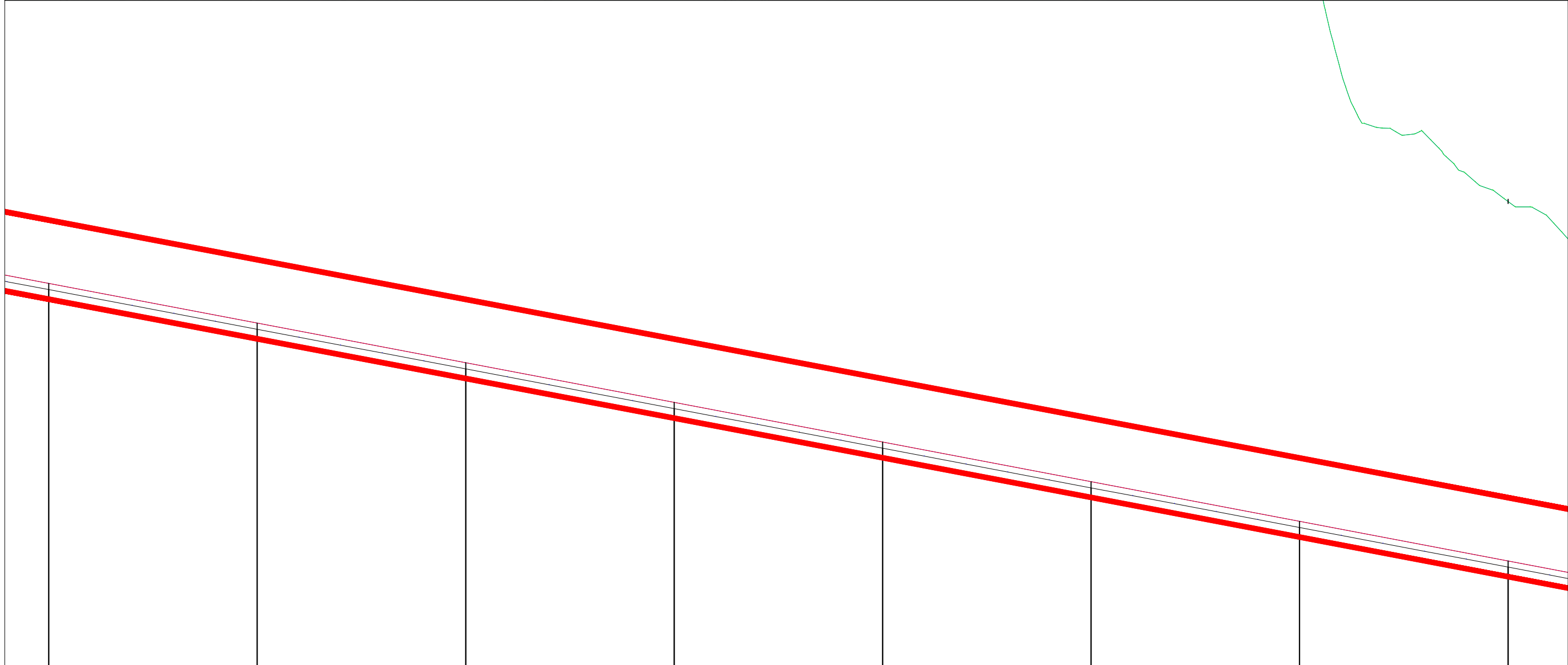
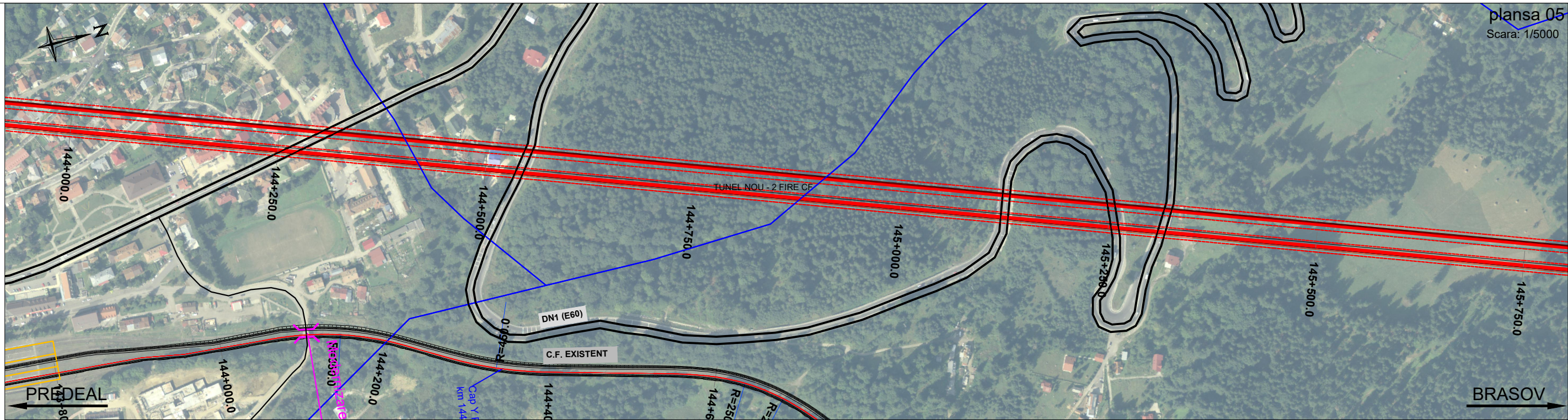
143+200.0

143+400.0

143+600.0

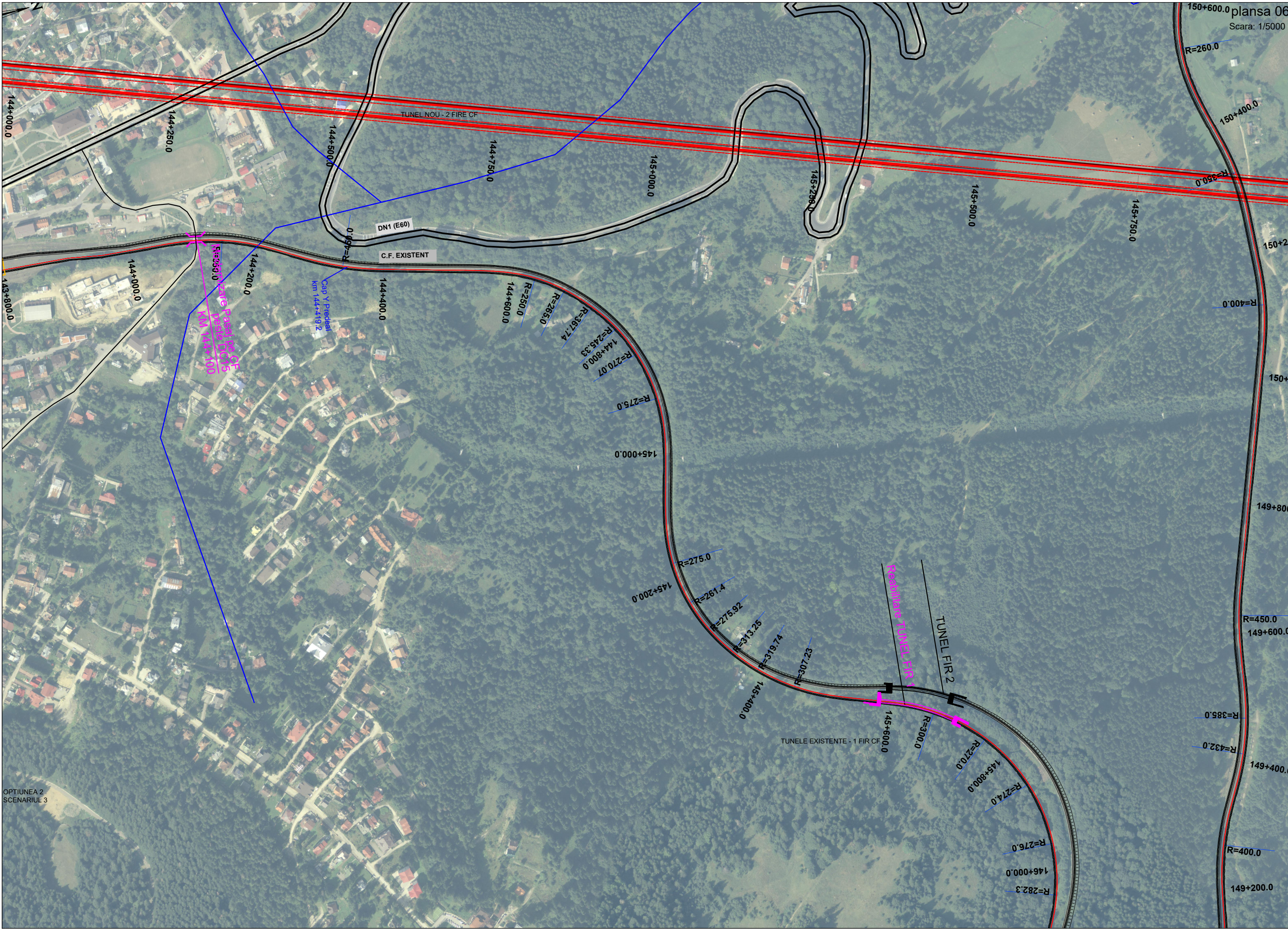
143+800.0

144+000.0

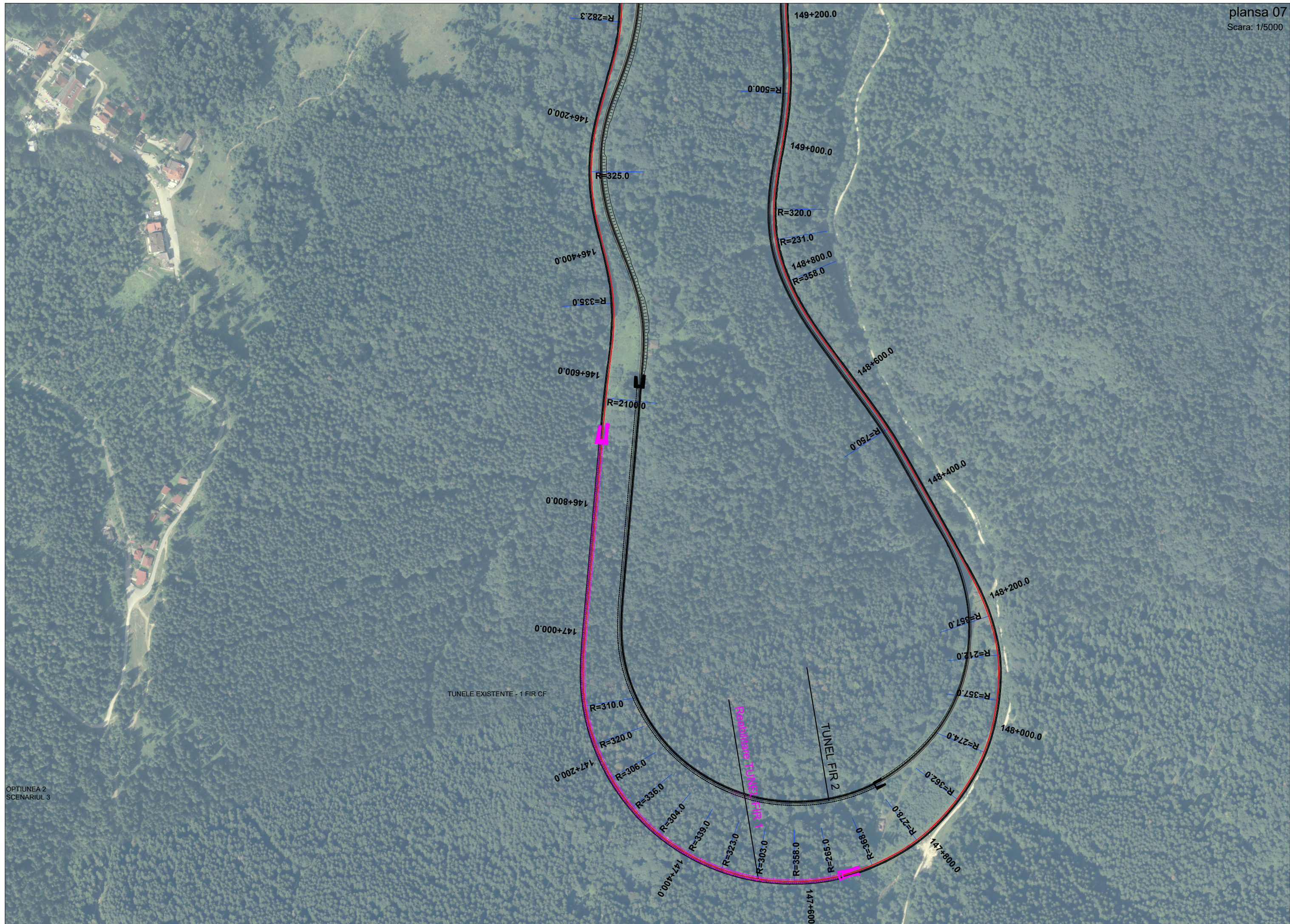


OPTIUNEA 2
SCENARIUL 3
Aliniament : 2A
Scara X : 1/5000
Scara Z : 1/500
Plan Comp : 850.00m

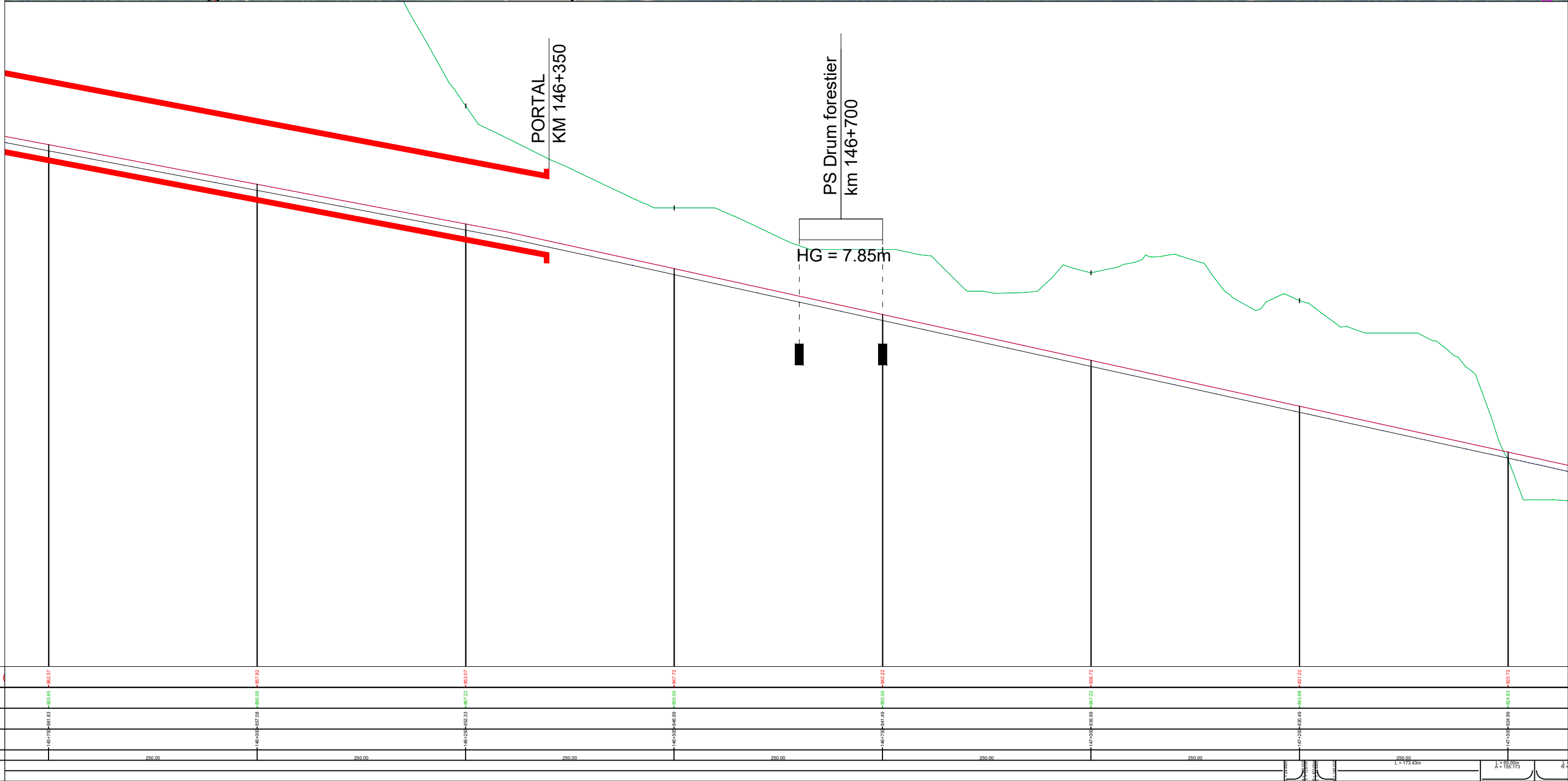
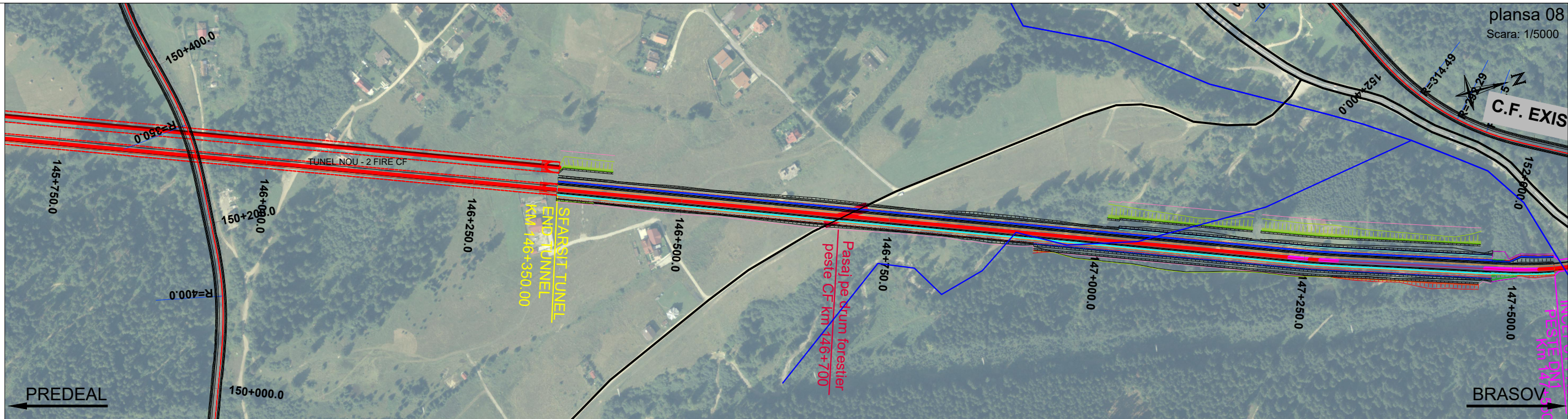
Cote nivel superior sina	144+000.0	144+250.0	144+500.0	144+750.0	145+000.0	145+250.0	145+500.0	145+750.0
Cote teren (N.T.) m	80.298+00+191	83.008+00+210	85.208+00+230	87.208+00+250	89.208+00+270	91.208+00+290	93.208+00+310	95.208+00+330
Cote platforma (NP) m	80.298+00+191	83.008+00+210	85.208+00+230	87.208+00+250	89.208+00+270	91.208+00+290	93.208+00+310	95.208+00+330
Pozitie kilometrica	144+000.0	144+250.0	144+500.0	144+750.0	145+000.0	145+250.0	145+500.0	145+750.0
Distanța între picheti m	L = 6333.77m							
Aliniamente si Curbe m								



OPTIUNEA 2
SCENARIUL 3

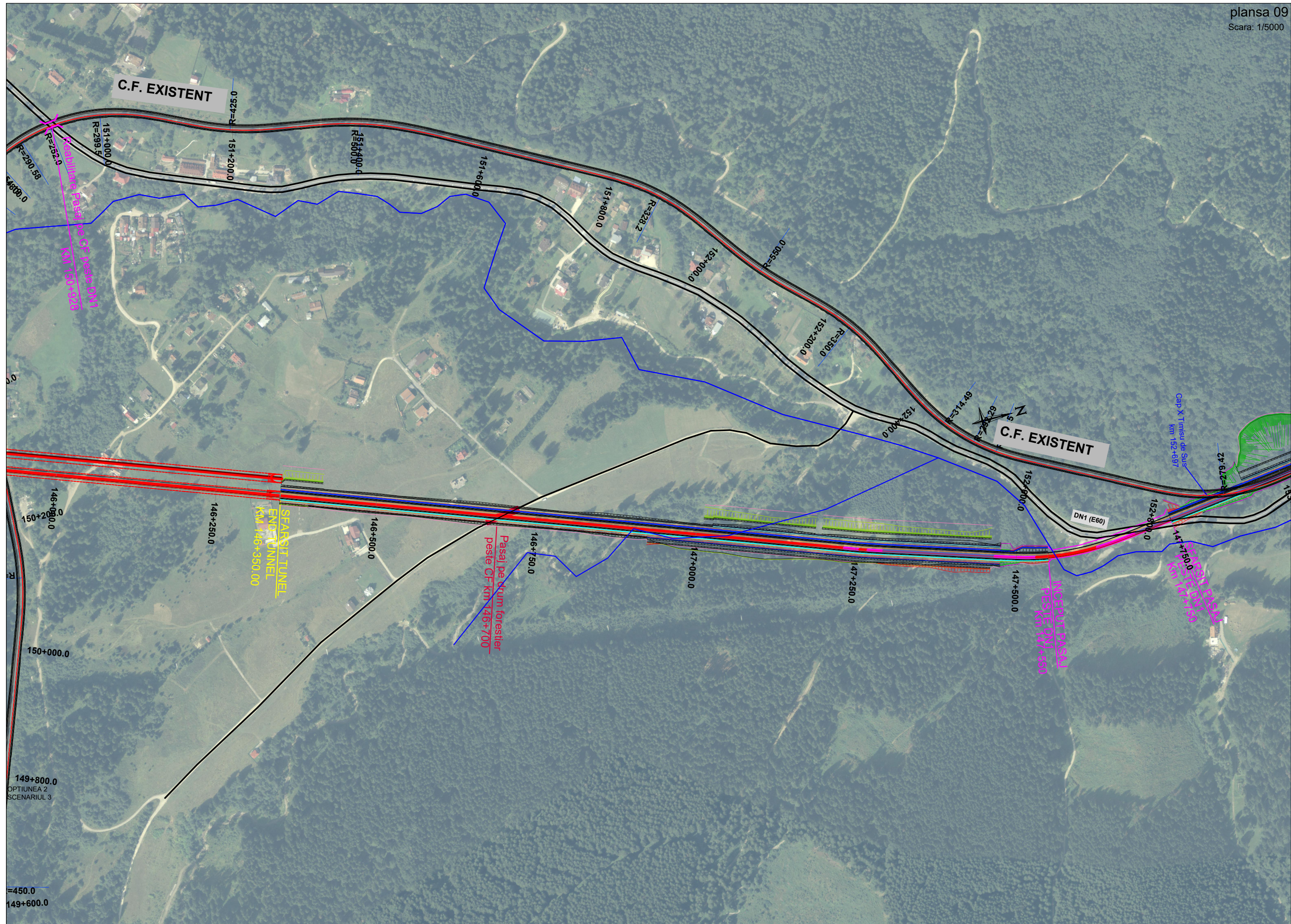


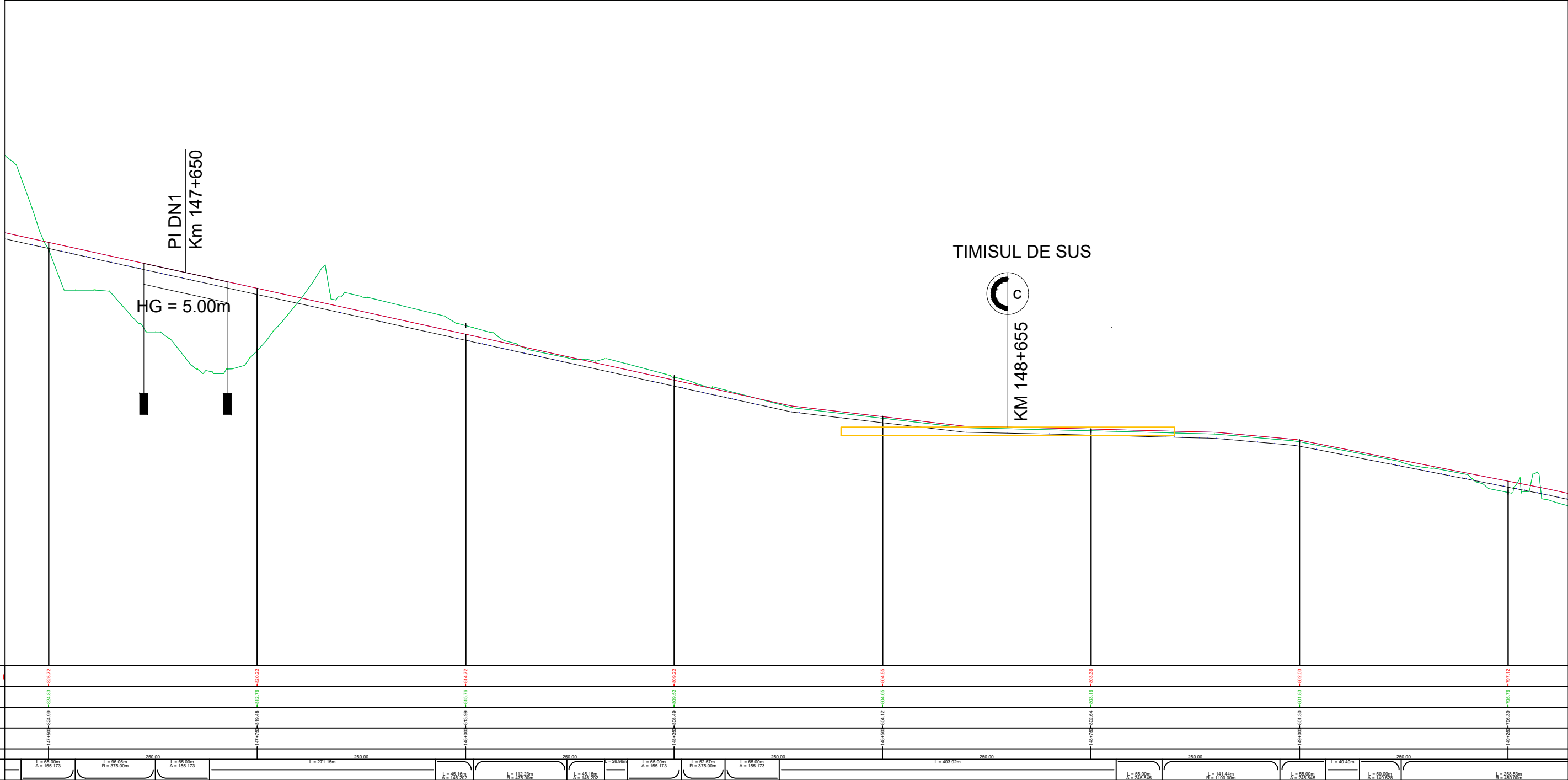
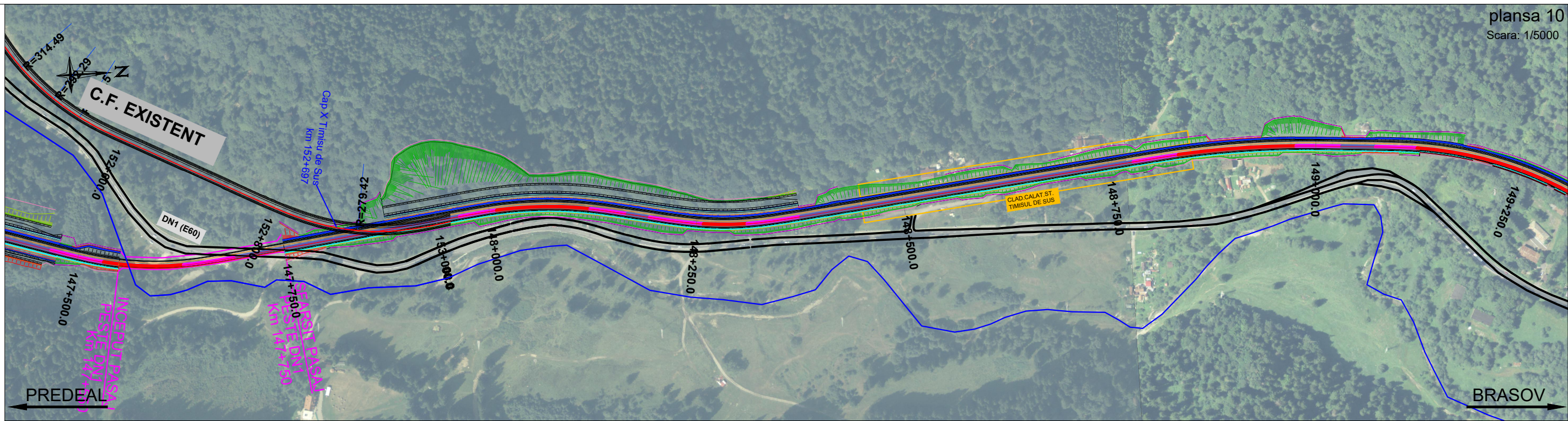
OPTIUNEA 2
SCENARIUL 3



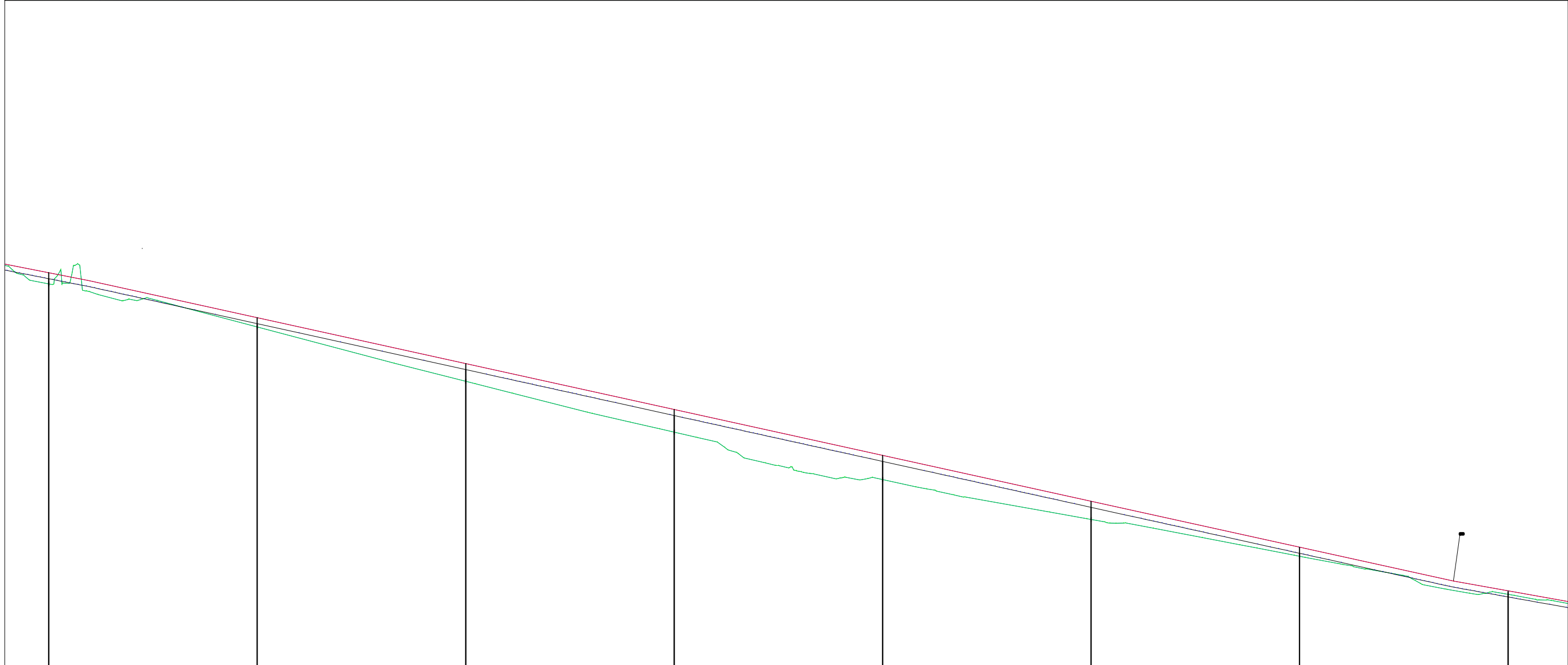
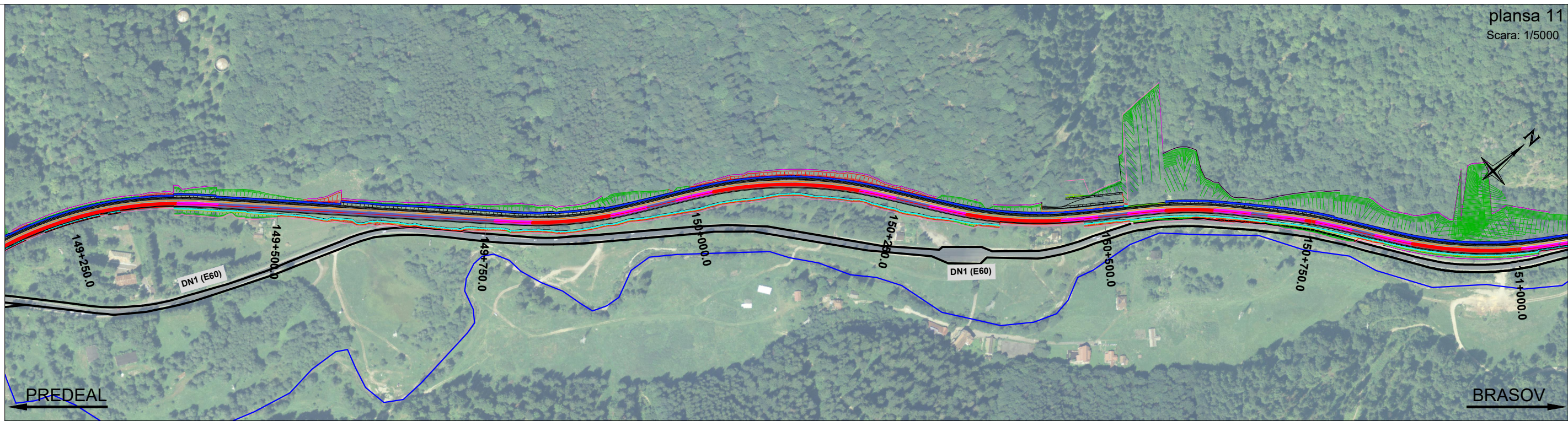
OPTIUNEA 2
SCENARIUL 3
Aliniament : 2A
Scara X : 1/5000
Scara Z : 1/500
Plan Comp : 800.00m

Cote nivel superior sina	145+750.0	146+000.0	146+250.0	146+500.0	146+750.0	147+000.0	147+250.0	147+500.0
Cote teren (N.T.) m	662.71	667.82	663.07	667.72	662.22	665.00	667.22	665.71
Cote platforma (NP) m	662.71	667.82	663.07	667.72	662.22	665.00	667.22	665.71
Pozitie kilometrica	145+750.00	146+000.00	146+250.00	146+500.00	146+750.00	147+000.00	147+250.00	147+500.00
Distanța între picheti m	250.00	250.00	250.00	250.00	250.00	250.00	250.00	250.00
Aliniamente si Curbe m								



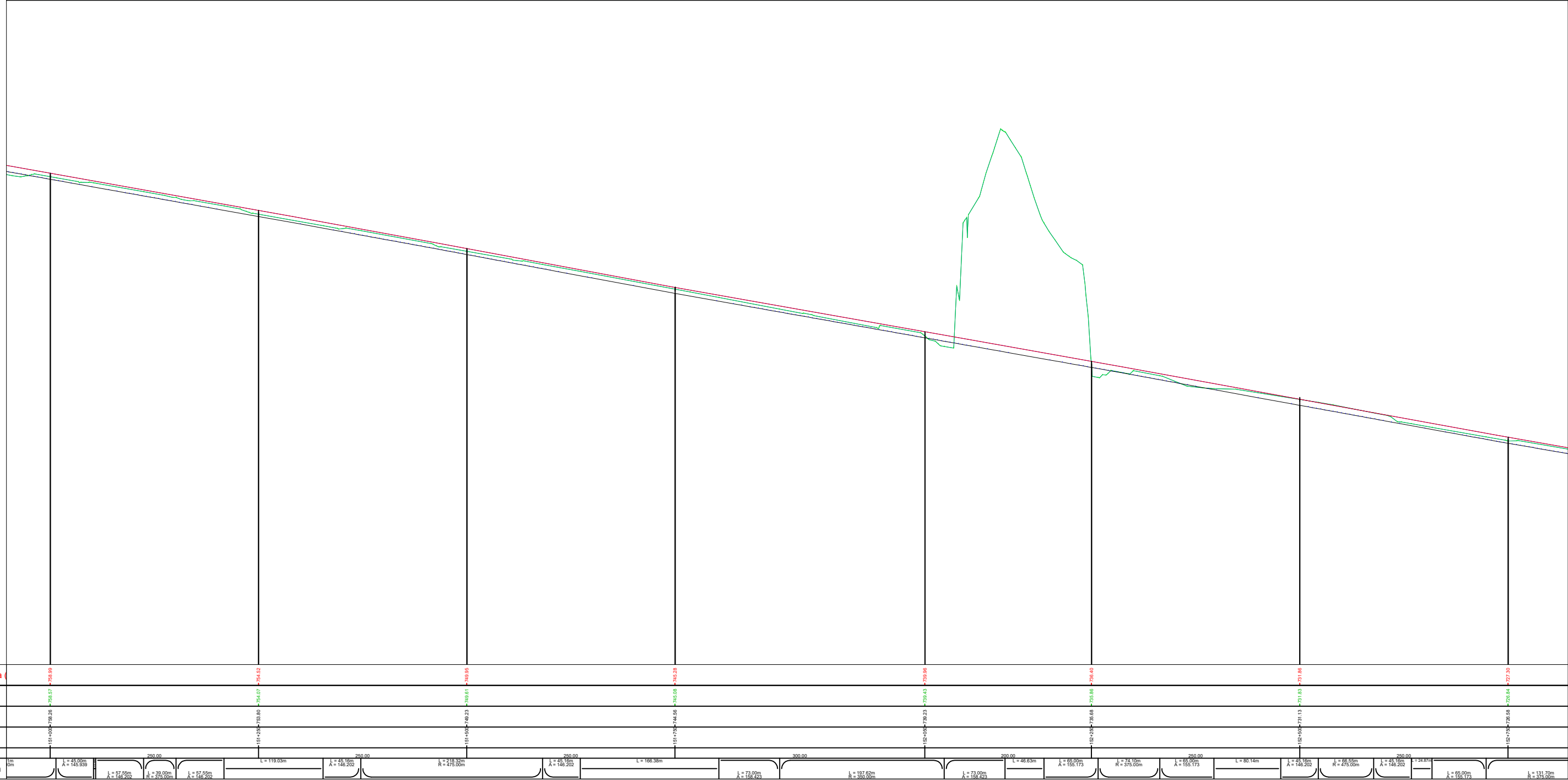
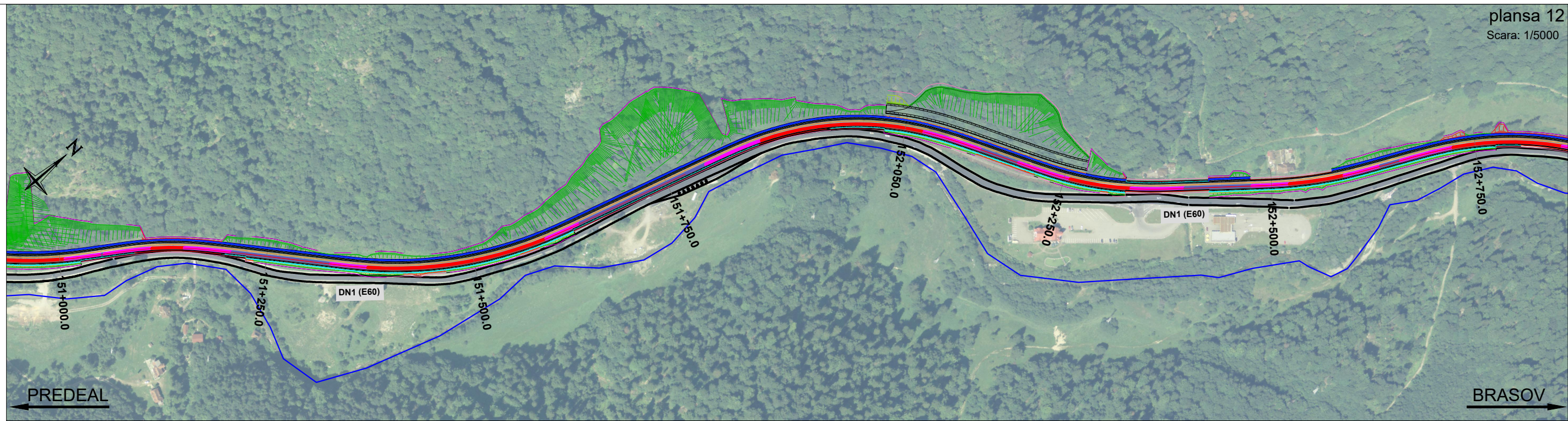


OPTIUNEA 2
SCENARIUL 3
Aliniament : 2A
Scara X : 1/5000
Scara Z : 1/500
Plan Comp : 775.00m

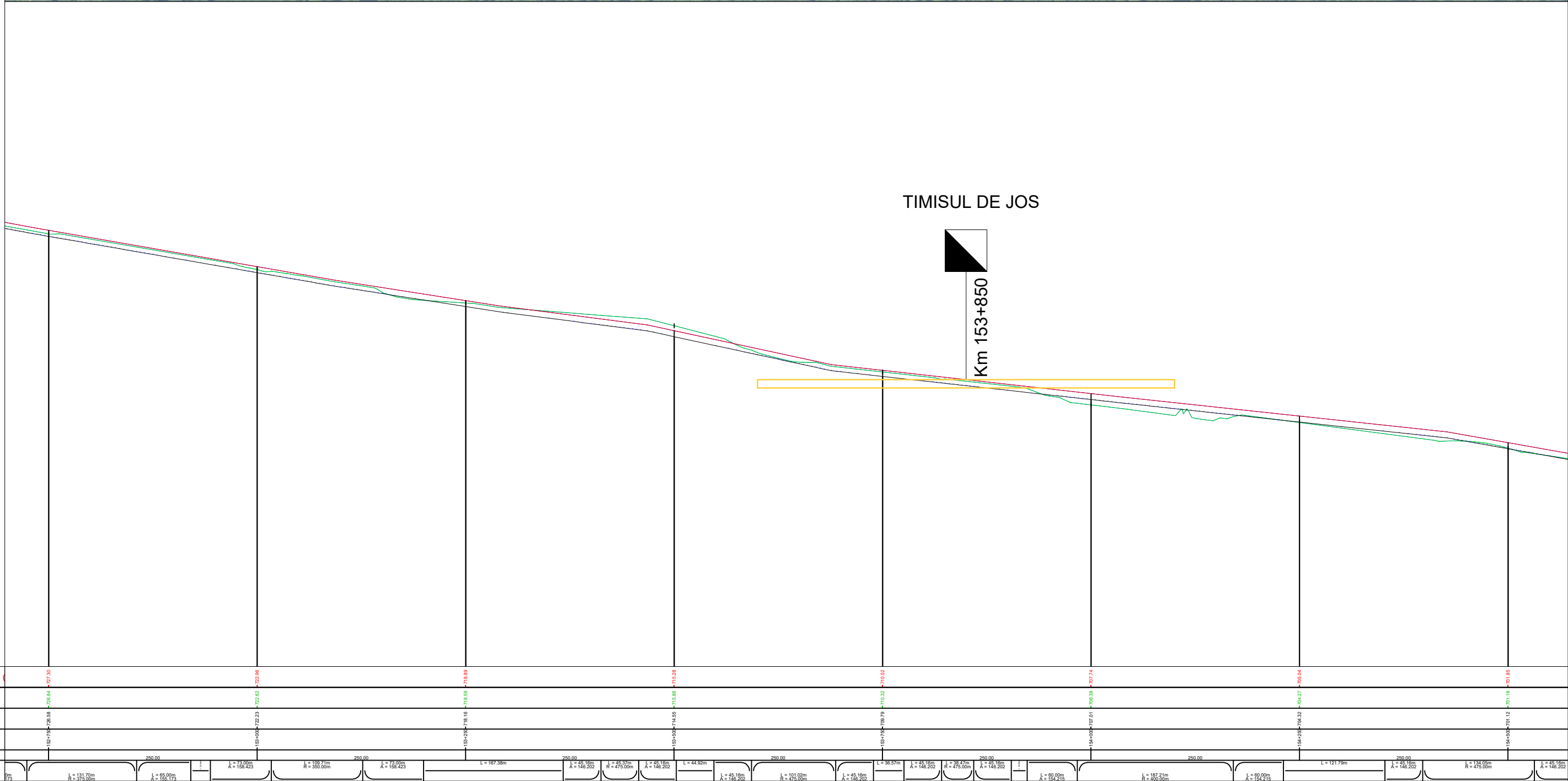
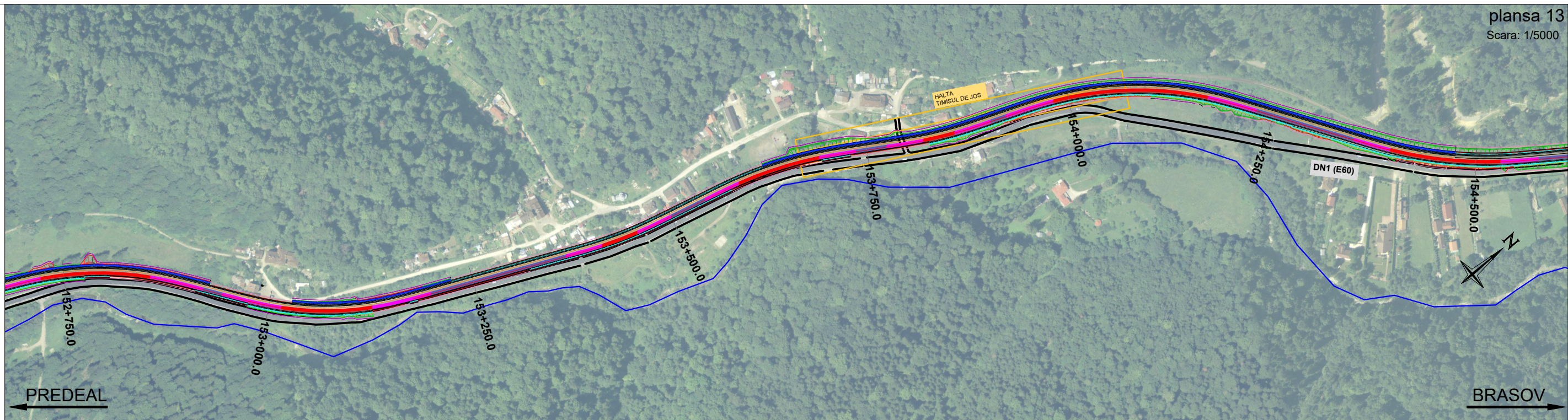


OPTIUNEA 2
SCENARIUL 3
Aliniament : 2A
Scara X : 1/5000
Scara Z : 1/500
Plan Comp : 750.00m

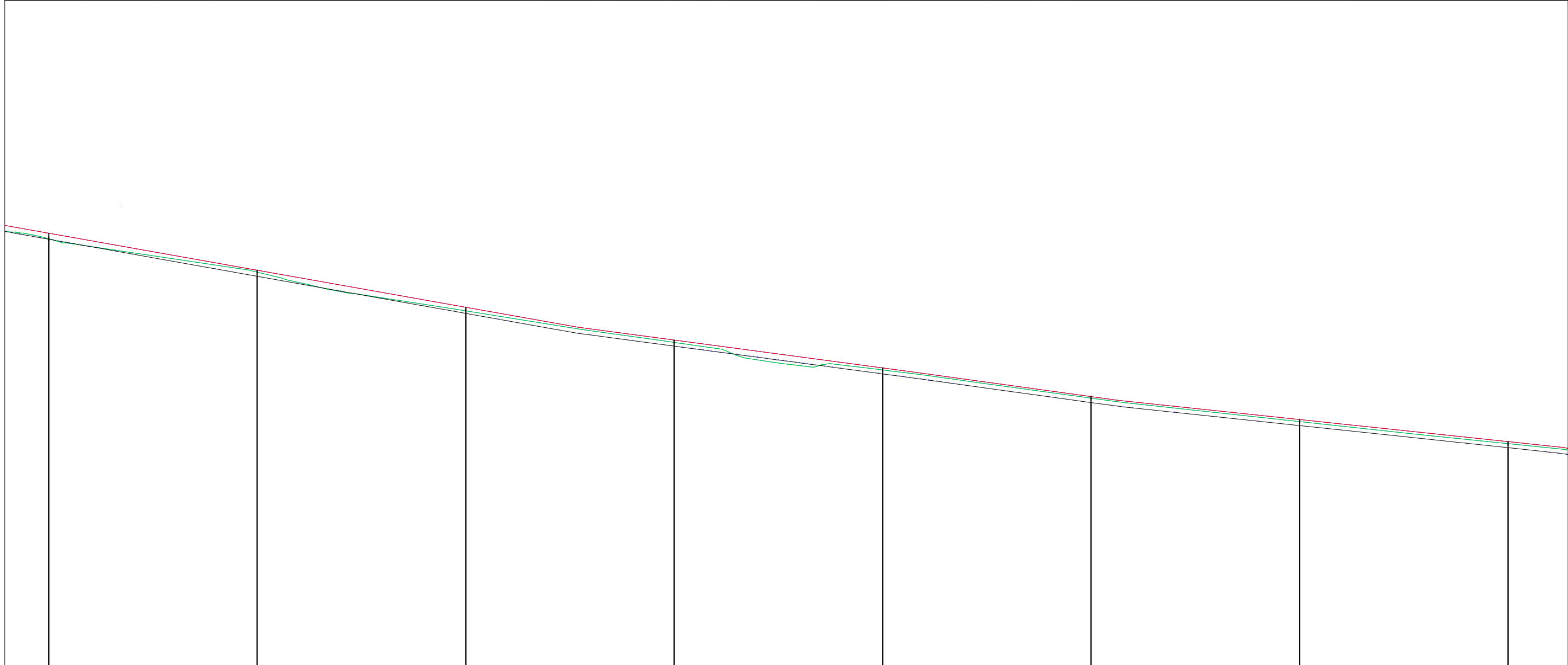
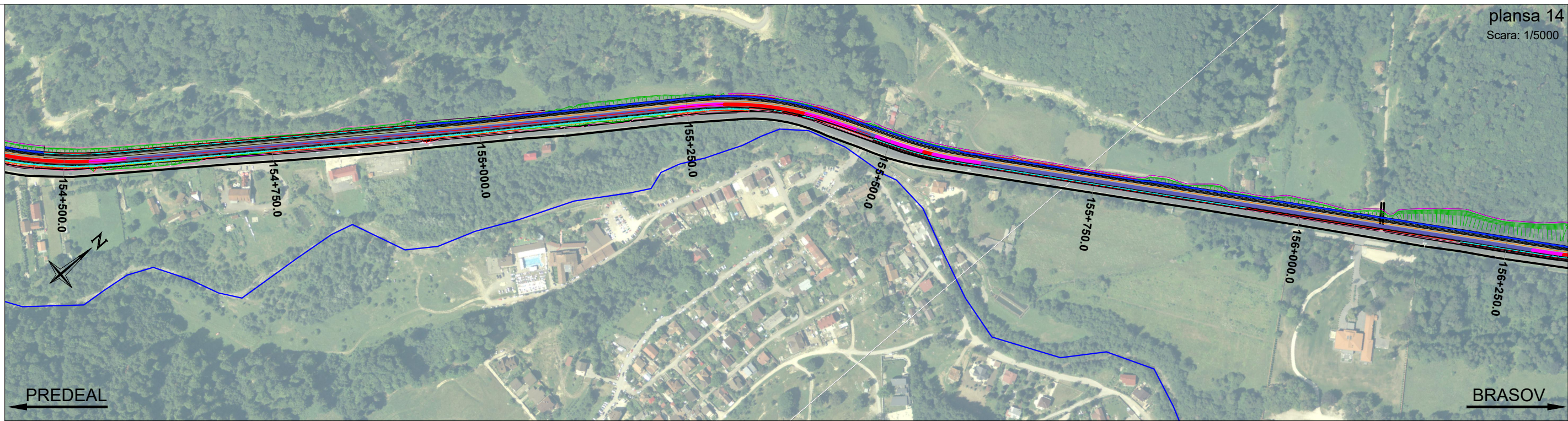
Cote nivel superior sina	781.14	781.14	780.23	780.73	782.23	780.72	784.22	780.99	786.22	780.99
Cote teren (N.T.) m	785.70	786.06	786.09	778.01	773.33	775.57	781.14	781.57	786.99	785.57
Cote platforma (NP) m	786.39	787.00	786.50	786.00	774.50	780.49	780.49	780.26	780.26	780.26
Pozitie kilometrica	149+250.00	149+500.00	149+750.00	150+000.00	150+250.00	150+500.00	150+750.00	151+000.00		
Distanta intre picheti m	250.00	250.00	250.00	250.00	250.00	250.00	250.00	250.00	250.00	250.00
Aliniamente si Curbe m	L = 330.91m R = 450.00m		L = 45.00m A = 145.938 R = 475.00m		L = 45.00m A = 145.938 R = 475.00m		L = 45.00m A = 145.938 R = 475.00m		L = 45.00m A = 145.938 R = 475.00m	



OPTIUNEA 2
SCENARIUL 3
Aliniament : 2A
Scara X : 1/5000
Scara Z : 1/500
Plan Comp : 700.00m

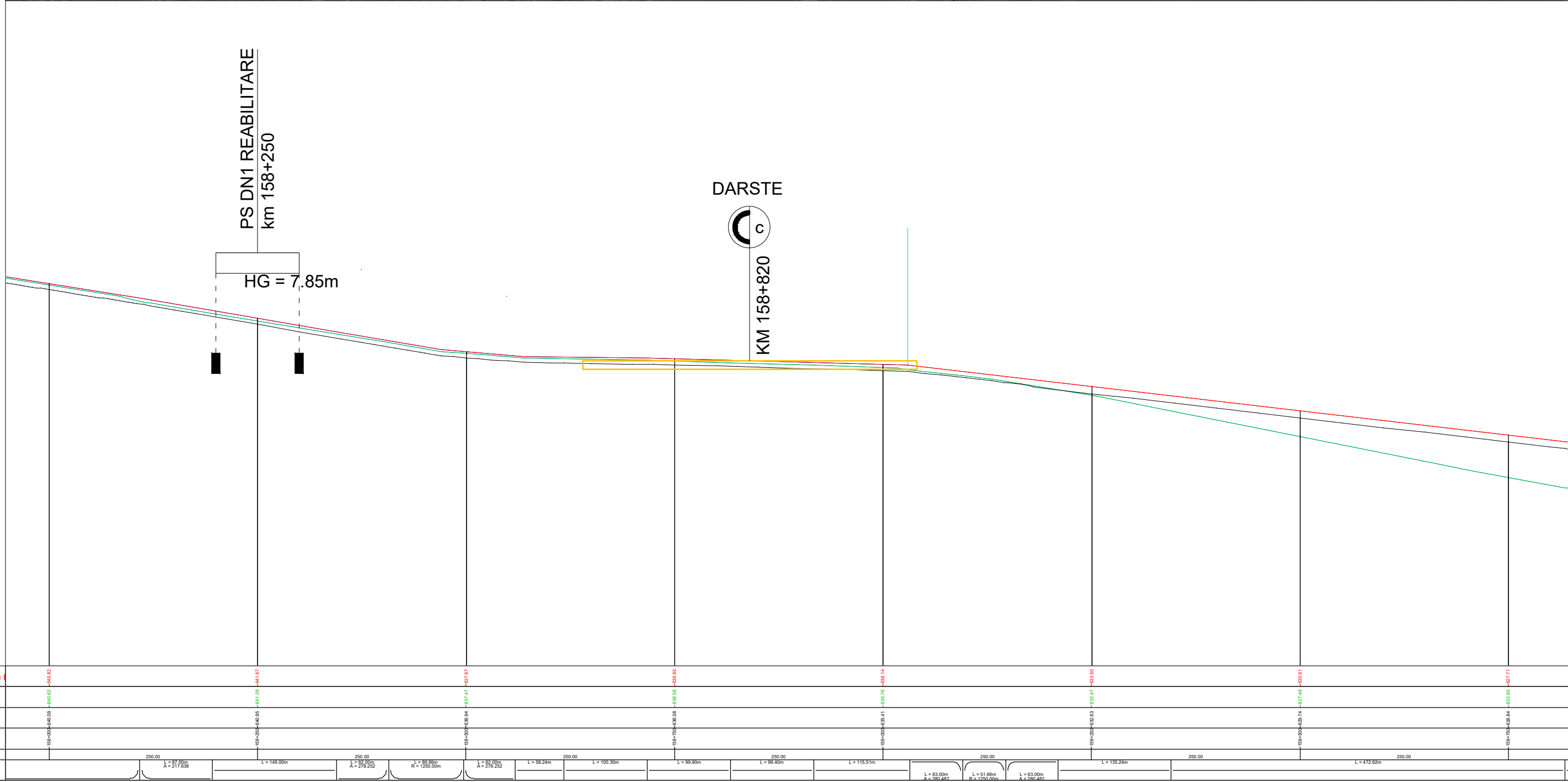
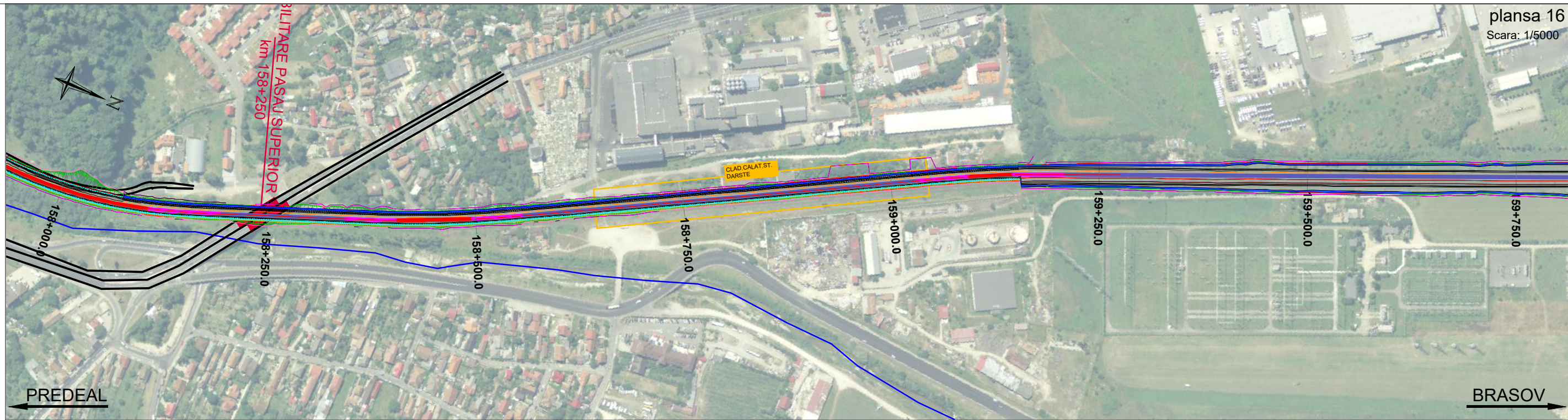


OPTIUNEA 2
SCENARIUL 3
Aliniament : 2A
Scara X : 1/5000
Scara Z : 1/500
Plan Comp : 675.00m

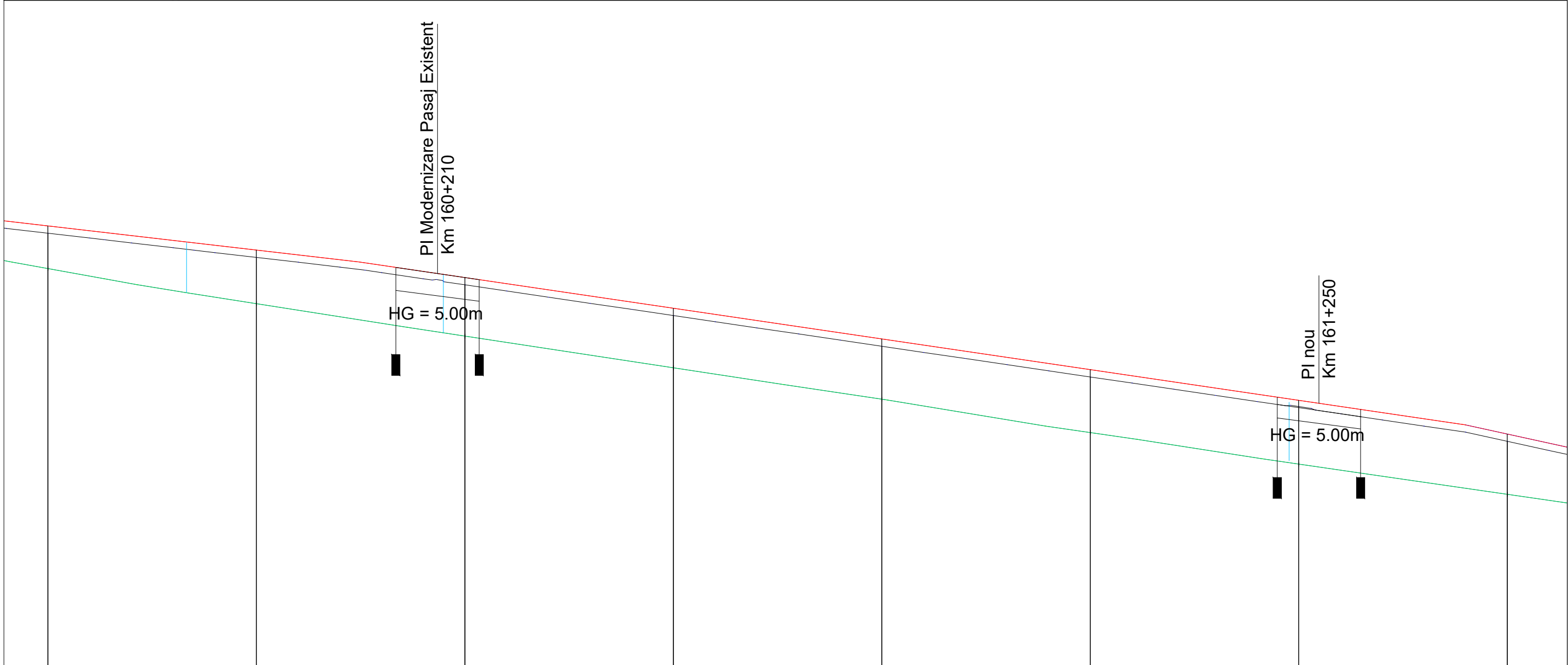
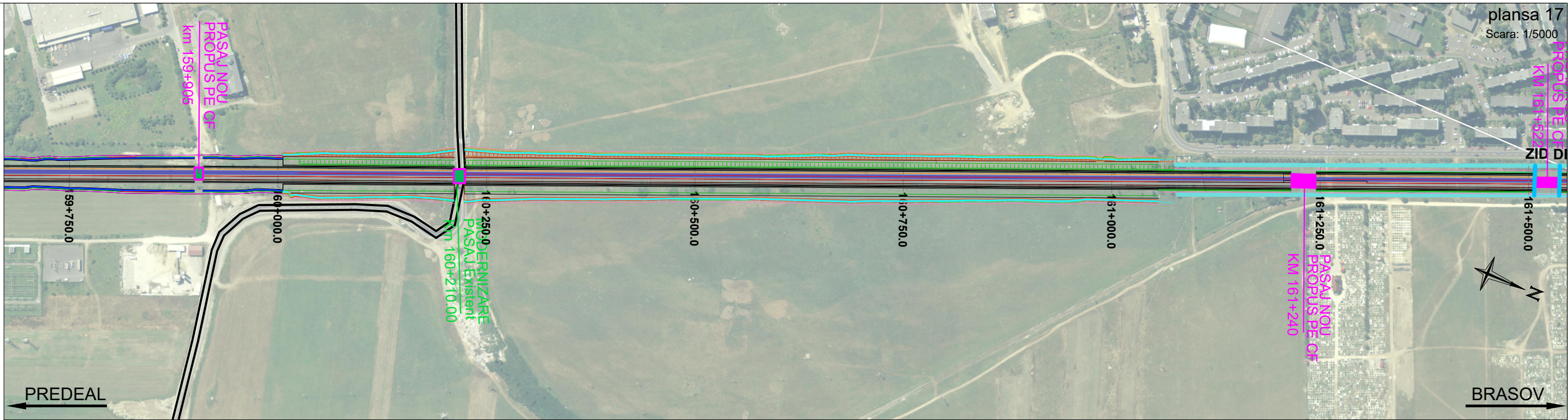


OPTIUNEA 2
SCENARIUL 3
Aliniament : 2A
Scara X : 1/5000
Scara Z : 1/500
Plan Comp : 650.00m

Cote nivel superior sina	154+500.0	154+750.0	155+000.0	155+250.0	155+500.0	155+750.0	156+000.0	156+250.0	
Cote teren (N.T.) m	811.10	811.00	807.50	807.50	807.50	807.50	807.50	807.50	
Cote platforma (NP) m	210.00	210.00	210.00	210.00	210.00	210.00	210.00	210.00	
Pozitie kilometrica	154+500.0	154+750.0	155+000.0	155+250.0	155+500.0	155+750.0	156+000.0	156+250.0	
Distanta intre picheti m	250.00	250.00	250.00	250.00	250.00	250.00	250.00	250.00	
Aliniamente si Curbe m	L = 134.00m R = 475.00m	L = 45.16m A = 146.202	L = 408.64m	L = 246.94m	L = 65.00m A = 156.173	L = 98.00m R = 375.00m	L = 85.00m A = 156.173	L = 60.00m A = 154.215	L = 60.00m A = 154.215

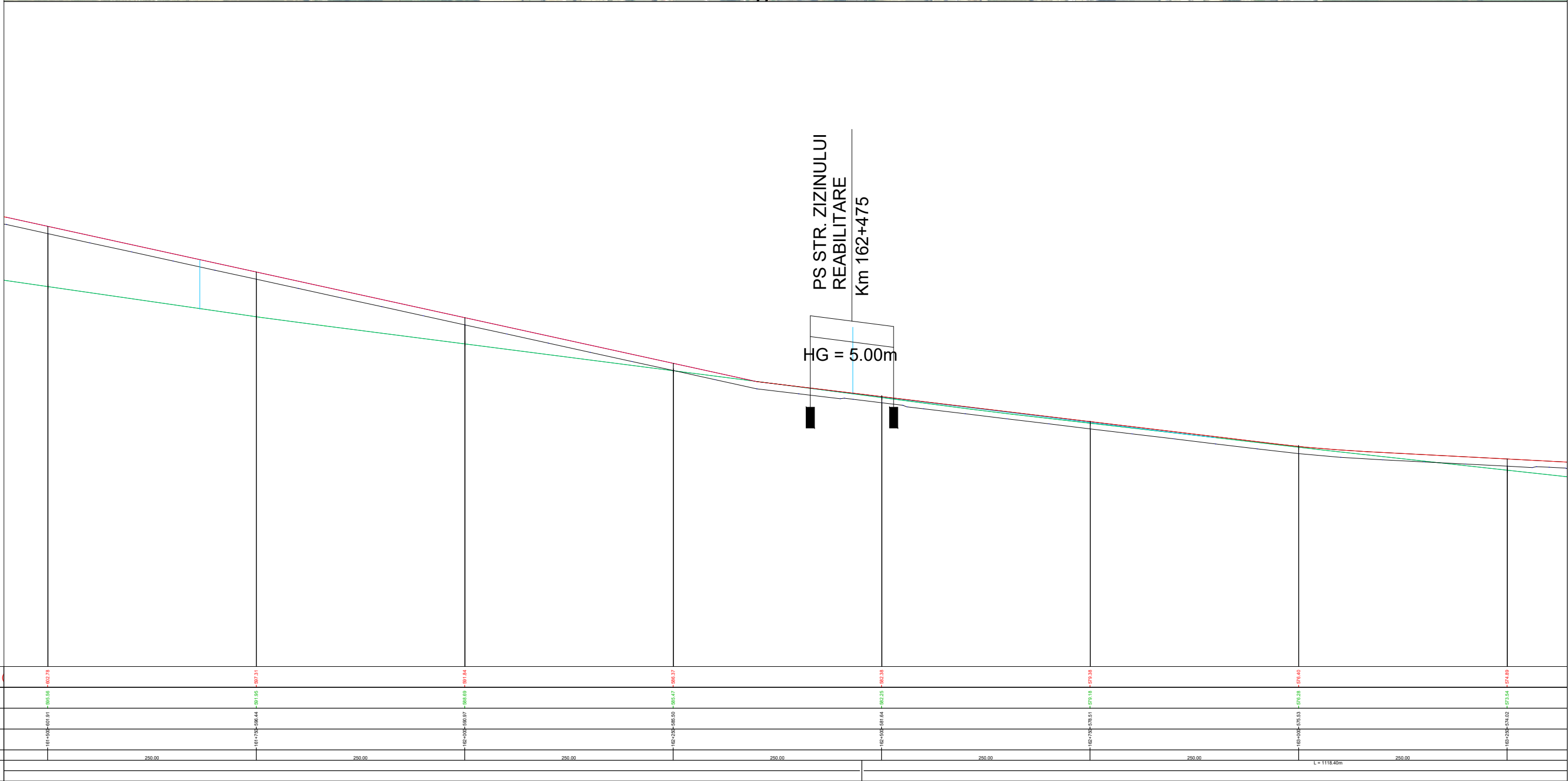
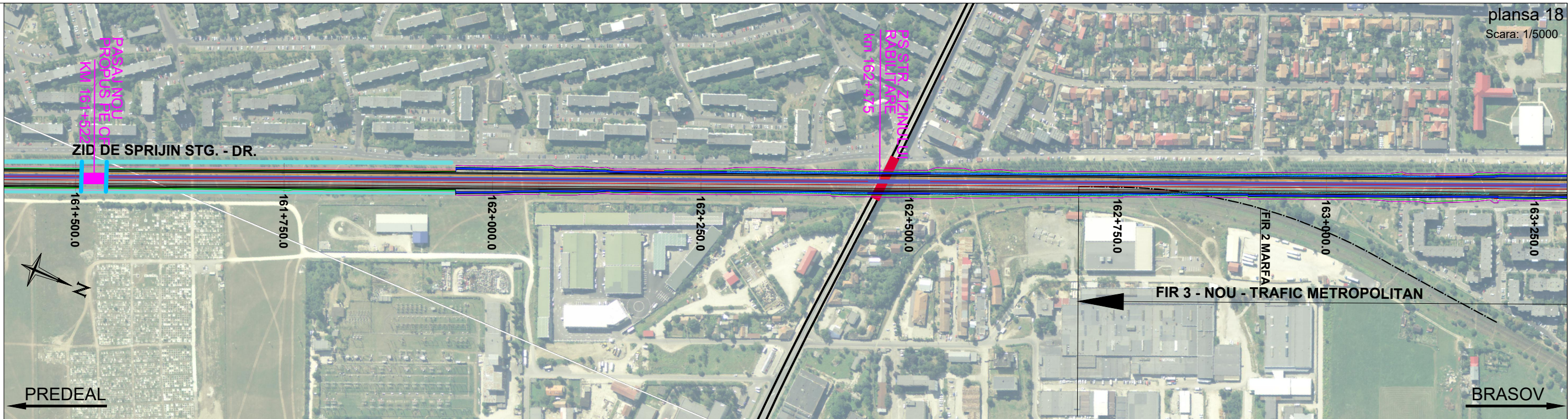


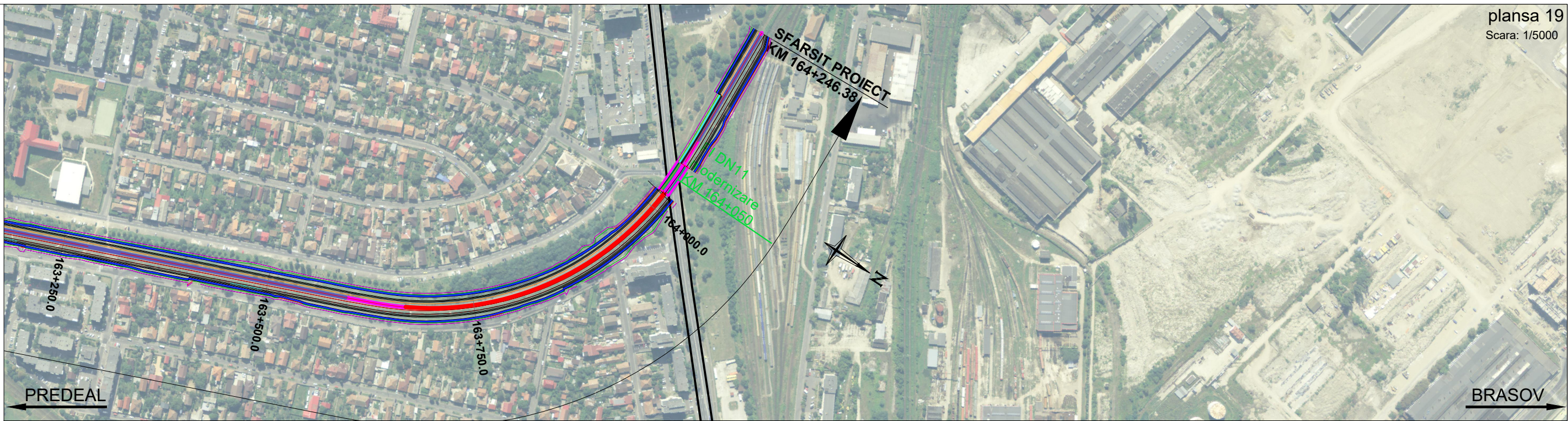
OPTIUNEA 2
SCENARIUL 3
Aliniament : 2A
Scara X : 1/5000
Scara Z : 1/500
Plan Comp : 600.00m



OPTIUNEA 2
 SCENARIUL 3
 Aliniament : 2A
 Scara X : 1/5000
 Scara Z : 1/500
 Plan Comp : 575.00m

Cote nivel superior sina	160.71	160.82	160.51	160.88	161.17	160.46	160.85	160.74
Cote teren (N.T.) m	162.60	161.40	161.51	161.07	160.86	162.91	161.81	160.56
Cote platforma (NP) m	161.75	162.85	162.66	162.98	163.30	162.03	162.90	161.10
Pozitie kilometrica	59+750	100	160+200	160+500	161+000	161+500	161	161+500
Distanța între picheti m	250.00	250.00	250.00	250.00	250.00	250.00	250.00	250.00
Aliniamente și Curbe m	L = 99.50m							
	L = 2559.85m							





OPTIUNEA 2
SCENARIUL 3
Aliniament : 2A
Scara X : 1/5000
Scara Z : 1/500
Plan Comp : 550.00m

Cote nivel superior sina	163+250.0	163+500.0	163+750.0	164+000.0	164+246.38
Cote teren (N.T.) m	163+250.0	163+500.0	163+750.0	164+000.0	164+246.38
Cote platforma (NP) m	163+250.0	163+500.0	163+750.0	164+000.0	164+246.38
Pozitie kilometrica	163+250.0	163+500.0	163+750.0	164+000.0	164+246.38
Distanta intre picheti m	250.00	250.00	250.00	246.38	147.74m
Aliniamente si Curbe m					