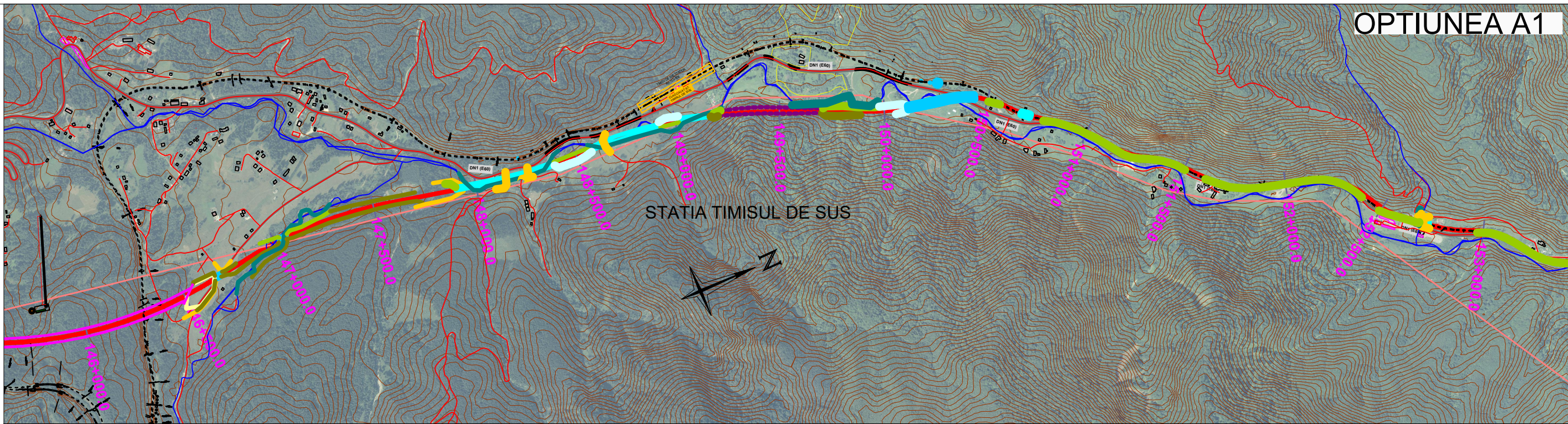
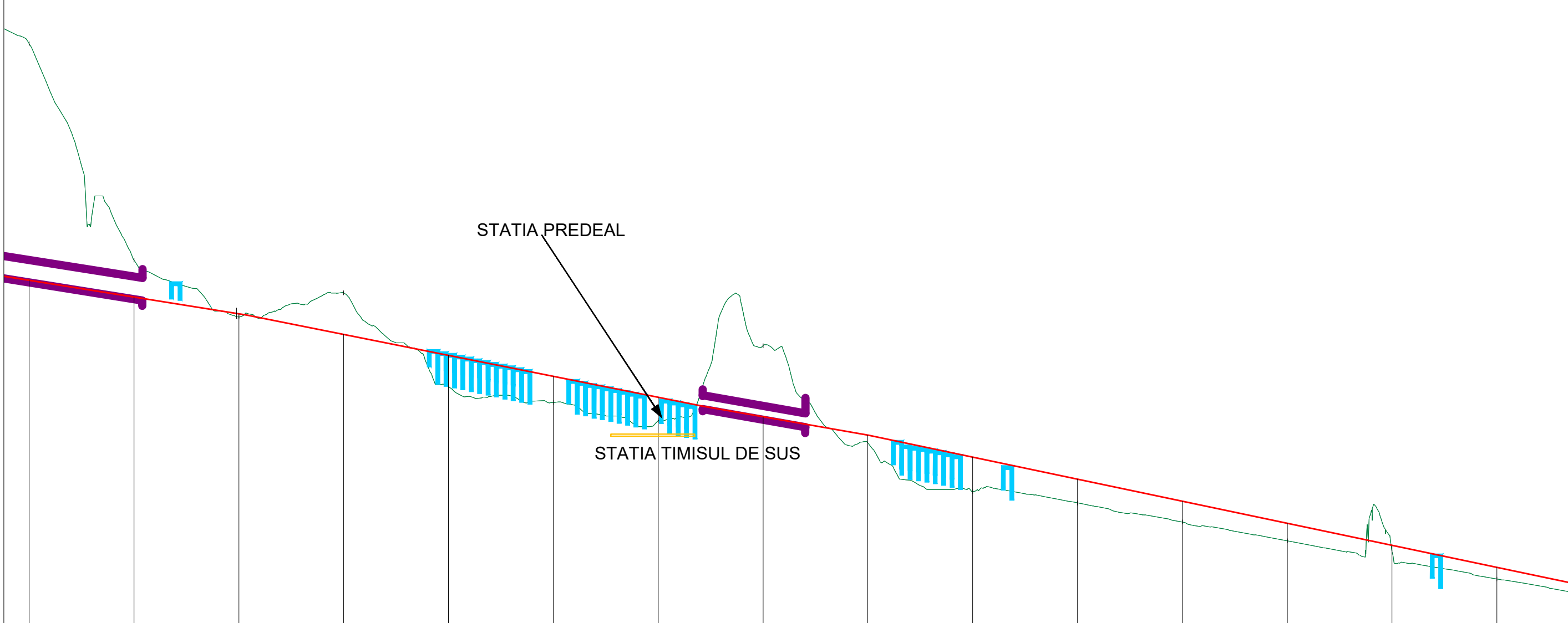


OPTIUNEA A1
Scara X : 1/20000
Scara Z : 1/2000
Plan Comp : 800.00m

Declivitati %	P = 1.27%		P = 1.56%		P = 1.56%		L = 313.38m R = 10000.00m		L = 7448.78m																																																																																																																																																																																																																																																																																																																																																																																																																																																																																																																																																																																																																																																																																																																																																																																																																																																																																																																																																																																																															
Cote nivel superior sina (NSS) m	803.45	803.06	802.39	801.82	801.25	800.68	800.11	799.54	798.97	798.40	797.83	797.26	796.69	796.12	795.55	794.98	794.41	793.84	793.27	792.70	792.13	791.56	790.99	790.42	789.85	789.28	788.71	788.14	787.57	787.00	786.43	785.86	785.29	784.72	784.15	783.58	783.01	782.44	781.87	781.30	780.73	780.16	779.59	779.02	778.45	777.88	777.31	776.74	776.17	775.60	775.03	774.46	773.89	773.32	772.75	772.18	771.61	771.04	770.47	769.90	769.33	768.76	768.19	767.62	767.05	766.48	765.91	765.34	764.77	764.20	763.63	763.06	762.49	761.92	761.35	760.78	760.21	759.64	759.07	758.50	757.93	757.36	756.79	756.22	755.65	755.08	754.51	753.94	753.37	752.80	752.23	751.66	751.09	750.52	749.95	749.38	748.81	748.24	747.67	747.10	746.53	745.96	745.39	744.82	744.25	743.68	743.11	742.54	741.97	741.40	740.83	740.26	739.69	739.12	738.55	737.98	737.41	736.84	736.27	735.70	735.13	734.56	733.99	733.42	732.85	732.28	731.71	731.14	730.57	729.99	729.42	728.85	728.28	727.71	727.14	726.57	726.00	725.43	724.86	724.29	723.72	723.15	722.58	722.01	721.44	720.87	720.30	719.73	719.16	718.59	718.02	717.45	716.88	716.31	715.74	715.17	714.60	714.03	713.46	712.89	712.32	711.75	711.18	710.61	710.04	709.47	708.90	708.33	707.76	707.19	706.62	706.05	705.48	704.91	704.34	703.77	703.20	702.63	702.06	701.49	700.92	700.35	799.78	799.21	798.64	798.07	797.50	796.93	796.36	795.79	795.22	794.65	794.08	793.51	792.94	792.37	791.80	791.23	790.66	790.09	789.52	788.95	788.38	787.81	787.24	786.67	786.10	785.53	784.96	784.39	783.82	783.25	782.68	782.11	781.54	780.97	780.40	779.83	779.26	778.69	778.12	777.55	776.98	776.41	775.84	775.27	774.70	774.13	773.56	772.99	772.42	771.85	771.28	770.71	770.14	769.57	769.00	768.43	767.86	767.29	766.72	766.15	765.58	765.01	764.44	763.87	763.30	762.73	762.16	761.59	761.02	760.45	759.88	759.31	758.74	758.17	757.60	757.03	756.46	755.89	755.32	754.75	754.18	753.61	753.04	752.47	751.90	751.33	750.76	750.19	749.62	749.05	748.48	747.91	747.34	746.77	746.20	745.63	745.06	744.49	743.92	743.35	742.78	742.21	741.64	741.07	740.50	739.93	739.36	738.79	738.22	737.65	737.08	736.51	735.94	735.37	734.80	734.23	733.66	733.09	732.52	731.95	731.38	730.81	730.24	729.67	729.10	728.53	727.96	727.39	726.82	726.25	725.68	725.11	724.54	723.97	723.40	722.83	722.26	721.69	721.12	720.55	719.98	719.41	718.84	718.27	717.70	717.13	716.56	715.99	715.42	714.85	714.28	713.71	713.14	712.57	712.00	711.43	710.86	710.29	709.72	709.15	708.58	708.01	707.44	706.87	706.30	705.73	705.16	704.59	704.02	703.45	702.88	702.31	701.74	701.17	700.60	700.03	799.46	798.89	798.32	797.75	797.18	796.61	796.04	795.47	794.90	794.33	793.76	793.19	792.62	792.05	791.48	790.91	790.34	789.77	789.20	788.63	788.06	787.49	786.92	786.35	785.78	785.21	784.64	784.07	783.50	782.93	782.36	781.79	781.22	780.65	780.08	779.51	778.94	778.37	777.80	777.23	776.66	776.09	775.52	774.95	774.38	773.81	773.24	772.67	772.10	771.53	770.96	770.39	769.82	769.25	768.68	768.11	767.54	766.97	766.40	765.83	765.26	764.69	764.12	763.55	762.98	762.41	761.84	761.27	760.70	760.13	759.56	758.99	758.42	757.85	757.28	756.71	756.14	755.57	755.00	754.43	753.86	753.29	752.72	752.15	751.58	751.01	750.44	749.87	749.30	748.73	748.16	747.59	747.02	746.45	745.88	745.31	744.74	744.17	743.60	743.03	742.46	741.89	741.32	740.75	740.18	739.61	739.04	738.47	737.90	737.33	736.76	736.19	735.62	735.05	734.48	733.91	733.34	732.77	732.20	731.63	731.06	730.49	729.92	729.35	728.78	728.21	727.64	727.07	726.50	725.93	725.36	724.79	724.22	723.65	723.08	722.51	721.94	721.37	720.80	720.23	719.66	719.09	718.52	717.95	717.38	716.81	716.24	715.67	715.10	714.53	713.96	713.39	712.82	712.25	711.68	711.11	710.54	709.97	709.40	708.83	708.26	707.69	707.12	706.55	705.98	705.41	704.84	704.27	703.70	703.13	702.56	701.99	701.42	700.85	700.28	799.71	799.14	798.57	798.00	797.43	796.86	796.29	795.72	795.15	794.58	794.01	793.44	792.87	792.30	791.73	791.16	790.59	790.02	789.45	788.88	788.31	787.74	787.17	786.60	786.03	785.46	784.89	784.32	783.75	783.18	782.61	782.04	781.47	780.90	780.33	779.76	779.19	778.62	778.05	777.48	776.91	776.34	775.77	775.20	774.63	774.06	773.49	772.92	772.35	771.78	771.21	770.64	770.07	769.50	768.93	768.36	767.79	767.22	766.65	766.08	765.51	764.94	764.37	763.80	763.23	762.66	762.09	761.52	760.95	760.38	759.81	759.24	758.67	758.10	757.53	756.96	756.39	755.82	755.25	754.68	754.11	753.54	752.97	752.40	751.83	751.26	750.69	750.12	749.55	748.98	748.41	747.84	747.27	746.70	746.13	745.56	744.99	744.42	743.85	743.28	742.71	742.14	741.57	741.00	740.43	739.86	739.29	738.72	738.15	737.58	737.01	736.44	735.87	735.30	734.73	734.16	733.59	733.02	732.45	731.88	731.31	730.74	730.17	729.60	729.03	728.46	727.89	727.32	726.75	726.18	725.61	725.04	724.47	723.90	723.33	722.76	722.19	721.62	721.05	720.48	719.91	719.34	718.77	718.20	717.63	717.06	716.49	715.92	715.35	714.78	714.21	713.64	713.07	712.50	711.93	711.36	710.79	710.22	709.65	709.08	708.51	707.94	707.37	706.80	706.23	705.66	705.09	704.52	703.95	703.38	702.81	702.24	701.67	701.10	700.53	799.96	799.39	798.82	798.25	797.68	797.11	796.54	795.97	795.40	794.83	794.26	793.69	793.12	792.55	791.98	791.41	790.84	790.27	789.70	789.13	788.56	787.99	787.42	786.85	786.28	785.71	785.14	784.57	784.00	783.43	782.86	782.29	781.72	781.15	780.58	779.99	779.42	778.85	778.28	777.71	777.14	776.57	776.00	775.43	774.86	774.29	773.72	773.15	772.58	772.01	771.44	770.87	770.30	769.73	769.16	768.59	768.02	767.45	766.88	766.31	765.74	765.17	764.60	764.03	763.46	762.89	762.32	761.75	761.18	760.61	760.04	759.47	758.90	758.33	757.76	757.19	756.62	756.05	755.48	754.91	754.34	753.77	753.20	752.63	752.06	751.49	750.92	750.35	749.78	749.21	748.64	748.07	747.50	746.93	746.36	745.79	745.22	744.65	744.08	743.51	742.94	742.37	741.80	741.23	740.66	740.09	739.52	738.95	738.38	737.81	737.24	736.67	736.10	735.53	734.96	734.39	733.82	733.25	732.68	732.11	731.54	730.97	730.40	729.83	729.26	728.69	728.12	727.55	726.98	726.41	725.84	725.27	724.70	724.13	723.56	722.99	722.42	721.85	721.28	720.71	720.14	719.57	719.00	718.43	717.86	717.29	716.72	716.15	715.58	715.01	714.44	713.87	713.30	712.73	712.16	711.59	711.02	710.45	709.88	709.31	708.74	708.17	707.60	707.03	706.46	705.89	705.32	704.75	704.18	703.61	703.04	702.47	701.90	701.33	700.76	700.19	799.62	799.05	798.48	797.91	797.34	796.77	796.20	795.63	795.06	794.49	793.92	793.35	792.78	792.21	791.64	791.07	790.50	789.93	789.36	788.79	788.22	787.65	787.08	786.51	785.94	785.37	784.80	784.23	783.66	783.09	782.52	781.95	781.38	780.81	780.24	779.67	779.10	778.53	777.96	777.39	776.82	776.25	775.68	775.11	774.54	773.97	773.40	772.83	772.26	771.69	771.12	770.55	769.98	769.41	768.84	768.27	767.70	767.13	766.56	765.99	765.42	764.85	764.28	763.71	763.14	762.57	762.00	761.43	760.86	760.29	759.72	759.15	758.58	758.01	757.44	756.87	756.30	755.73	755.16	754.59	754.02	753.45	752.88	752.31	751.74	751.17	750.60	749.99	749.42	748.85	748.28	747.71	747.14	746.57	746.00	745.43	744.86	744.29	743.72	743.15

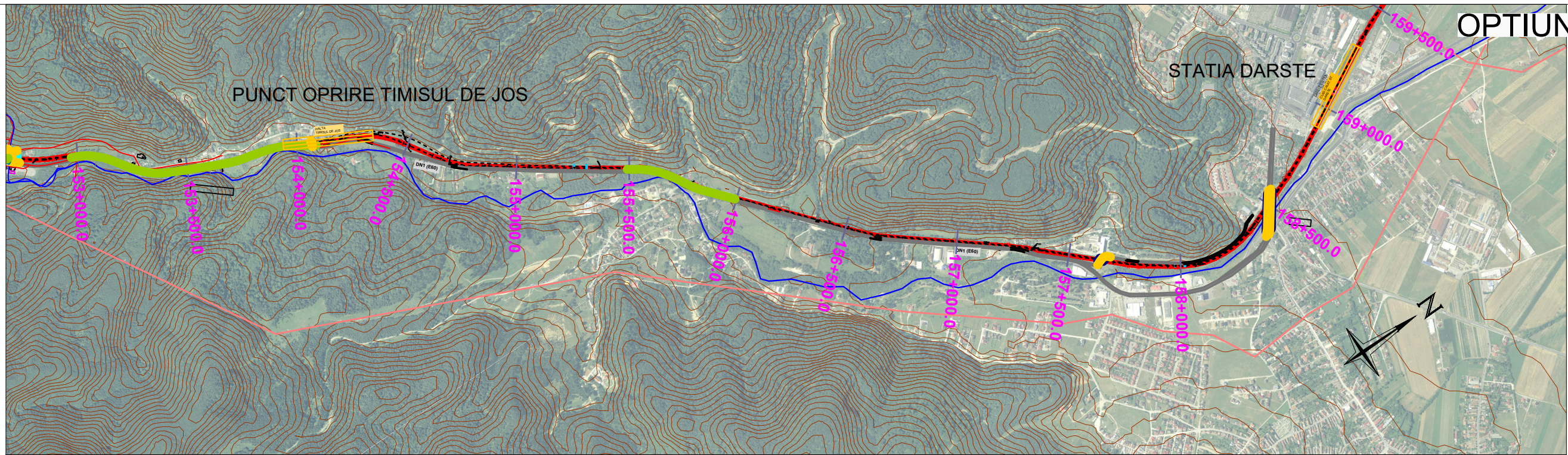


← PREDEAL BRASOV →

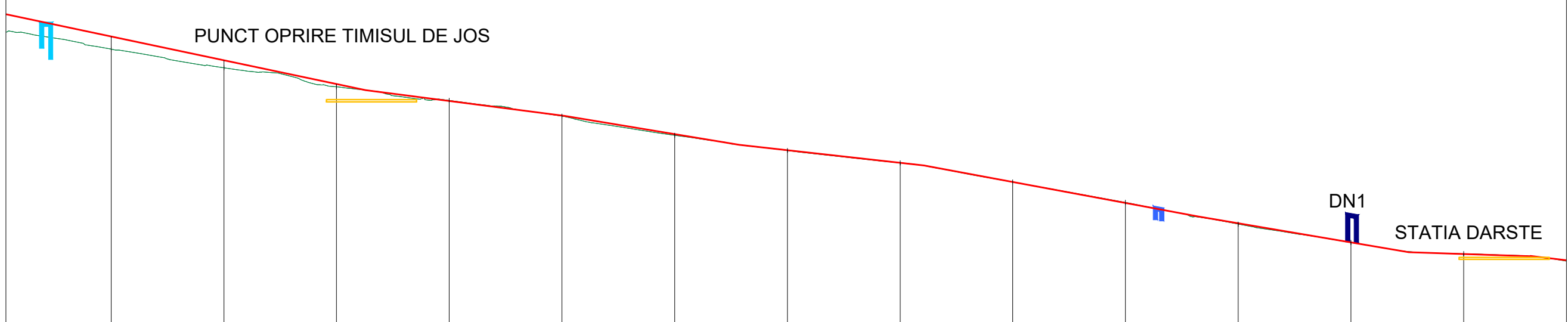


OPTIUNEA A1
Scara X : 1/20000
Scara Z : 1/2000
Plan Comp : 750.00m

Declivitati ‰	P = 1.8%		P = 2.0%		P = 1.75%		P = 2.1%							
Cote nivel superior sina (NSS) m	809.82	807.82	803.24	803.98	811.55	802.86	795.95	794.44	774.93	764.42	753.90	743.39	732.88	
Cote teren (N.T.) m	809.82	807.38	802.24	803.83	819.11	802.86	782.18	780.44	763.58	754.50	746.52	740.19	727.28	
Pozitie kilometrica	14+000	14+500	14+000	14+500	14+000	14+500	15+000	15+500	15+000	15+500	16+000	16+500	17+000	
Distanta intre picheti m	500.00	500.00	500.00	500.00	500.00	500.00	500.00	500.00	500.00	500.00	500.00	500.00	500.00	
Aliniamente si Curbe m	A = 509.902 R = 2000.00m		L = 586.93m R = 2000.00m		L = 351.34m R = 2000.00m		L = 130.00m R = 2000.00m		L = 200.44m R = 2000.00m		L = 130.00m R = 2000.00m		L = 455.41m R = 2000.00m	



← PREDEAL → BRASOV →



OPTIUNEA A1
Scara X : 1/20000
Scara Z : 1/2000
Plan Comp : 600.00m

Declivitati %	p = 2.1%		p = 2.1%		p = 1.3%		p = 1.64%		p = 1.12%		p = 1.86%		p = 1.7%		p = 0.33%	
Cote nivel superior sina (NSS) m	752.38		752.38		751.83		750.29		747.98		746.54		745.14		743.66	
Cote teren (N.T.) m	752.38	752.38	751.83	751.83	750.29	750.29	747.98	747.98	746.54	746.54	745.14	745.14	743.66	743.66	743.66	743.66
Pozitie kilometrica	15+000	15+500	16+000	16+500	17+000	17+500	18+000	18+500	19+000	19+500	20+000	20+500	21+000	21+500	22+000	22+500
Distanța între picheti m	500.00	500.00	500.00	500.00	500.00	500.00	500.00	500.00	500.00	500.00	500.00	500.00	500.00	500.00	500.00	500.00
Aliniamente și Curbe m	[Detailed diagram showing vertical curves, grades, and stationing for the road profile.]															

