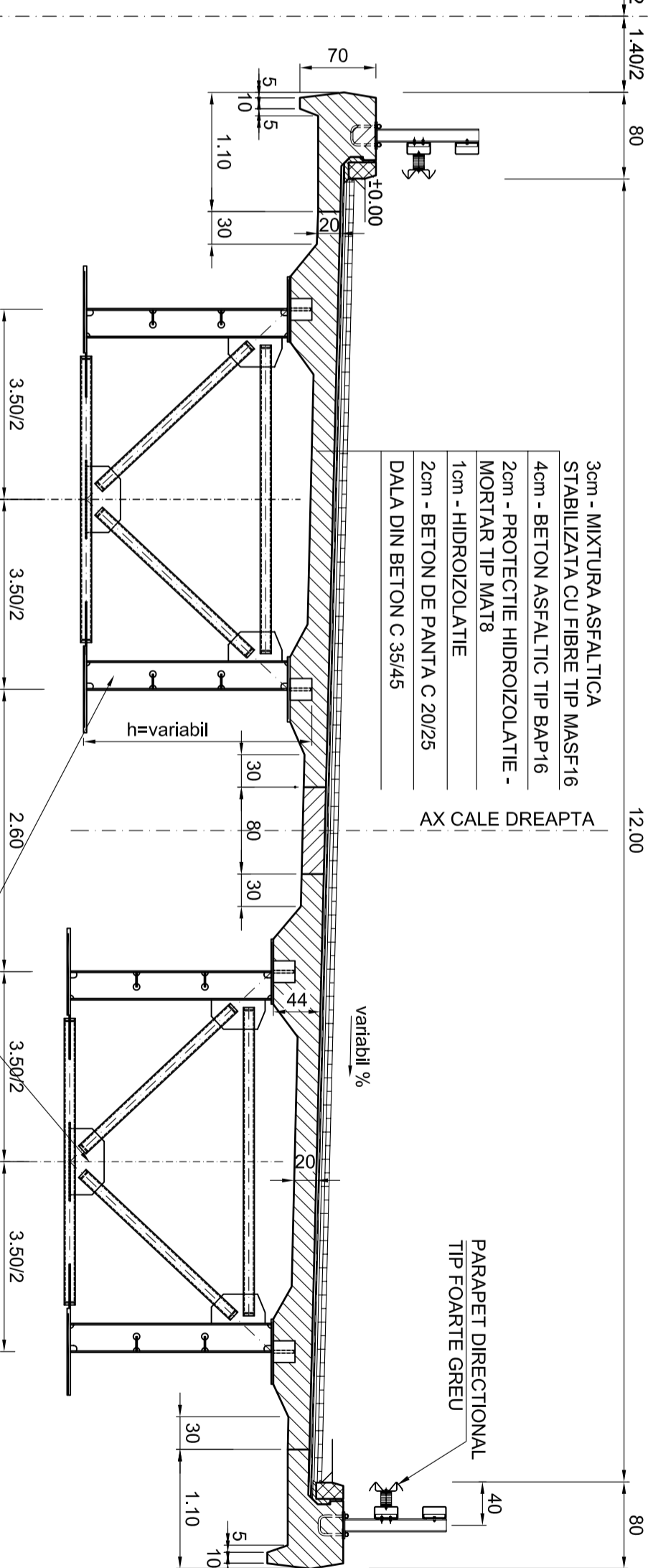
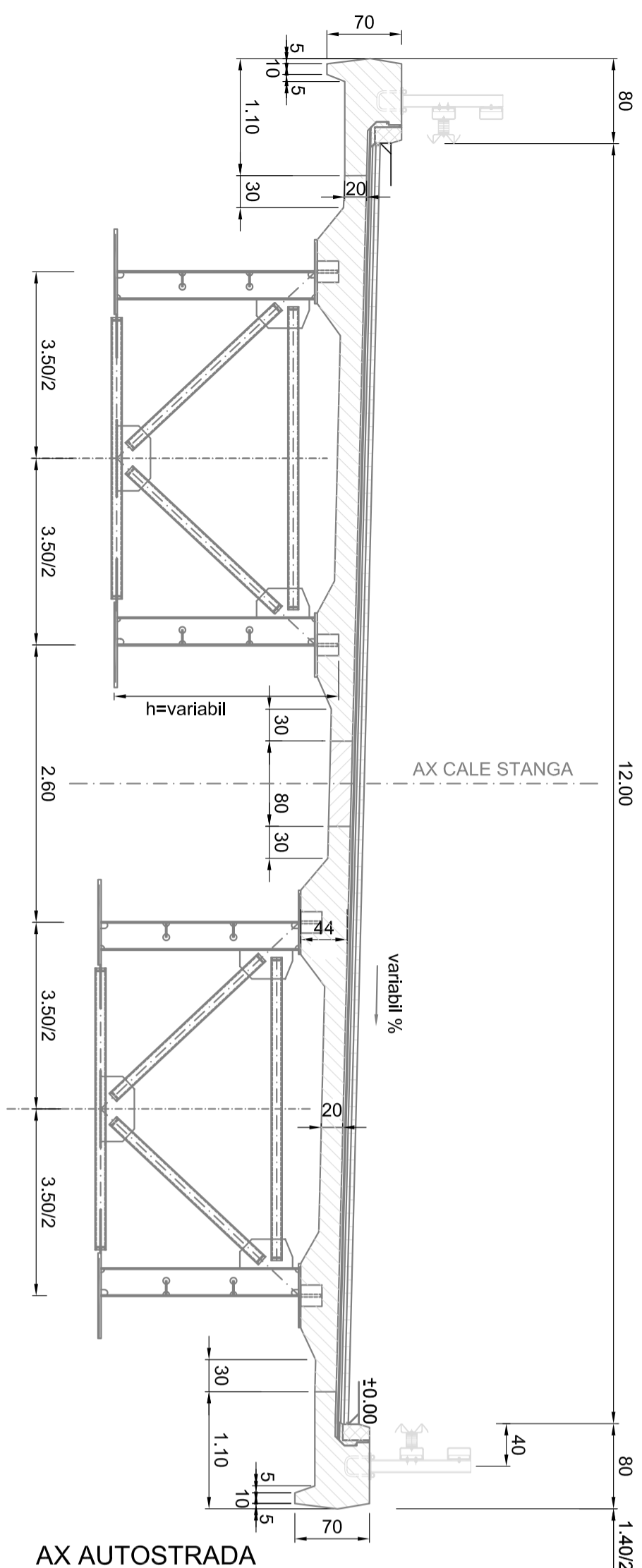


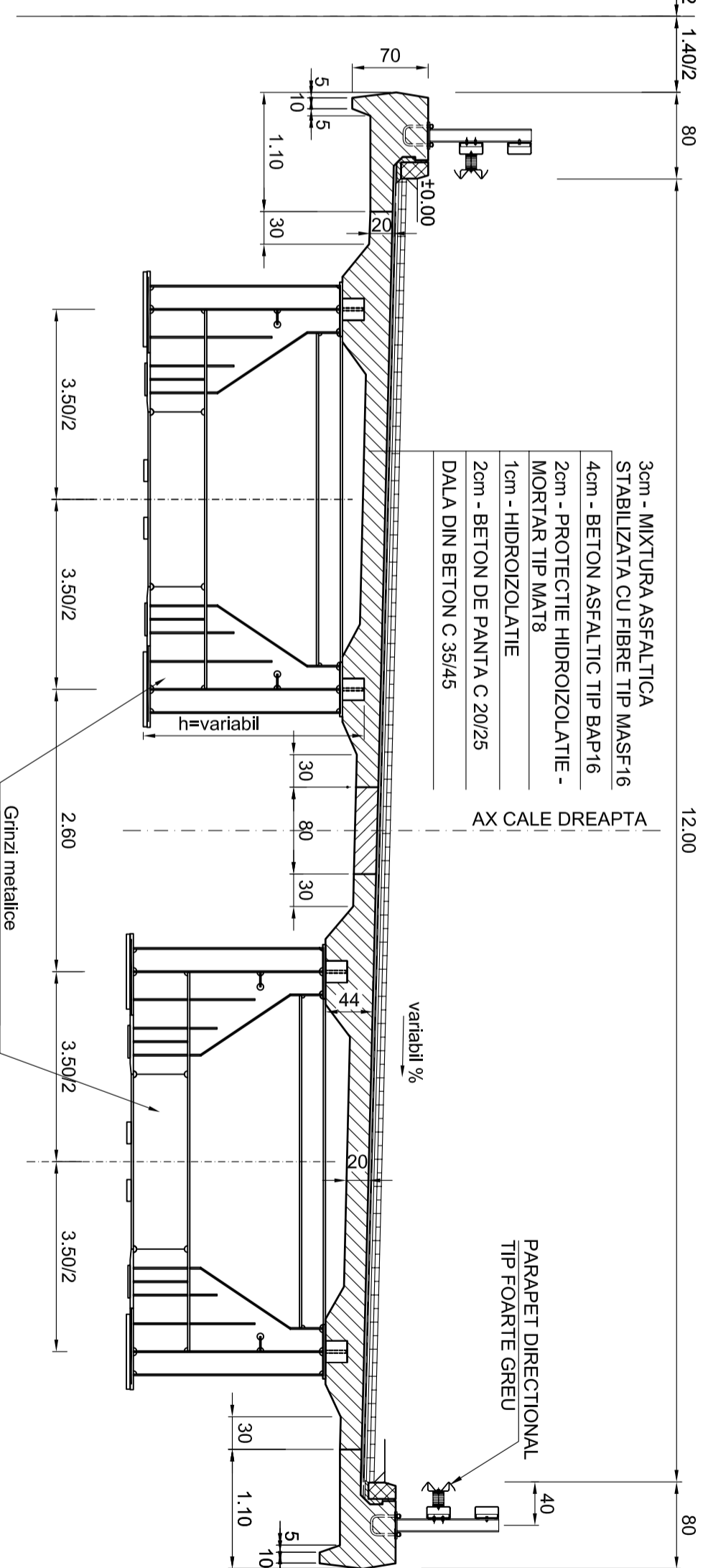
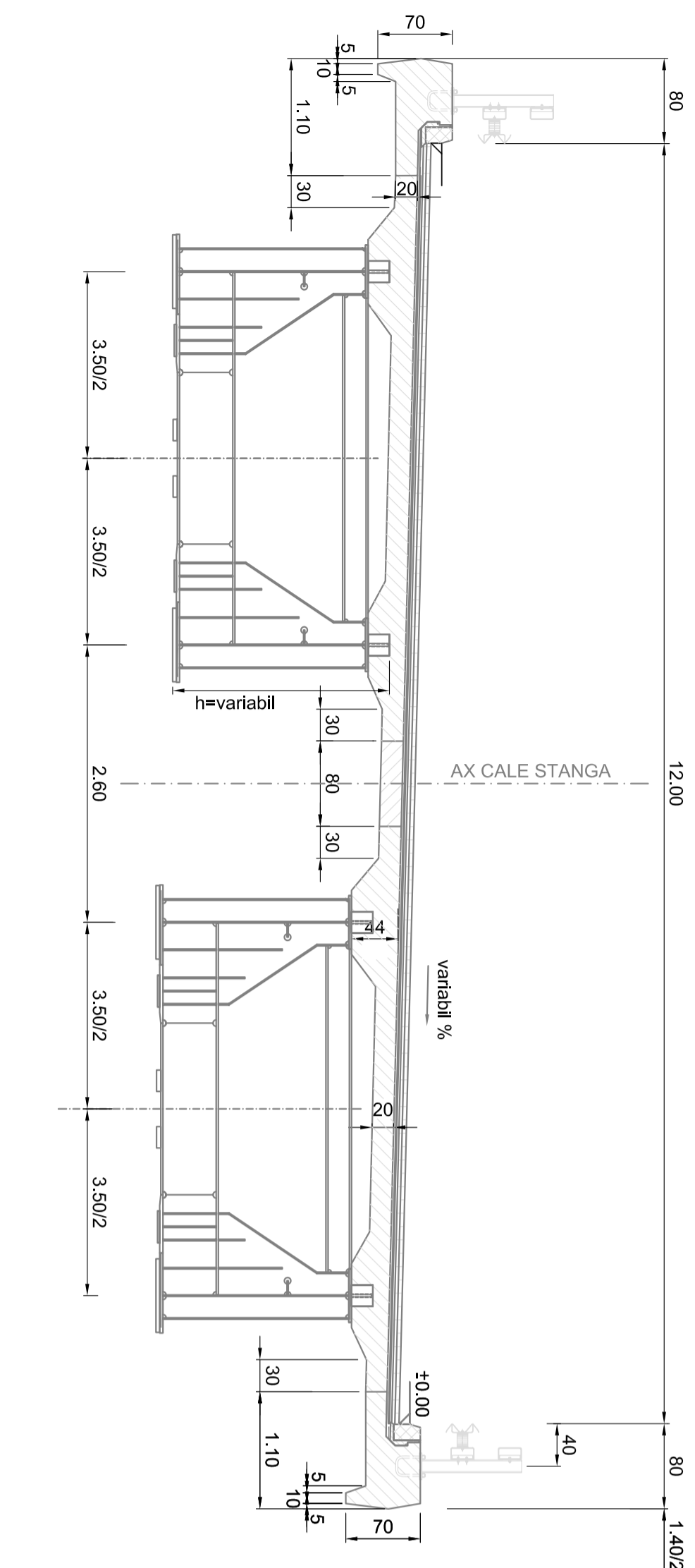
SECTIUNI TRANSVERSALE

ÎN CÂMP



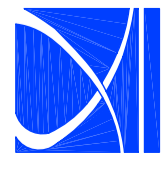
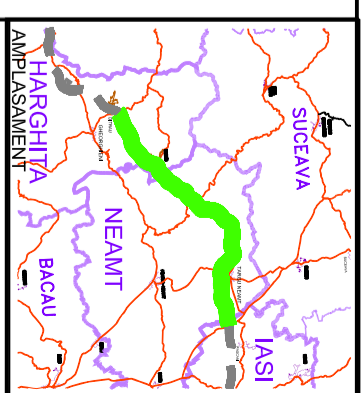
NOTA:
 SE APLICA LA
 STRUCTURILE:
 8: 22; 23; 26a; 49; 53;
 54; 58; 65; 67; 68; 77;
 79; 86; 87; 88; 91; 93;
 110; 114; 117; 120;
 145; 160;

PE REAZEM



- 3cm - MIXTURA ASFALTICA STABILIZATA CU FIBRE TIP MASF-16
- 4cm - BETON ASFALTIC TIP BAP16
- 2cm - PROTECTIE HIDROIZOLATIE - MORTAR TIP MAT8
- 1cm - HIDROIZOLATIE
- 2cm - BETON DE PANTA C 20/25
- DALA DIN BETON C 35/45

PARAPET DIRECTIONAL
 TIP FOARTE GREU



IPTANA S.A.

INVESTITIA

AUTOSTRADA
 DITRAU - TARGU NEAMT

CONTRACT Nr: 92 / 58623 / 4275

FAZA DE PROIECTARE
 Studiu de Fezabilitate

Proiectat Ing. I. Stolan

Desenat th. M. Albu

Verificat Ing. C. Gădean

Ser. Proiect Ing. V. Osman

LUCRARI DE PODURI

Scara: 1:50
 Data: IANUARIE 2011
 SECTIUNE TRANSVERSALA
 POD CU SUPRASTRUCTURA
 COMPUSA DIN OTEL BETON
 (B)

Doc: IPT-SF-P-ST-200 Rev: 0