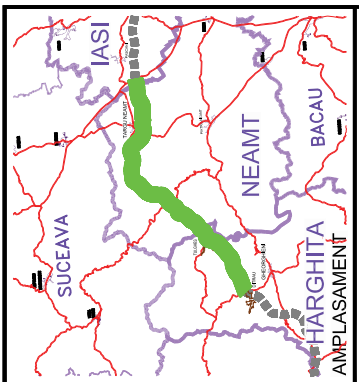
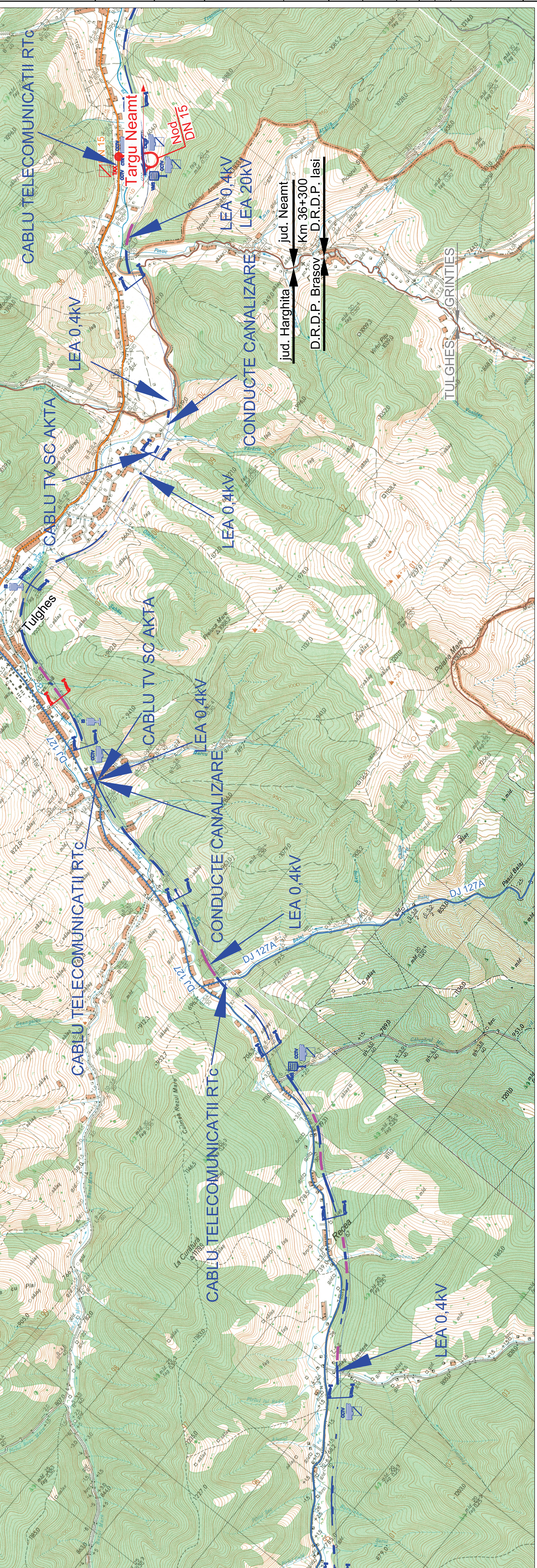
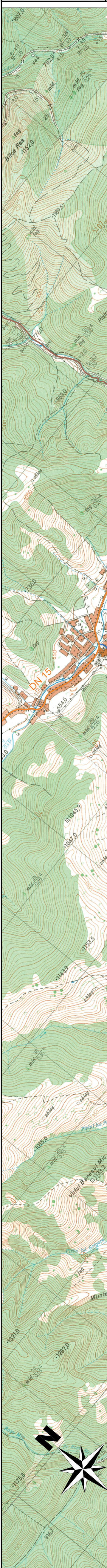


	INFRASTRUCTURA COMUNICATII
	TRASEU AUTOSTRADA
	TUNELURI
	PODURI
	DRUMURI NATIONALE
	DRUMURI JUDETENE
	LIMITA JUDETE
	CAMERE VIDEO
	SISTEM S.O.S.
	SISTEM S.O.S. TUNEL
	PANOURI MESAJE VARIABLE
	DETECTOARE
	STATII METEO
	SISTEME SCADA
	SISTEM TAXARE
	DETECTIE INCIDENTE



BENEFICIAR	
COMPANIA NATIONALA DE AUTOSTRAZI SI DRUMURI NATIONALE DIN ROMANIA	
PROIECTANT	
IPTANA S.A.	
PROIECTANT DE SPECIALITATE SISTEME DE COMUNICATII	
S.C. PROTELCO S.A. CAMPINA	
INVESTITIA	
AUTOSTRADA DITRAU - TARGU NEAMT Km 0+000 - Km 118+100	
CONTRACT NR. 92 / 58623 / 4275	
FAZA DE PROIECTARE	
Studiu de Fezabilitate Sisteme de Comunicatii si Infrastructura aferenta	
Proiectat ing. I. Serban	Desenat ing. M. Schiopu
Verificat ing. C. In Parascu	Sef Proiect ing. V. OSMAN
Scara: 1:25.000	
Data: DECEMBRIE 2010	
Plan de ansamblu Sisteme de comunicatii	
Code: IPT-SF-COMP-PA-02	Rev.: 0

