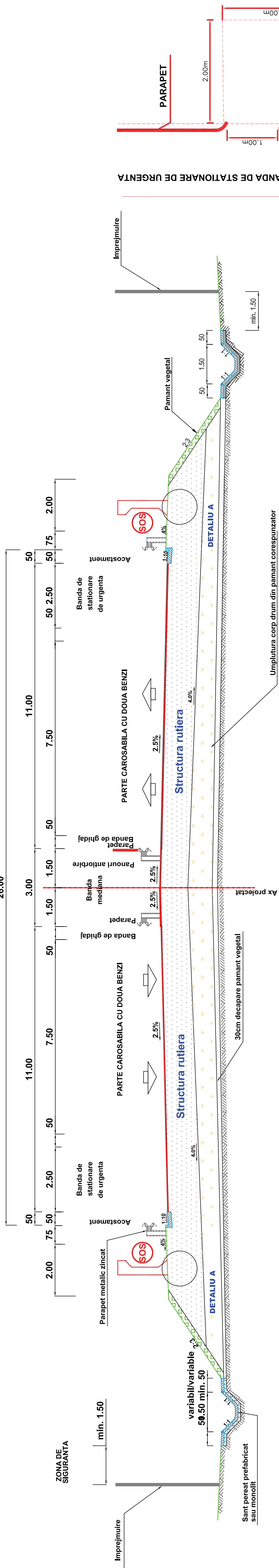
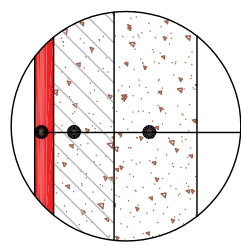


PLATFORMA PENTRU APEL URGENTA

SCARA 1:100

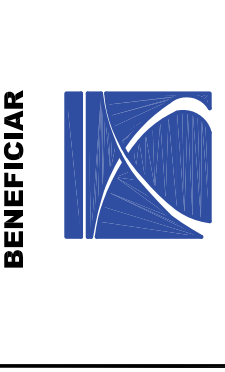
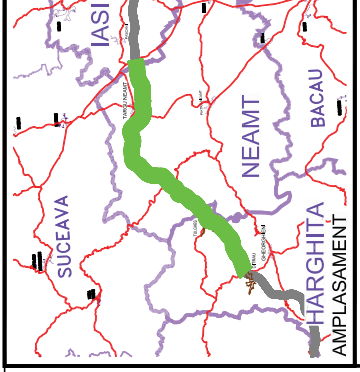
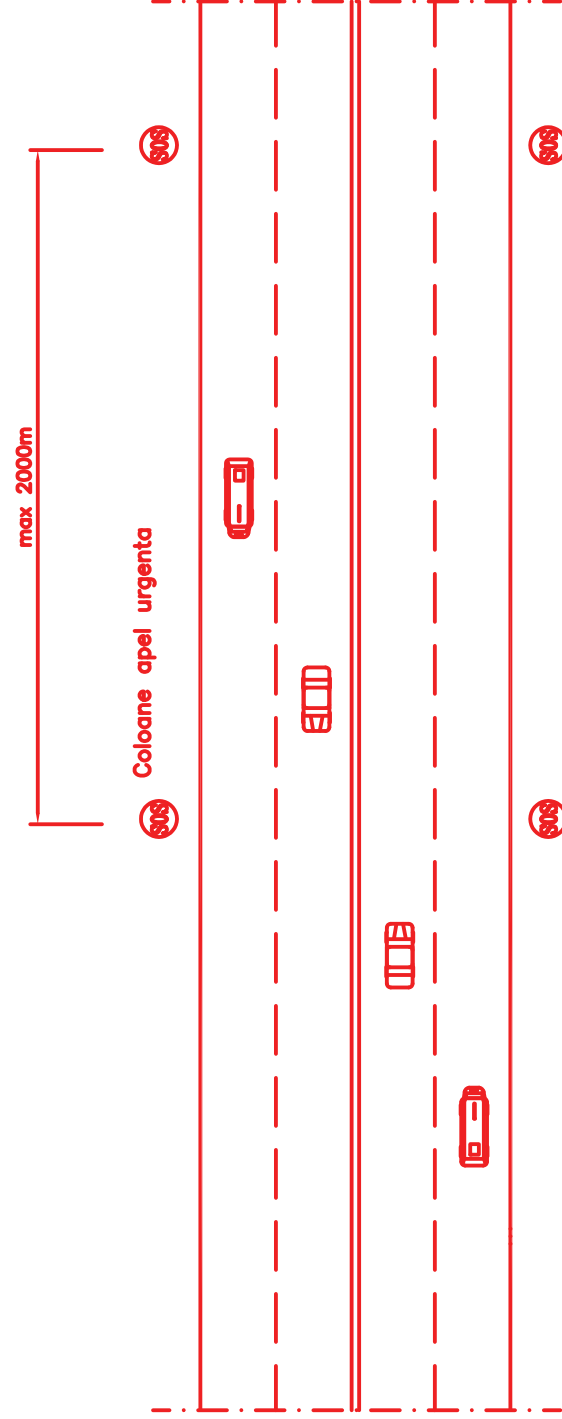


DETALIU A/A DETAIL
Sc. 1:20

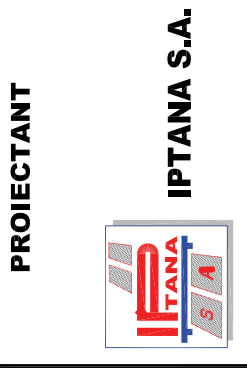


- 5cm beton asfaltic - SR 174/1-2002
- 16cm agregate naturale stabilizate cu ciment - STAS 10473/1-87
- balast - STAS 662-2002. STAS 6400-84

VEDERE IN PLAN



BENEFICIAR
COMPANIA NATIONALA DE AUTOSTRAZI
SI DRUMURI NATIONALE DIN ROMANIA



INVESTITIA
AUTOSTRADA
DITRAU - TARGU NEAMT

CONTRACT Nr: 92 / 58623 / 4275

FAZA DE PROIECTARE
Studiu de Fezabilitate

Proiectat ing. A. Craciun	Desenat ing. A. Craciun
Verificat ing. M. Morolau	Sef Proiect ing. V. Osman

LUCRARI DE DRUMURI

Scara: 1:100

Data: IANUARIE 2011

**PLATFORMA PENTRU
APEL URGENTA**