

**BENEFICIAR**

COMPANIA NATIONALA DE AUTOSTRAZI  
SI DRUMURI NATIONALE DIN ROMANIA

**PROIECTANT**

**IPTANA S.A.**

**INVESTITIA**

AUTOSTRADA  
DITRAU - TARGU NEAMT

CONTRACT Nr. 92 / 58623 / 4275

**FAZA DE PROIECTARE**  
Studiu de Fezabilitate

Proiectat	Ingenier
Ing. A. Craciun	Ing. A. Craciun
Verificat	Ing. M. Moroiu
Ing. V. Osman	

**LUCRARI DE DRUMURI**

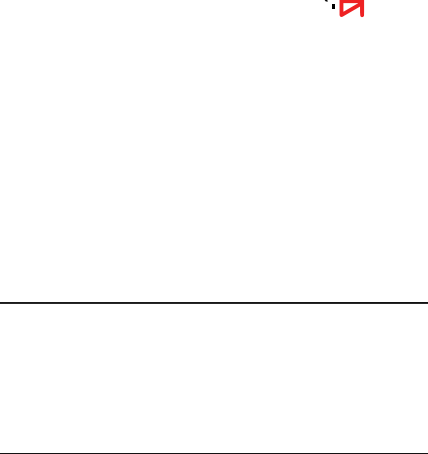
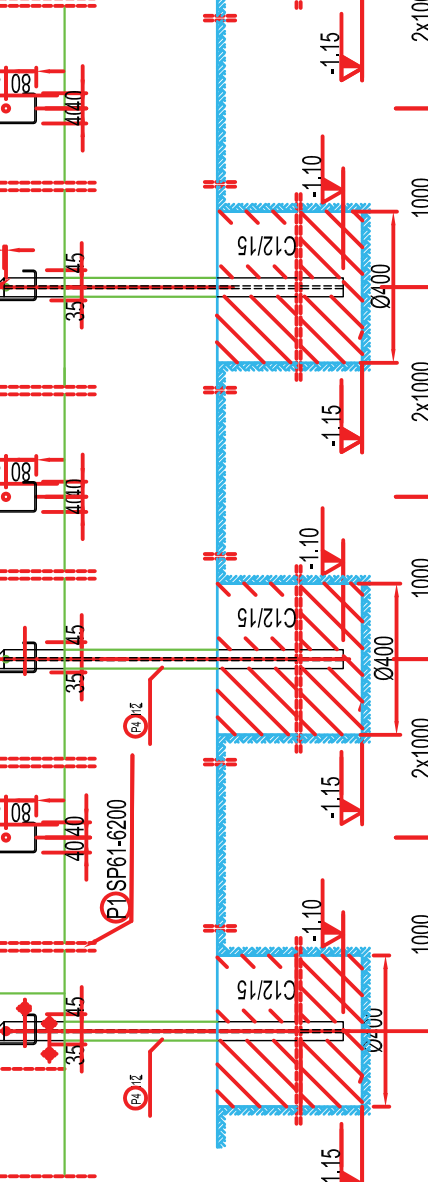
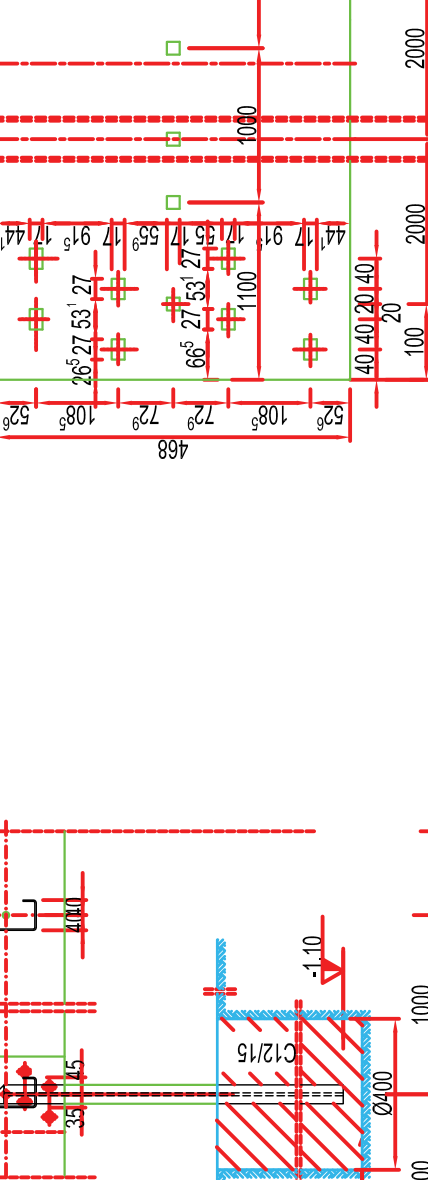
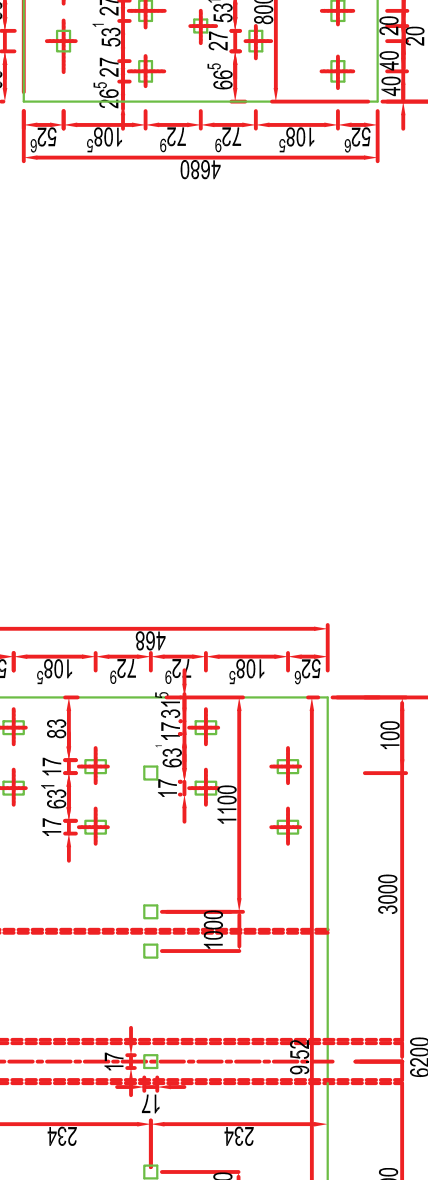
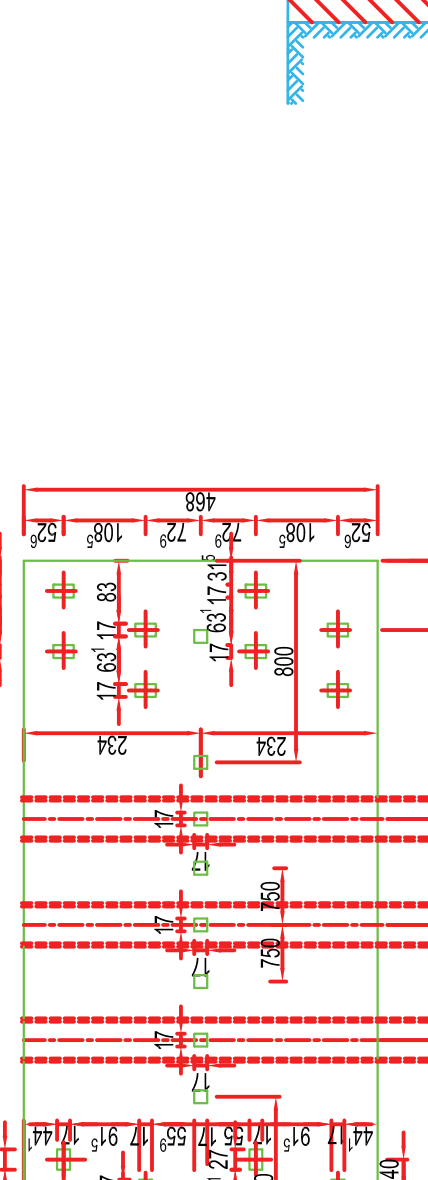
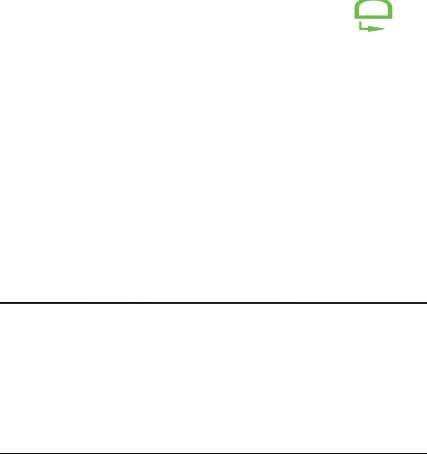
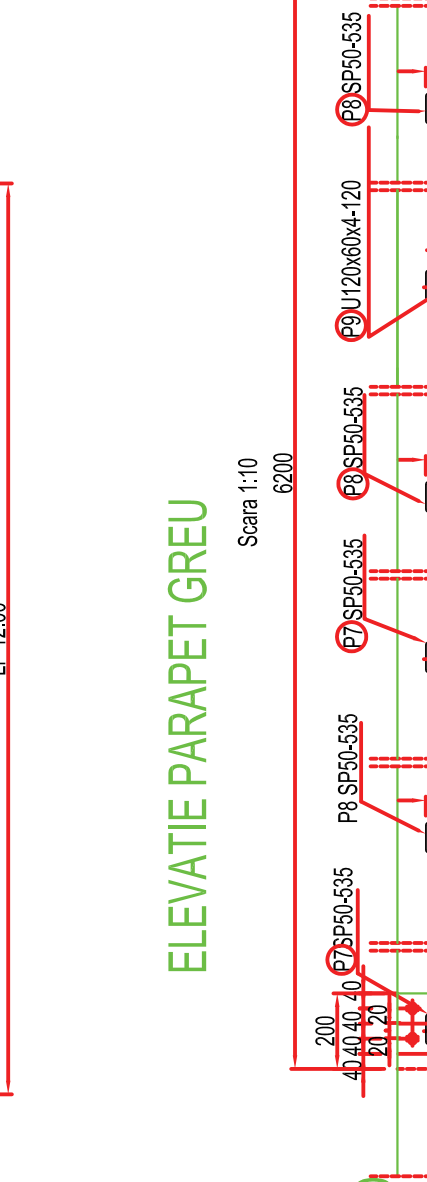
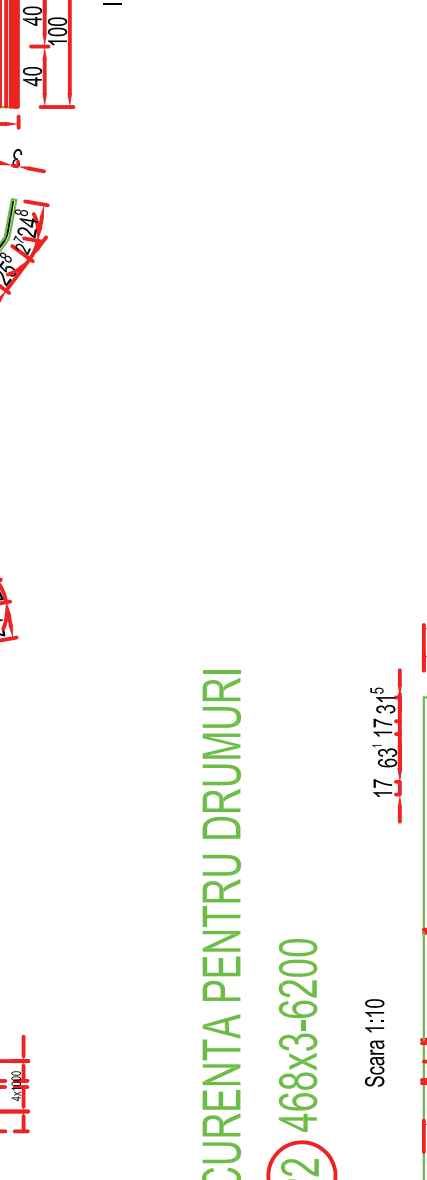
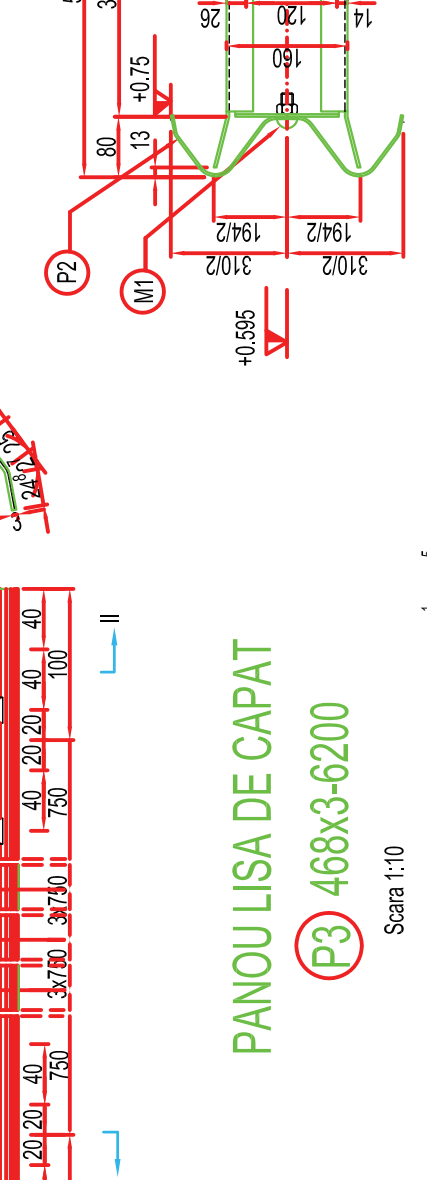
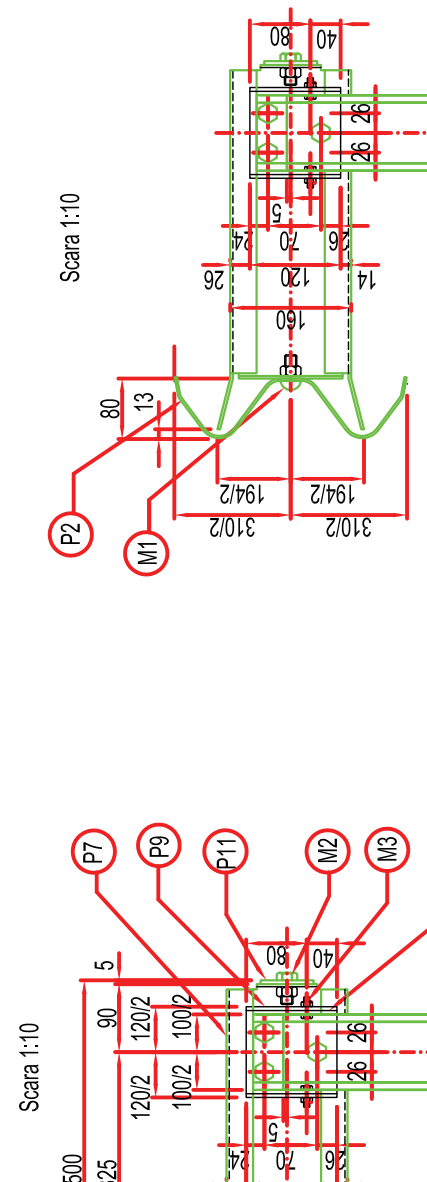
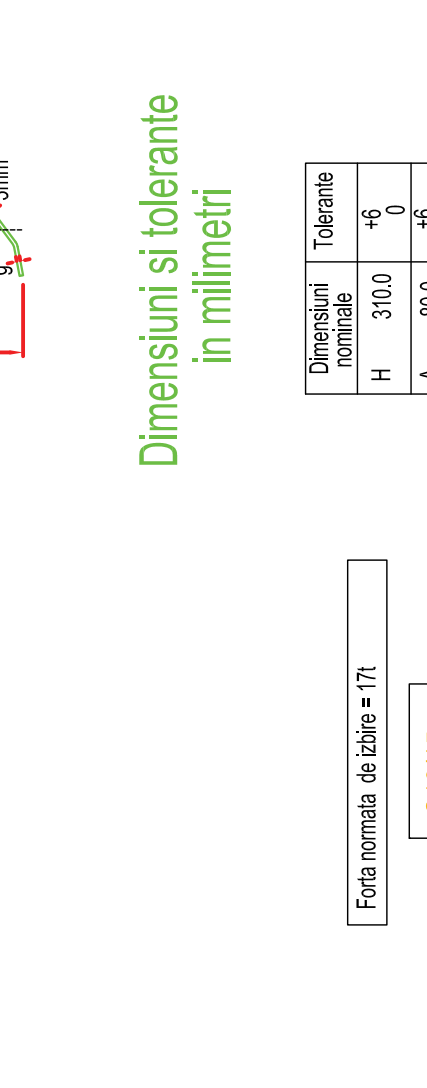
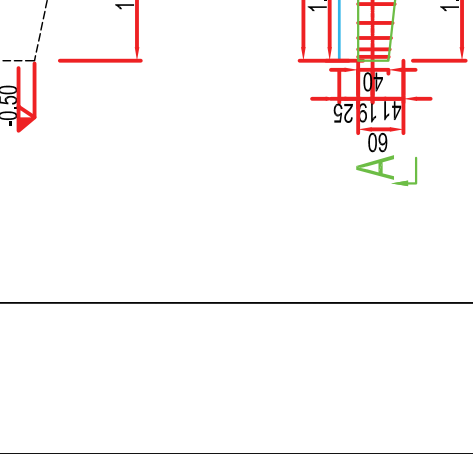
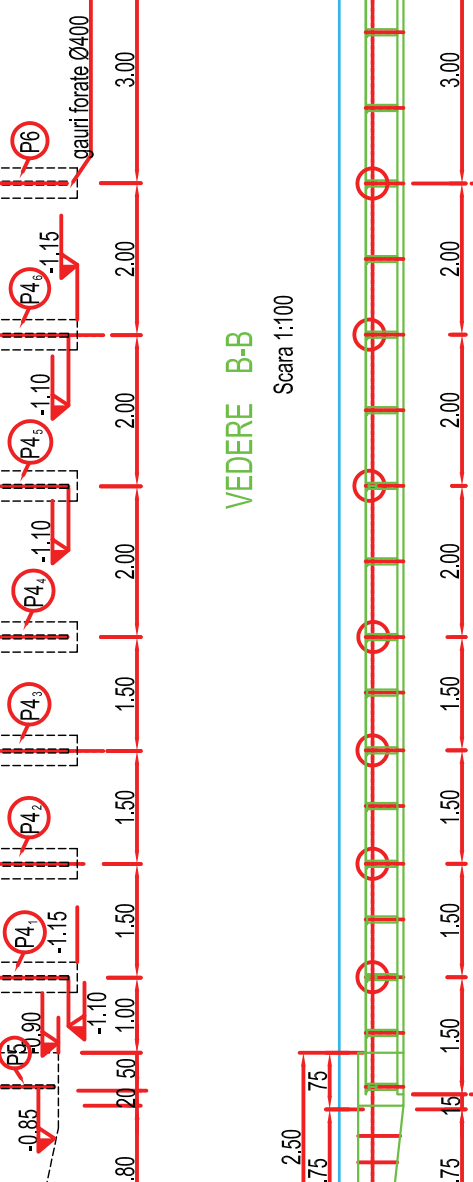
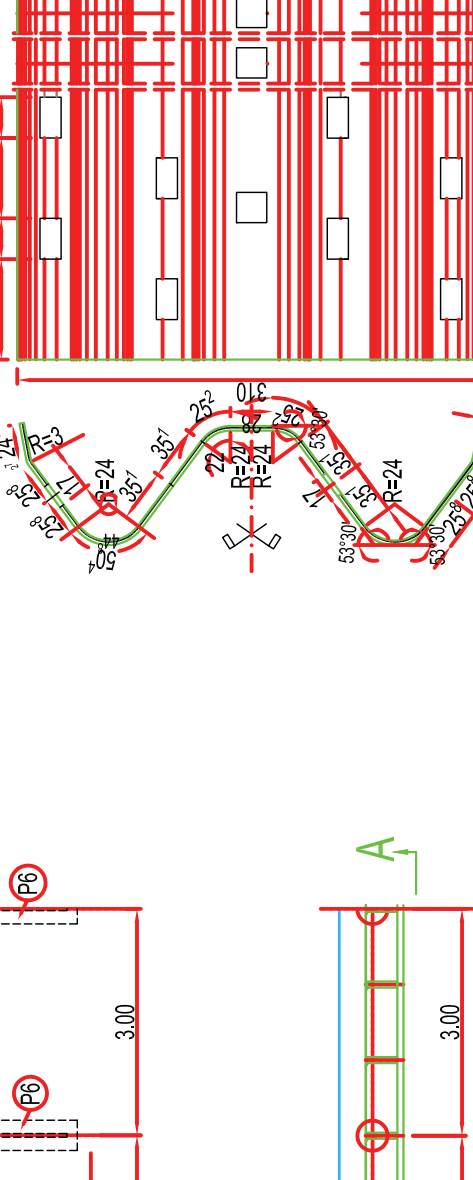
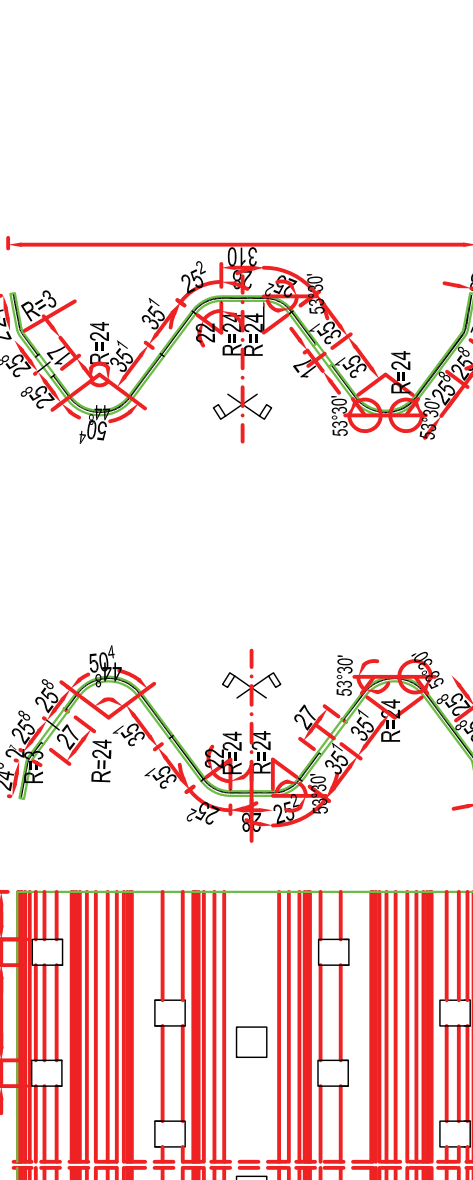
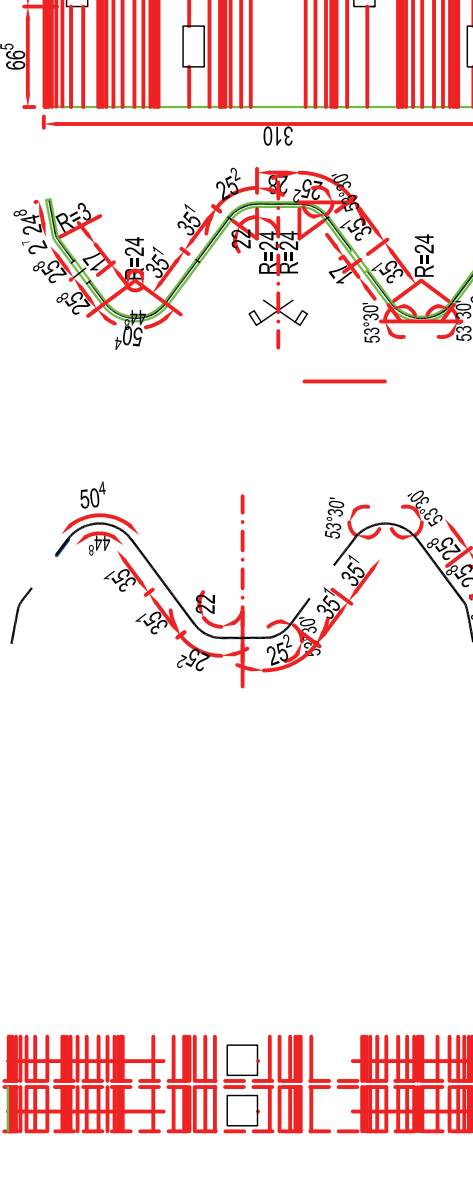
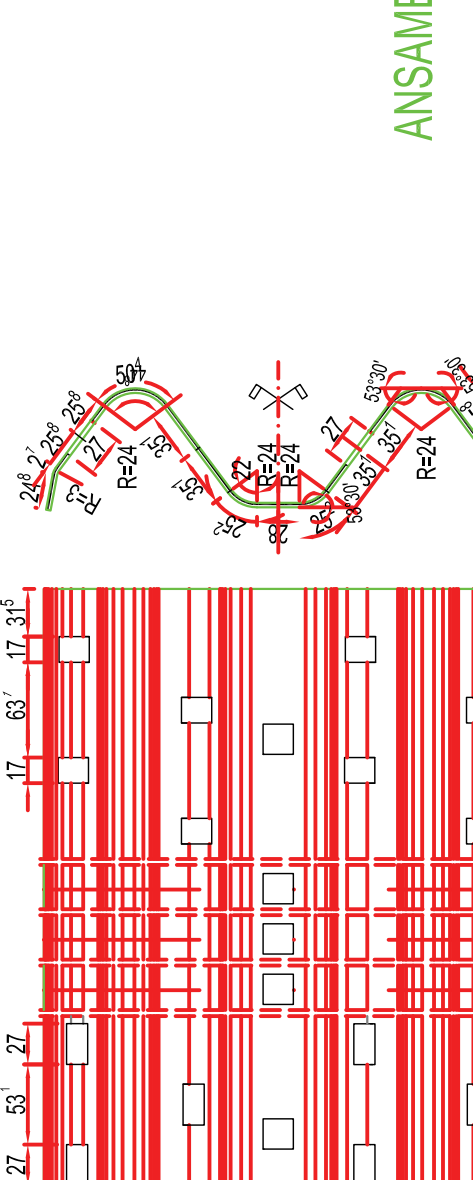
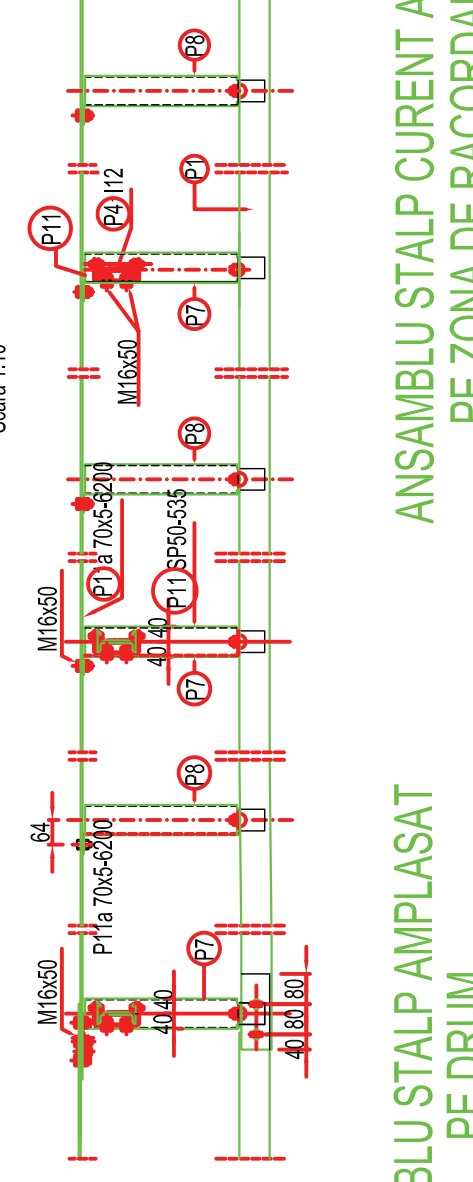
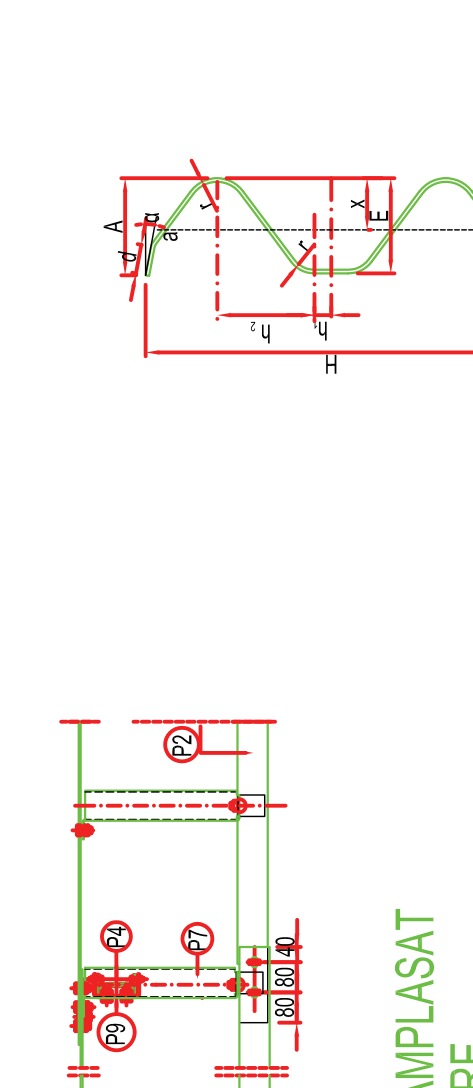
Scara: 1:100 / 1:10 / 1:2

Data: IANUARIE 2011

**DETALIU PARAPETE DE  
SIGURANTA DEFORMABIL  
TIP H1**

Incarcarea tipurilor de parapete pentru drumuri  
in clasele de performanta din SREN 131771.2

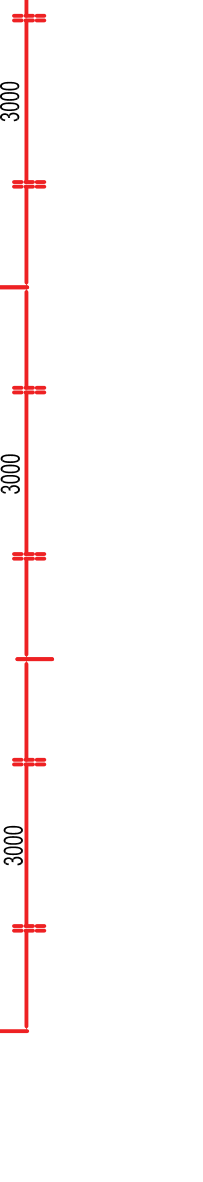
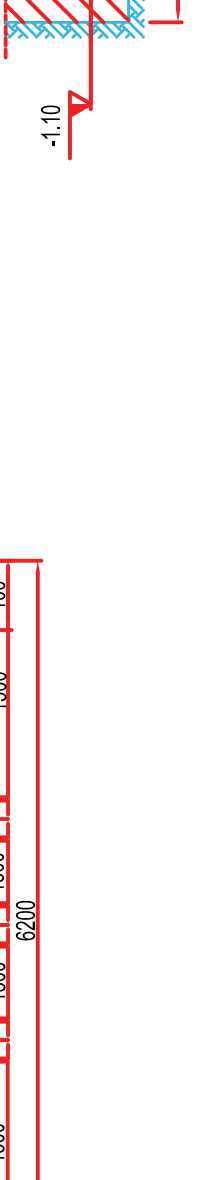
Nr. cat. Item	Descrierea elementului conform STAS 19487*	Tip parapet STAS 19487*	Nivelul proiectat 131771.2	Inversan	Masa totala a vehiculului kg	Vehicul
1	Parapete deformabil	seria greu	protecie normala	N1	TB 31 1.500	autoturism
		greu	protecie idicata	H1	TB 11 900	autoturism
		foarte greu	protecie idicata	H3	TB 42 10.000	vehicul greu nesolicitat
			protecie idicata	H3	TB 11 900	autoturism
				TB 61	16.000	vehicul greu nesolicitat



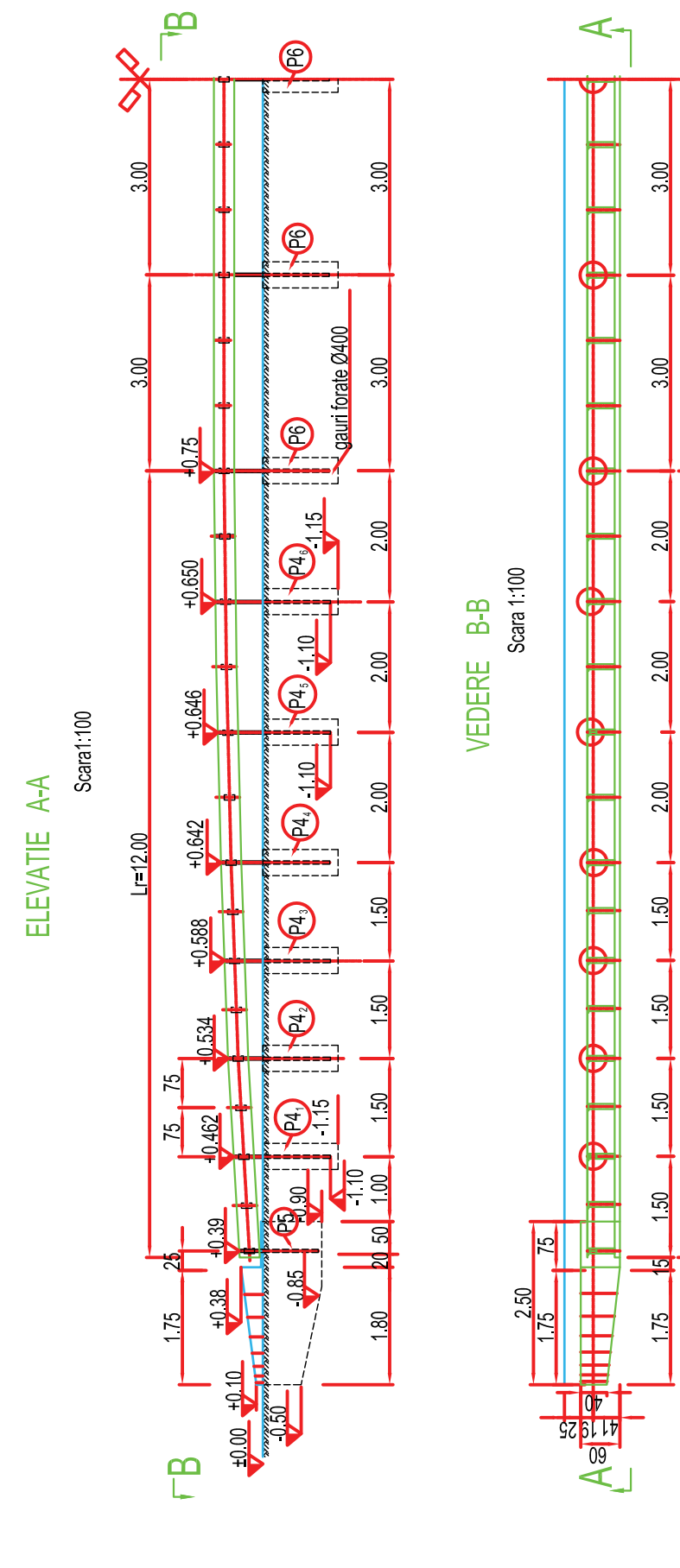
Dimensiuni nominale	Tolerante
H	+8
A	+6
E	+5
M	+1
M <sup>2</sup>	-5
d	+2
r	+6
ø	+1
ø	+2
x	+3
g	-3

Fonta normala de table = 171

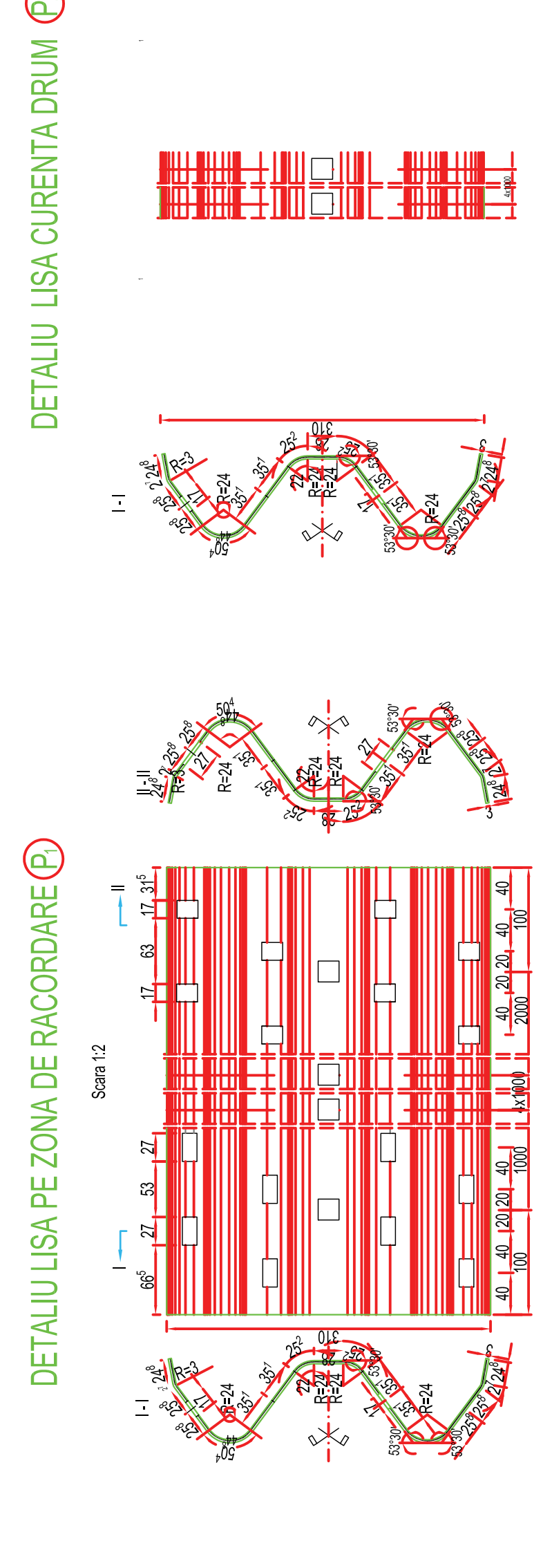
C12/15  
C20/25  
C25/30



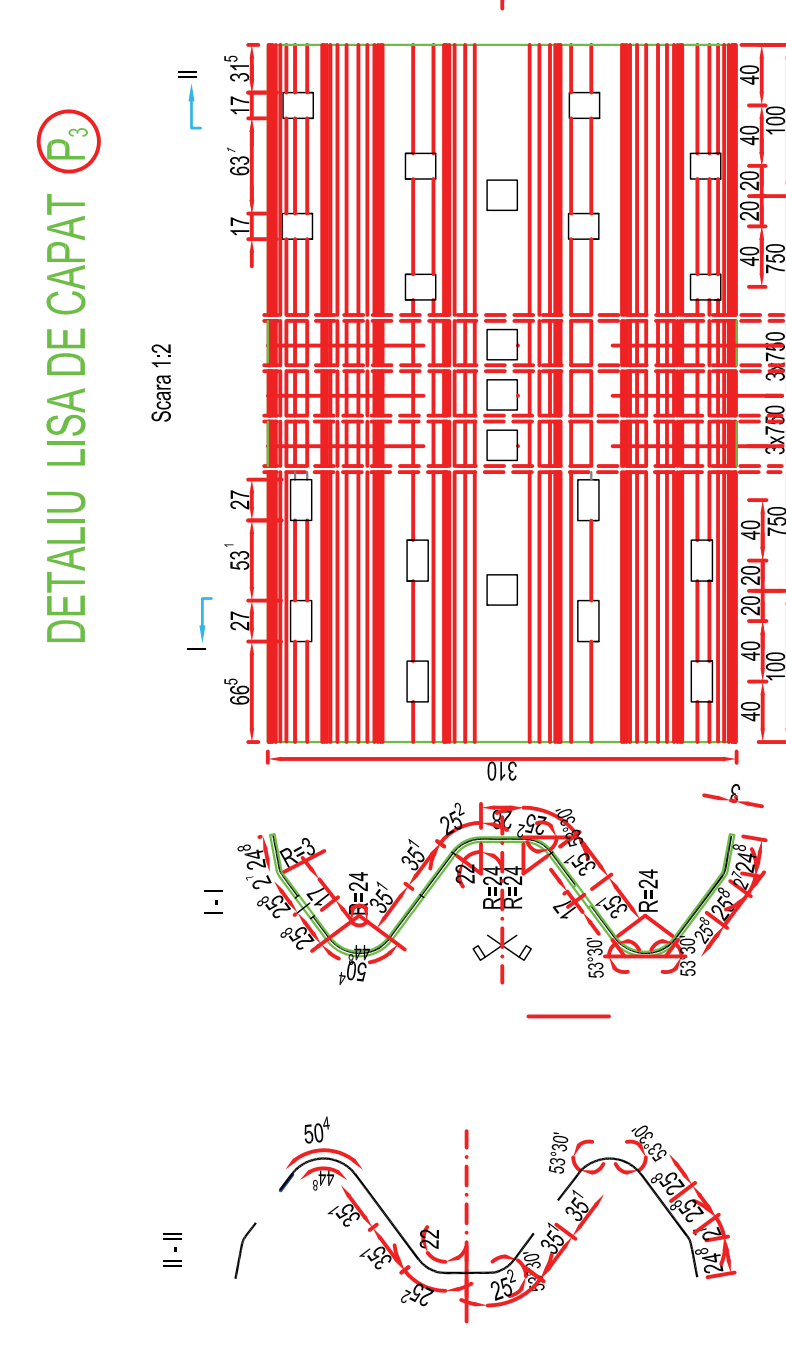
**PARAPET DE SIGURANTA DEFORMABIL TIP H1 (GREU) AMPLASAT PE DRUM**



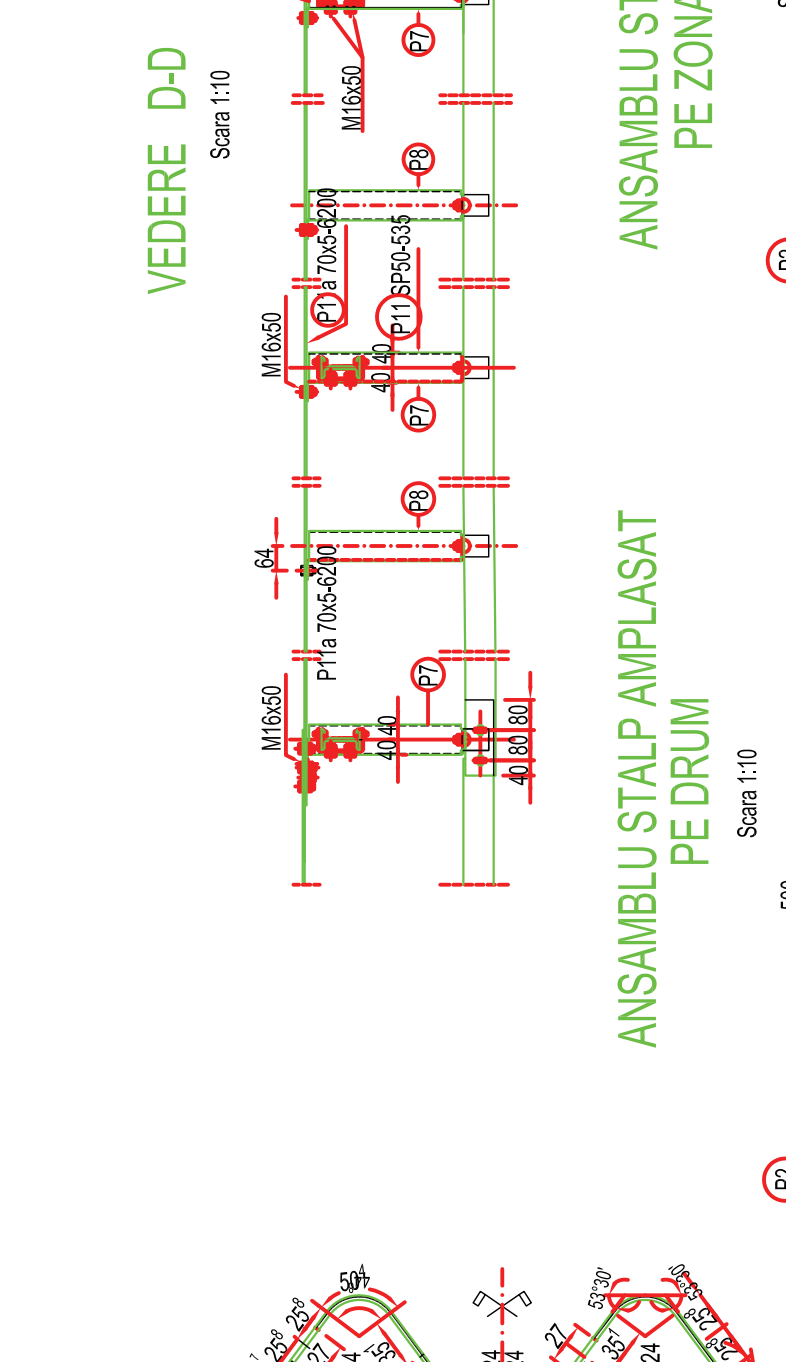
**DETALIU LISA PE ZONA DE RACORDARE (P1)**



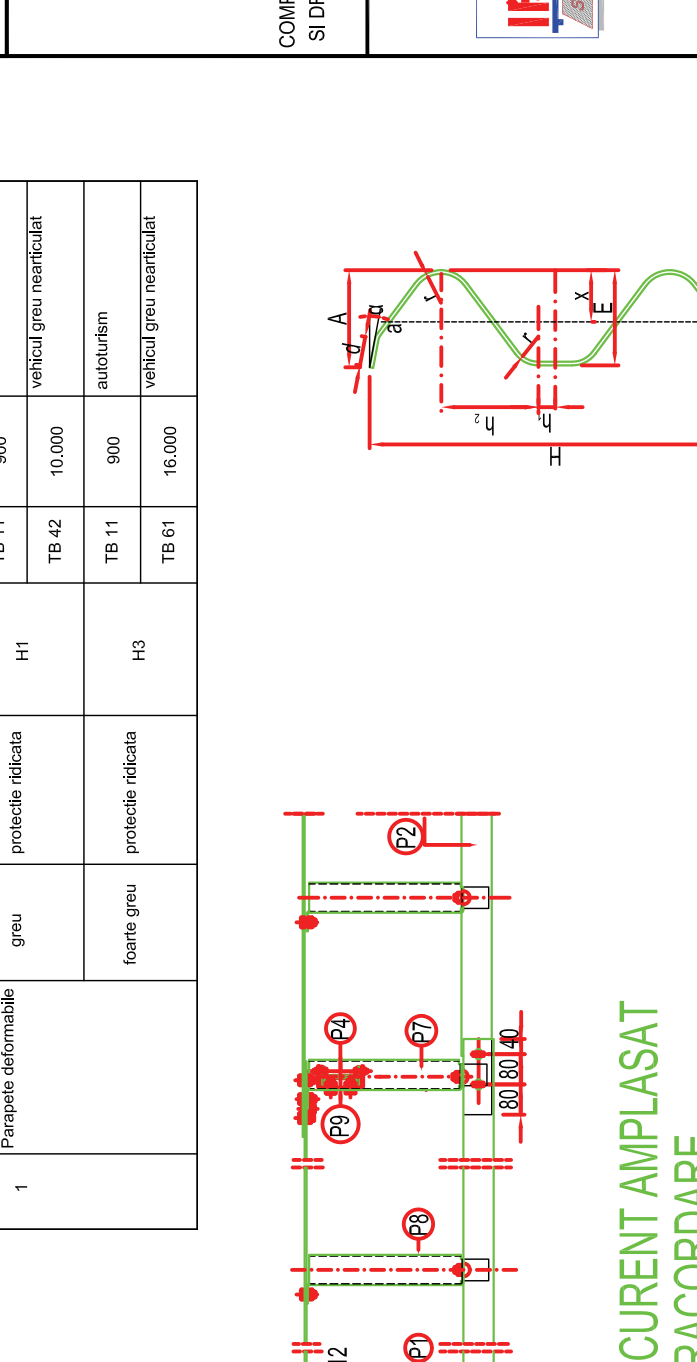
**DETALIU LISA DE CAPAT (P3)**



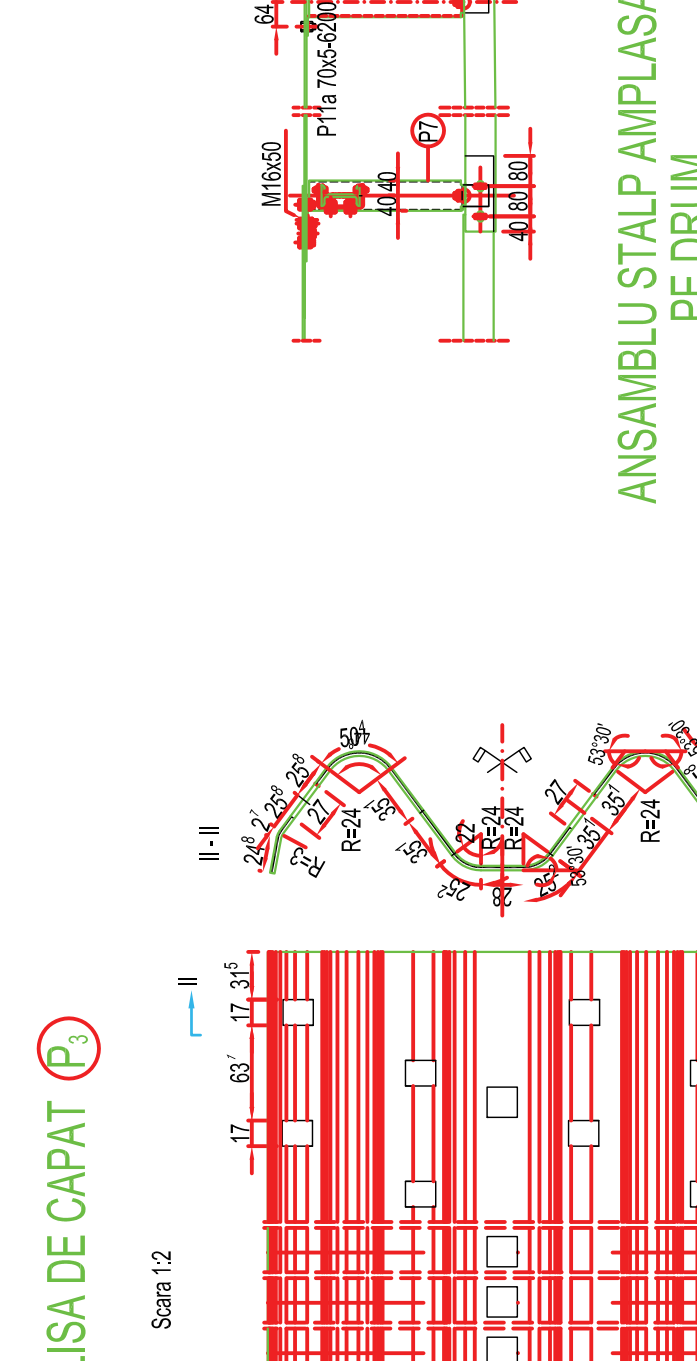
**DETALIU LISA CURENTA DRUM (P2)**



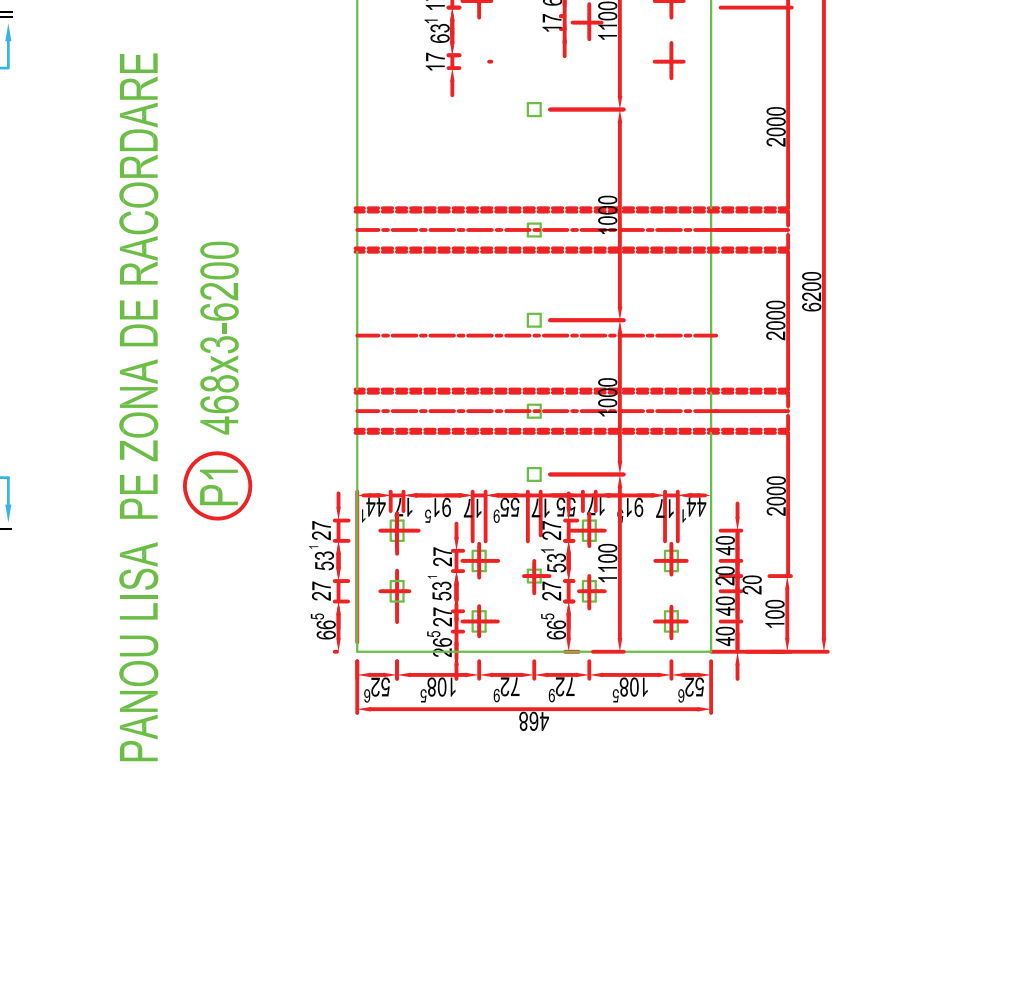
**VEDERE B-B**



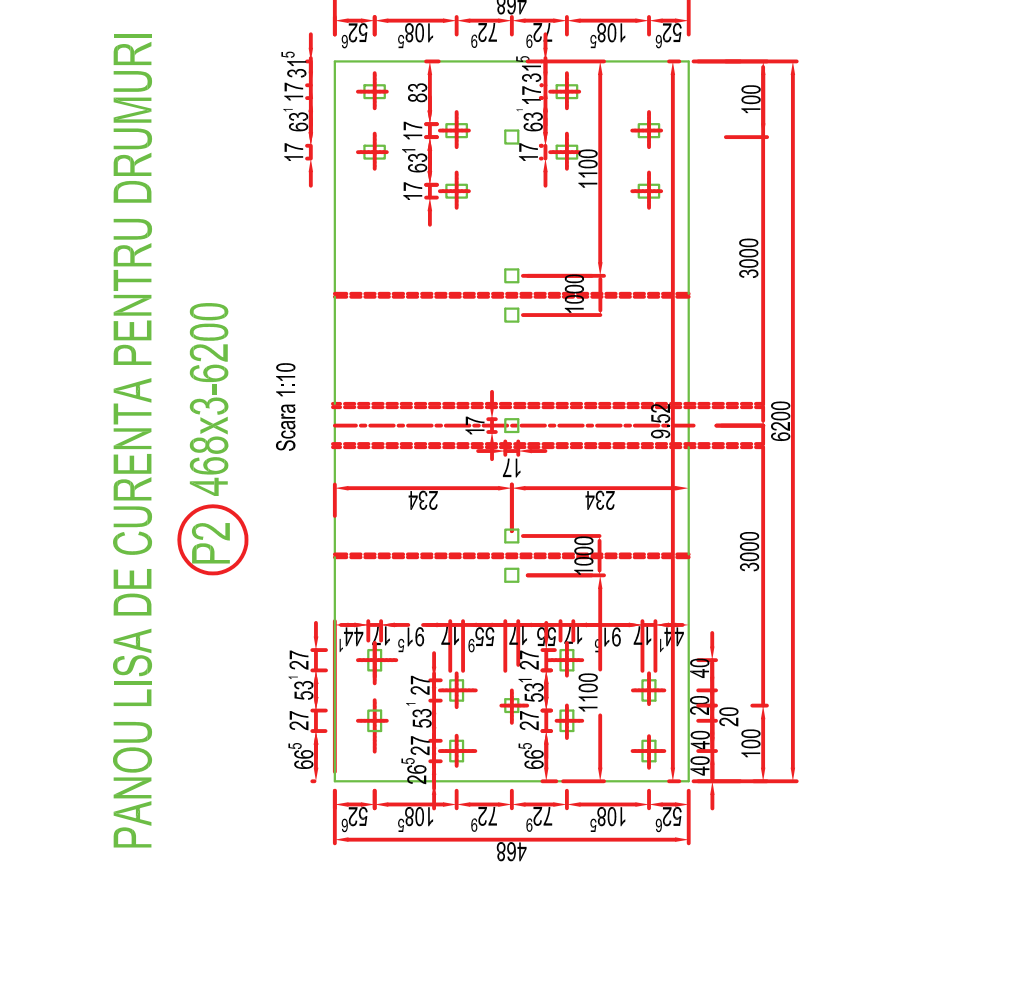
**VEDERE D-D**



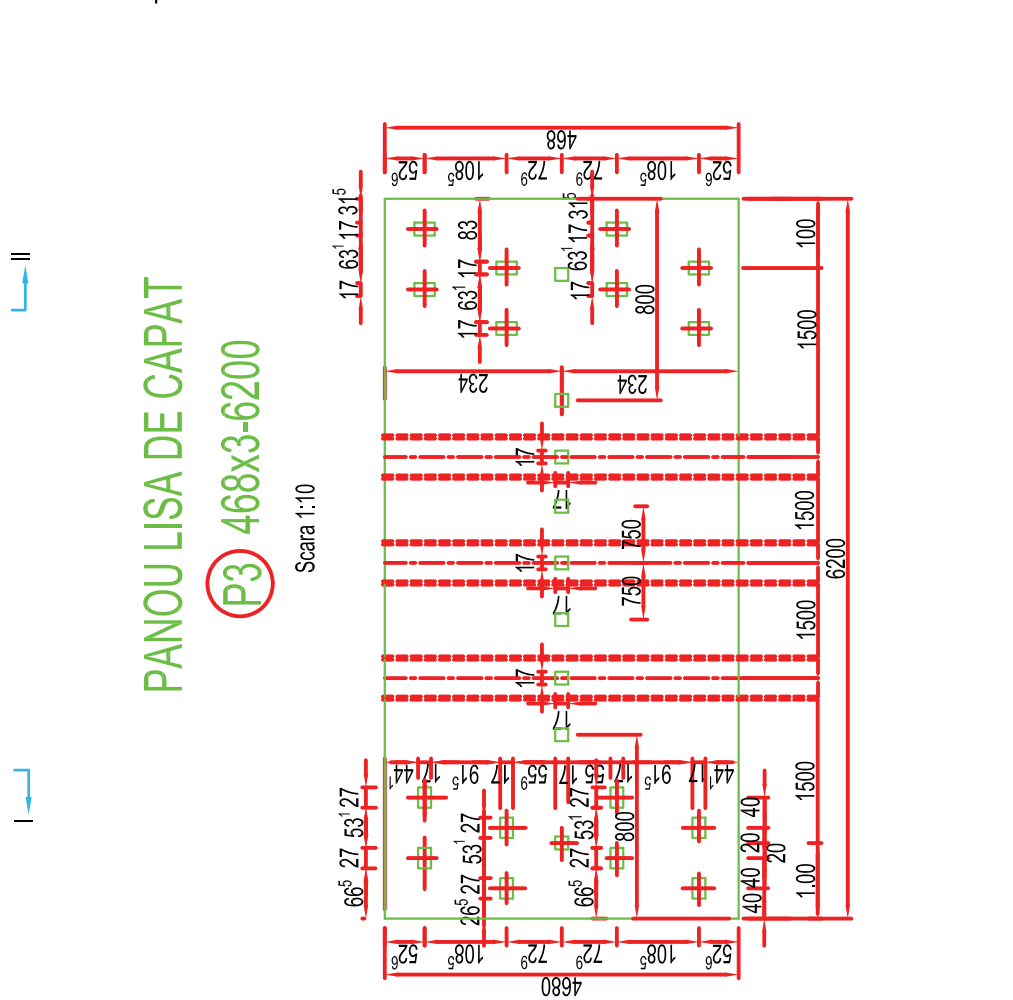
**PANOU LISA PE ZONA DE RACORDARE (P1)**



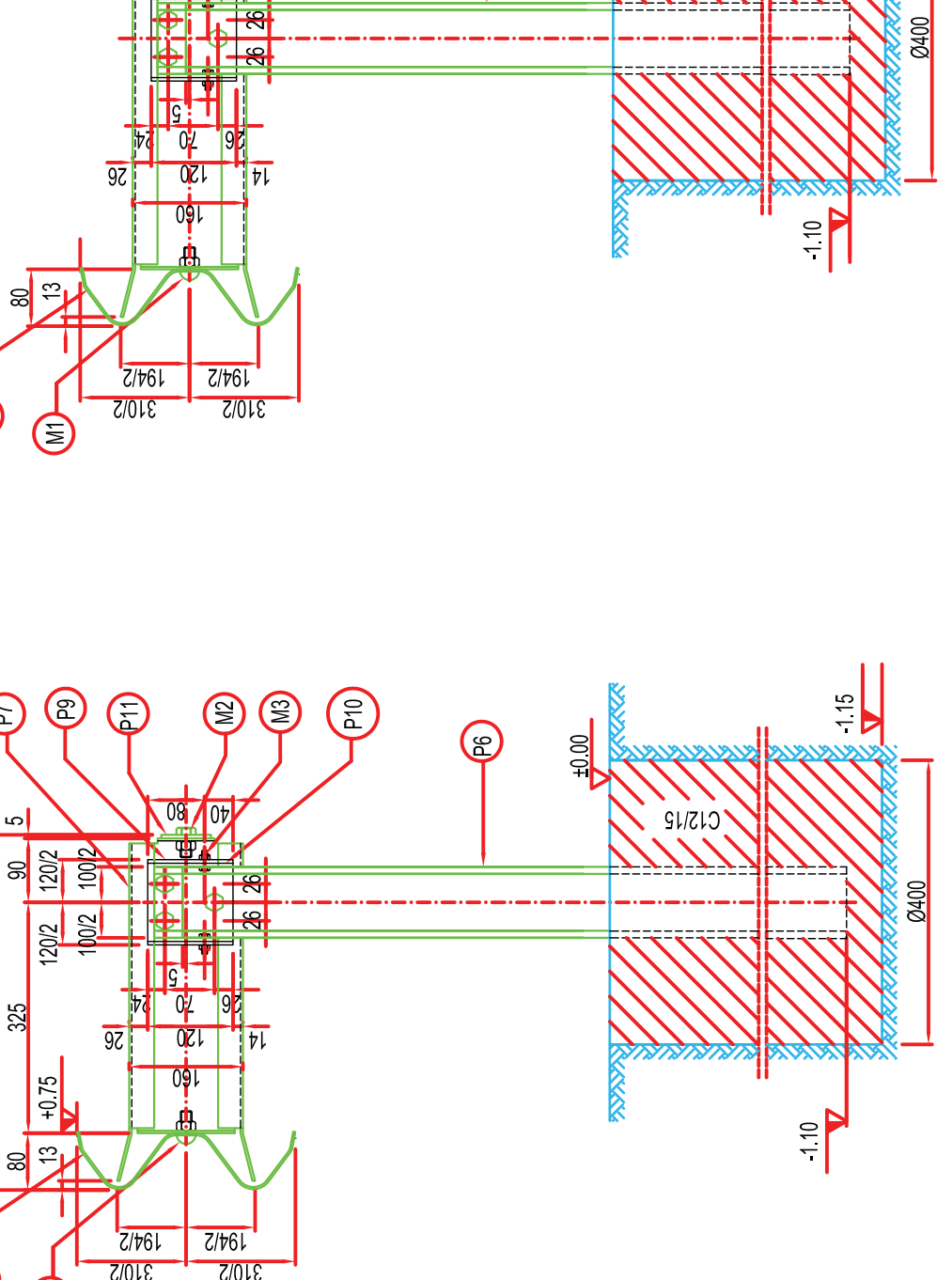
**PANOU LISA DE CURENTA PENTRU DRUMURI (P2)**



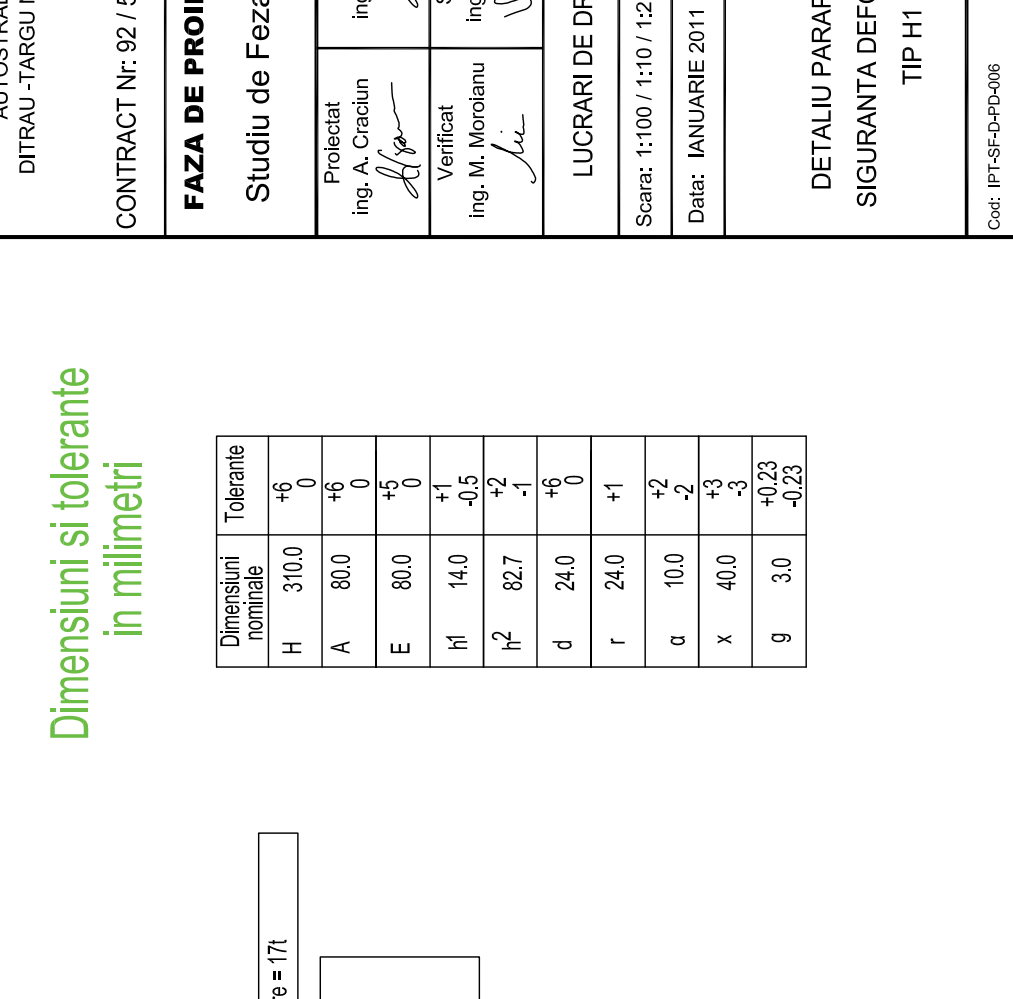
**PANOU LISA DE CAPAT (P3)**



**ANSAMBLU STALP AMPLASAT PE DRUM**



**ANSAMBLU STALP CURENT AMPLASAT PE ZONA DE RACORDARE**



**Dimensiuni si tolerante in milimetri**

Dimensiuni nominale	Tolerante
H	+8
A	+6
E	+5
M	+1
M <sup>2</sup>	-5
d	+2
r	+6
ø	+1
ø	+2
x	+3
g	-3

Fonta normala de table = 171

C12/15  
C20/25  
C25/30

