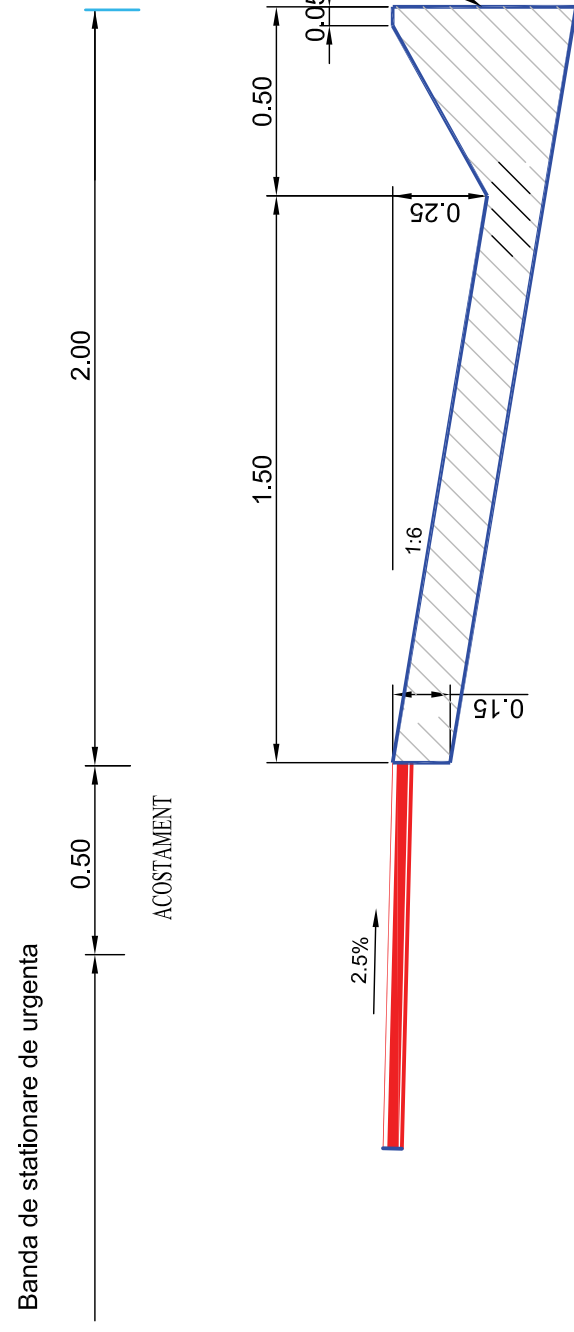
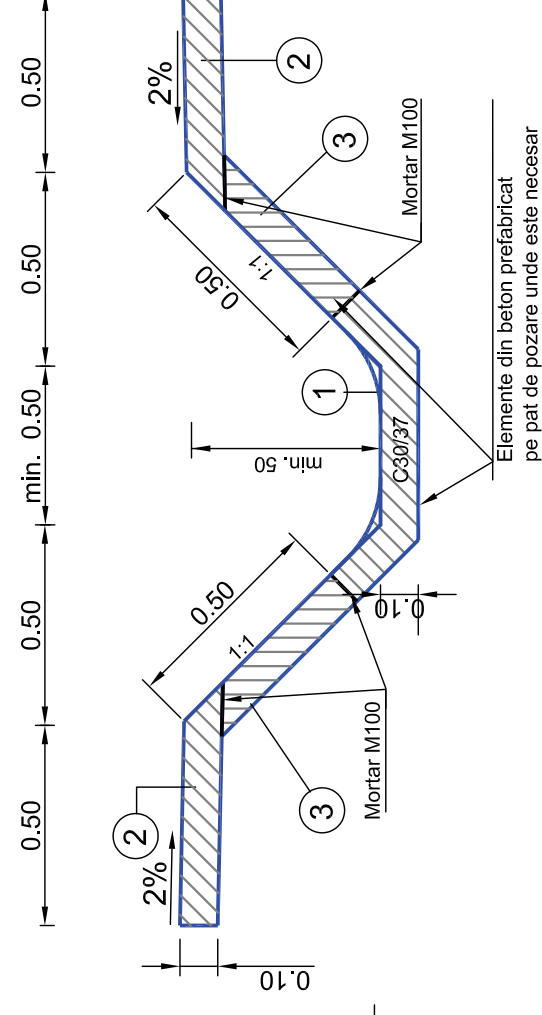


DETALIU RIGOLA DEBLEU

Sc. 1:20

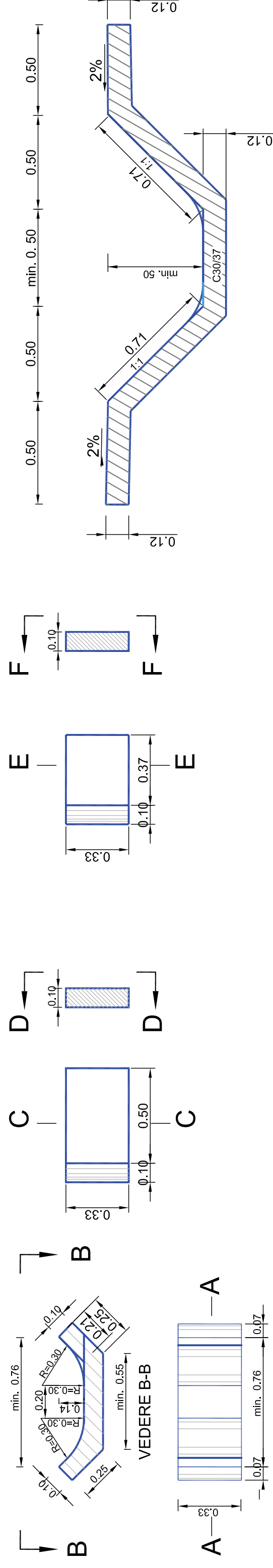


Sc. 1:20



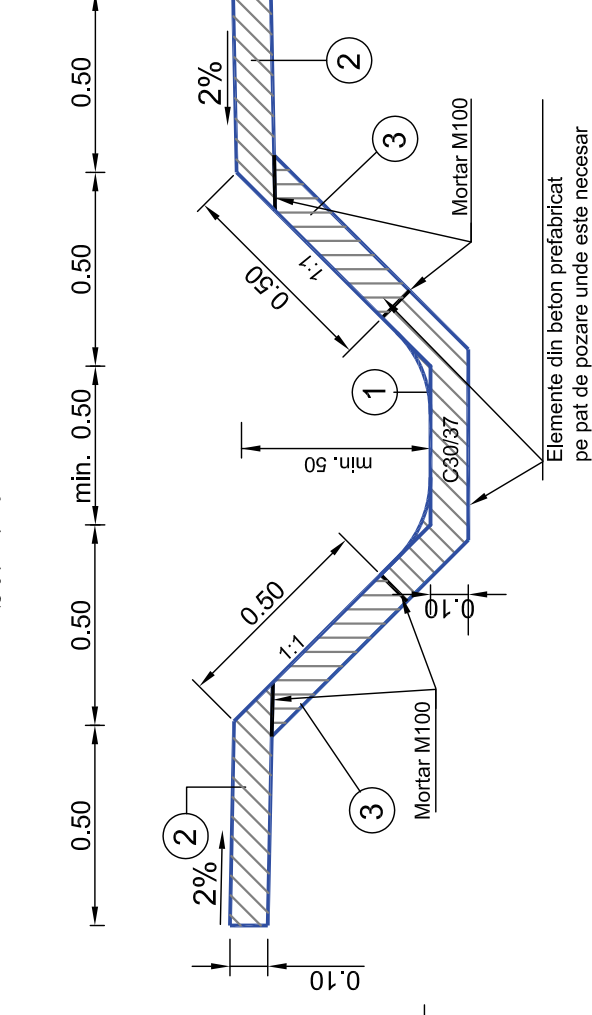
DETALIU SANT MONOLIT DE LA BAZA RAMBLEULUI

Sc. 1:20



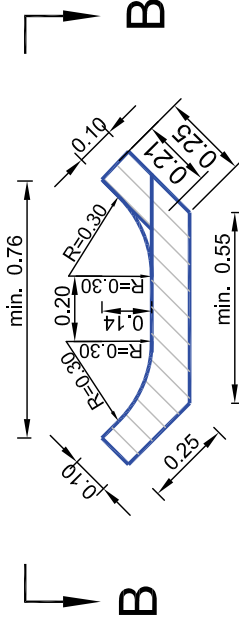
DETALIU SANT PREFABRICAT DE LA BAZA RAMBLEULUI

Sc. 1:20

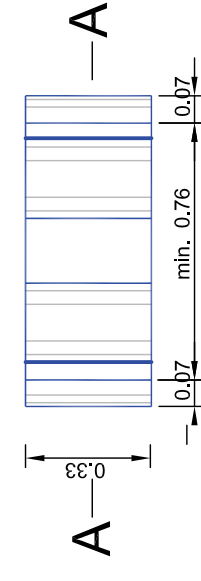


ELEMENT TIP ①

SECTIUNE A-A

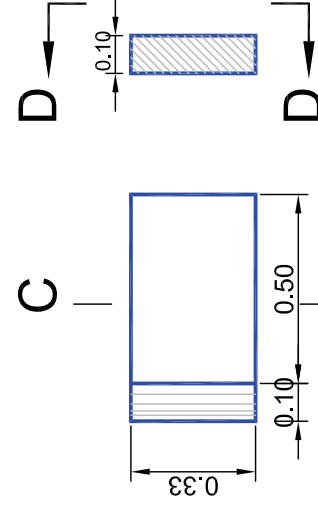


VEDERE B-B



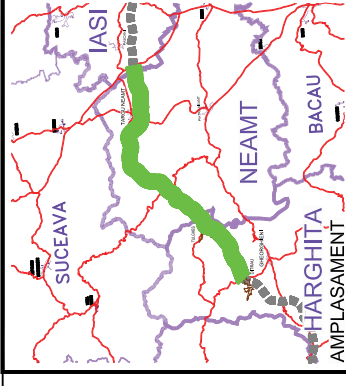
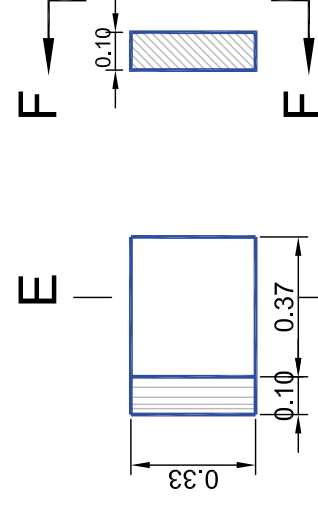
ELEMENT TIP ②

SECTIUNE C-C



ELEMENT TIP ③

SECTIUNE F-F

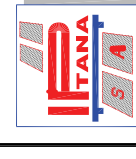


BENEFICIAR



COMPANIA NATIONALA DE AUTOSTRAZI SI DRUMURI NATIONALE DIN ROMANIA

PROIECTANT



IPTANA S.A.

INVESTITIA

AUTOSTRADA
DITRAU - TARGU NEAMT

CONTRACT Nr: 92 / 58623 / 4275

FAZA DE PROIECTARE

Studiu de Fezabilitate

Proiectat ing. A. Craciun	Desenat ing. A. Craciun
Verificat ing. M. Morolanu	Sef Proiect ing. V. Osman

LUCRARI DE DRUMURI

Scara: 1:20

Data: IANUARIE 2011

DETALIU RIGOLA DEBLEU
SI SANT PREFABRICAT
DE LA BAZA RAMBLEULUI

Cod: IPT-SF-D-PD-011 Rev. 0