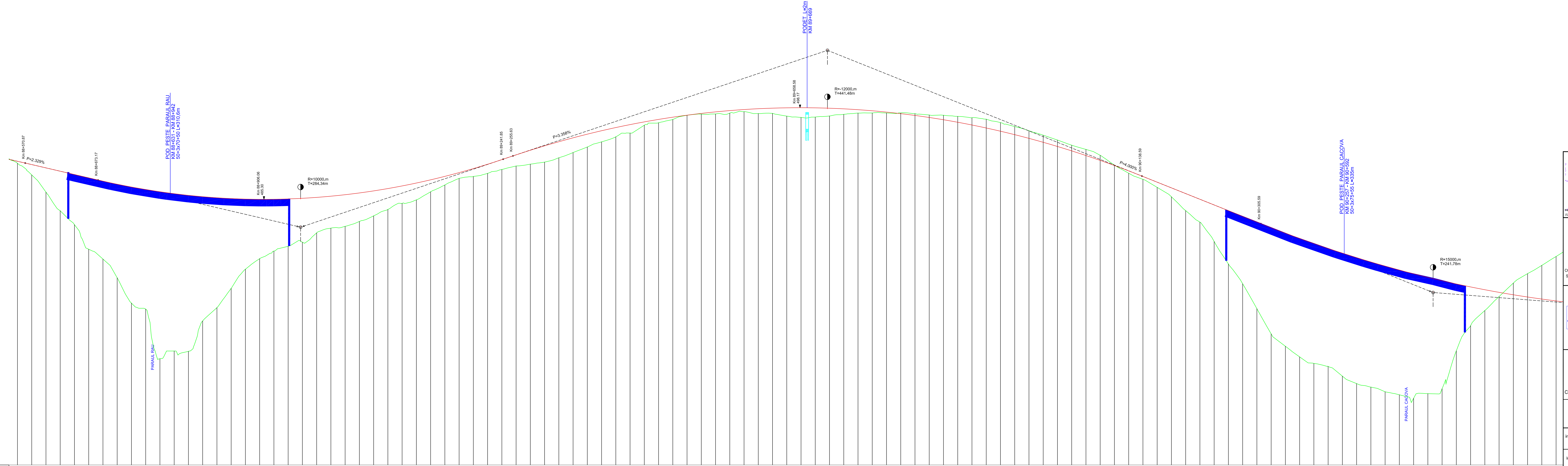


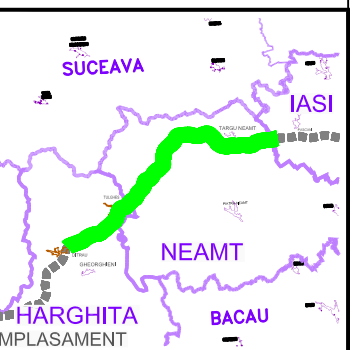
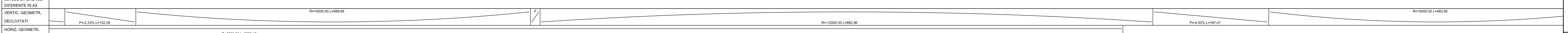
DITRAU ←

TARGU NEAMT →



DATUM LEVEL=448  
PL-REF=448

CHAINAGE	88+500.00	88+510.00	88+520.00	88+530.00	88+540.00	88+550.00	88+560.00	88+570.00	88+580.00	88+590.00	88+600.00	88+610.00	88+620.00	88+630.00	88+640.00	88+650.00	88+660.00	88+670.00	88+680.00	88+690.00	88+700.00	88+710.00	88+720.00
KILOMETRAJ	88+500.00	88+510.00	88+520.00	88+530.00	88+540.00	88+550.00	88+560.00	88+570.00	88+580.00	88+590.00	88+600.00	88+610.00	88+620.00	88+630.00	88+640.00	88+650.00	88+660.00	88+670.00	88+680.00	88+690.00	88+700.00	88+710.00	88+720.00
GRADE LEVELS	490.36	490.64	490.30	490.18	489.50	488.31	487.72	487.03	486.08	484.91	483.59	482.29	481.00	479.74	478.51	477.32	476.17	475.06	474.00	473.00	472.00	471.00	470.00
COTE PROIECT	490.36	490.64	490.30	490.18	489.50	488.31	487.72	487.03	486.08	484.91	483.59	482.29	481.00	479.74	478.51	477.32	476.17	475.06	474.00	473.00	472.00	471.00	470.00
GROUND LEVELS	488.31	488.72	489.15	489.60	490.00	490.40	490.80	491.20	491.60	492.00	492.40	492.80	493.20	493.60	494.00	494.40	494.80	495.20	495.60	496.00	496.40	496.80	497.20
COTE TEREN	488.31	488.72	489.15	489.60	490.00	490.40	490.80	491.20	491.60	492.00	492.40	492.80	493.20	493.60	494.00	494.40	494.80	495.20	495.60	496.00	496.40	496.80	497.20
LEVELS DIFFERENCE	0.05	0.08	0.10	0.12	0.15	0.20	0.25	0.30	0.35	0.40	0.45	0.50	0.55	0.60	0.65	0.70	0.75	0.80	0.85	0.90	0.95	1.00	
DIFERENTE IN AX																							
VERTIC. GEOMETR.																							
DECLIVITATI																							
HORIZ. GEOMETR.																							
AMENAJARE PLAN																							



**BENEFICIAR**

COMPANIA NATIONALA DE AUTOSTRAZI  
SI DRUMURI NATIONALE DIN ROMANIA

**PROIECTANT**

**IPTANA S.A.**

**INVESTITIA**

AUTOSTRADA  
DITRAU - TARGU NEAMT

CONTRACT Nr: 92 / 58623 / 4275

**FAZA DE PROIECTARE**

Studiu de Fezabilitate

Proiectat Ing. M. Georgescu	Desenat Ing. R. Georgescu
Verificat Ing. M. Moroiu	Self Proiect Ing. V. Osman

**LUCRARI DE DRUMURI**

Scara: 1:2000 / 1:200

Data: IANUARIE 2011

**PROFIL LONGITUDINAL**  
KM 88+560 - KM 90+720

Cat: IPT-SF-D-PL-042 Rev. 0