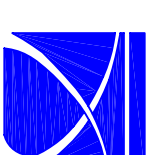
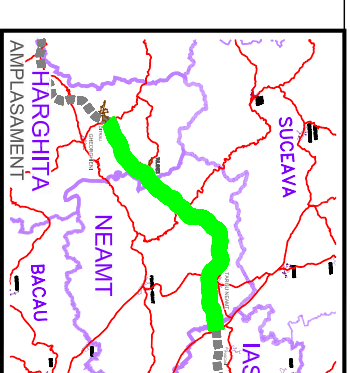
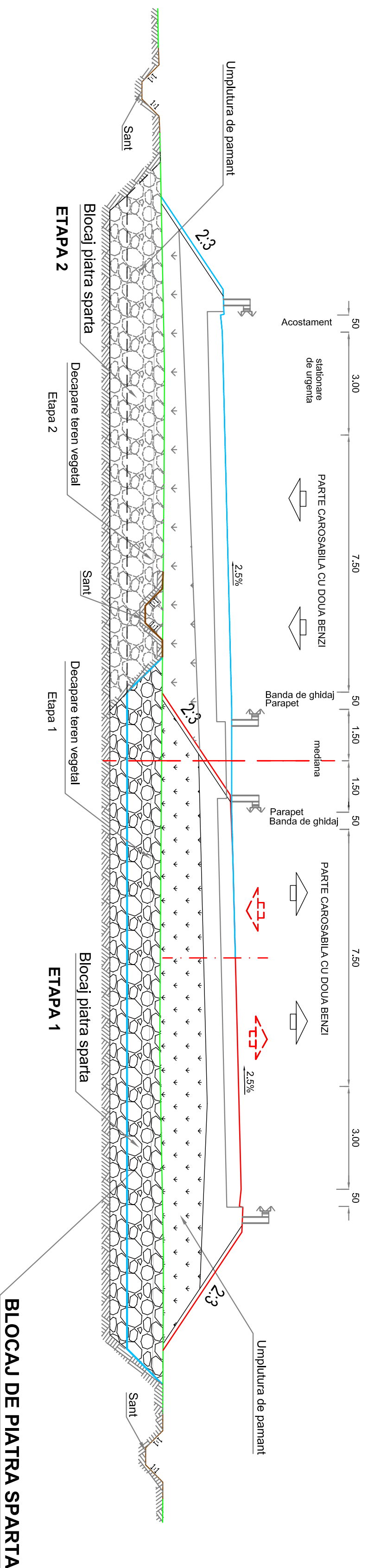


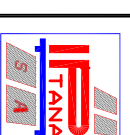
BLOCAJ DE PIATRA SPARTA

Sc 1:100



COMPANIA NATIONALA DE AUTOSTRAZI
SI DRUMURI NATIONALE DIN ROMANIA

PROIECTANT



IPTANA S.A.

INVESTITIA

AUTOSTRADA
DITRAU - IARGU NEAMT

CONTRACT Nr.: 92 / 58623 / 4275

FAZA DE PROIECTARE

Studiu de Fezabilitate

Proiectat	Desinat
Ing. G. SAVVA <i>G. Savva</i>	Ing. G. SAVVA <i>G. Savva</i>
Verificat Ing. I. LUNGU <i>I. Lungu</i>	Sef Proiect Ing. V. DSMAN <i>V. Dsmann</i>

LUCRARI CONSOLIDARE

Scara: 1:100

Data: IANUARIE 2011

PROFIL TRANSVERSAL TIP

BLOCAJ DE PIATRA SPARTA

Cod: IPT-SF-C-PT1402

Rev. 0