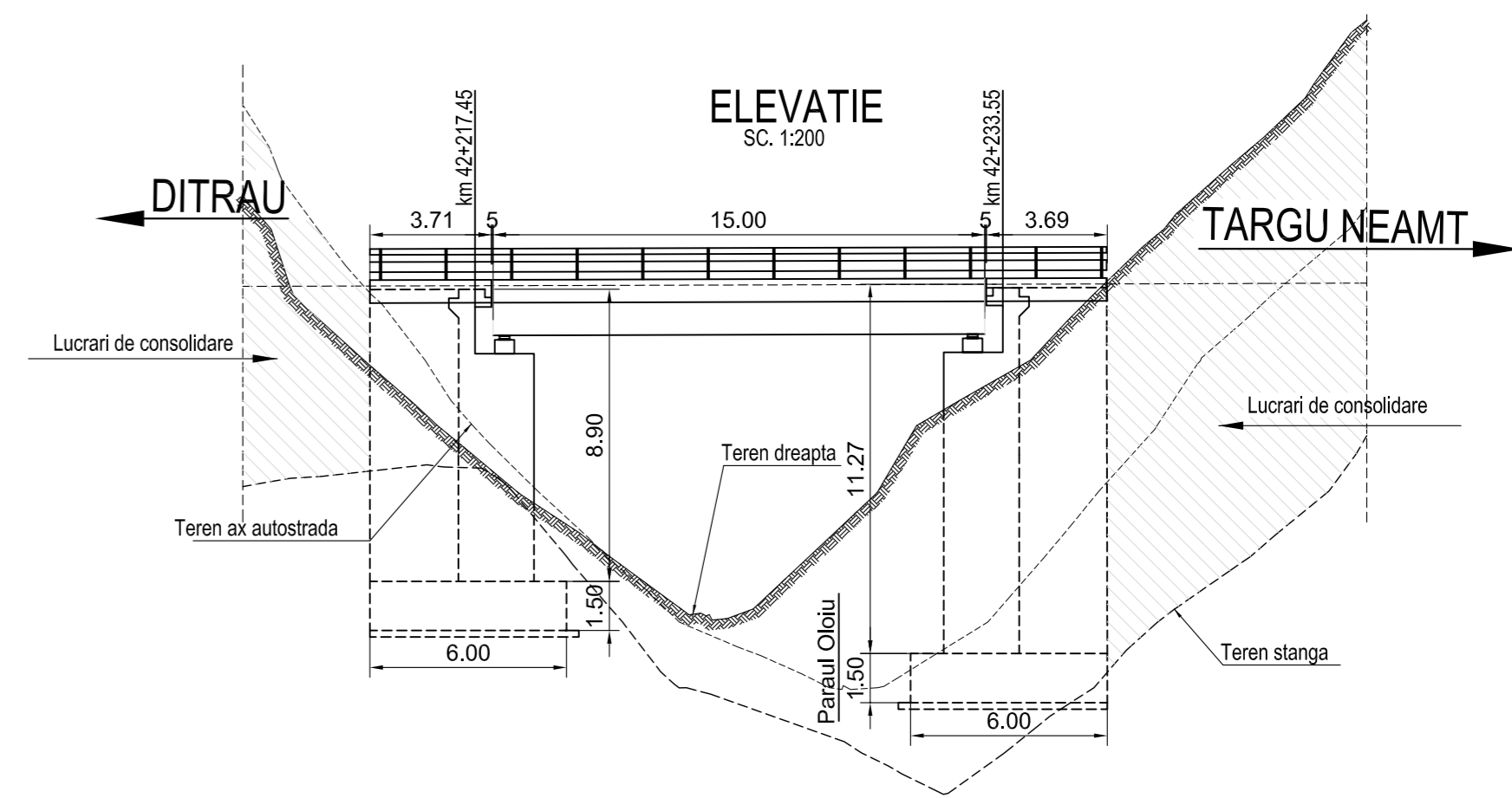
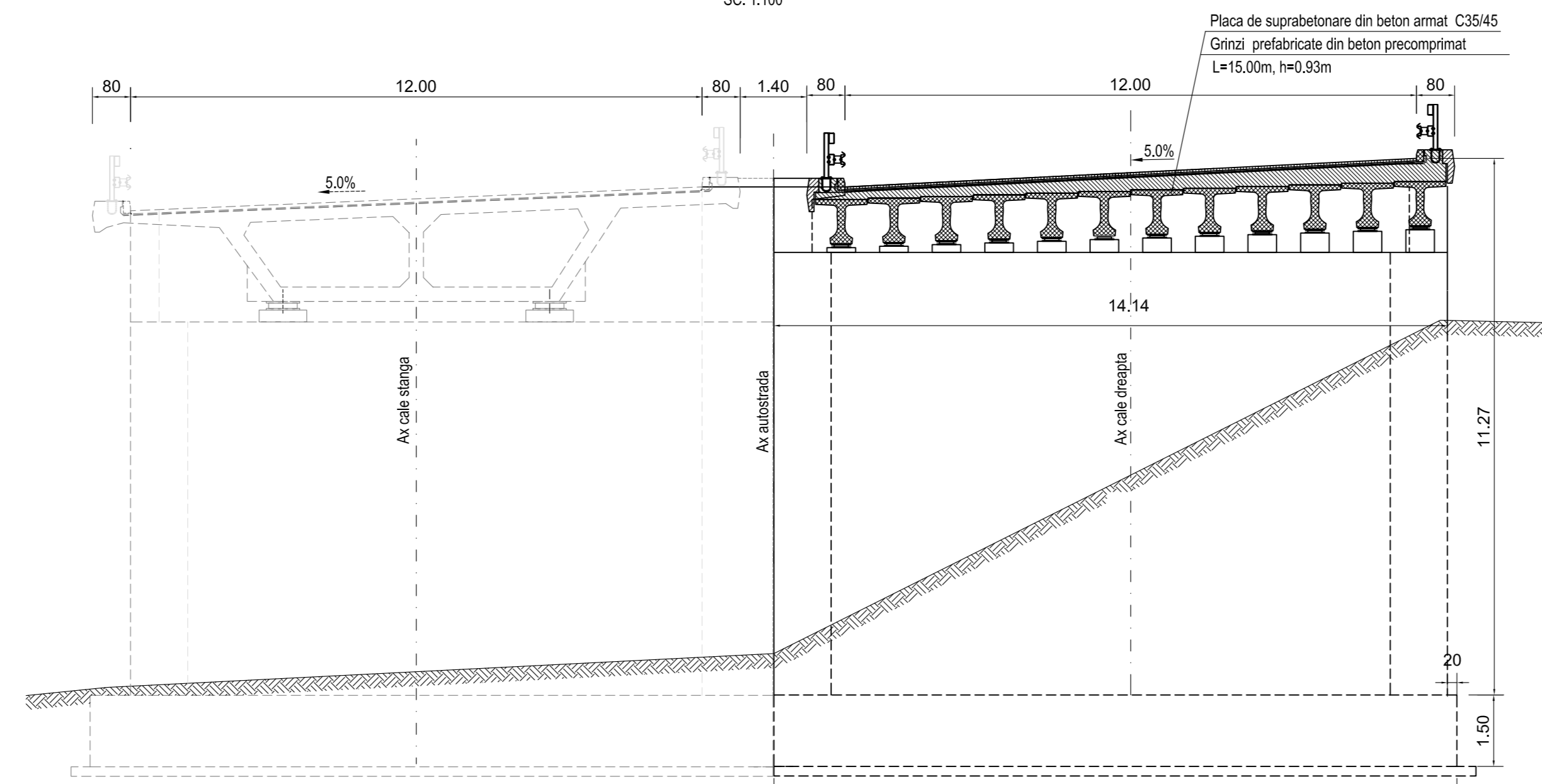
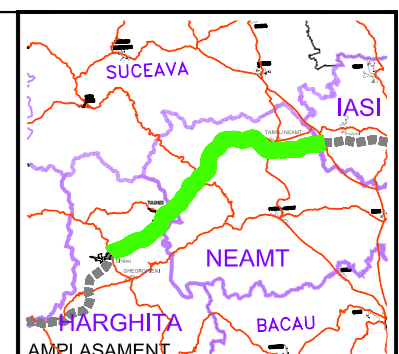
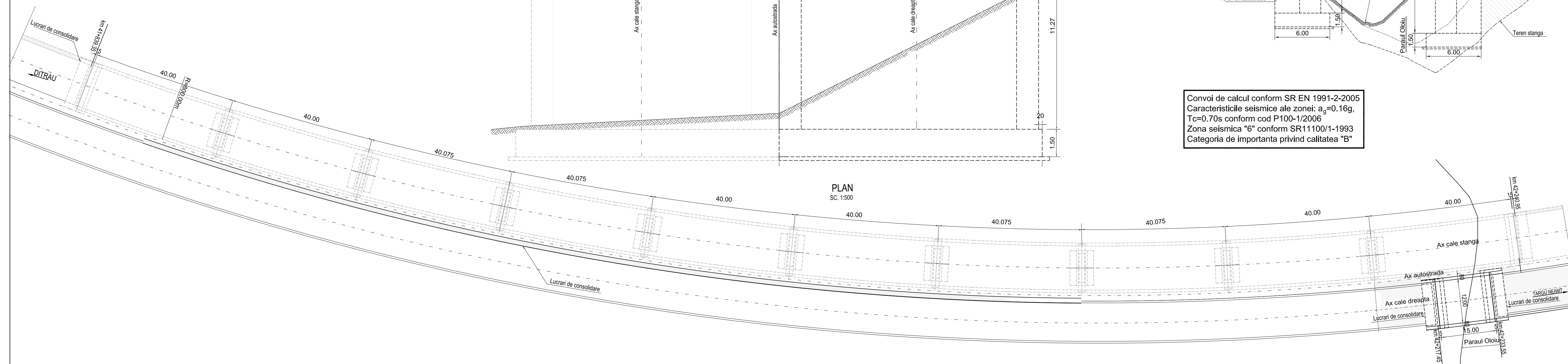


SECTIUNE TRANSVERSALA  
SC. 1:100



Convoi de calcul conform SR EN 1991-2-2005  
Caracteristicile seismice ale zonei:  $a_g=0.16g$ ,  
 $T_c=0.70s$  conform cod P100-1/2006  
Zona seismică "6" conform SR11100/1-1993  
Categoria de importanta privind calitatea "B"



BENEFICIAR

COMPANIA NATIONALA DE AUTOSTRAZI  
SI DRUMURI NATIONALE DIN ROMANIA

PROIECTANT

IPTANA S.A.

INVESTITIA  
AUTOSTRADA  
DITRAU - TARGU NEAMT

CONTRACT Nr: 92 / 58623 / 4275

FAZA DE PROIECTARE  
Studiu de Fezabilitate

Proiectat Ing. A. Sandu	Desenat Ing. A. Sandu
Verificat Ing. N. Avram	Sef Proiect Ing. V. Osman

LUCRARI DE PODURI

Scara: 1:100 1:200 1:500

Data: FEBRUARIE 2011

DISPOZITIE GENERALA  
POD  
Km 42+217.45-Km 42+233.55

Cod: IPT-SF-P-DG-069 Rev. 0