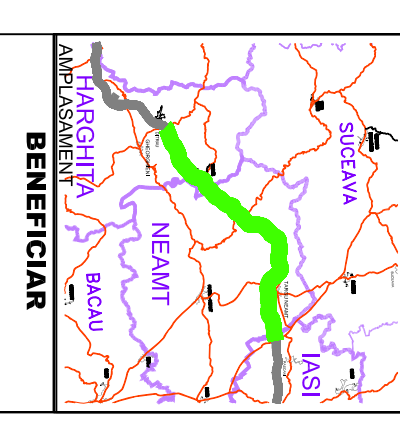
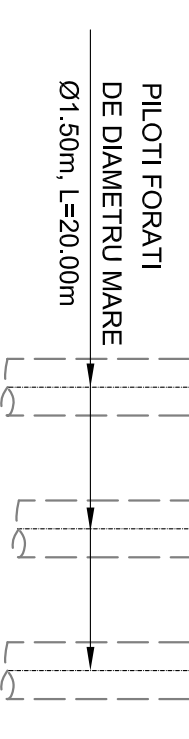
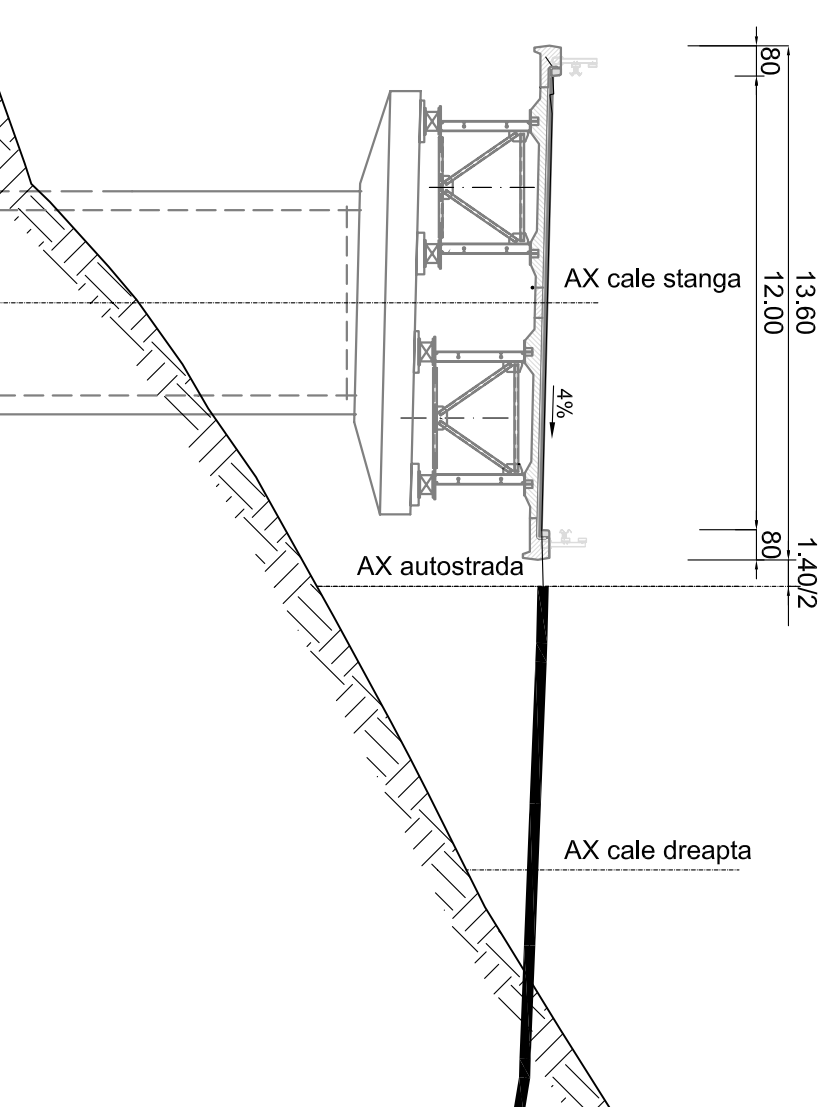




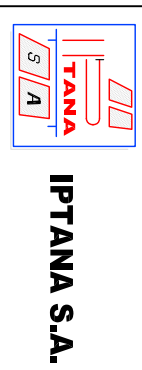
SECTIUNE TRANSVERSALA B - B

SC. 1:200



COMPANIA NATIONALA DE AUTOSTRAZI
SI DRUMURI NATIONALE DIN ROMANIA

PROIECTANT



IPTANA S.A.

INVESTITIA

AUTOSTRADA
DITRAU - TARGU NEAMT

CONTRACT NR: 92 / 58623 / 4275

FAZA DE PROIECTARE

Studiu de Fezabilitate

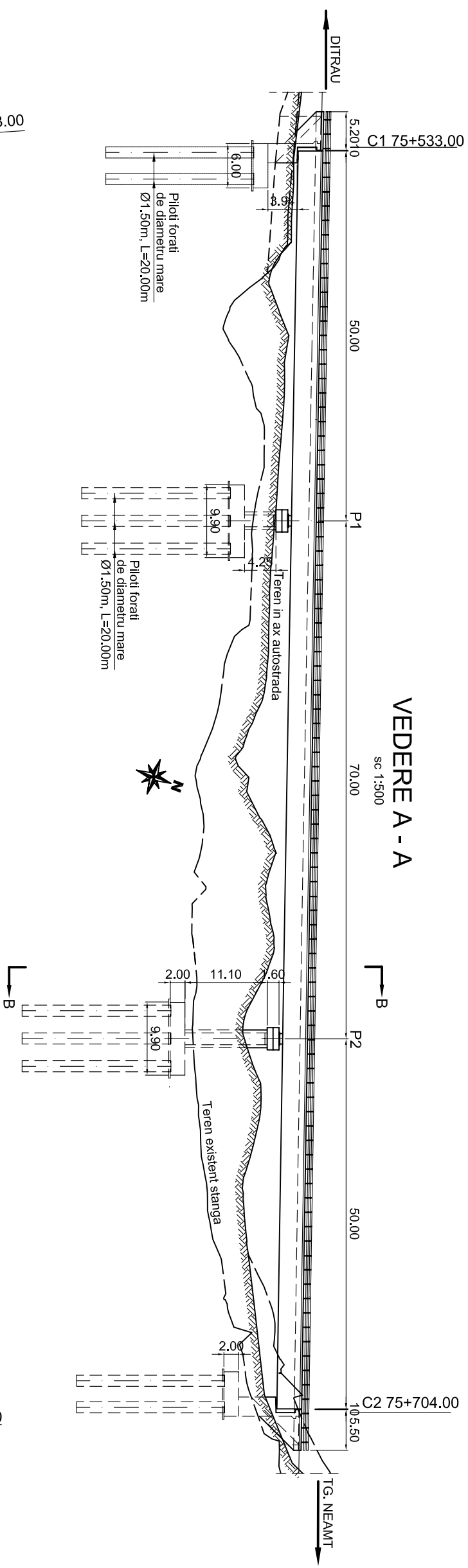
| | |
|-------------------------------|------------------------------|
| Proiectat Ing. I.S. Stolan | Desenat Ing. I.S. Stolan |
| Verificat Ing. C. Gădeea | Șef Proiect Ing. V. Osman |

LUCRARI DE PODURI

Scara: 1:200, 1:500
Data: IANUARIE 2011

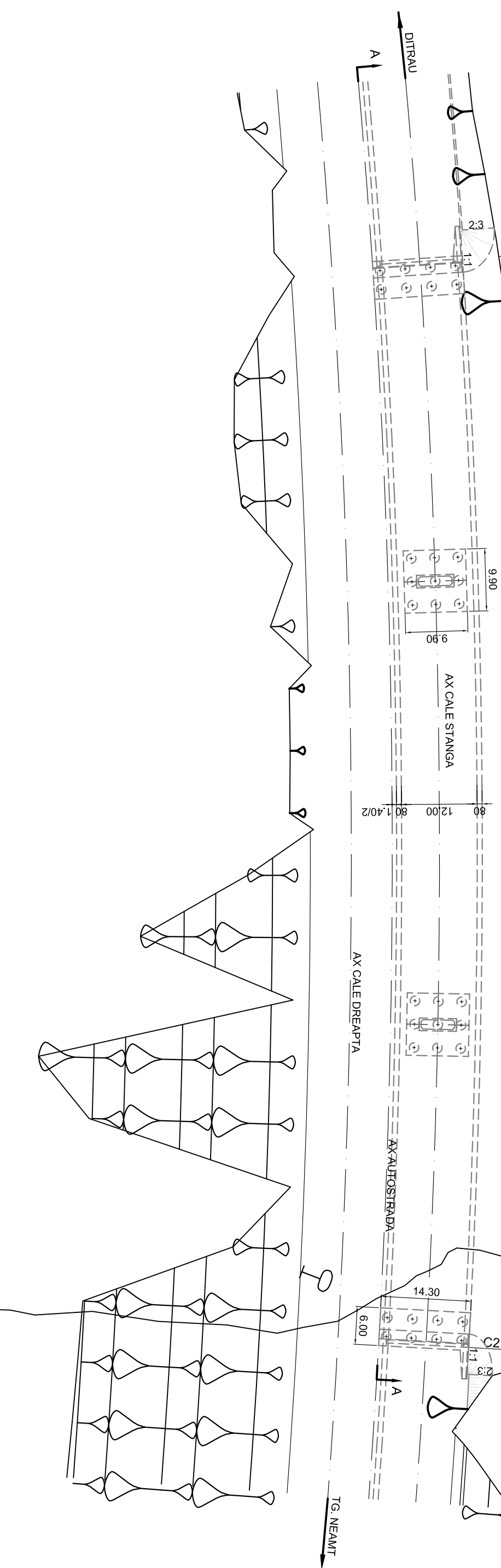
POD
CALE STANGA
km 75+533.00 + km75+704.00
DISPOZITIE GENERALA

Cod: IPT-SF-P-06-138
Rev.: 0



VEDERE PLANA

sc. 1:500



CONVOI DE CALCUL CONFORM SR EN 1991-2-2:2005
ZONA SEISMICA : 6 - CONFORM SR 11100/1-93
CARACTERISTILE SEISMICE ALE ZONEI CONFORM COD P100-1/2006
ag=0.2g; T_g =0.7sec
9 - accelerația gravitațională
CATEGORIA DE IMPORTANȚA PRIVIND CALITATEA : "B"