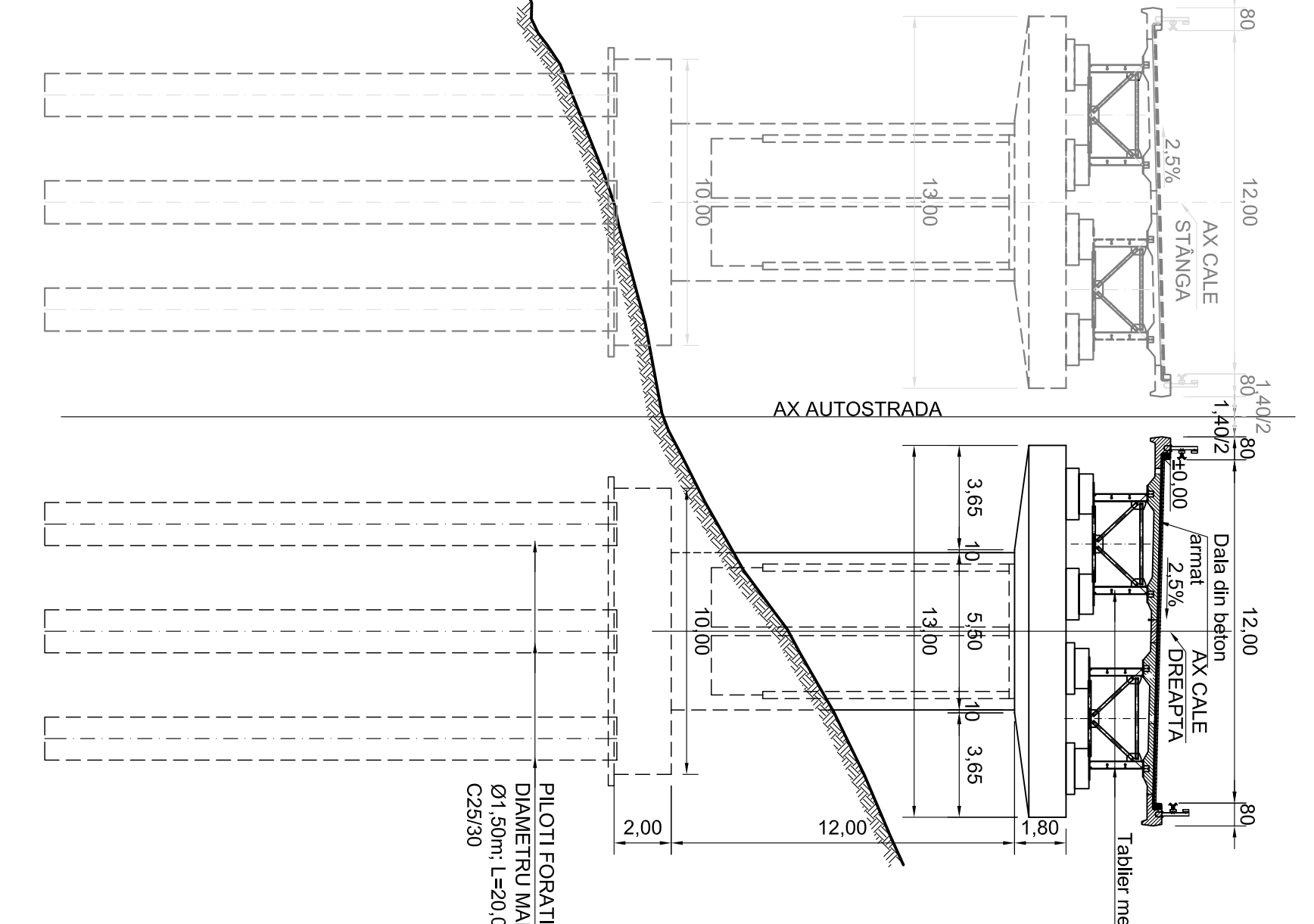
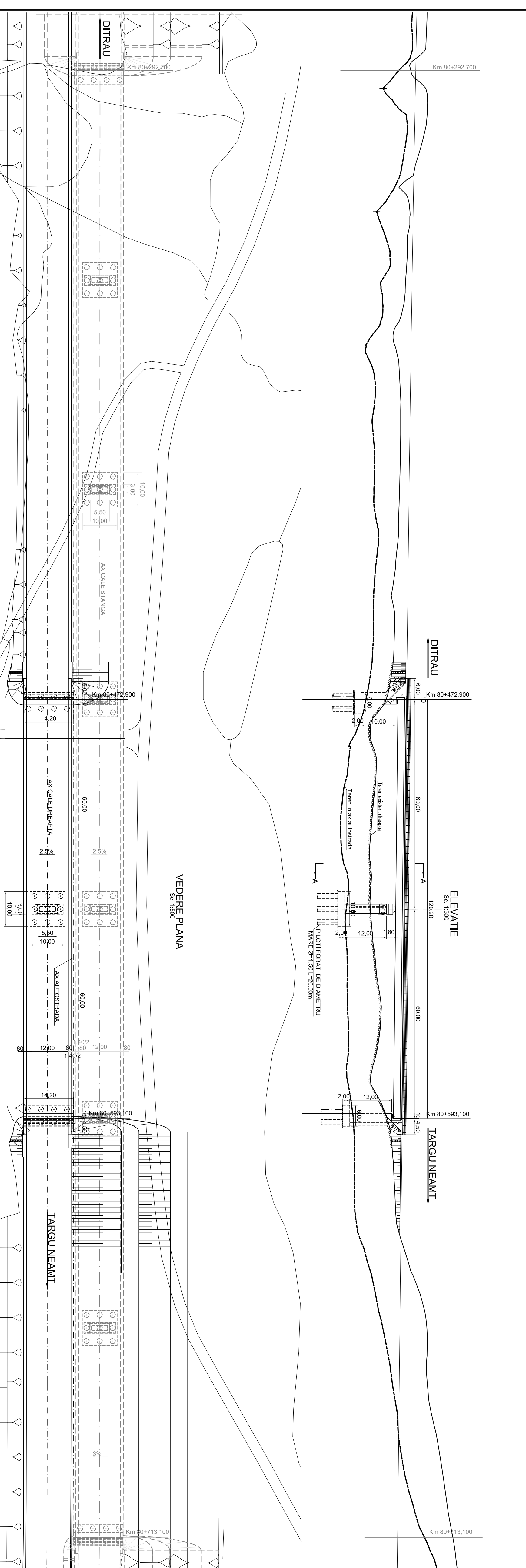
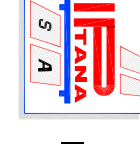
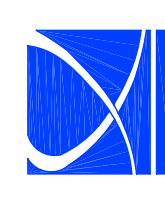
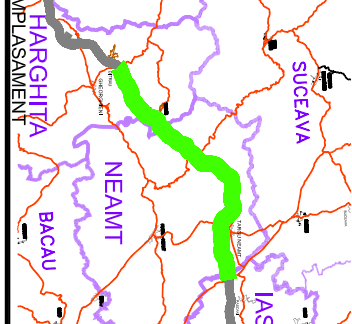


# SECTIUNE TRANSVERSALA A - A

Sc. 1:200



CONVOI DE CALCUL CONFORM SR EN 1991-2-2005  
 ZONA SEISMICA : 6 - CONFORM SR 11100/1-93  
 CARACTERISTILE SEISMICE ALE ZONEI CONFORM COD P100-1/2006  
 ag=0.2g, Tc=0.7sec  
 ag - accelerația terenului de proiectare  
 g - accelerația gravitațională  
 CATEGORIA DE IMPORTANȚĂ PRIVIND CALITATEA : "B"

 <p><b>IPTANA S.A.</b></p>		 <p><b>BENEFICIAR</b></p>		 <p><b>TARGHITA / NEAMT / BACAU / IASI</b></p>
<p><b>INVESTITIA</b>                  AUTOSTRADA                  DITRAU -TARGU NEAMT</p>		<p><b>PROIECTANT</b>                  COMPANIA NATIONALA DE AUTOSTRAZI                  SI DRUMURI NATIONALE DIN ROMANIA</p>		<p><b>FAZA DE PROIECTARE</b>                  Studiu de Fezabilitate</p>
<p>Proiectat                  Ing. C. Radu</p>	<p>Desnat                  th. L.M. Marinescu</p>	<p>CONTRACT NR: 92 / 58623 / 4275</p>		
<p>Verificat                  Ing. C. Galdea</p>	<p>Seif Proiect                  Ing. V. Osman</p>	<p><b>LUCRARI DE POPURI</b></p>		
<p>Scara: 1:500; 1:200                  Data: IANUARIE 2011</p>		<p>DISPOZITIE GENERALA POD                  Km 80+472.900+Km 81+593.100</p>		
<p>Cod: IPTSR-PD-C-144</p>		<p>Rev.: 0</p>		