

# SECTIUNE TRANSVERSALA A-A

1:200

CALE STANGA

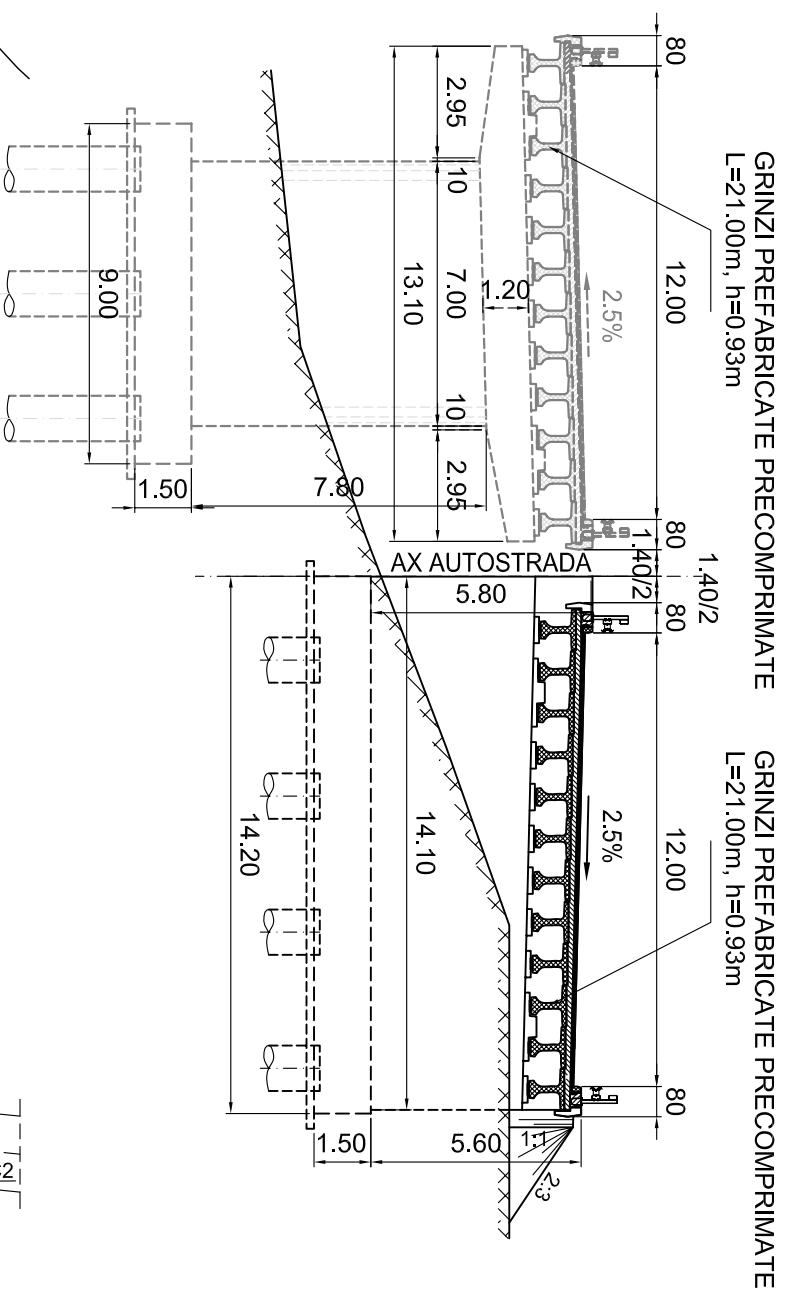
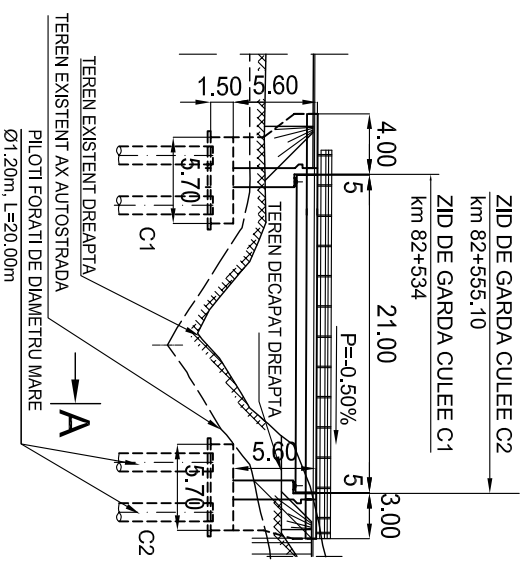
CALE DREAPTA

## ELEVATIE

1:500

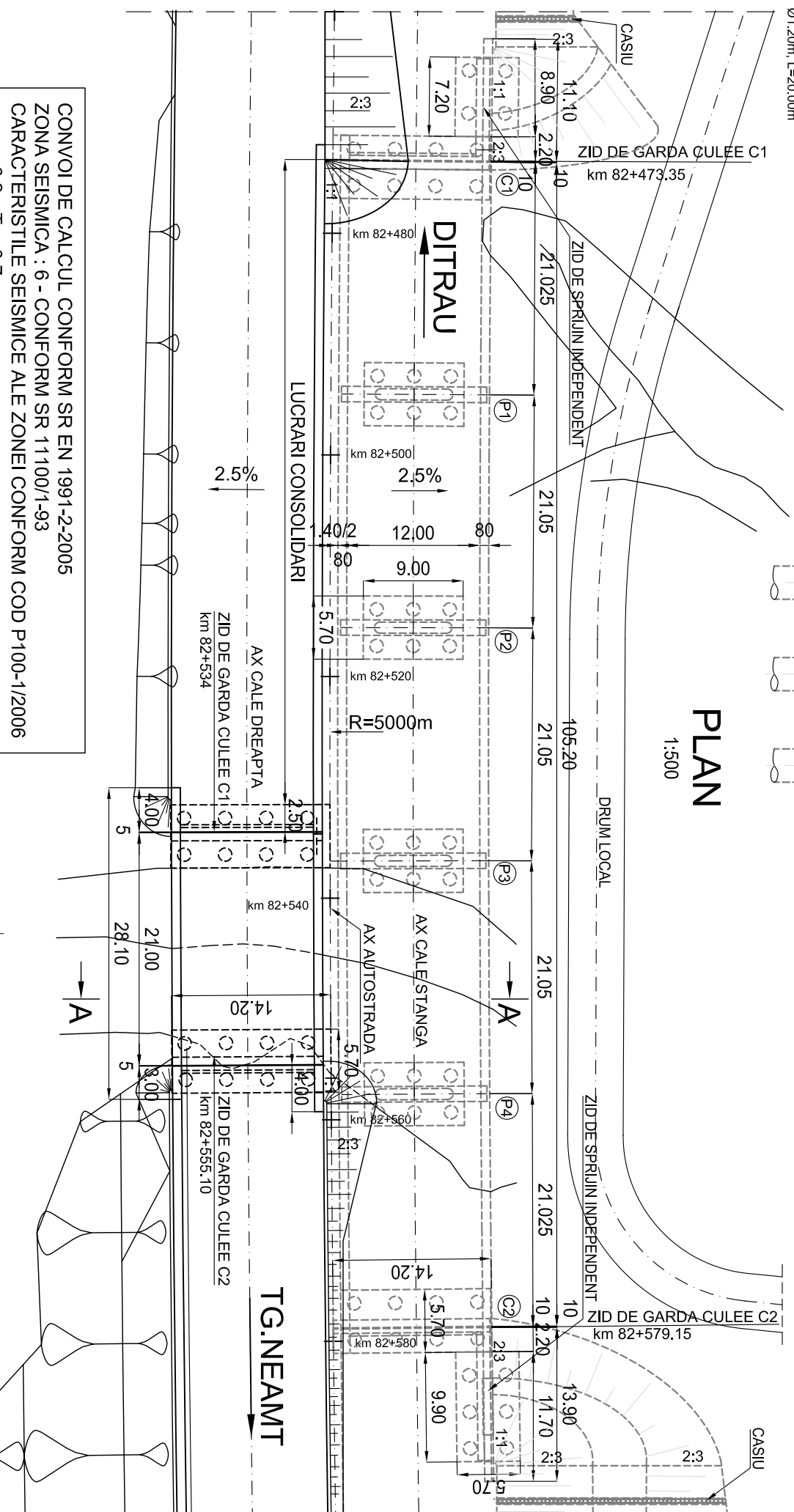
A

DITRAU TG.NEAMT

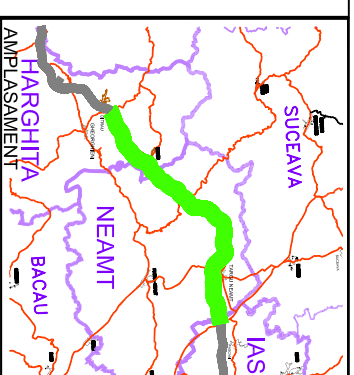


## PLAN

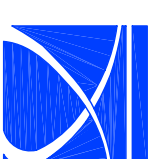
1:500



CONVOI DE CALCUL CONFORM SR EN 1991-2-2005  
 ZONA SEISMICA : 6 - CONFORM SR 11100/1-93  
 CARACTERISTILE SEISMICE ALE ZONEI CONFORM COD P100-1/2006  
 $a_g=0.2g$ ;  $T_c=0.7sec$   
 ag - acceleratia terenului de proiectare  
 g - acceleratia gravitationala  
 CATEGORIA DE IMPORTANTA PRIVIND CALITATEA : "B"

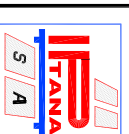


**BENEFICIAR**



COMPANIA NATIONALA DE AUTOSTRAZI  
 SI DRUMURI NATIONALE DIN ROMANIA

**PROIECTANT**



**IPTANA S.A.**

**INVESTITIA**

AUTOSTRADA  
 DITRAU -TARGU NEAMT

CONTRACT Nr: 92 / 58623 / 4275

**FAZA DE PROIECTARE**

Studiu de Fezabilitate

Proiectat ing. E. Ionita	Desenat ing. E. Ionita
Verificat ing. C. Gădea	Sef Proiect ing. V. Osman

**LUCRARI DE PODURI**

Scara: 1:500, 1:200  
 Data: IANUARIE 2011

DISPOZITIE GENERALA  
 POD km 82+534 - 82+555.10

Cod: IPT-SF-P-DG-147  
 Rev. 0