

**BENEFICIAR**



**IPTANA S.A.**

COMPANIA NATIONALA DE AUTOSTRAZI  
SI DRUMURI NATIONALE DIN ROMANIA

**PROIECTANT**

**INVESTITIA**

AUTOSTRADA  
DITRAU - TARGU NEAMT

CONTRACT NR: 92 / 58623 / 4275

**FAZA DE PROIECTARE**

Studiu de Fezabilitate

Proiectat Ing. E. Ionita	Desinat Ing. E. Ionita
Verificat Ing. C. Gădeea	Self-Proiect Ing. V. Osman

**LUCRARI DE PODURI**

Scara: 1:500, 1:200

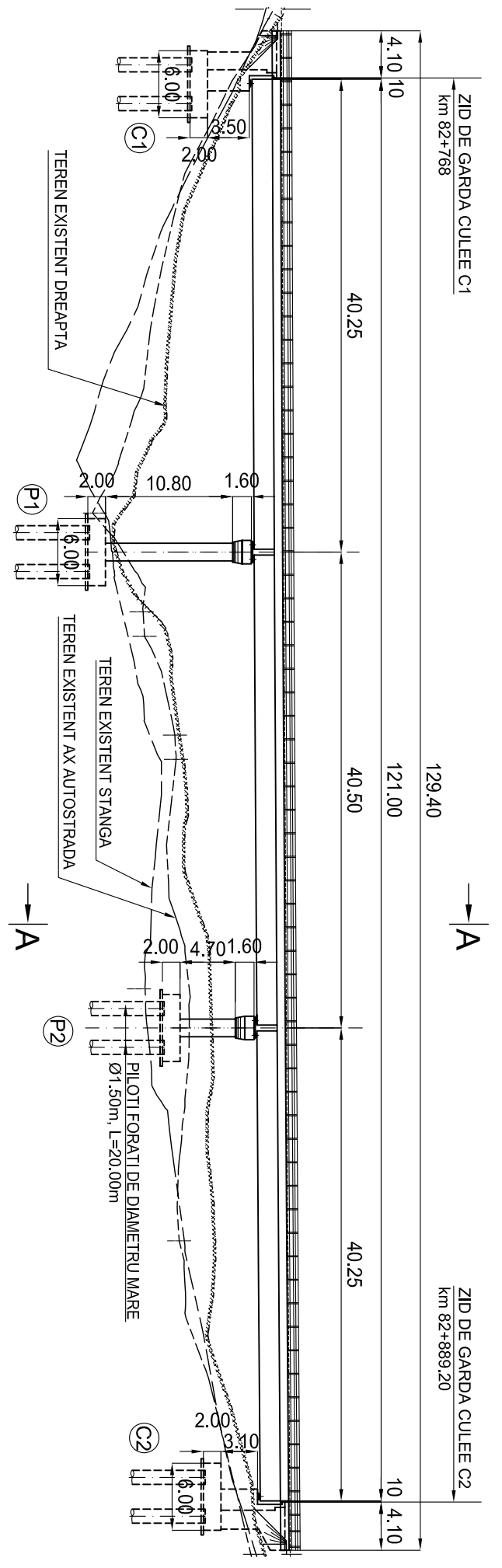
Data: IANUARIE 2011

DISPOZITIE GENERALA  
POD km 82+768 - 82+889.20

Cod: IPT-SF-P-DG-149 Rev. 0

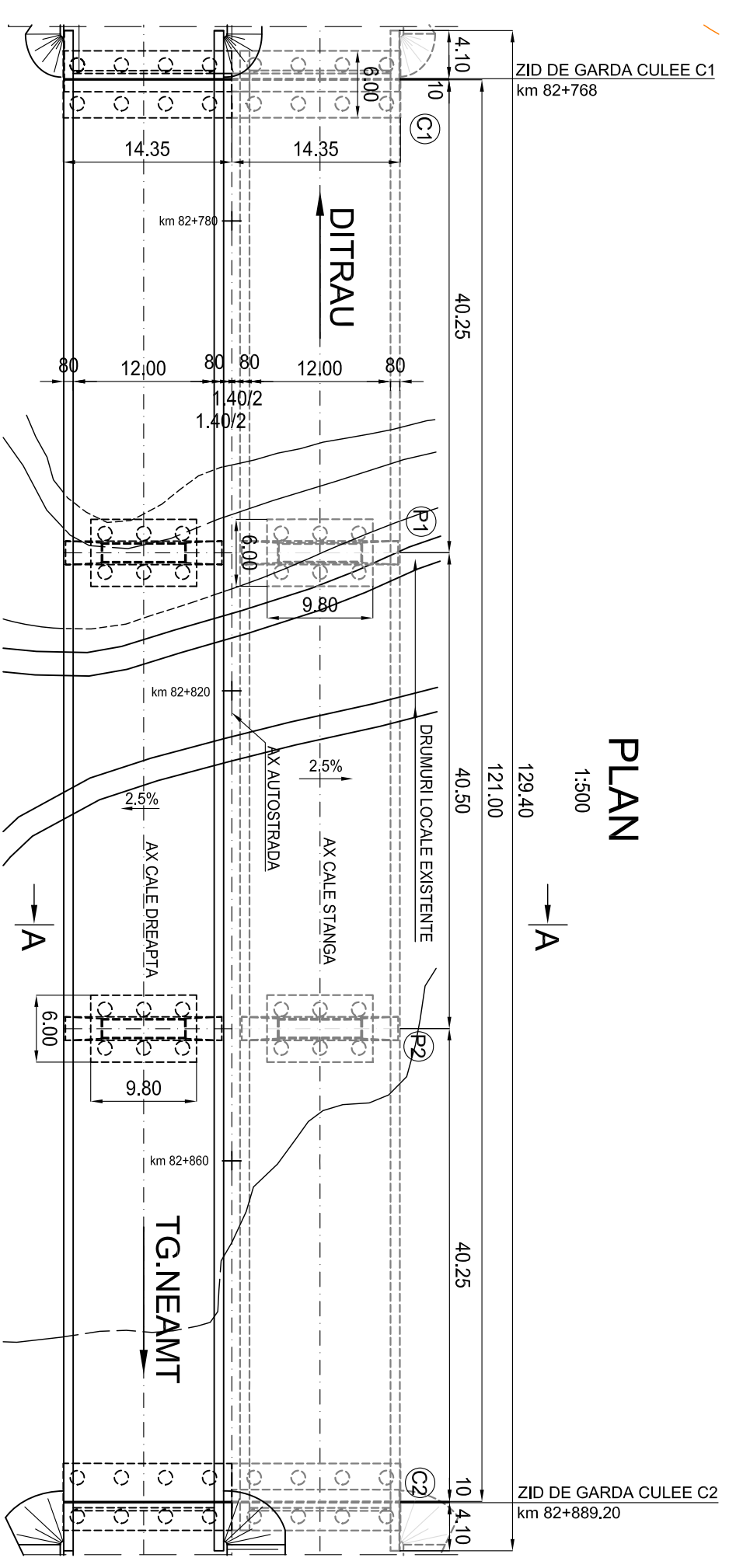
**ELEVATIE**

1:500



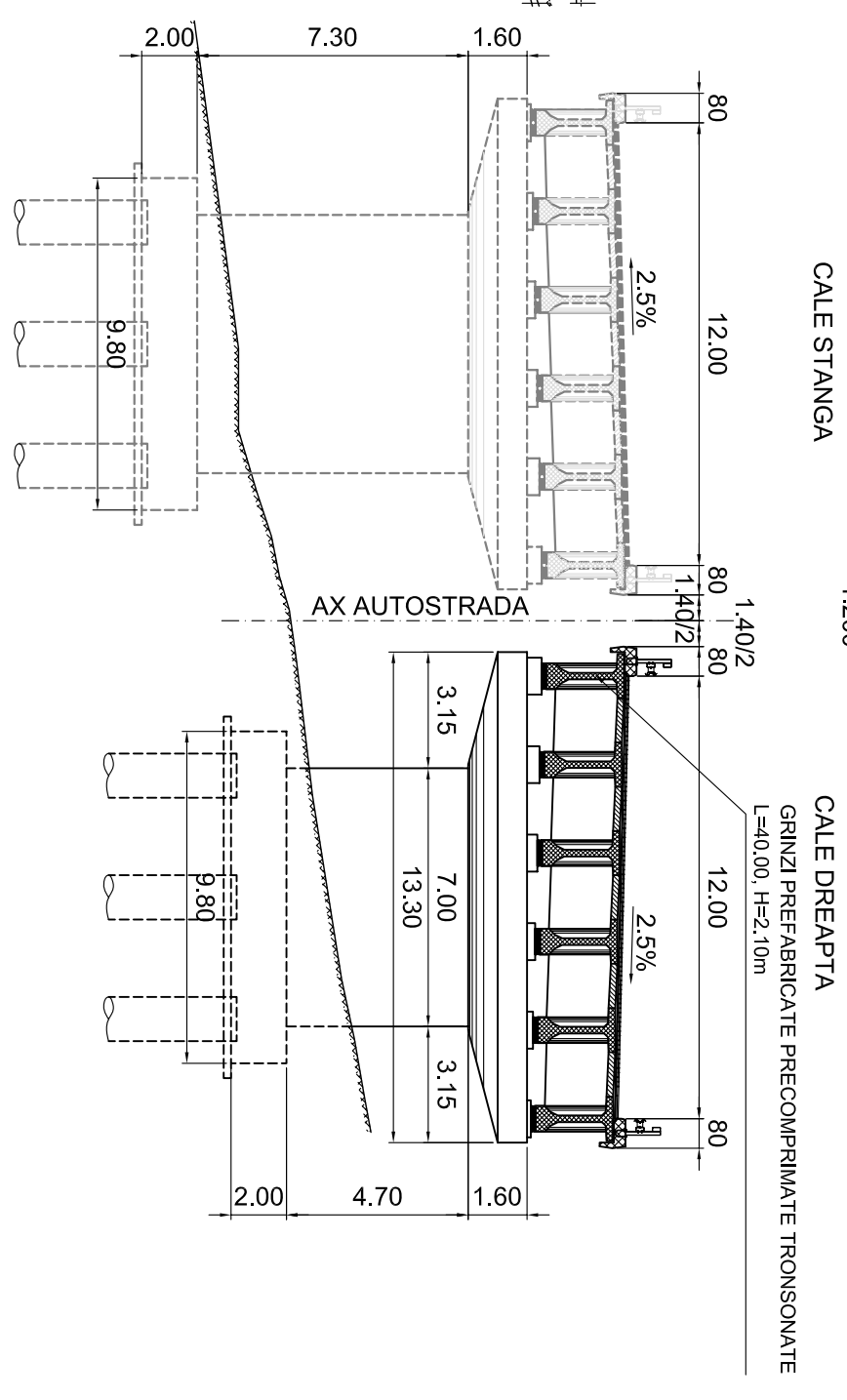
**PLAN**

1:500



**SECTIUNE TRANSVERSALA A-A**

1:200



CONVOI DE CALCUL CONFORM SR EN 1991-2-2:2005  
ZONA SEISMICA : 6 - CONFORM SR 11100/1-93  
CARACTERISTILE SEISMICE ALE ZONEI CONFORM COD P100-1/2006  
ag=0.2g; Tc =0.7sec  
ag - acceleratia terenului de protectie  
g - acceleratia gravitatonala  
CATEGORIA DE IMPORTANTA PRIVIND CALITATEA : "B"