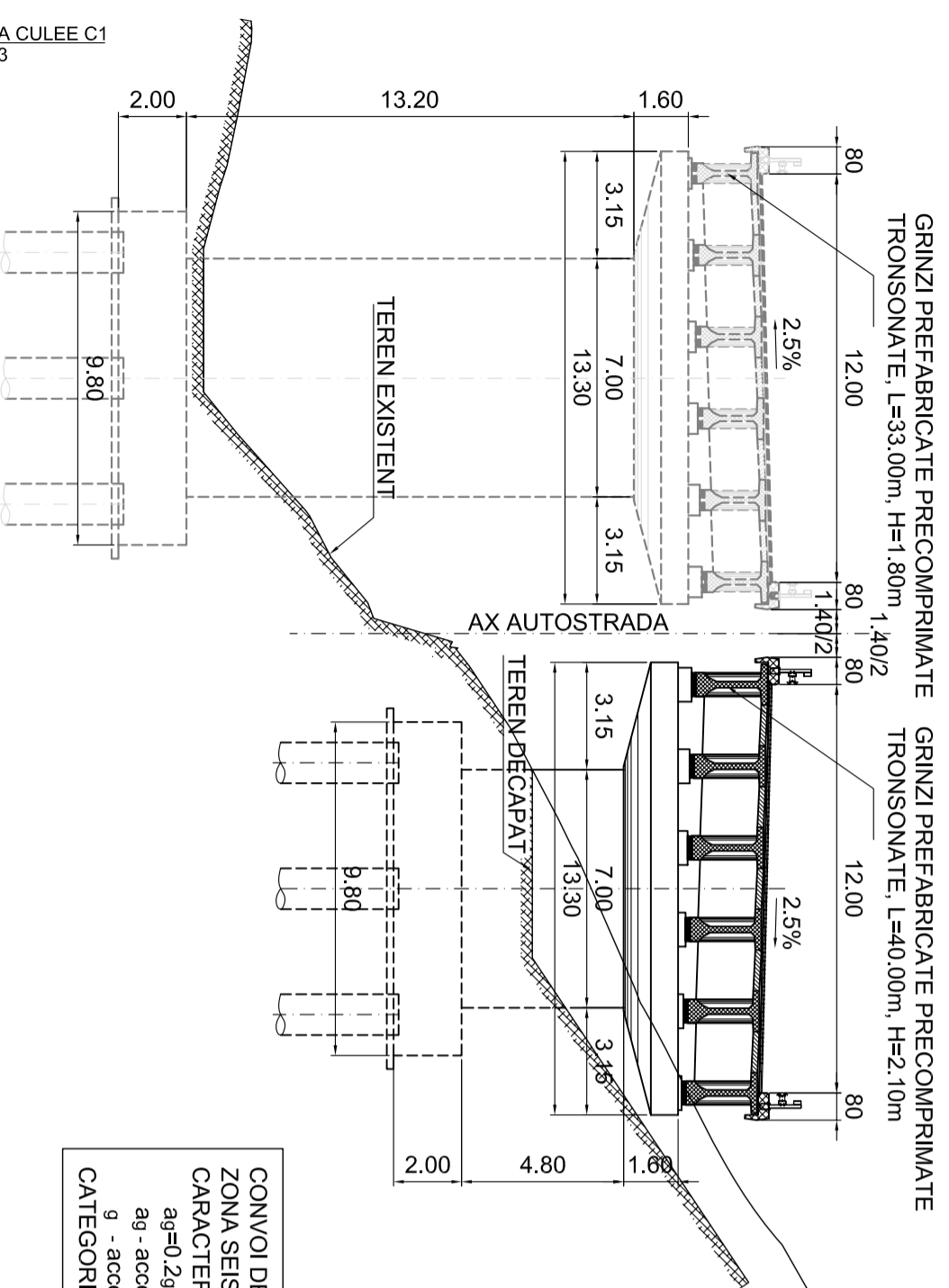


# SECTIUNE TRANSVERSALA A-A

CALE STANGA

CALE DREAPTA

1:200



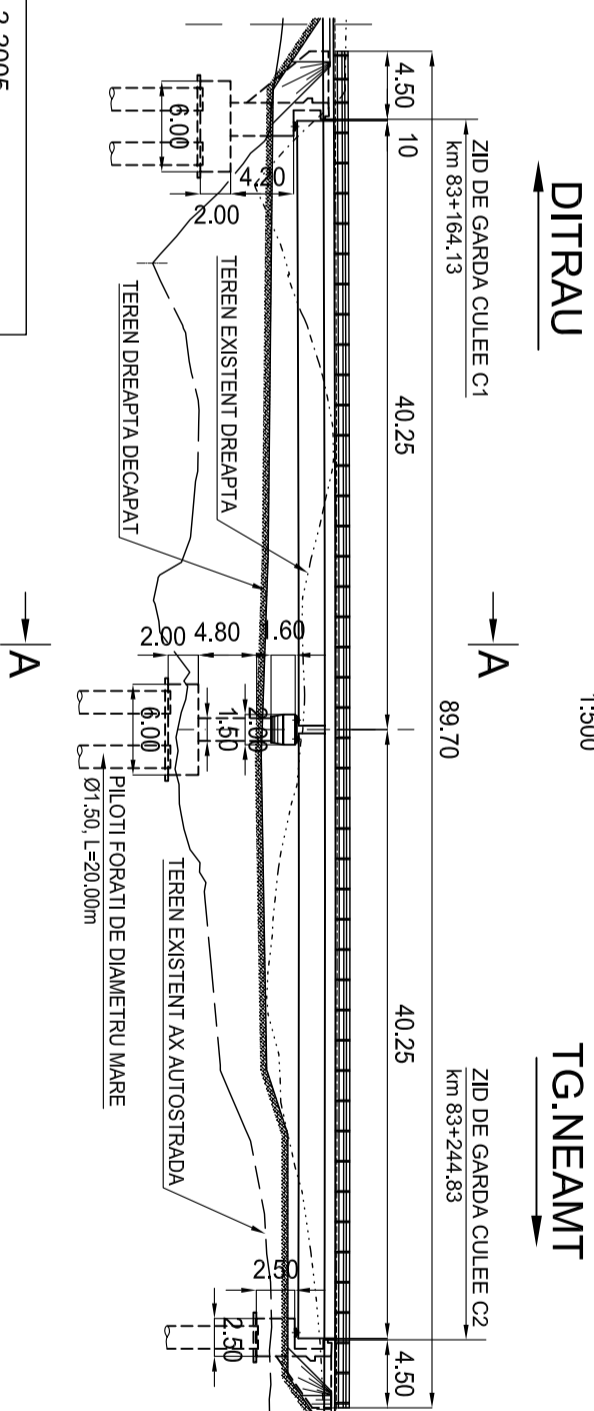
GRINZI PREFABRICATE PRECOMPRIIMATE TRONSONATE, L=33.00m, H=1.80m  
1.40/2

GRINZI PREFABRICATE PRECOMPRIIMATE TRONSONATE, L=40.00m, H=2.10m

CONVOI DE CALCUL CONFORM SR EN 1991-2-2005  
ZONA SEISMICA : 6 - CONFORM SR 11100/1-93  
CARACTERISTILE SEISMICE ALE ZONEI CONFORM COD P100-1/2006  
ag=0.2g; Tc =0.7sec  
ag - accelerația terenului de proiectare  
g - accelerația gravitațională  
CATEGORIA DE IMPORTANȚA PRIVIND CALITATEA : "B"

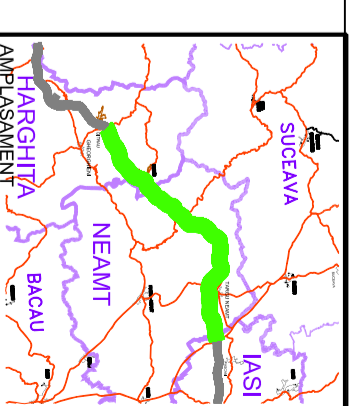
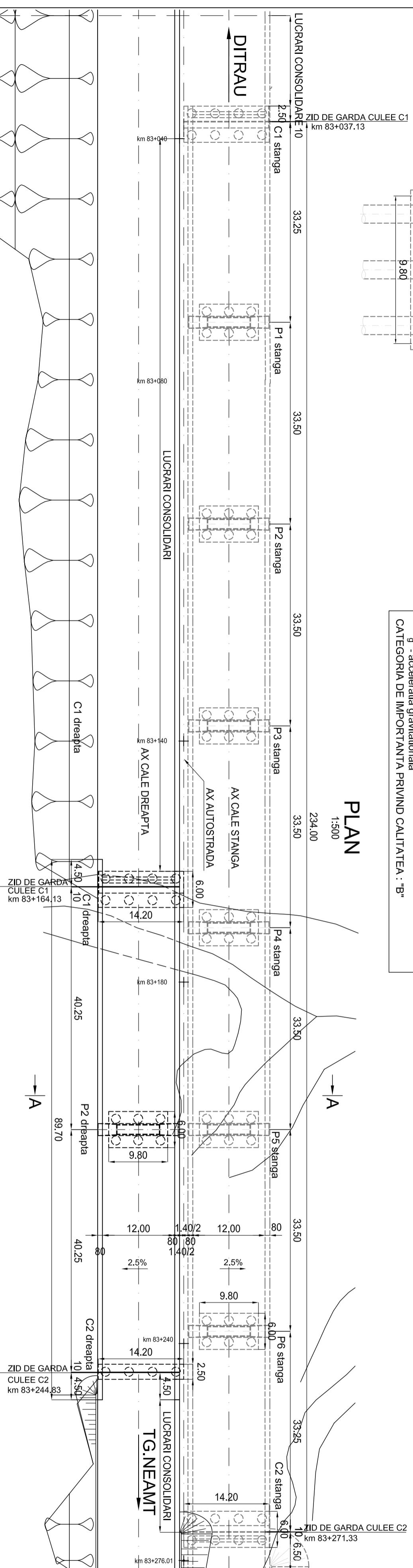
# ELEVATIE - CALE DREAPTA

1:500

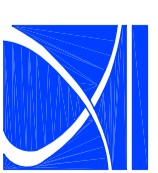


# PLAN

1:500

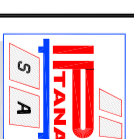


BENEFICIAR



COMPANIA NATIONALA DE AUTOSTRAZI SI DRUMURI NATIONALE DIN ROMANIA

PROIECTANT



IPTANA S.A.

INVESTITIA

AUTOSTRADA  
DITRAU -TARGU NEAMT

CONTRACT NR.: 92 / 58623 / 4275

FAZA DE PROIECTARE

Studiu de Fezabilitate

Proiectat Ing. E. Ionita	Desenat Ing. E. Ionita
Verificat Ing. C. Gădeș	Sef Proiect Ing. V. Osman

LUCRARI DE PODURI

Scara:	1:500, 1:200
Data:	IANUARIE 2011

DISPOZITIE GENERALA  
POD km 83+164.13 - 83+244.83

Cod: IPT-SF-P-05-160

Rev. 0