

Parcare de scurta durata

Se aplica la Km 27+950 dr

PROIECT CO-FINANATAT DE UNIUNEA EUROPEANA PRIN PROGRAMUL OPERATIONAL INFRASTRUCTURA MARE



UNIUNEA EUROPEANA

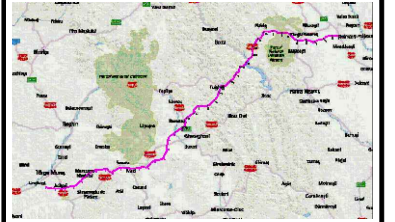


GUVERNUL ROMANIEI



Instrumente Structurale 2014-2020 POIM

AMPLASAMENT



BENEFICIAR

MINISTERUL TRANSPORTURILOR SI INFRASTRUCTURII
COMPANIA NAȚIONALĂ DE ADMINISTRARE A INFRASTRUCTURII RUTIERE



PROIECTANT GENERAL



SUBPROIECTANT

INVESTITIA

COMPLETAREA STUDIULUI DE FEZABILITATE PENTRU AUTOSTRADA TÂRGU MUREȘ-TÂRGU NEAMȚ

FAZA DE PROIECTARE

Studiu de Fezabilitate

Coordonator de proiect
ing. CHIOTAN Vlad

Proiectat
arh. ENESCU Radu

Verificat
arh. BÎSCA Alfredo

Proiect nr:
92/36788 / 28.05.2019

Scara: 1:1250

Data: Ianuarie 2023

Parcare de scurta durata
km 27+950 dr
Plansa tip

Cod:MN-T1-S2-DO-PS-05

Rev. 4

NOTA:

Forma, suprafata si amplasamentul definitiv al parcarii precum si distributia obiectelor in interior se vor stabili in functie de conditiile de teren la faza PT.

Nr. locuri parcare in varianta prezentata:

2 locuri autocare+15 locuri vehicule grele

41 locuri autoturisme (din care 4 pentru pers. cu dizabilitati si 6 electrice)

Suprafata parcarii ~ 17.313,55mp

NOTE:

Parking shape, area, and final emplacement as well as inner area facilities distribution will be established according to land condition at project TP stage.

The number of parking places in this version:

2 places for buses and 15 places heavy trucks

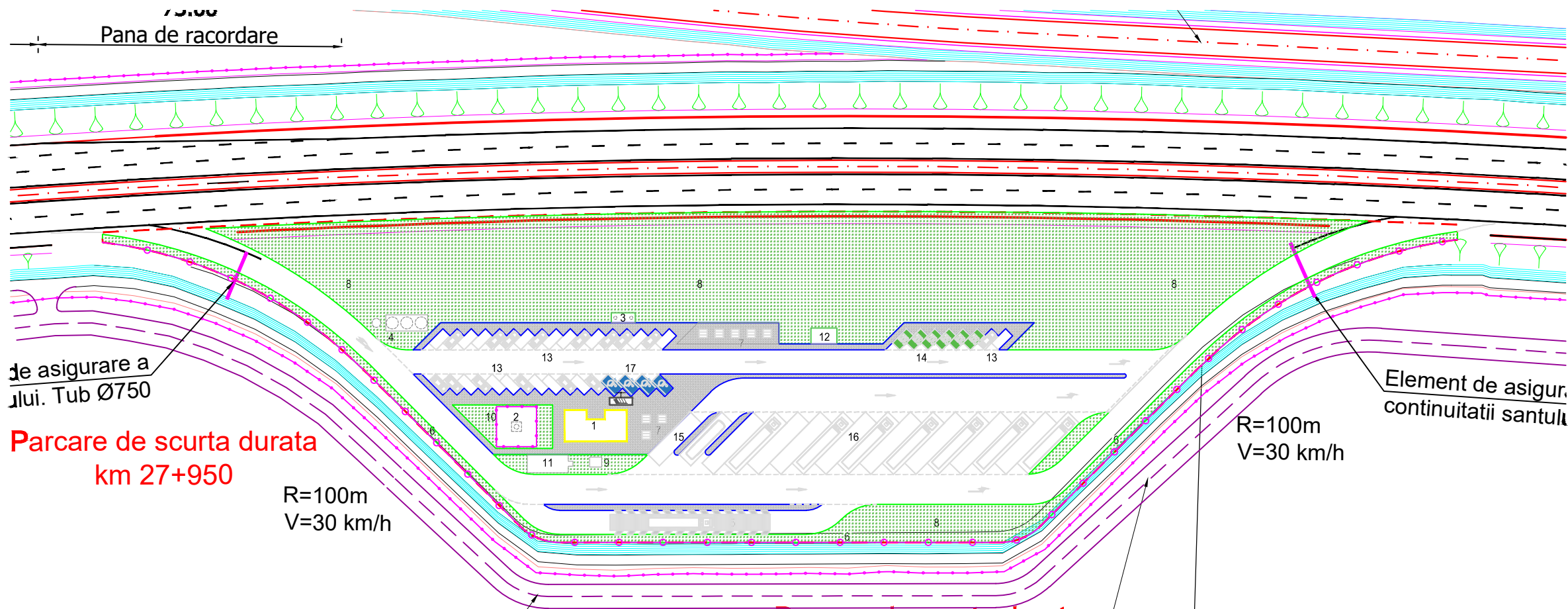
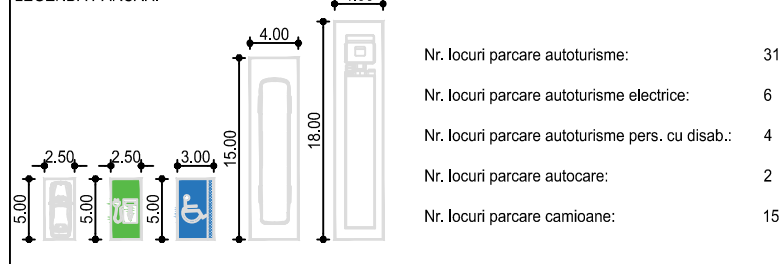
41 places for cars (4 for disabled persons, 6 for electric cars)

Parking area ~17.313,55sqm

LEGENDA PARCARE DE SCURTA DURATA / SHORT TIME PARKING LEGEND:

- | | |
|---|---|
| 1. GRUP SANITAR PUBLIC / PUBLIC RESTROOM | 10. IMPREJMUIRE PUT FORAT / FENCE AROUND FRESH WATER WELL |
| 2. PUT FORAT / FRESH WATER WELL | 11. REZERVOR APA CU GRUP POMPARE / WATER TANK AND PUMPING GROUP |
| 3. REZERVOR ETANS VIDANJABIL / DRAINABLE SEWAGE TANK | 12. PLATFORMA CONTAINERE ECOLOGICE / WASTE CONTAINER PLATFORM |
| 4. STATIE POMPARE APE PLUVIALE SI REZERVOR TAMPON / RAIN WATER PUMPING STATION AND STORAGE TANK | 13. PARCARE AUTOTURISME - 31 LOCURI / CAR PARKING - 31 PLACES |
| 5. PLATFORMA DE CANTARIRE / WEIGHTING PLATFORM | 14. PARCARE AUTOTURISME ELECTRICE - 6 LOCURI / ELECTRIC CAR PARKING - 6 PLC |
| 6. IMPREJMUIRE EXTERIOARA / EXTERIOR FENCE | 15. PARCARE AUTOCARE - 2 LOCURI / BUS PARKING - 2 PLACES |
| 7. MESE ACOPERITE / COVERED TABLES | 16. PARCARE AUTOVEHICULE GRELE - 15 LOCURI / TRUCK PARKING - 15 PLACES |
| 8. SPATII PROTECTIE / PROTECTION VEGETATION | 17. PARCARE PENTRU PERSOANE CU DIZABILITATI - 4 LOCURI / PARKING FOR PERSONS WITH DISABILITIES - 4 PLACES |
| 9. POST TRAFU / TRANSFORMER STATION | |

LEGENDA PARCARI



Parcare de scurta durata
km 27+950

R=100m
V=30 km/h

R=100m
V=30 km/h