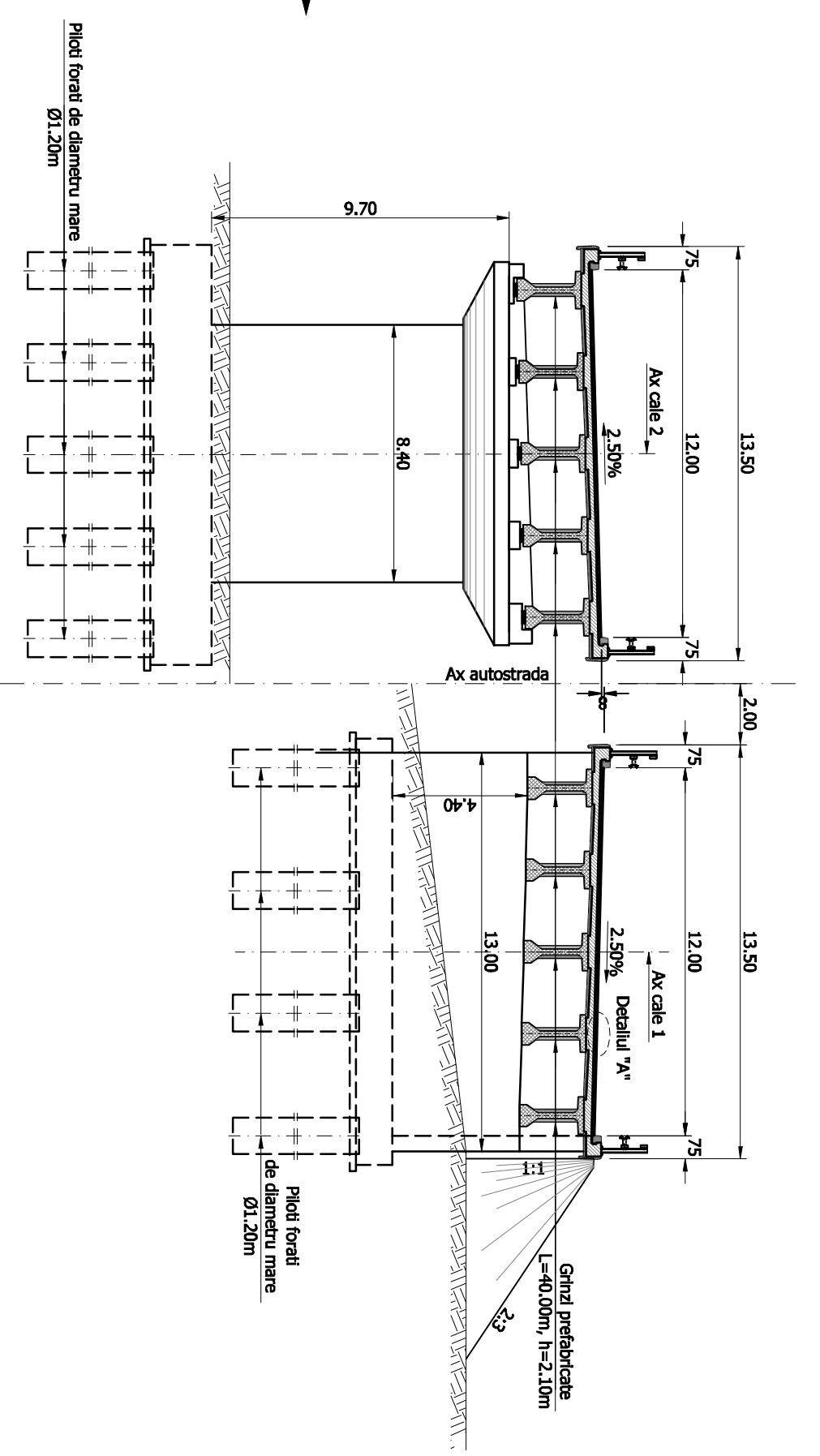


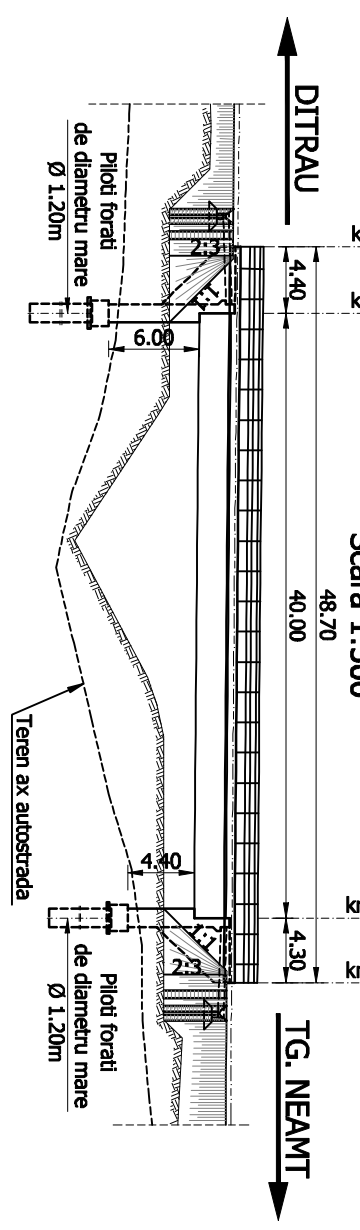
SECȚIUNE TRANSVERSALA

Scara 1:200



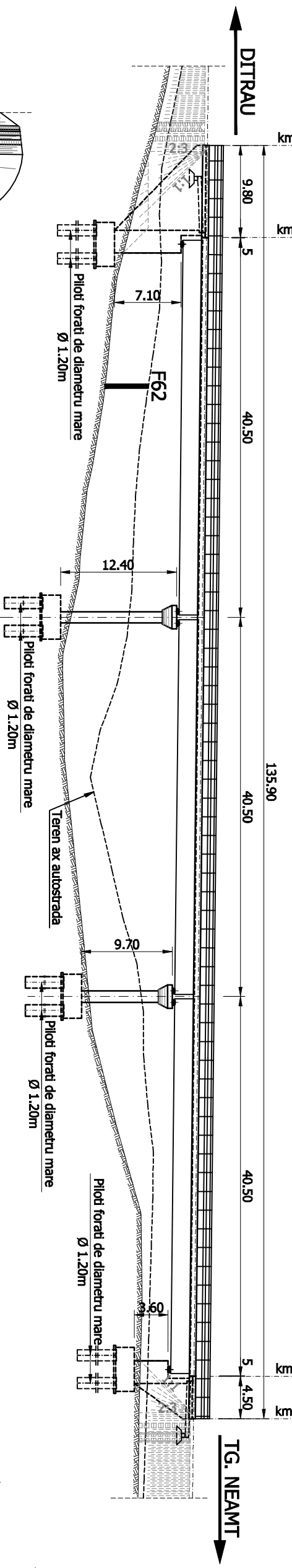
ELEVATIE CALE 1

Scara 1:500



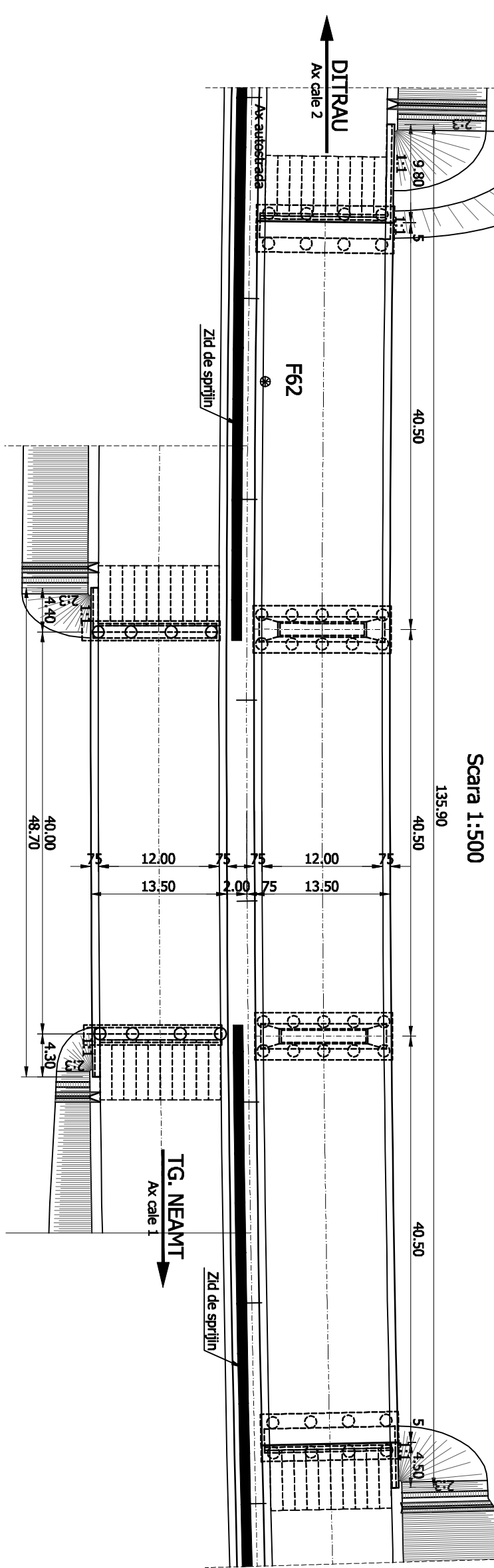
ELEVATIE CALE 2

Scara 1:500



VEDERE PLANA

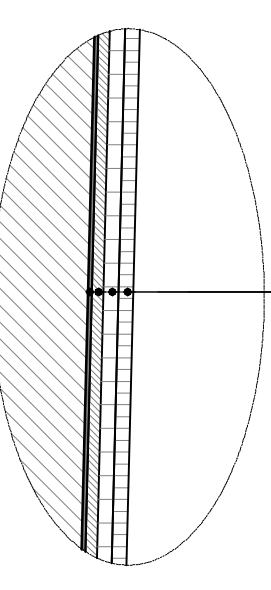
Scara 1:500



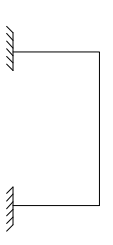
DETALIUL "A"

Scara 1:20

- Mixtura asfaltică MASF16 4 cm
- Beton asfaltic BAP16 4 cm
- Protecție hidroizolantă BA8 3cm
- Hidroizolantă 1 cm

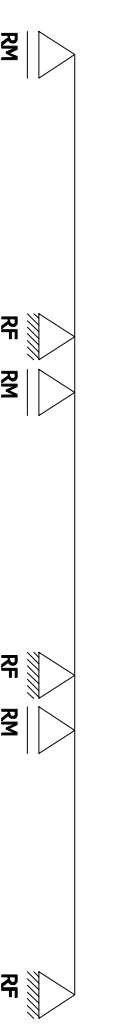


SCHEMA STATICA - CALE 1 CADRU



SCHEMA STATICA CALE 2 - GRINZI SIMPLU REZEMATE

CONTINUTIZATE LA NIVELUL PLACII



MATERIALE

1. Beton cf. CP 012/2007

Element constructiv	Beton	Clasa de expunere / Iasare	A/C	Ciment	Armatura
Beton egalizare	C8/10	-	-	-	-
Pereu	C30/37	XC4:XF2	S4	0.500	300
Piloni	C25/30	XC2	S4	0.60	375
Radier	C25/30	XC2:XF2	S4	0.60	260
Elemente	C30/37	XC4:XF2:XD1	S3	0.55	300
Placi racordare / Grinda rezemare	C35/45	XC4:XF2:XD3	S3	0.50	320
Grinda prefabricată prestensionată	C50/60	XC4:XD1:XF2	S4	0.40	320
Placa suprabetonată / Borduri	C35/45	XC4:XF4:XD3	S3	0.50	340
Predale prefabricate	C35/45	XC4:XD1:XF4	S4	0.50	340
Prefabricat grinda parapet	C35/45	XC4:XD3:XF4	S4	0.45	340

2. Otel

Armatura moale	B500S/C/BS1500S/C
Armatura prestensionată	TBP Y1860S7
Otel tablier metallic	S355NL / S355L2+N, echivalent Cl.52EP

Convoi de calcul: LM1, LM2, conf. SR EN 1991-2/2005

Categoria de importanta: "g"

Exigente de verificare: A4, B2, D

Parametri seismici: a_g=0.25g, T_c=0.70s conf. cod P100/1-2013, SR EN 1998-2/2006