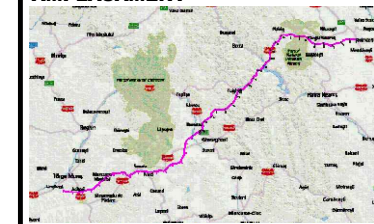




AMPLASAMENT



BENEFICIAR

MINISTERUL TRANSPORTURILOR ȘI INFRASTRUCTURII
COMPANIA NAȚIONALĂ DE ADMINISTRARE A INFRASTRUCTURII RUTIERE



PROIECTANT GENERAL



SUBPROIECTANT

INVESTITIA

COMPLETAREA STUDIULUI DE FEZABILITATE PENTRU AUTOSTRADA TÂRGU MUREȘ-TÂRGU NEAMȚ

FAZA DE PROIECTARE

Studiu de Fezabilitate

Coordonator de proiect
ing. CHIOTAN Vlad

Proiectat
ing. ZAINESCU Alina

Verificat
ing. PREDESCU Mihai

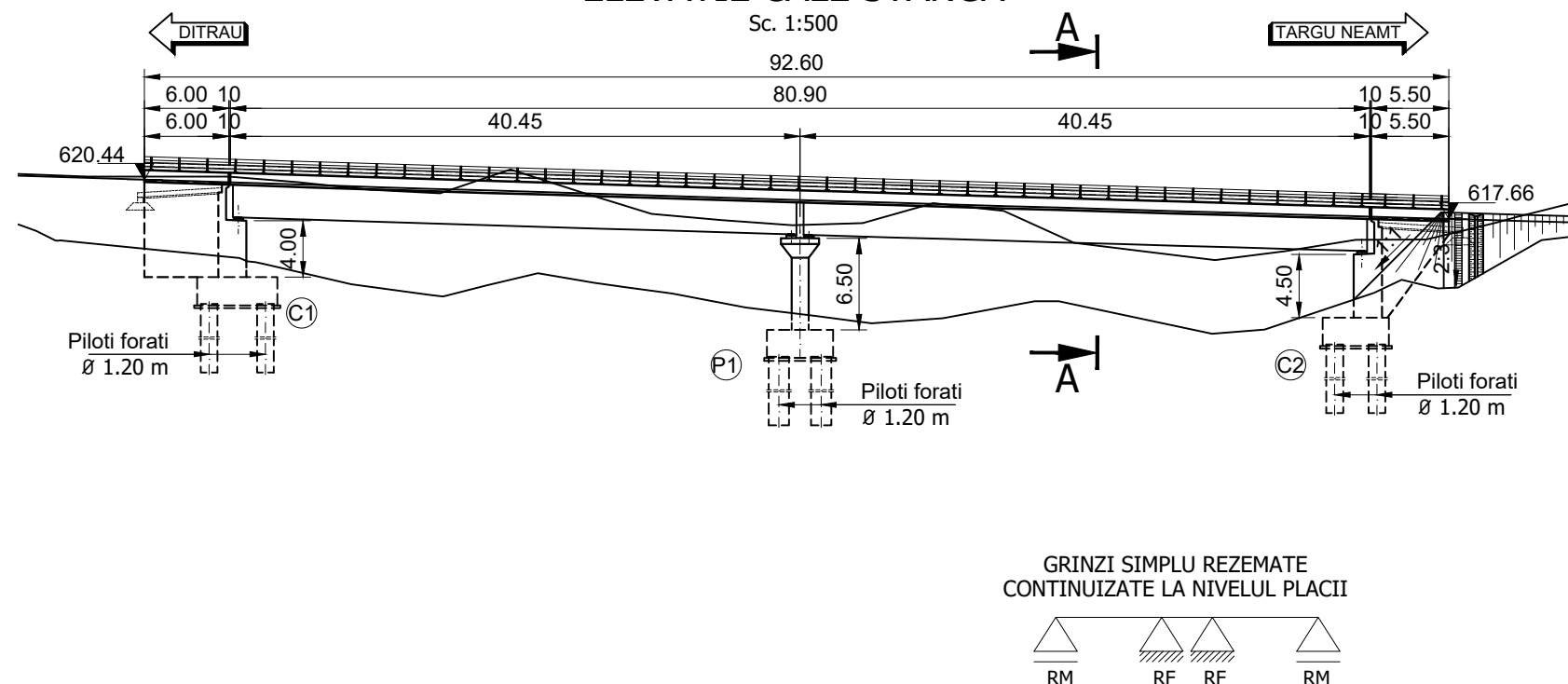
Proiect nr:
92/36788 / 28.05.2019

Scara: 1:500 1:200

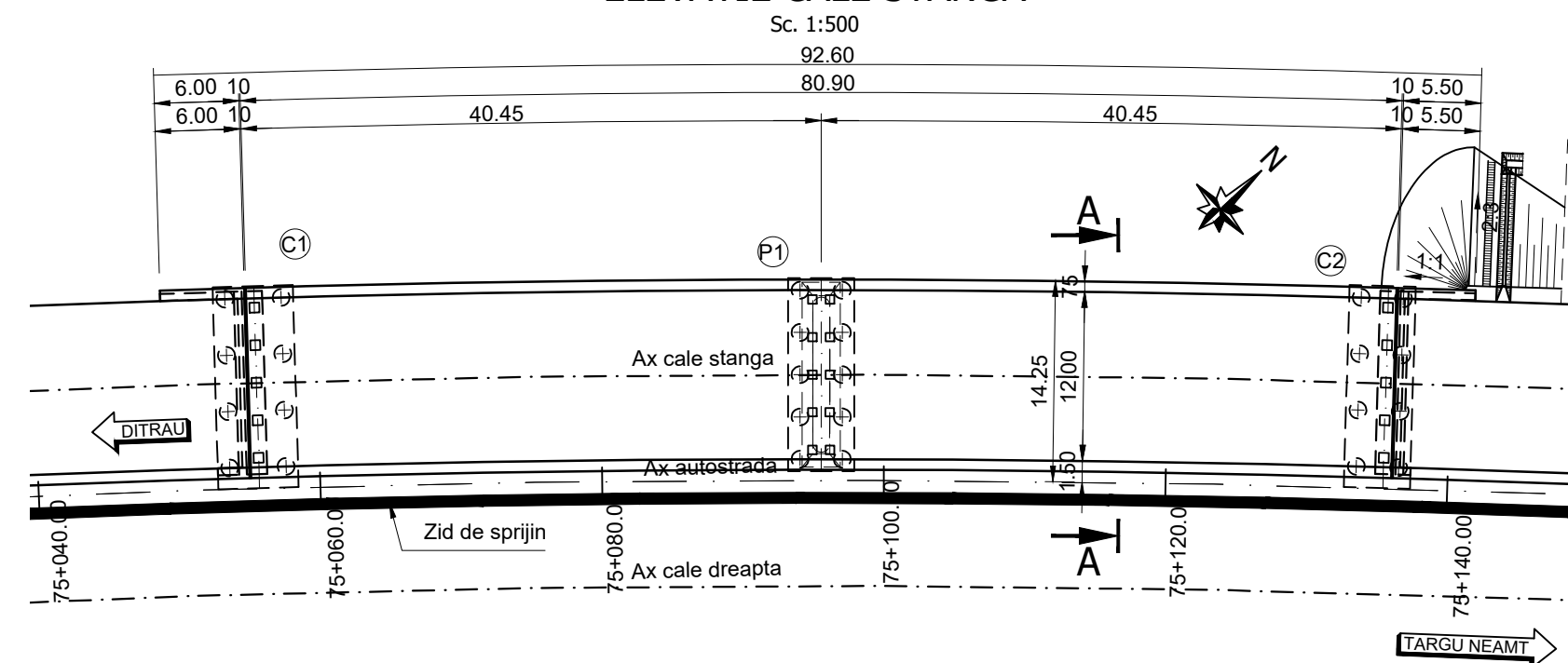
Data: Februarie 2022

Viaduct pe autostrada peste vale
km 75+095
DISPOZIȚIE GENERALĂ

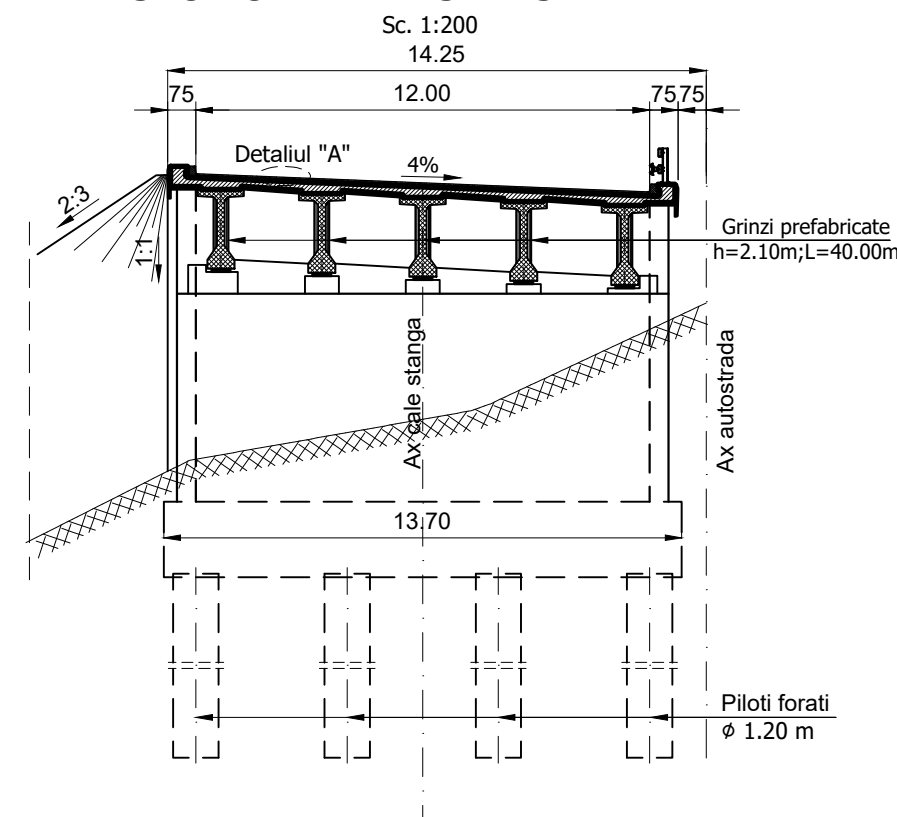
ELEVATIE CALE STANGA



ELEVATIE CALE STANGA



SECTIUNE TRANSVERSALA A - A



DETALIUL "A"

Scara 1:20

Mixtura asfaltica MAS16 - 4 cm
Beton asfaltic BAP16 - 4 cm
Protectie hidroizolatie BA8 - 3 cm
Hidroizolatie - 1cm



MATERIALE

1. Beton cf. CP 012/2007

Element constructiv	Beton	Clasa de expunere	Tasare	A/C	Ciment	Armatura
Beton egalizare	C8/10	-	-	-	-	-
Pereu	C30/37	XC4;XF2	S4	0.500	300	-
Piloti	C25/30	XC2	S4	0.60	375	B500SC/BST500SC
Radier	C25/30	XC2;XF2	S4	0.60	260	B500SC/BST500SC
Elevatii	C30/37	XC4;XF2;XD1	S3	0.55	300	B500SC/BST500SC
	C35/45	XC4;XF2;XD3	S3	0.50	320	B500SC/BST500SC
Placi racordare / Grinda rezemare	C25/30	XC2;XF2	S4	0.60	300	B500SC/BST500SC
Grinda prefabricata post-tensionata	C45/55	XC4;XD1;XF2	S4	0.40	320	B500SC/BST500SC
Grinda prefabricata pretensionata	C50/60	XC4;XD1;XF2	S4	0.40	320	B500SC/BST500SC
Placa suprabetonare / Borduri	C35/45	XC4;XF4;XD3	S3	0.50	340	B500SC/BST500SC
Predale prefabricate	C35/45	XC4;XD1;XF4	S4	0.50	340	B500SC/BST500SC
Prefabricat grinda parapet	C35/45	XC4;XD3;XF4	S4	0.45	340	B500SC/BST500SC

2. Otel

Armatura moale	B500SC/BST500SC
Armatura pretensionata	TBP Y1860S7
Otel tablier metalic	S355NL / S355J2+N, echivalent OL52EP