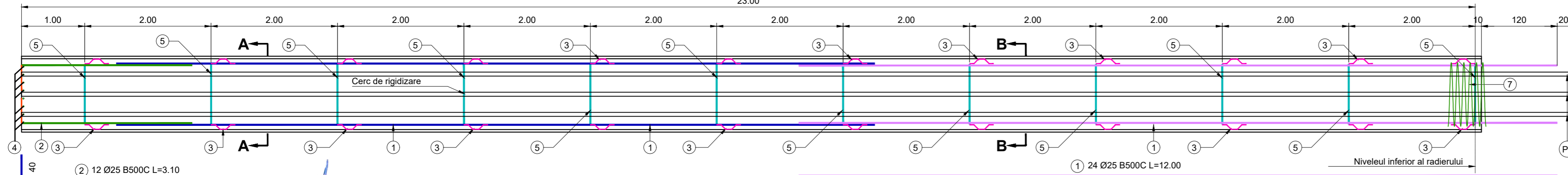


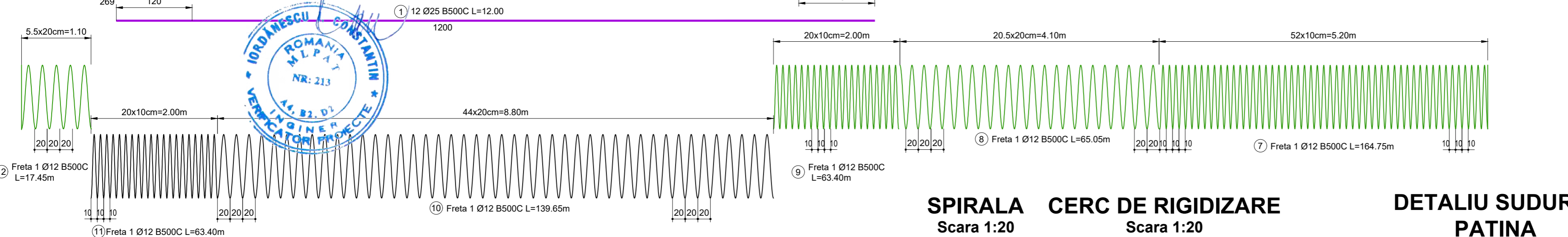
# SECTIUNE LONGITUDINALA

Scara 1:50

23.00



- NOTA:
- Calitate otel armaturi: B500C
  - Calitate otel confectionii metalice: S235 JR
  - Continuitatea si calitatea betonului dupa turnare vor fi verificate prin metoda carotajului ultrasonic pentru cel putin 30% din numarul total de piloti, dar cel putin pentru un pilot la fiecare fundatie, respectiv prin metoda impedantei mecanice pentru 100% din numarul total de piloti.
  - La pilotii la care nu se realizeaza carotaj ultrasonic nu sunt necesare piesele metalice P1 si P2, respectiv colierele marca 7.
  - Tehnologia de realizare a pilotului forat considerata este cu tubaj recuperabil.
  - Stratul minim de acoperire cu beton a=9cm.
  - Pentru a asigura legatura intre tronsoanele de carcasa, cel putin o treime din barele longitudinale din sectiune se vor joanta prin afturi de sudura

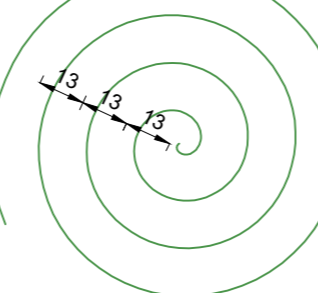


## Material metalic control

Reper	Element	Material	Sectiune	Lungime (m)	Buc	Greutate (kg)
P1	Teava	S235 JR	Ø60.3X3	24.50	3	326.31
P2	Manson imbinare	S235 JR	Ø73X5	0.10	6	5.03
P3	Capac	S235 JR	Ø58X5	0.58	3	0.31
<b>TOTAL</b>						<b>331.65</b>

## SPIRALA

Scara 1:20



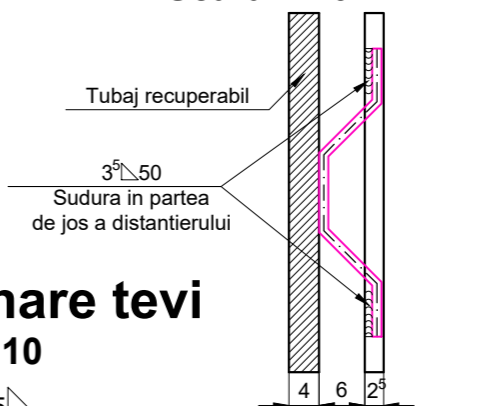
## CERC DE RIGIDIZARE

Scara 1:20



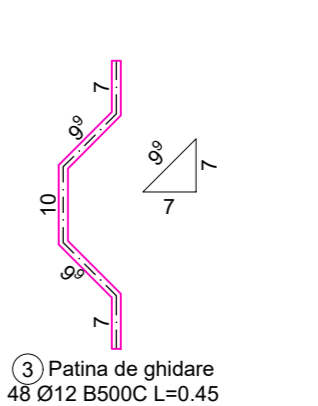
## DETALIU SUDURA PATINA DE GHIDARE

Scara 1:10



## PATINA DE GHIDARE

Scara 1:10

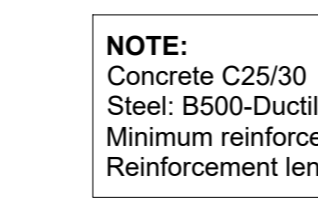


## EXTRAS DE ARMATURA

Marca	Ø (mm)	n (buc.)	L (m)	nxL - B500C		
				Ø10	Ø12	Ø25
1	25	36	12.00			432.00
2	25	12	3.10			37.20
3	12	48	0.45		21.60	
4	10	1	6.45	6.45		
5	25	12	3.00			36.00
6	10	36	0.36	12.96		
7	12	1	164.75		164.75	
8	12	1	65.05		65.05	
9	12	1	63.40		63.40	
10	12	1	139.65		139.65	
11	12	1	63.40		63.40	
12	12	1	17.45		17.45	
<b>TOTAL LUNGIMI PE DIAMETRU (m)</b>				19.41	535.30	505.20
<b>GREUTATE PE METRU (kg/m)</b>				0.617	0.888	3.853
<b>GREUTATE PE DIAMETRU (kg)</b>				11.97	475.25	1946.72
<b>GREUTATE TOTALA (kg)</b>				2434.00		
<b>TOTAL pt.</b>				1	<b>BUCATI (kg)</b>	<b>2434.00</b>

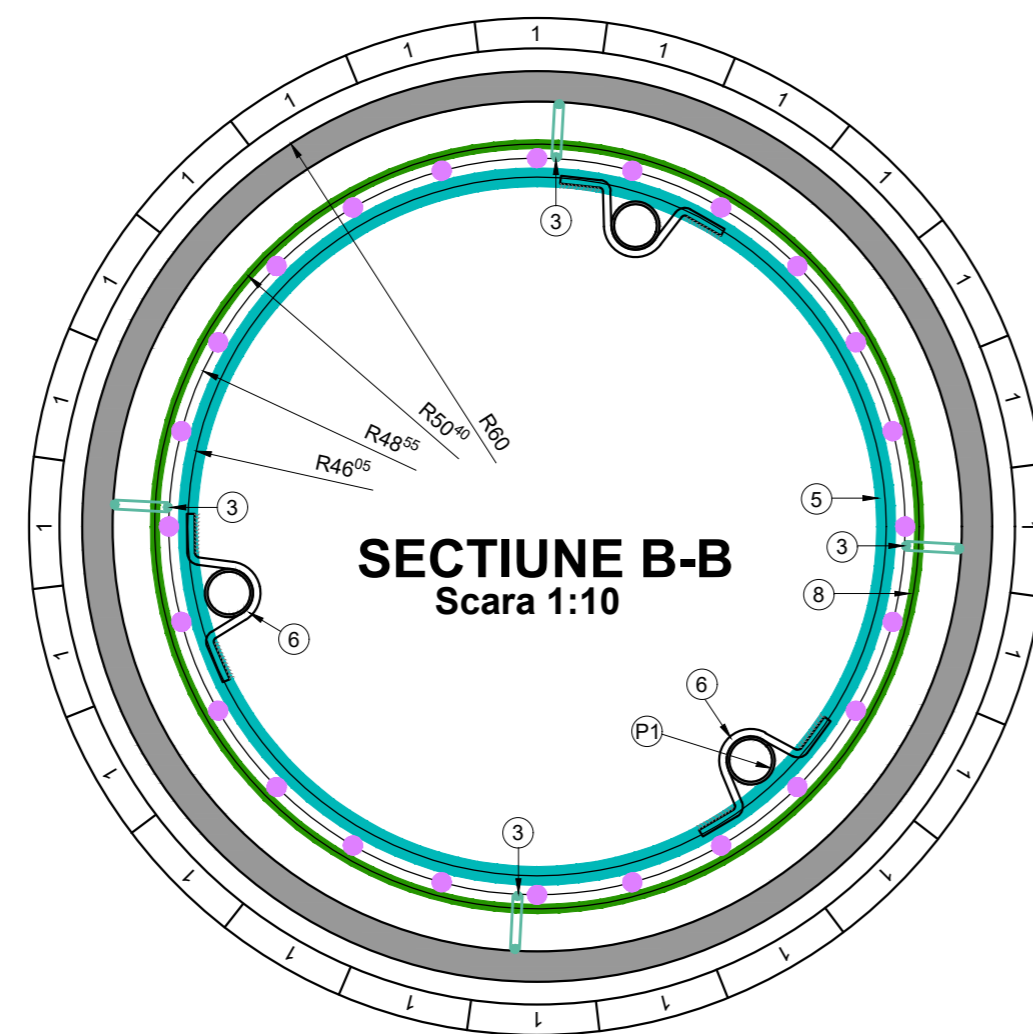
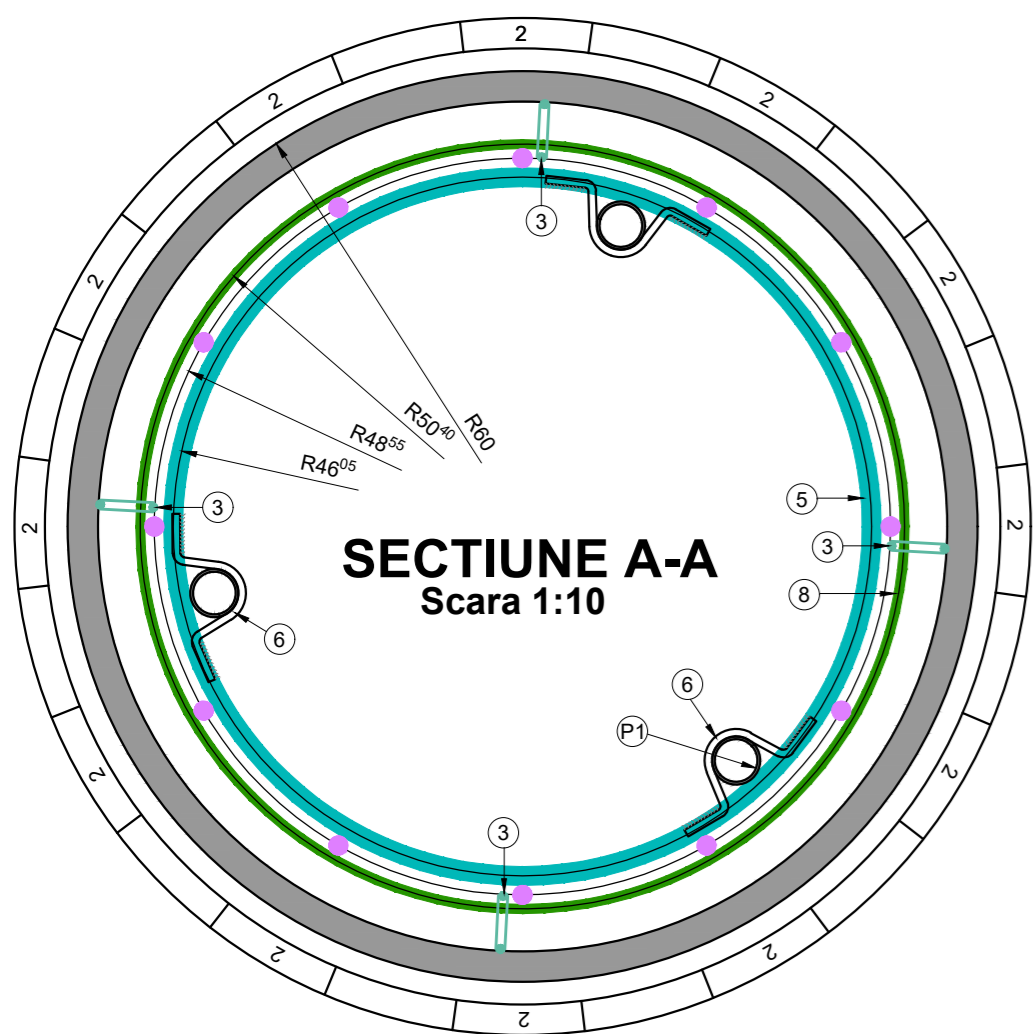
## Detaliu imbinare tevi

Scara 1:10



NOTE:  
Concrete C25/30 - XC2  
Steel: B500-Ductility class C  
Minimum reinforcement cover: 9 cm  
Reinforcement length is calculated in axis bar.

NOTA:  
Beton C25/305 - XC2  
Otel: B500-Casa de ductilitate C  
Stratul de acoperire minim cu beton: 9 cm  
Cotarea armaturilor este realizata in axul barelor.



<b>PROIECTANT / DESIGNER:</b> S.C. CONSITRANS S.R.L.	<b>BENEFICIAR / BENEFICIARY:</b> MUNICIPIUL ARAD, MUNICIPIUL ORADEA, CONSILIUL JUDETEAN ARAD, CONSILIUL JUDETEAN BIHOR CNAIR	<b>FUNCTIA / POSITION:</b> COORDONATOR DE PROIECT / PROJECT MANAGER	<b>NUME / NAME:</b> ing. S. VEACESLAV	<b>SEMNTURA / SIGNATURE:</b> 	<b>Titlu plansa / Drawing title:</b> Plan armare piloti forati Ø1200, L=23.00m	<b>REVI / REV:</b> R00	<b>DATA / DATE:</b> 11.2023	<b>DETALII REVIZIE / REVISION DETAILS:</b> PTE	<b>PROIECTAT / DESIGNER:</b> Consitrans
<b>INVESTITIA / INVESTMENT:</b> ACTUALIZARE/COMPLETARE/REVIZUIRE (S.F. + P.A.C. + P.O.E + P.T.E.) "DRUM EXPRES ARAD ORADEA" ACTUALIZATION/COMPLETION (S.F. + P.A.C. + P.O.E + P.T.E.) "EXPRESS ROAD ARAD ORADEA"	<b>SEF PROIECT SPECIALITATE / TEAM LEADER:</b> ing. D. COVELTIR	<b>SEMNTURA / SIGNATURE:</b> 	<b>NUME / NAME:</b> ing. D. COVELTIR	<b>SEMNTURA / SIGNATURE:</b> 	<b>Pod pe DX la km 39+675 peste Vale Barmond / Bridge on DX over Valea Barmond</b>				
<b>FAZA PROIECTARE / DESIGN STAGE:</b> PROIECT TEHNIC DE EXECUTIE / EXECUTION TECHNICAL PROJECT	<b>PROIECTAT / DESIGNER:</b> ing. V. URDAREANU	<b>SEMNTURA / SIGNATURE:</b> 	<b>NUME / NAME:</b> ing. V. URDAREANU	<b>SEMNTURA / SIGNATURE:</b> 	<b>LUCRARI DE POD / BRIDGE WORKS</b>				
<b>Contract /Contract:</b> 14724/01.07.2021 <b>Project /Project no.:</b> 001/2021	<b>Data / Date:</b> 11 / 2023	<b>Scara /Scale:</b> 1:50 1:20 1:10	<b>VERIFICAT / INTERNAL CHECKER:</b> ing. D. COVELTIR	<b>SEMNTURA / SIGNATURE:</b> 	<b>Cod plansa / Drawing code:</b> CST-0121-PTE-0-DX-02-P23-APF-01-R00				

