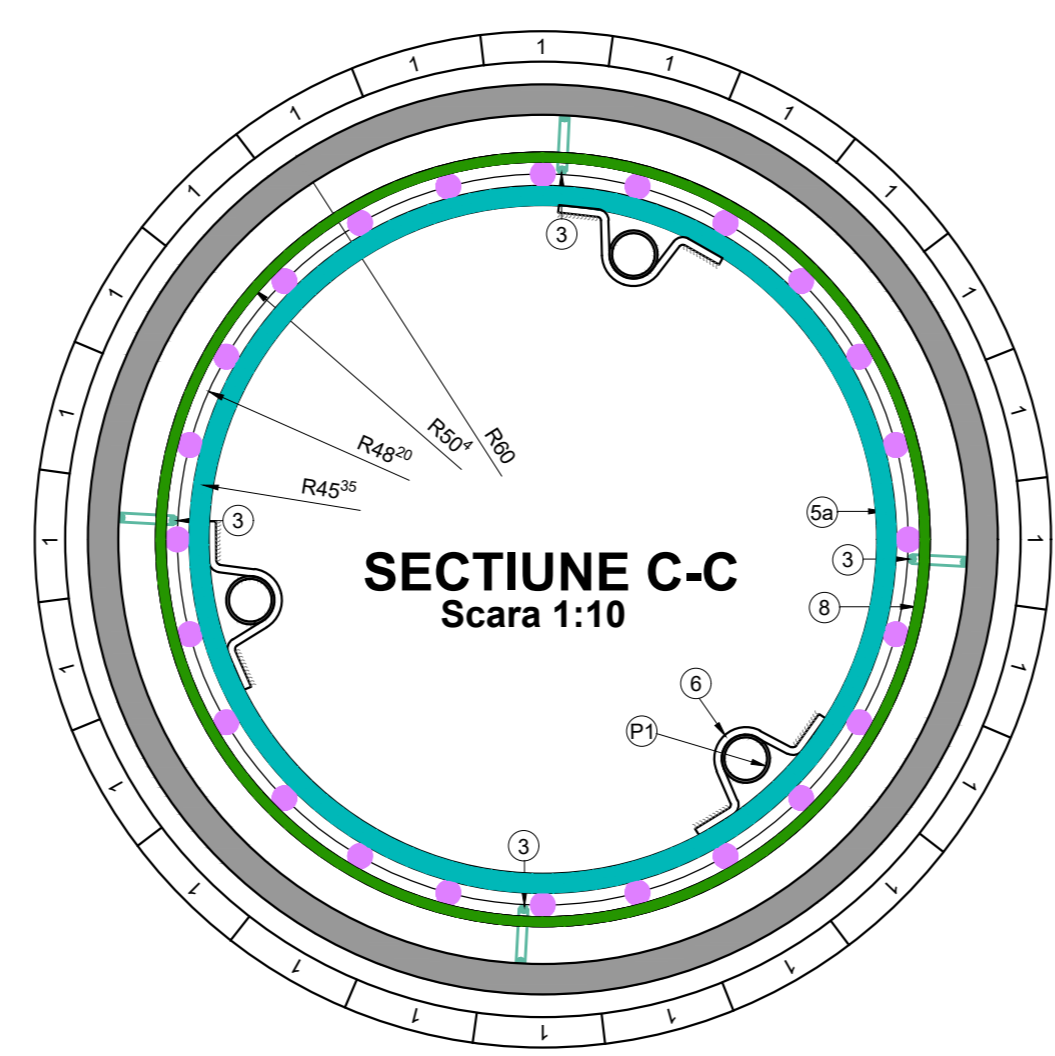
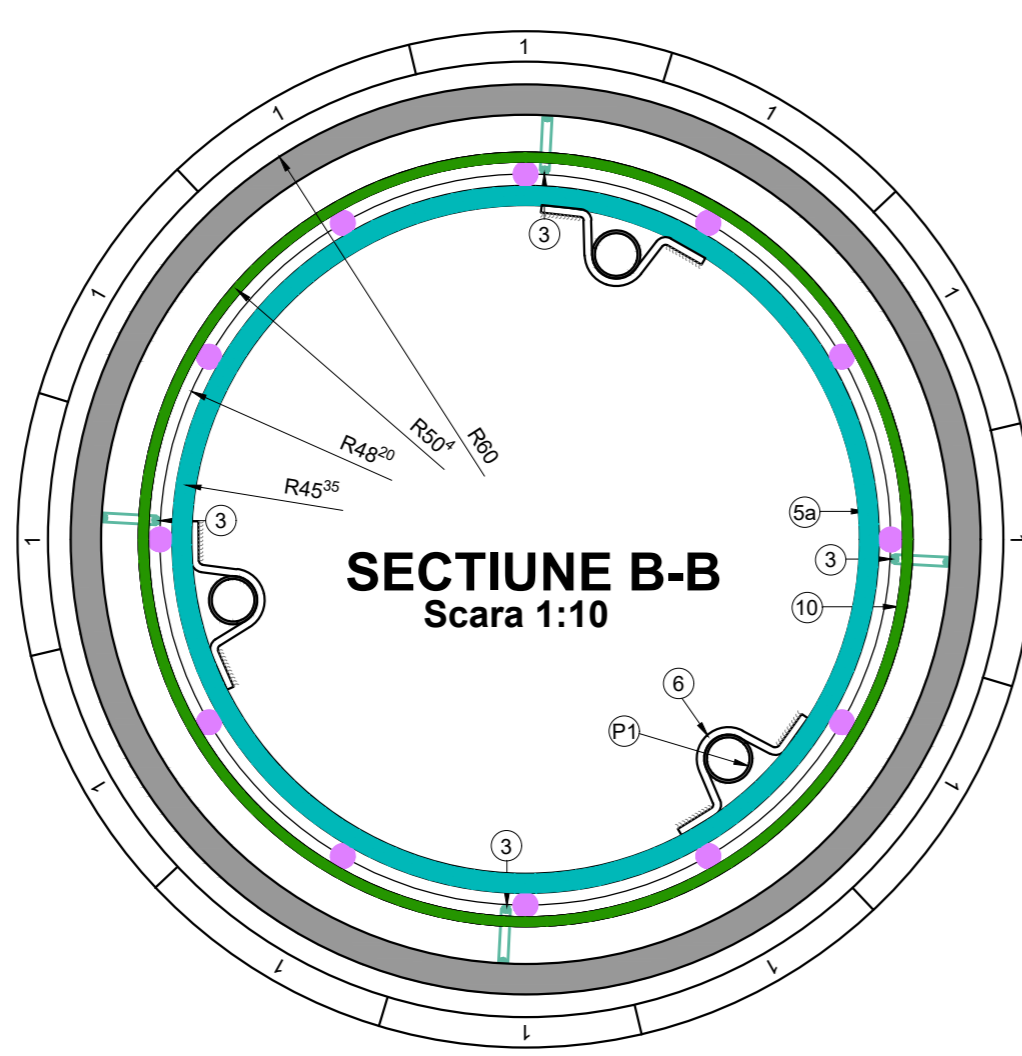
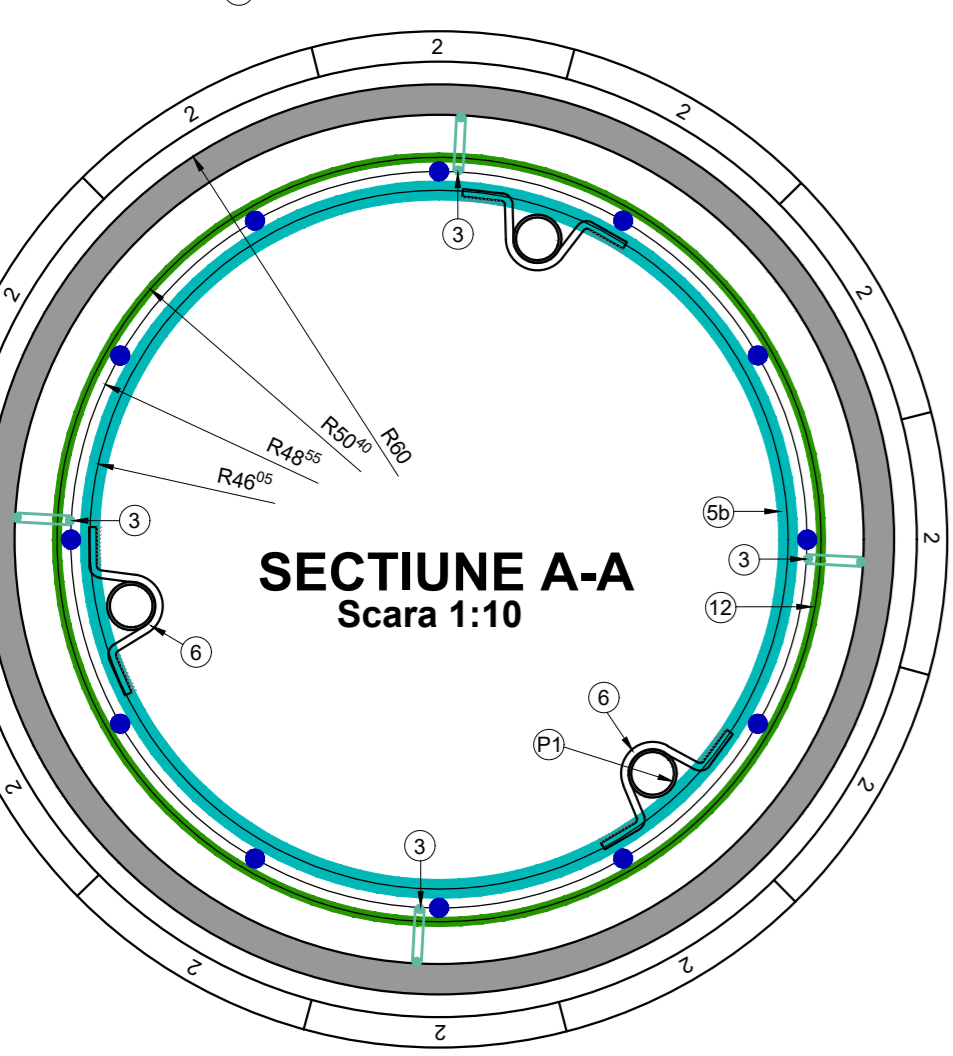
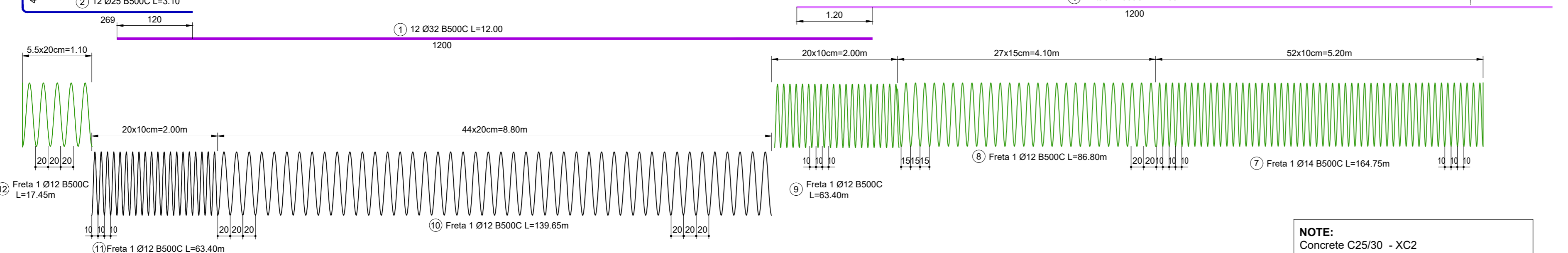
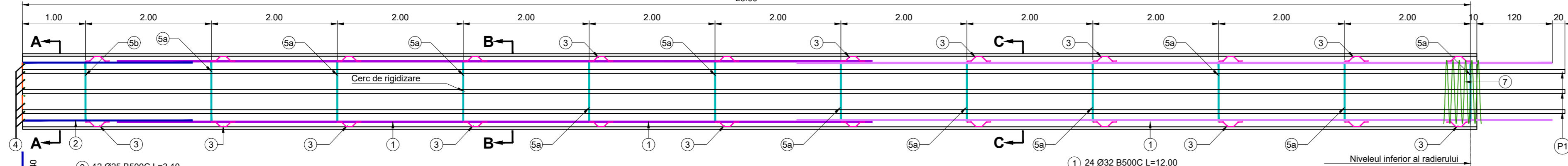


# SECTIUNE LONGITUDINALA

Scara 1:50  
23.00

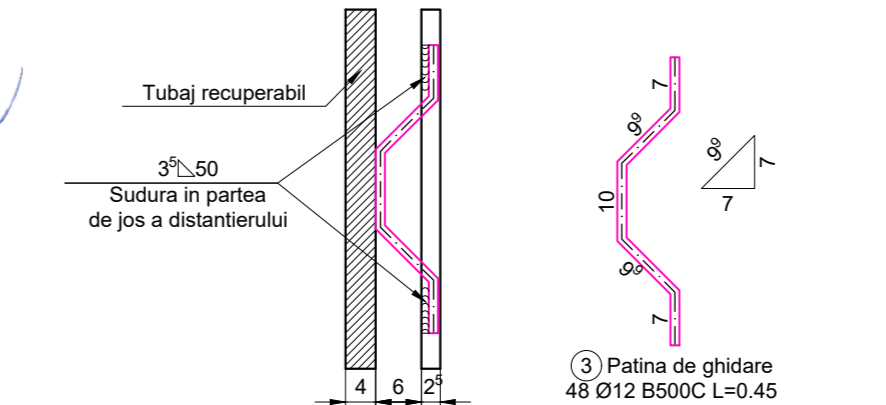


**NOTE:**  
Concrete C25/30 - XC2  
Steel: B500-Ductility class C  
Minimum reinforcement cover: 9 cm  
Reinforcement length is calculated in axis bar.

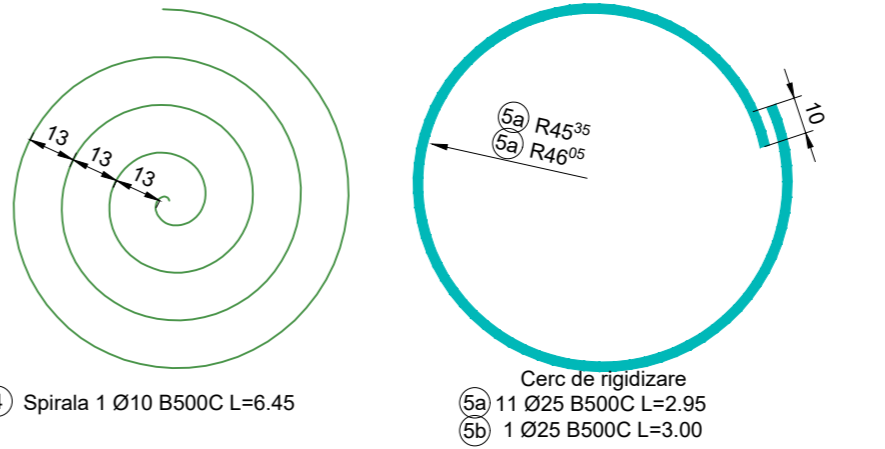
**NOTA:**  
Beton C25/305 - XC2  
Otel: B500-Casa de ductilitate C  
Stratul de acoperire minim cu beton: 9 cm  
Cotarea armaturilor este realizata in axul barelor.

**Nota:**  
- Razele sunt masurate in axul barelor

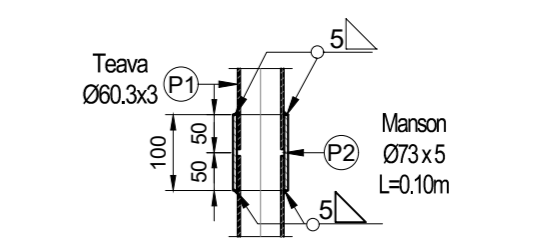
## DETALIU SUDURA PATINA DE GHIDARE



## SPIRALA CERC DE RIGIDIZARE



## Detaliu imbinare tevi



**NOTA:**

- Calitate otel armaturi: B500C
- Calitate otel conectii metalice: S235 JR
- Continuitatea si calitatea betonului dupa turnare vor fi verificate prin metoda carotajului ultrasonic pentru cel putin 30% din numarul total de piloti, dar cel putin pentru un pilot la fiecare fundatie, respectiv prin metoda impedantei mecanice pentru 100% din numarul total de piloti.
- La pilotii la care nu se realizeaza carotaj ultrasonic nu sunt necesare piesele metalice P1 si P2, respectiv colierele marca 6.
- Tehnologia de realizare a pilotului forat considerata este cu tubaj recuperabil.
- Stratul minim de acoperire cu beton a=9cm.
- Pentru a asigura legatura intre tronsoanele de carcasa, cel putin o treime din barele longitudinale din sectiune se vor joanta prin afturi de sudura

### Material metalic control

Reper	Element	Material	Sectiune	Lungime (m)	Buc	Greutate (kg)
P1	Teava	S235 JR	Ø60.3X3	24.50	3	326.31
P2	Manson imbinare	S235 JR	Ø73X5	0.10	6	5.03
P3	Capac	S235 JR	Ø58X5	0.58	3	0.31
<b>TOTAL</b>						<b>331.65</b>

### EXTRAS DE ARMATURA

Marca	Ø (mm)	n (buc.)	L (m)	n x L - B500C				
				Ø10	Ø12	Ø14	Ø25	Ø32
1	32	36	12.00					432.00
2	25	12	3.10				37.20	
3	12	48	0.45		21.60			
4	10	1	6.45	6.45				
5a	25	11	2.95				32.45	
5b	25	1	3.00				3.00	
6	10	36	0.36	12.96				
7	14	1	164.75			164.75		
8	12	1	86.80		86.80			
9	12	1	63.40		63.40			
10	12	1	139.65		139.65			
11	12	1	63.40		63.40			
12	12	1	17.45		17.45			
<b>TOTAL LUNGIMI PE DIAMETRU (m)</b>				19.41	392.30	164.75	72.65	432.00
<b>GREUTATE PE METRU (kg/m)</b>				0.617	0.888	1.208	3.853	6.313
<b>GREUTATE PE DIAMETRU (kg)</b>				11.97	348.29	199.09	279.95	2727.36
<b>GREUTATE TOTALA (kg)</b>				3567.00				
<b>TOTAL pt.</b>				1	<b>BUCATI (kg)</b>		<b>3567.00</b>	

<b>PROIECTANT / DESIGNER:</b> S.C. CONSITRANS S.R.L.	<b>BENEFICIAR / BENEFICIARY:</b> MUNICIPIUL ARAD, MUNICIPIUL ORADEA, CONSILIUL JUDETEAN ARAD, CONSILIUL JUDETEAN BIHOR CNAR	<b>FUNCTIA / POSITION:</b> COORDONATOR DE PROIECT / PROJECT MANAGER	<b>NUME / NAME:</b> ing. S. VEACESLAV	<b>SEMNATURA / SIGNATURE:</b> 	<b>Titlu plansa / Drawing title:</b> Plan armare piloti forati Ø1200, L=23.00m	<b>REV / REV.:</b> R00	<b>DATA / DATE:</b> 11.2023	<b>DETALII REVIZIE / REVISION DETAILS:</b> PTE	<b>PROIECTAT / DESIGNER:</b> Consttrans
<b>INVESTITIA / INVESTMENT:</b> ACTUALIZARE/COMPLETARE/REVIZUIRE (S.F. + P.A.C. + P.O.E + P.T.E.) "DRUM EXPRES ARAD ORADEA"	<b>ACTUALIZATION/COMPLETION (S.F. + P.A.C. + P.O.E + P.T.E.):</b> "EXPRESS ROAD ARAD ORADEA"	<b>SEF PROIECT / SPECIALITATE / TEAM LEADER:</b> ing. D. COVELTIR	<b>SEMNATURA / SIGNATURE:</b> 	<b>Titlu plansa / Drawing title:</b> Pod pe DX la km 45+155 peste Canal / Bridge on DX at km 45+155 over water channel	<b>REV / REV.:</b> R00	<b>DATA / DATE:</b> 11.2023	<b>DETALII REVIZIE / REVISION DETAILS:</b> PTE	<b>PROIECTAT / DESIGNER:</b> Consttrans	
<b>FAZA PROIECTARE / DESIGN STAGE:</b> PROIECT TEHNIC DE EXECUTIE / EXECUTION TECHNICAL PROJECT	<b>PROIECTAT / DESIGNER:</b> ing. V. URDAREANU	<b>SEMNATURA / SIGNATURE:</b> 	<b>Titlu plansa / Drawing title:</b> LUCRARI DE POD / BRIDGE WORKS	<b>REV / REV.:</b> R00	<b>DATA / DATE:</b> 11.2023	<b>DETALII REVIZIE / REVISION DETAILS:</b> PTE	<b>PROIECTAT / DESIGNER:</b> Consttrans		
<b>VERIFICAT / INTERNAL CHECKER:</b> ing. D. COVELTIR	<b>SEMNATURA / SIGNATURE:</b> 	<b>Titlu plansa / Drawing title:</b> Cod plansa / Drawing code: CST-0121-PTE-0-DX-02-P27-APF-01-R00	<b>REV / REV.:</b> R00	<b>DATA / DATE:</b> 11.2023	<b>DETALII REVIZIE / REVISION DETAILS:</b> PTE	<b>PROIECTAT / DESIGNER:</b> Consttrans			