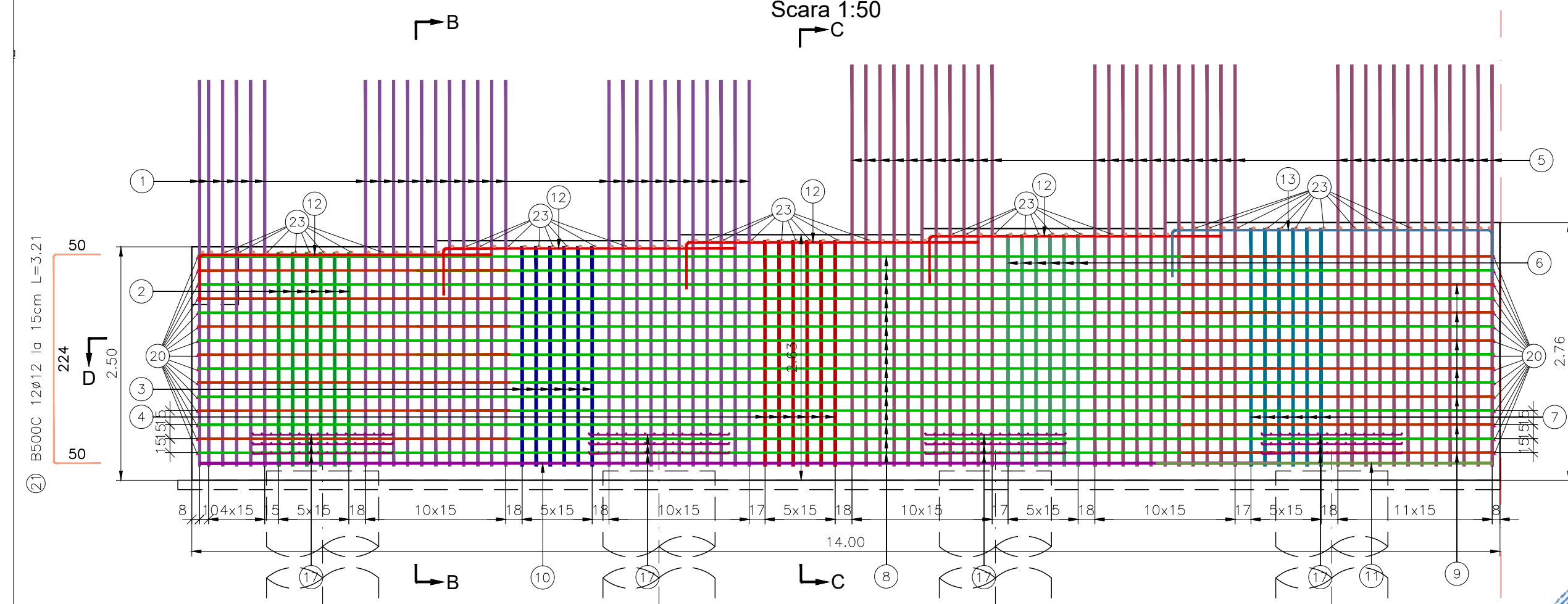
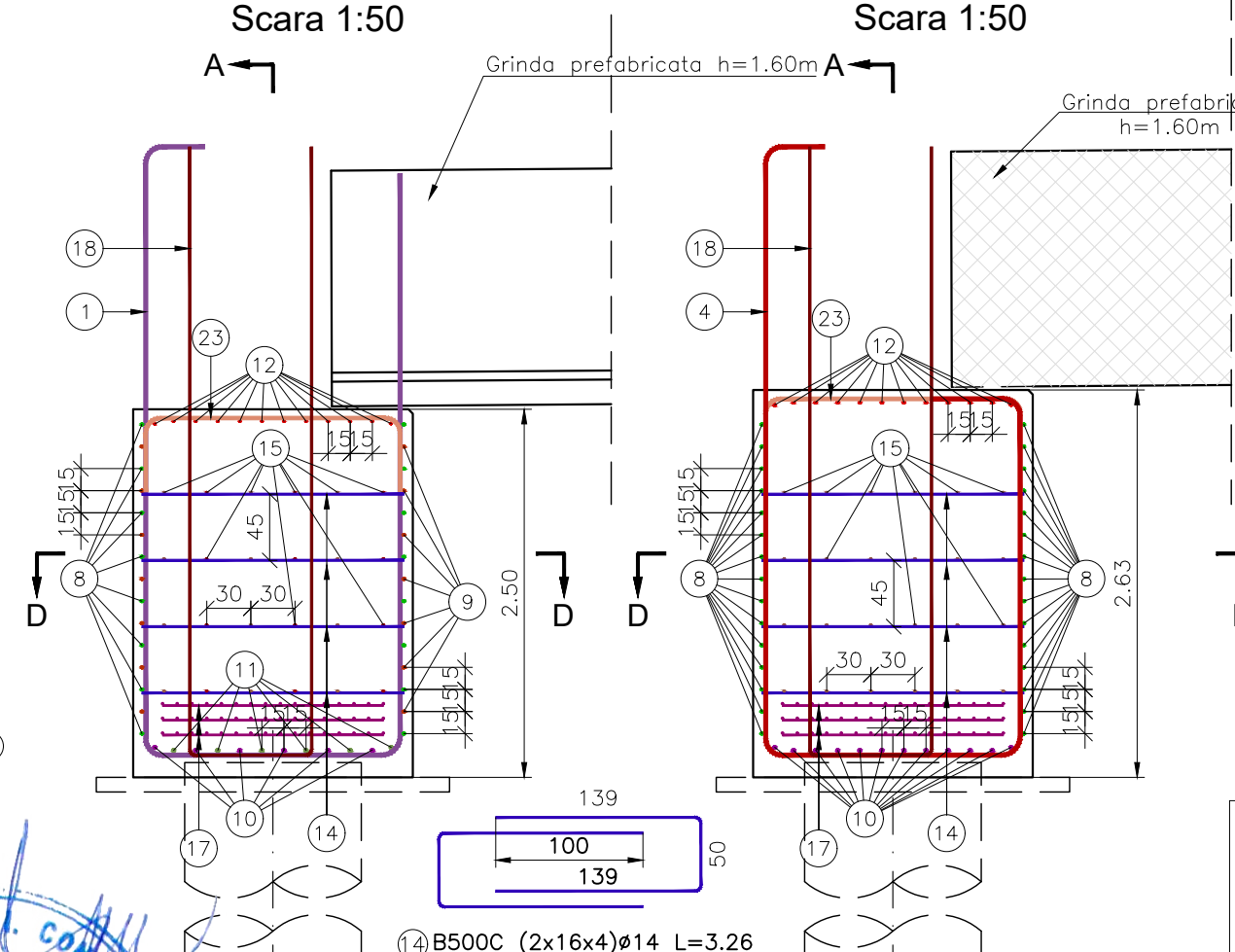


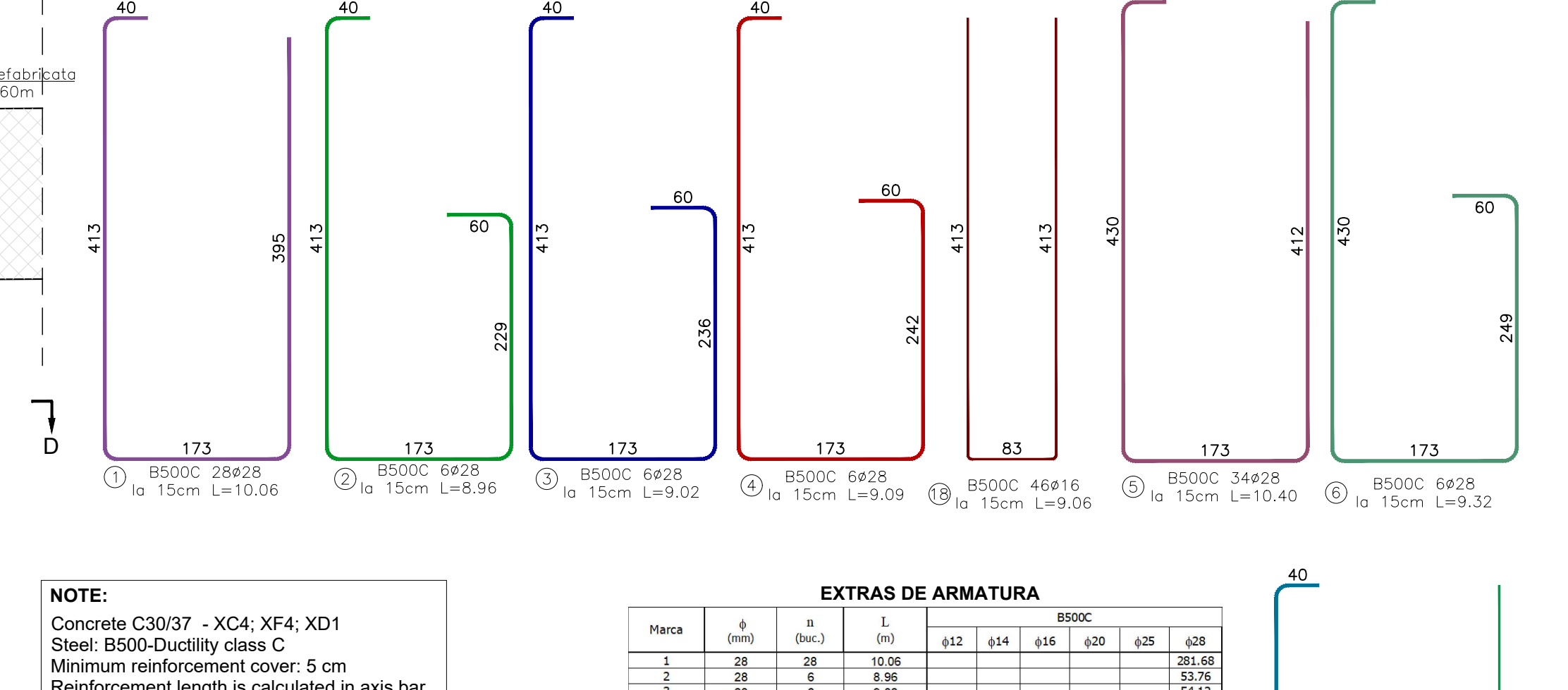
**Sectione A-A**  
Scara 1:50



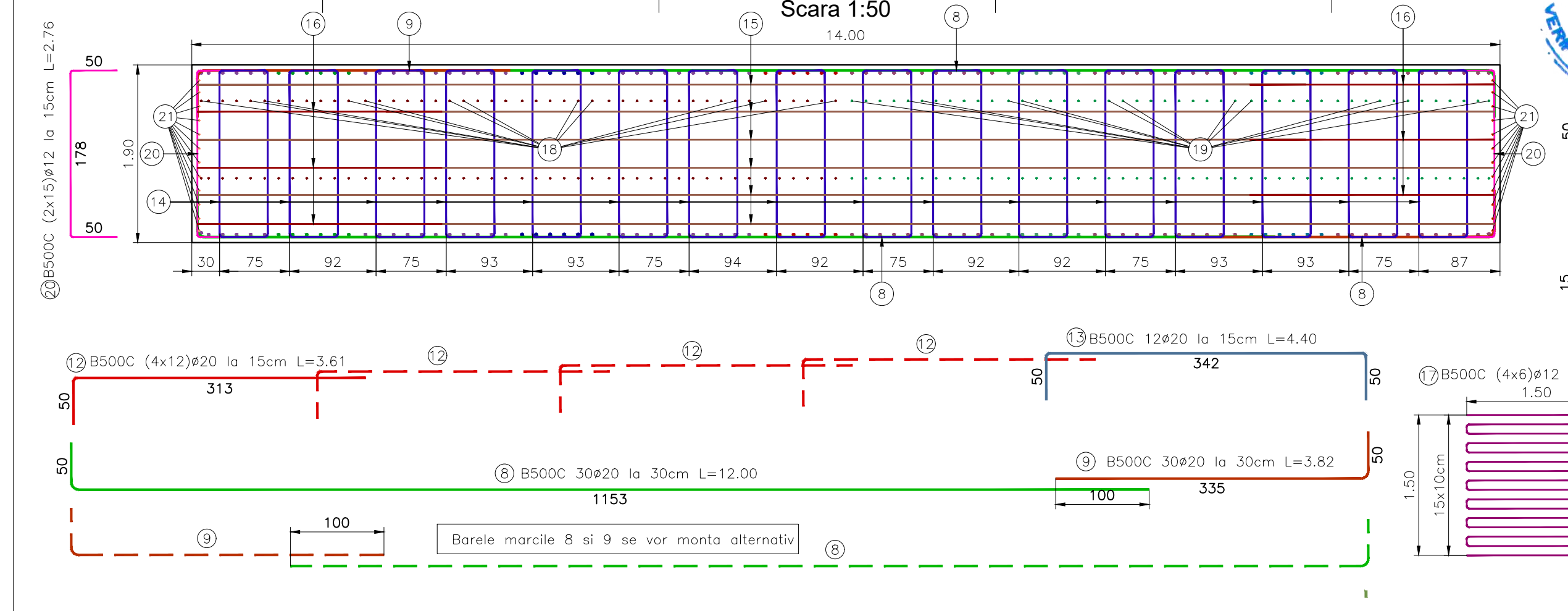
**Sectione B-B**  
Scara 1:50



**Sectione C-C**  
Scara 1:50



**Sectione D-D**  
Scara 1:50



**NOTE:**  
Concrete C30/37 - XC4; XF4; XD1  
Steel: B500-Ductility class C  
Minimum reinforcement cover: 5 cm  
Reinforcement length is calculated in axis bar.

**NOTA:**  
Beton C30/37 - XC4; XF4; XD1  
Otel: B500-Casa de ductilitate C  
Stratul de acoperire minim cu beton: 5 cm  
Cotarea armaturilor este realizata in axul barelor.

**EXTRAS DE ARMATURA**

Marca	φ (mm)	n (buc.)	L (m)	B500C						
				φ12	φ14	φ16	φ20	φ25	φ28	
1	28	28	10.06						281.68	
2	28	6	8.96						53.76	
3	28	6	9.02						54.12	
4	28	6	9.09						54.54	
5	28	34	10.40						353.60	
6	28	6	9.32						55.92	
7	28	6	9.38						56.28	
8	20	30	12.00				360.00			
9	20	30	3.82				114.60			
10	25	12	12.00					144.00		
11	25	12	4.02					48.24		
12	20	48	3.61				173.28			
13	20	12	4.40				52.80			
14	14	128	3.26			417.28				
15	12	24	12.00	288.00						
16	12	24	2.76	66.24						
17	12	24	25.15	603.60						
18	16	46	9.06			416.76				
19	16	46	9.40			432.40				
20	12	30	2.76	82.80						
21	12	12	3.21	38.52						
22	12	12	3.47	41.64						
23	25	92	2.65				243.80			
<b>TOTAL LUNGIMI PE DIAMETRU (m)</b>				1120.80	417.28	849.16	700.68	436.04	909.90	
<b>GREUTATE PE METRU (kg/m)</b>				0.883	1.208	1.578	2.466	3.853	4.834	
<b>GREUTATE PE DIAMETRU (kg)</b>				995.06	504.25	1340.26	1727.98	1680.22	4398.14	
<b>GREUTATE PE TIP OTEL (kg)</b>							10646.00			
<b>GREUTATE TOTALA (kg)</b>							10646.00			
<b>GREUTATE TOTALA PT 4 BUCATI ASEMENEA (kg)</b>							42584.00			

<b>PROIECTANT / DESIGNER:</b> S.C. CONSITRANS S.R.L.	<b>BENEFICIAR / BENEFICIARY:</b> MUNICIPIUL ARAD, MUNICIPIUL ORADEA, CONSILIUL JUDETEAN ARAD, CONSILIUL JUDETEAN BIHOR CNAIR	<b>FUNCTIA / POSITION:</b> COORDONATOR DE PROIECT / PROJECT MANAGER	<b>NUME / NAME:</b> ing. S. VEACESLAV	<b>SEMNATURA / SIGNATURE:</b> <i>[Signature]</i>	<b>Titlu plansa / Drawing title:</b> Plan armare elevatie culee Abutment reinforcement plan	<b>REV / REV.</b> R00	<b>DATA / DATE:</b> 11.2023	<b>DETALI REVIZIE / REVISION DETAILS:</b> PTE	<b>PROIECTAT / DESIGNER:</b> Consitrans
<b>INVESTITIA / INVESTMENT:</b> ACTUALIZARE/COMPLETARE/REVIZUIRE (S.F. + P.A.C. + P.O.E. + P.T.E.) "DRUM EXPRES ARAD ORADEA"	<b>ACTUALIZAREA/COMPLETAREA/REVIZUIRE (S.F. + P.A.C. + P.O.E. + P.T.E.)</b> "EXPRESS ROAD ARAD ORADEA"	<b>SEF PROIECT SPECIALITATE / TEAM LEADER:</b> ing. D. COVELTIR	<b>PROIECTAT / DESIGNER:</b> ing. V. URDAREANU	<b>SEMNATURA / SIGNATURE:</b> <i>[Signature]</i>	<b>Pod pe DX peste Canal la km 50+095</b> Bridge on DX over Channel at km 50+095				
<b>FAZA PROIECTARE / DESIGN STAGE:</b> PROIECT TEHNIC DE EXECUTIE / EXECUTION TECHNICAL PROJECT	<b>PROIECTAT / DESIGNER:</b> ing. D. COVELTIR	<b>VERIFICAT / INTERNAL CHECKER:</b> ing. D. COVELTIR	<b>SEMNATURA / SIGNATURE:</b> <i>[Signature]</i>	<b>Titlu plansa / Drawing code:</b> CST-0121-PTE-0-DX-02-P31-AEC-01-R00					
<b>Contract /Contract:</b> 14724/01.07.2021	<b>Data /Date:</b> 11.2023	<b>Scara /Scale:</b> 1:50	<b>UNILINEA EUROPEANA</b> PROIECT CO-FINANAT DIN FONDUL DE COEZIUNE, PRIN PROGRAMUL OPERATIONAL INFRASTRUCTURA MARE / PROJECT CO-FINANANCED FROM THE COHESION FUND, THROUGH THE LARGE INFRASTRUCTURE OPERATIONAL PROGRAM	<b>VERIFICAT / INTERNAL CHECKER:</b> ing. D. COVELTIR					