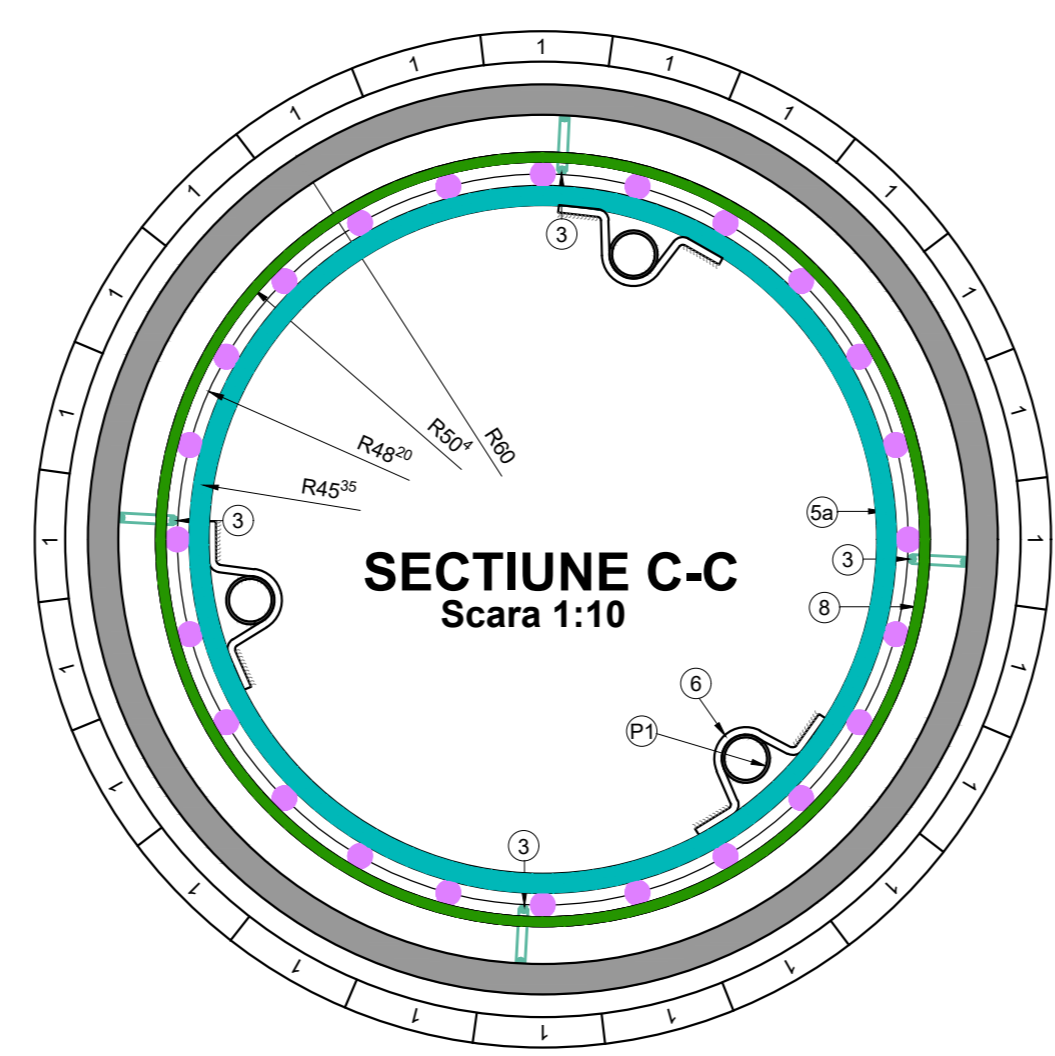
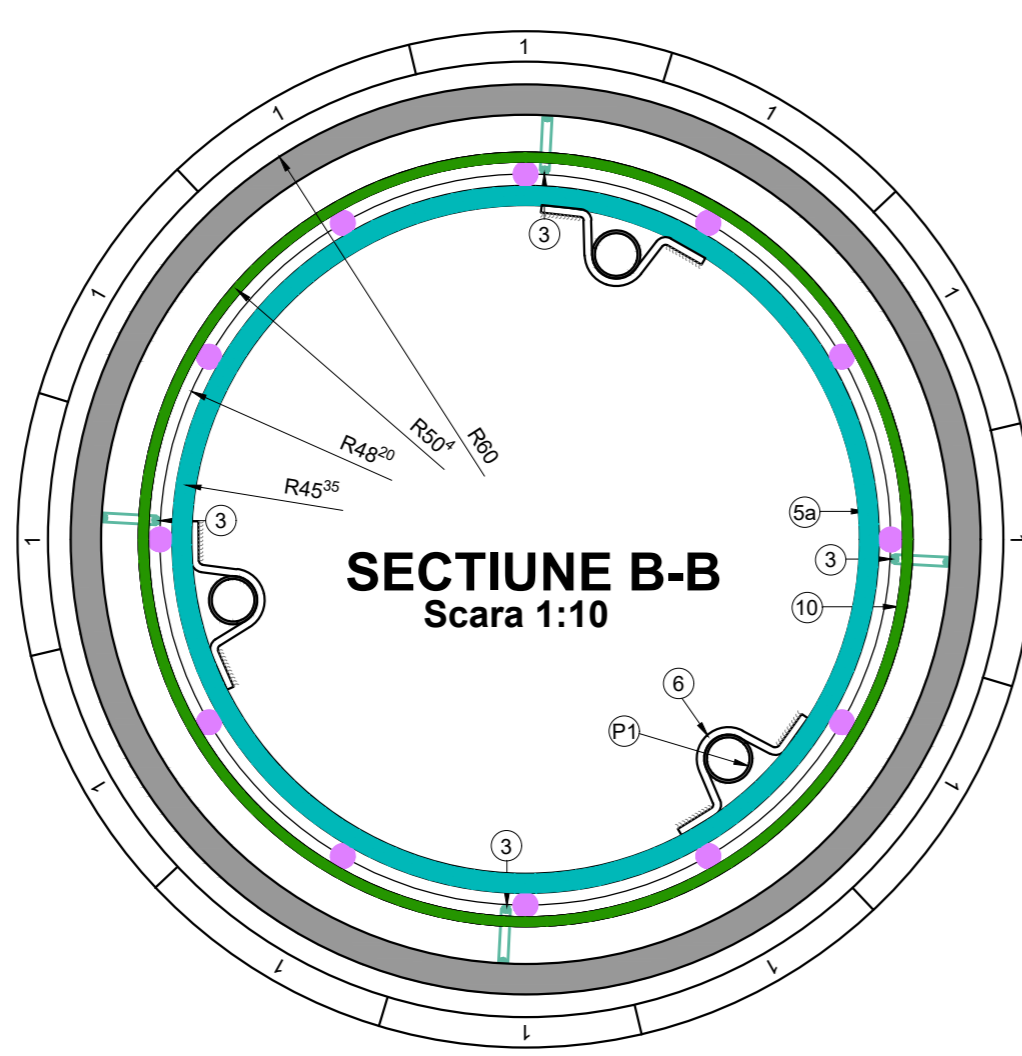
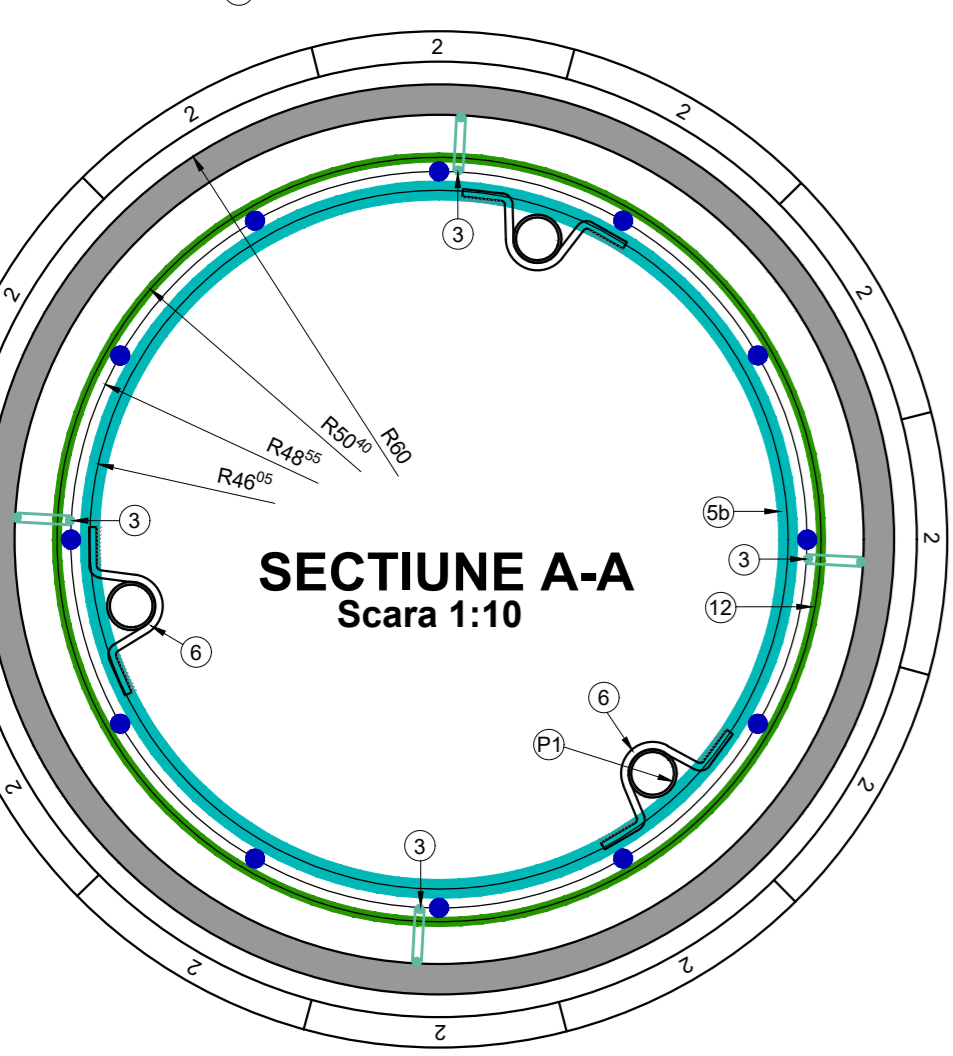
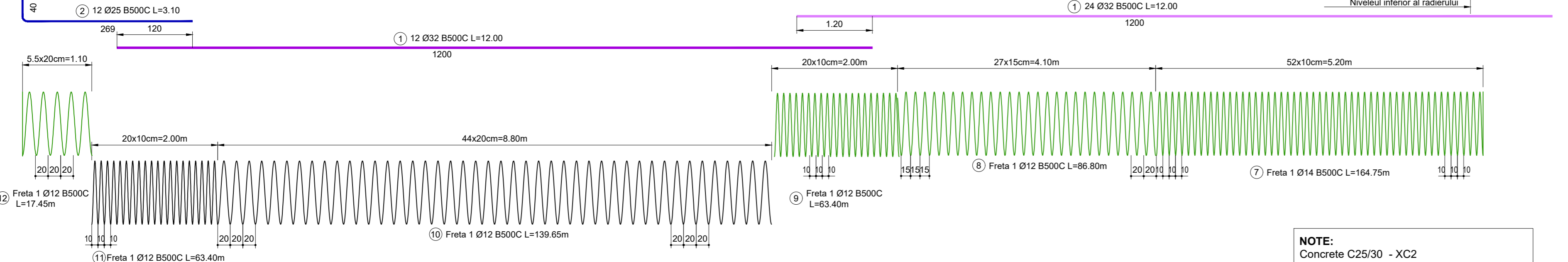
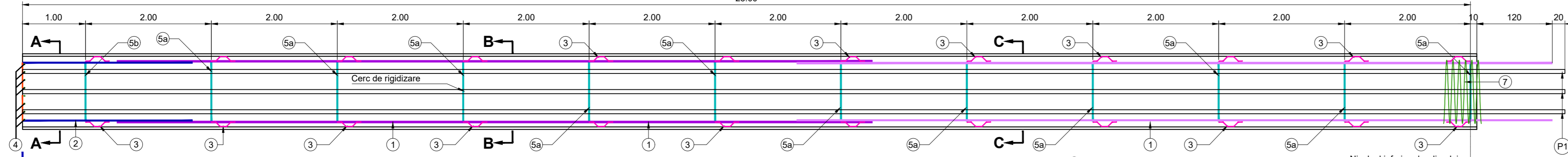


SECTIUNE LONGITUDINALA

Scara 1:50
23.00

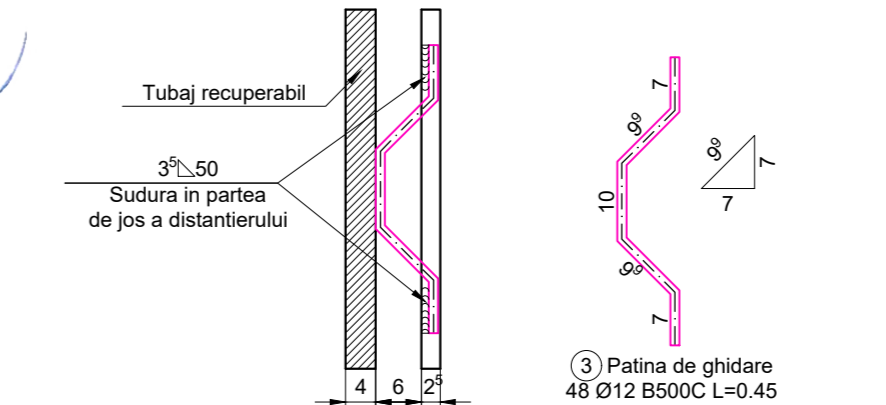


NOTE:
Concrete C25/30 - XC2
Steel: B500-Ductility class C
Minimum reinforcement cover: 9 cm
Reinforcement length is calculated in axis bar.

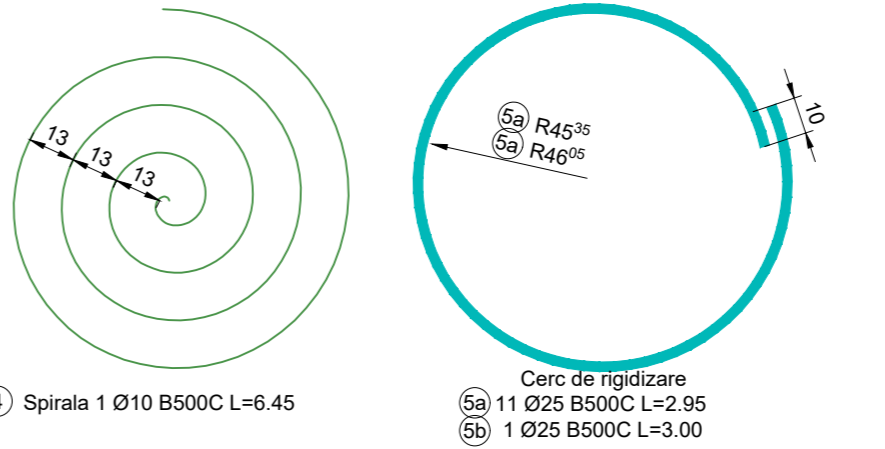
NOTA:
Beton C25/305 - XC2
Otel: B500-Casa de ductilitate C
Stratul de acoperire minim cu beton: 9 cm
Cotarea armaturilor este realizata in axul barelor.

Nota:
- Razele sunt masurate in axul barelor

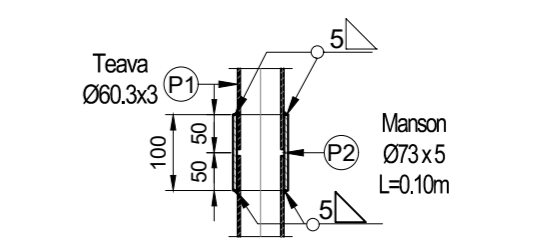
DETALIU SUDURA PATINA DE GHIDARE



SPIRALA CERC DE RIGIDIZARE



Detaliu imbinare tevi



NOTA:

- Calitate otel armaturi: B500C
- Calitate otel conectii metalice: S235 JR
- Continuitatea si calitatea betonului dupa turnare vor fi verificate prin metoda carotajului ultrasonic pentru cel putin 30% din numarul total de piloti, dar cel putin pentru un pilot la fiecare fundatie, respectiv prin metoda impedantei mecanice pentru 100% din numarul total de piloti.
- La pilotii la care nu se realizeaza carotaj ultrasonic nu sunt necesare piesele metalice P1 si P2, respectiv colierele marca 6.
- Tehnologia de realizare a pilotului forat considerata este cu tubaj recuperabil.
- Stratul minim de acoperire cu beton a=9cm.
- Pentru a asigura legatura intre tronsoanele de carcasa, cel putin o treime din barele longitudinale din sectiune se vor joanta prin afturi de sudura

Material metalic control

Reper	Element	Material	Sectiune	Lungime (m)	Buc	Greutate (kg)
P1	Teava	S235 JR	Ø60.3X3	24.50	3	326.31
P2	Manson imbinare	S235 JR	Ø73X5	0.10	6	5.03
P3	Capac	S235 JR	Ø58X5	0.58	3	0.31
TOTAL						331.65

EXTRAS DE ARMATURA

Marca	Ø (mm)	n (buc.)	L (m)	n x L - B500C				
				Ø10	Ø12	Ø14	Ø25	Ø32
1	32	36	12.00					432.00
2	25	12	3.10				37.20	
3	12	48	0.45		21.60			
4	10	1	6.45	6.45				
5a	25	11	2.95				32.45	
5b	25	1	3.00				3.00	
6	10	36	0.36	12.96				
7	14	1	164.75			164.75		
8	12	1	86.80		86.80			
9	12	1	63.40		63.40			
10	12	1	139.65		139.65			
11	12	1	63.40		63.40			
12	12	1	17.45		17.45			
TOTAL LUNGIMI PE DIAMETRU (m)				19.41	392.30	164.75	72.65	432.00
GREUTATE PE METRU (kg/m)				0.617	0.888	1.208	3.853	6.313
GREUTATE PE DIAMETRU (kg)				11.97	348.29	199.09	279.95	2727.36
GREUTATE TOTALA (kg)				3567.00				
TOTAL pt.				1	BUCATI (kg)		3567.00	

PROIECTANT / DESIGNER: S.C. CONSITRANS S.R.L.	BENEFICIAR / BENEFICIARY: MUNICIPIUL ARAD, MUNICIPIUL ORADEA, CONSILIUL JUDETEAN ARAD, CONSILIUL JUDETEAN BIHOR CNAR	FUNCTIA / POSITION: COORDONATOR DE PROIECTI / PROJECT MANAGER	NUME / NAME: ing. S. VEACESLAV	SEMNATURA / SIGNATURE: 	Titlu plansa / Drawing title: Plan armare piloti forati Ø1200, L=23.00m	REV / REV. R00	DATA / DATE: 11.2023	DETALII REVIZIE / REVISION DETAILS: PTE	PROIECTAT / DESIGNER: Consttrans
INVESTITIA / INVESTMENT: ACTUALIZARE/COMPLETARE/REVIZUIRE (S.F. + P.A.C. + P.O.E + P.T.E.) "DRUM EXPRES ARAD ORADEA"	ACTUALIZATION/COMPLETION (S.F. + P.A.C. + P.O.E + P.T.E.): "EXPRESS ROAD ARAD ORADEA"	SEF PROIECT / SPECIALITATE / TEAM LEADER: ing. D. COVELTIR	SEMNATURA / SIGNATURE: 	Titlu plansa / Drawing title: Pod pe DX la km 53+415 peste Valea Foca / Bridge on DX at km 53+415 over Foca	REV / REV. R00	DATA / DATE: 11.2023	DETALII REVIZIE / REVISION DETAILS: PTE	PROIECTAT / DESIGNER: Consttrans	
FAZA PROIECTARE / DESIGN STAGE: PROIECT TEHNIC DE EXECUTIE / EXECUTION TECHNICAL PROJECT	PROIECTAT / DESIGNER: ing. V. URDAREANU	SEMNATURA / SIGNATURE: 	Titlu plansa / Drawing title: LUCRARI DE POD / BRIDGE WORKS	REV / REV. R00	DATA / DATE: 11.2023	DETALII REVIZIE / REVISION DETAILS: PTE	PROIECTAT / DESIGNER: Consttrans		
VERIFICAT / INTERNAL CHECKER: ing. D. COVELTIR	SEMNATURA / SIGNATURE: 	Titlu plansa / Drawing title: Cod plansa / Drawing code: CST-0121-PTE-0-DX-02- P34-APF-01-R00	REV / REV. R00	DATA / DATE: 11.2023	DETALII REVIZIE / REVISION DETAILS: PTE	PROIECTAT / DESIGNER: Consttrans			