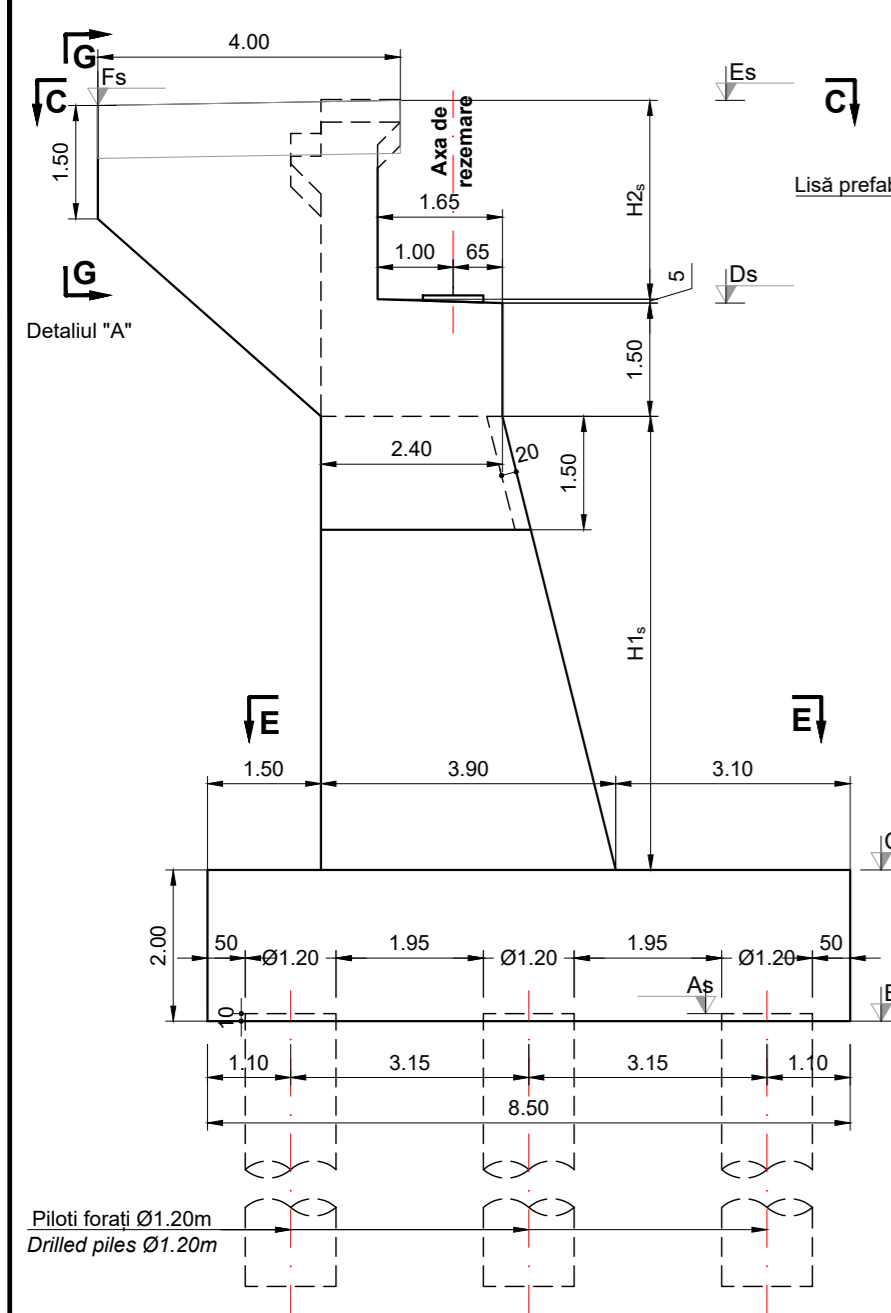
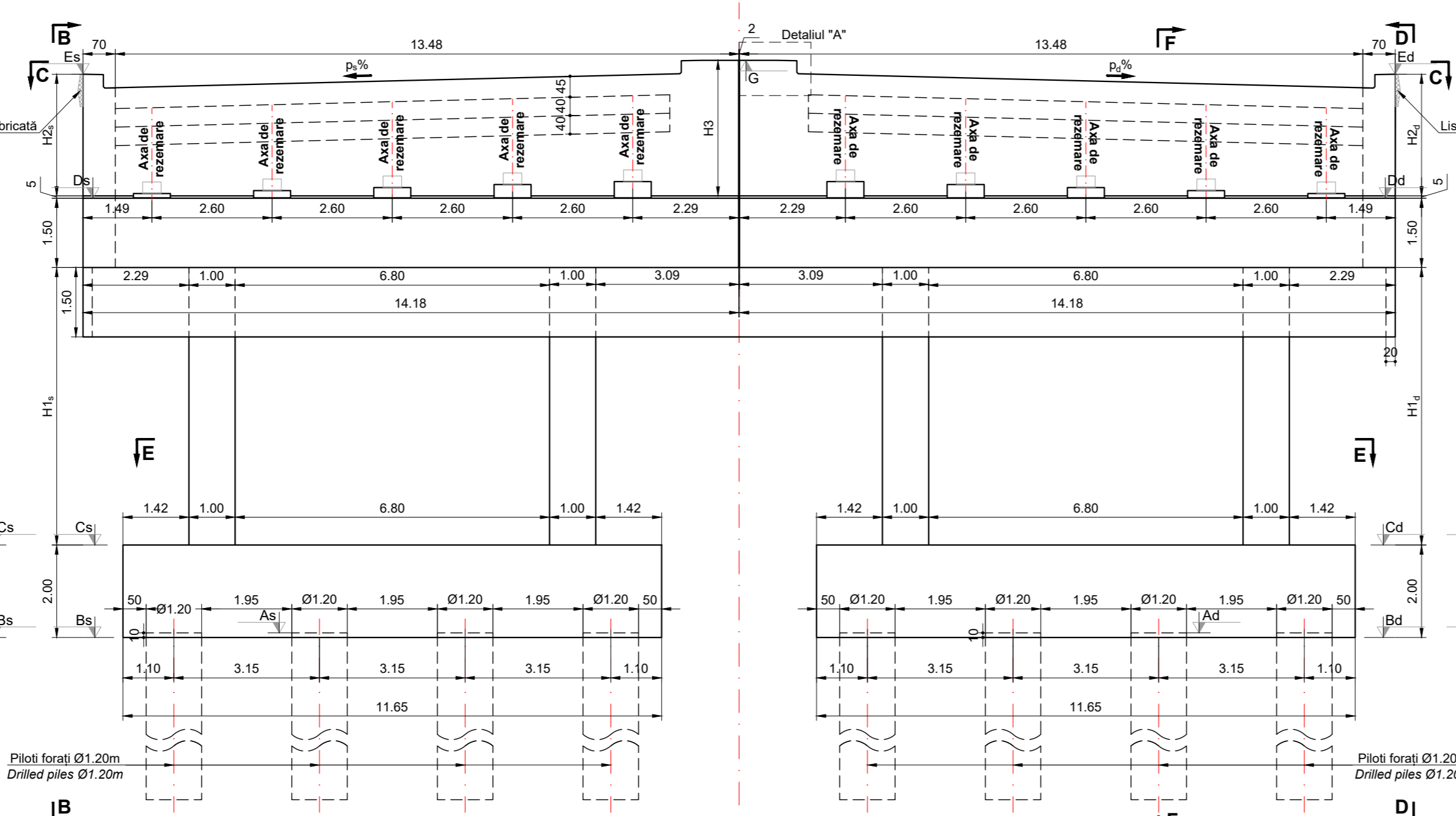


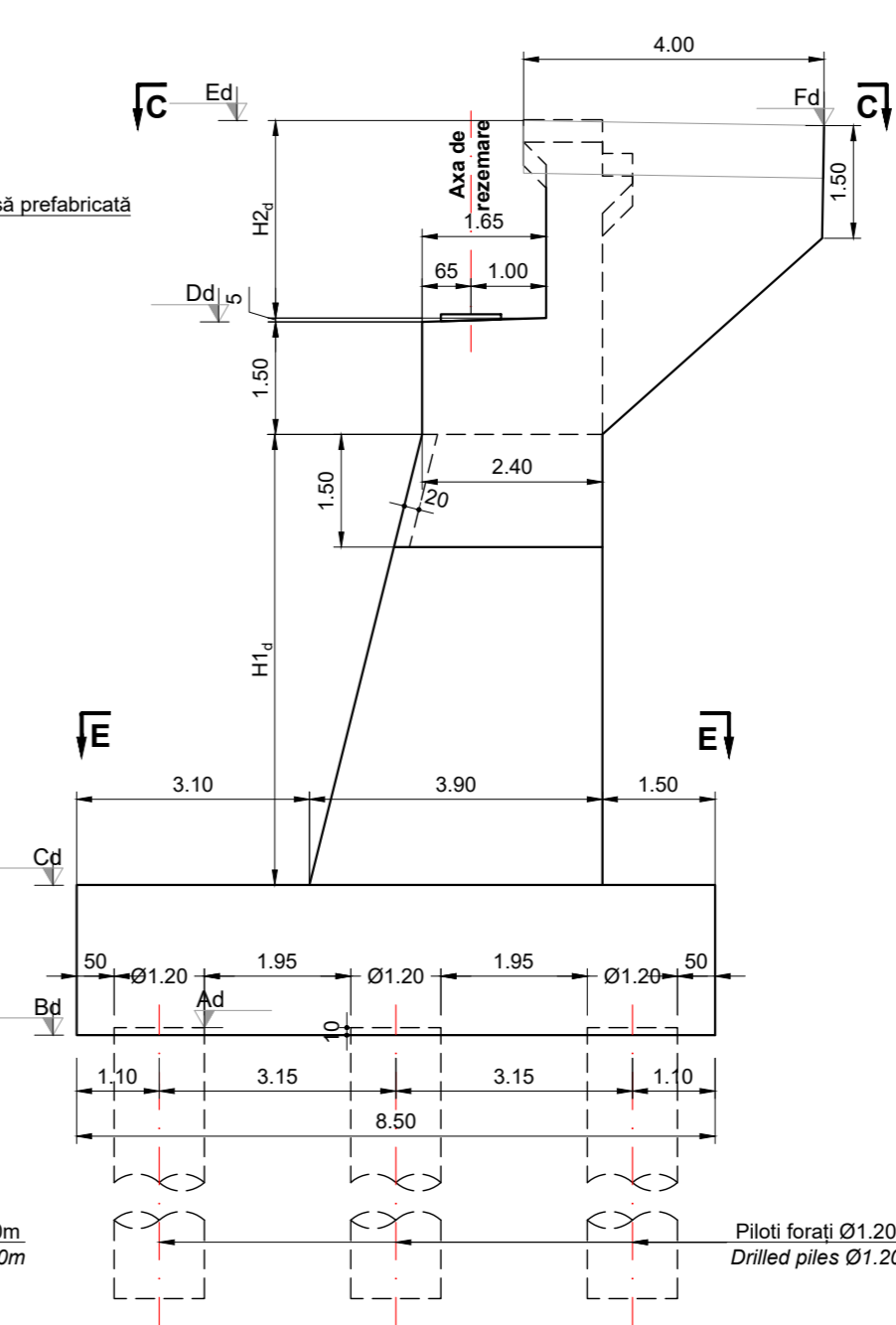
Vedere laterală B - B
Scara 1:100



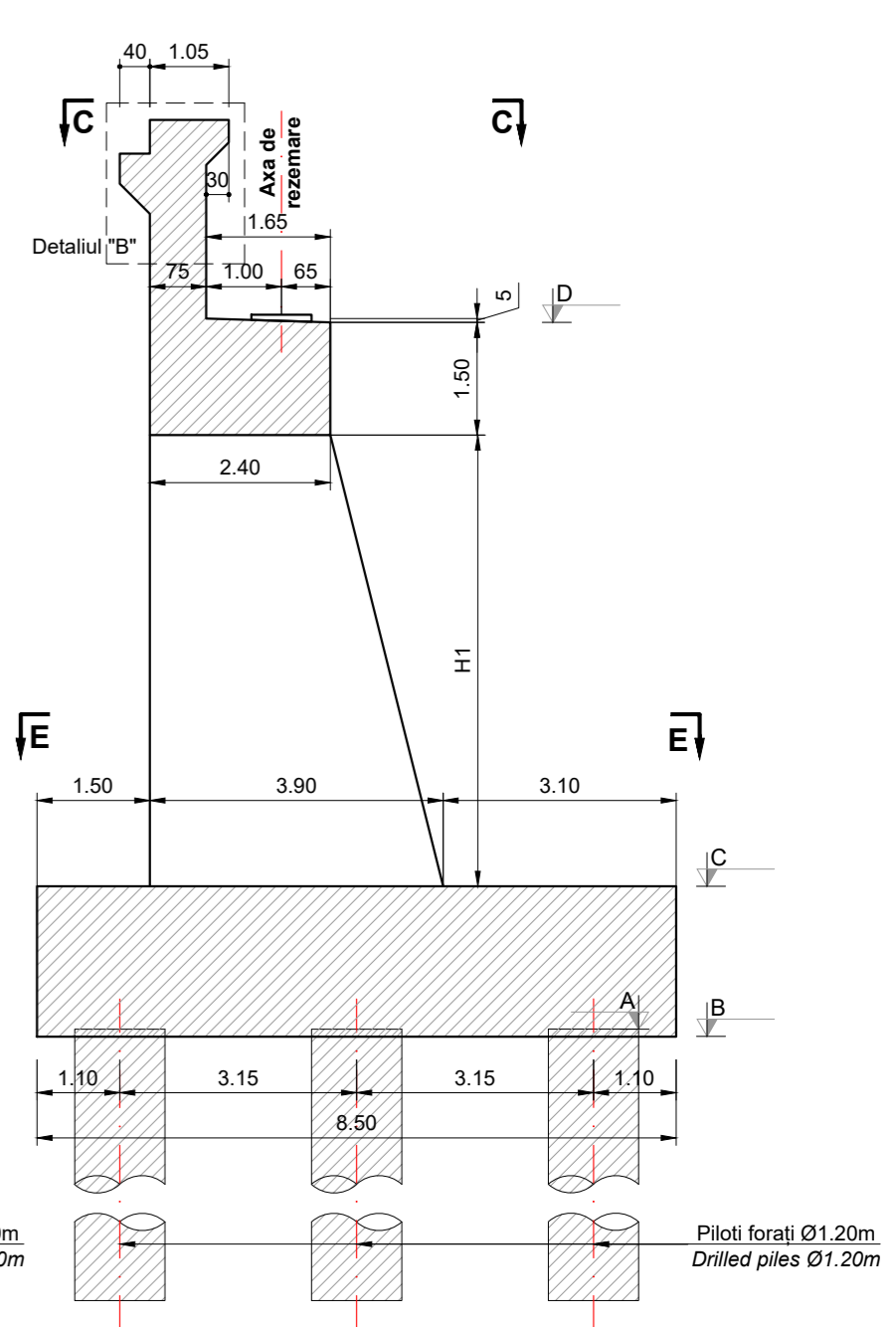
Vedere din față A - A
Scara 1:100



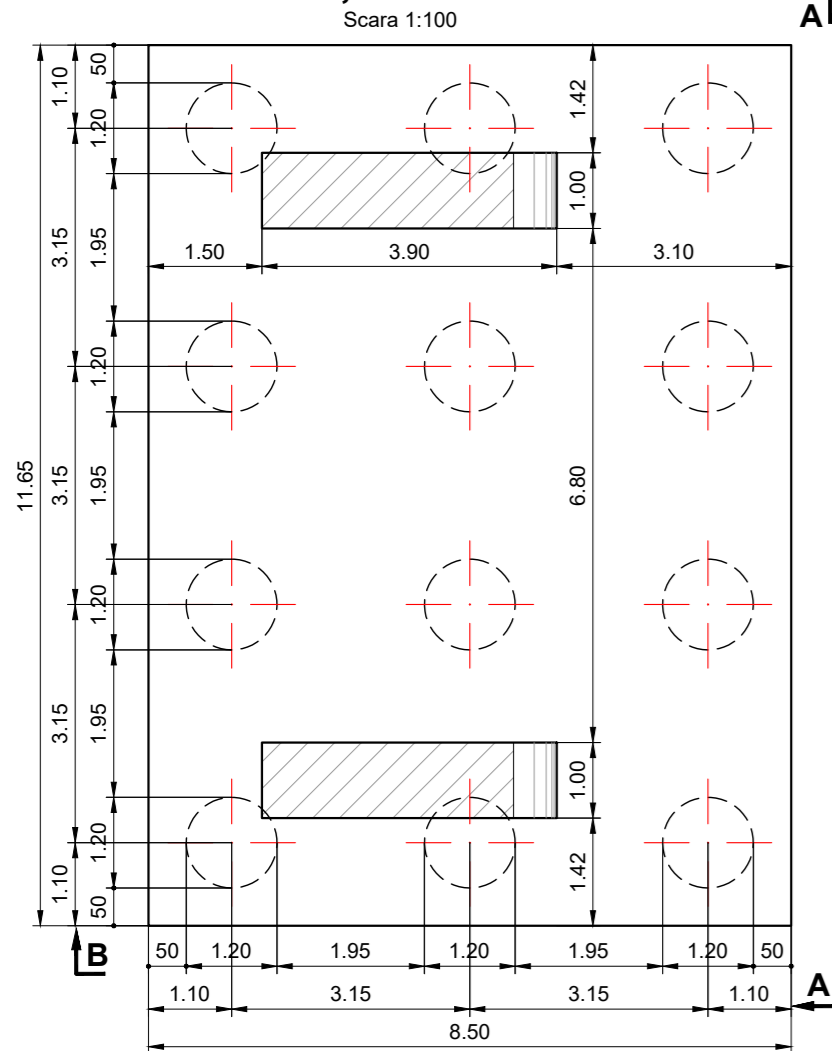
Vedere laterală D - D
Scara 1:100



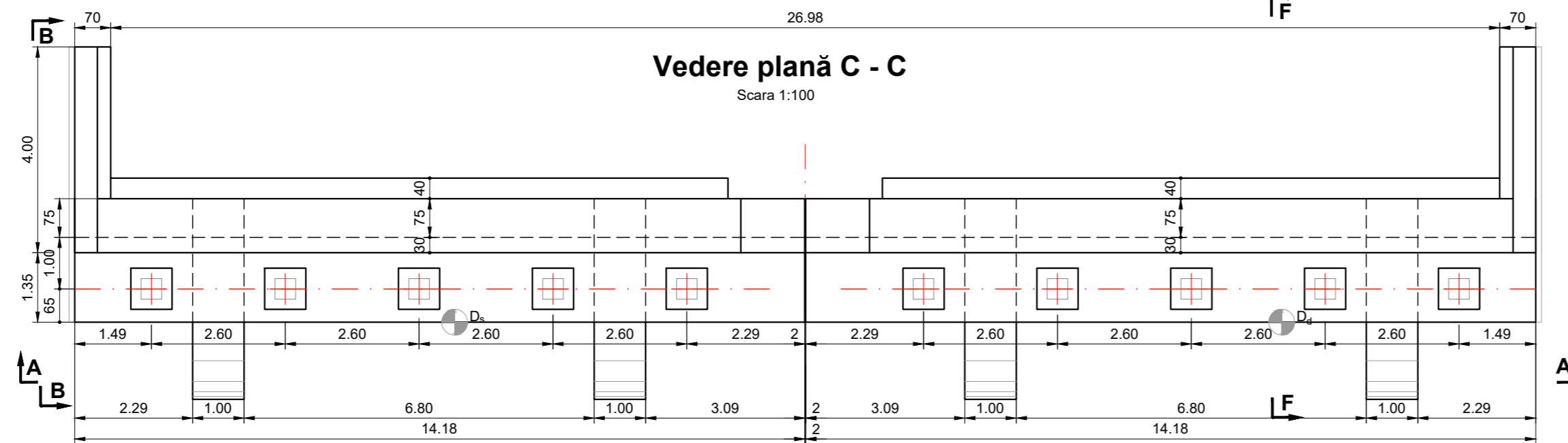
Secțiune transversală F - F
Scara 1:100



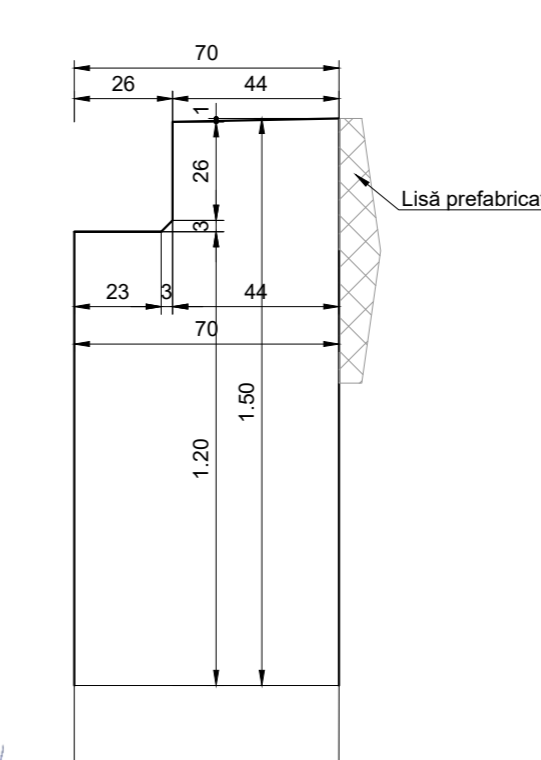
Secțiune E - E
Scara 1:100



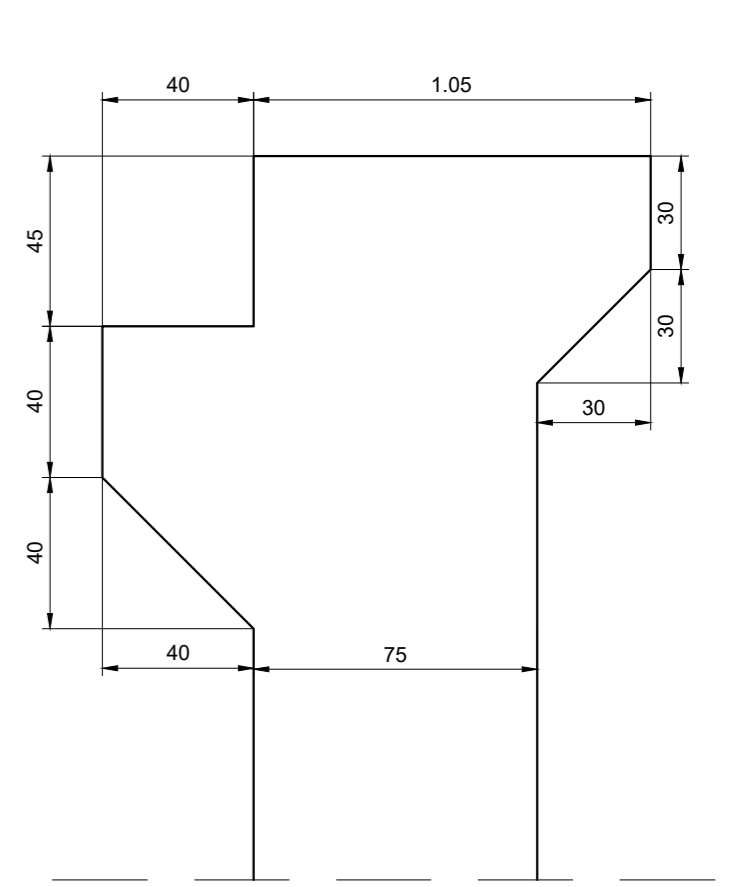
Vedere plană C - C
Scara 1:100



Vedere "G-G"
Scara 1:20

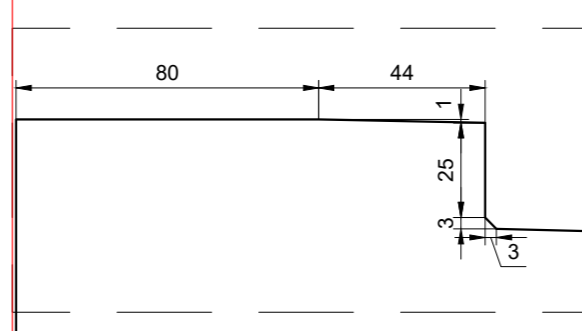


Detaliul "B"
Scara 1:20



Culee	Inaltime						Cote de nivel													
	H _{1s}	H _{2s}	H _{3s}	H _{20s}	H _{1d}	H _e	As	Bs	Cs	Ds	Es	Fs	G	Ad	Bd	Cd	Dd	Ed	Fd	G
Culee 1	7.00	2.32	2.67	2.62	7.00	8.50	88.50	88.40	90.40	98.90	101.27	101.22	101.57	88.20	88.10	90.10	98.60	101.27	101.22	101.57
Culee 2	7.00	2.31	2.66	2.62	7.00	8.50	88.42	88.32	90.32	98.82	101.18	101.13	101.48	88.11	88.01	90.01	98.51	101.18	101.13	101.48

Detaliul "A"
Scara 1:20



Materiale						
Beton						
Element	Clasa de rezistența	Clasa de expunere	Raport A/C	Clasa de cloruri	Dozaj ciment [kg]	D _{max} [mm]
Beton egalizare	C12/15	X0	-	1.00	-	32
Piloti forati	C25/30	XC2	0.55	0.20	375	22.4
Radiere	C25/30	XC2; XF2	0.55	0.20	300	32
Elevatii	C30/37	XC4; XF4; XD1	0.45	0.20	340	32



PROIECTANT / DESIGNER: S.C. CONSITRANS S.R.L.	BENEFICIAR / BENEFICIARY: MUNICIPIUL ARAD, MUNICIPIUL JUDETEAN ARAD, CONSILIUL JUDETEAN BIHOR, CONSILIUL JUDETEAN CNAIR	FUNCTIA / POSITION: COORDONATOR DE PROIECT / PROJECT MANAGER	NUME / NAME: ing. S. VEACESLAV	SEMNATURA / SIGNATURE: 	Titlu plansa / Drawing title: Plan cofraj culee C1, C2 Abutment formwork C1, C2	REV / REV. R00	DATA / DATE: 11.2023	DETALII REVIZIE / REVISION DETAILS: Proiect Tehnic de Executie	PROIECTAT / DESIGNER: Consitrans
INVESTITIA / INVESTMENT: ACTUALIZARE/COMPLETARE/REVIZUIRE (S.F. + P.A.C. + P.O.E. + P.T.E.) "DRUM EXPRESS ARAD ORADEA" ACTUALIZATION/COMPLETION (S.F. + P.A.C. + P.O.E. + P.T.E.) "EXPRESS ROAD ARAD ORADEA"	FAZA PROIECTARE / DESIGN STAGE: PROIECT TEHNIC DE EXECUTIE / EXECUTION TECHNICAL PROJECT	PROIECTAT / DESIGNER: ing. V. URDAREANU	SEMNATURA / SIGNATURE: 	Titlu plansa / Drawing title: Pasaj pe DL HU la km 4+870 peste CF si DN79B Bridge on DL HU at km 4+870 over CF and DN79B	REV / REV. 	DATA / DATE: 	DETALII REVIZIE / REVISION DETAILS: 	PROIECTAT / DESIGNER: 	
UNIUNEA EUROPEANA PROIECT CO-FINANȚAT DIN FONDUL DE COEZIUNE, PRIN PROGRAMUL OPERATIONAL INFRASTRUCTURA MARE / PROJECT CO-FINANCED FROM THE COHESION FUND THROUGH THE LARGE INFRASTRUCTURE OPERATIONAL PROGRAM	Contract / Contract: 14724/01.07.2021 Project / Project no.: 001/2021	Data / Date: 11.2023	Scara / Scale: 1:100 / 1:20	VERIFICAT / INTERNAL CHECKER: ing. D. COVELTIR	SEMNATURA / SIGNATURE: 	REV / REV. 	DATA / DATE: 	DETALII REVIZIE / REVISION DETAILS: 	PROIECTAT / DESIGNER:
Cod plansa / Drawing code: CST-0121-PTE-0-DX- 02-P67-CPC-01-R00									