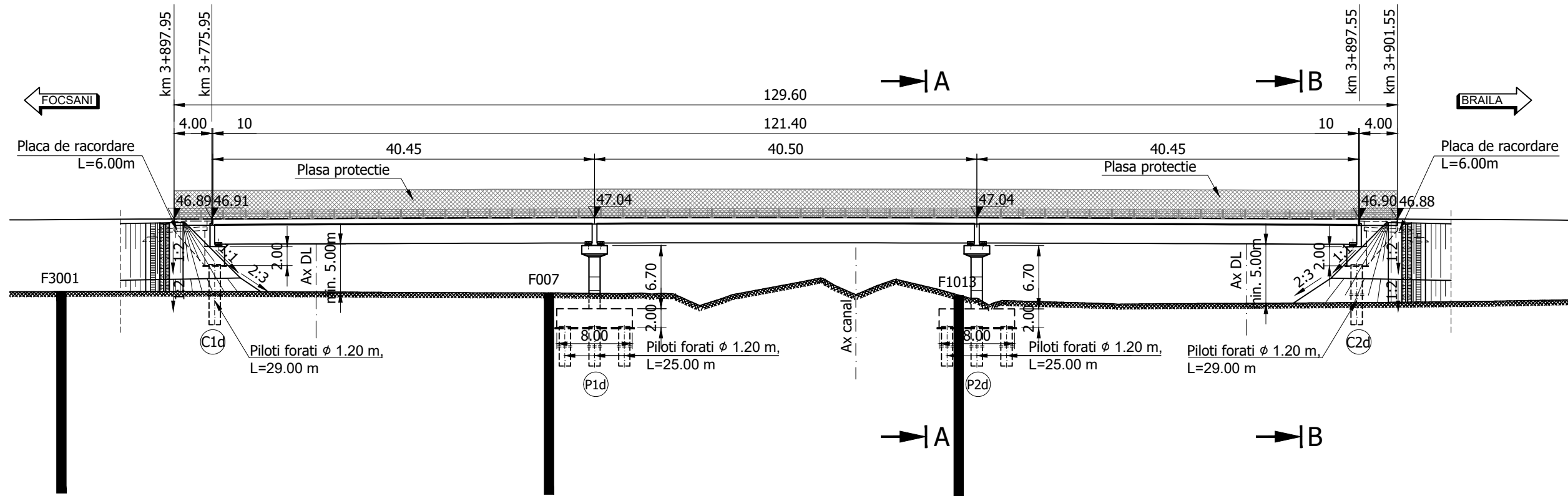


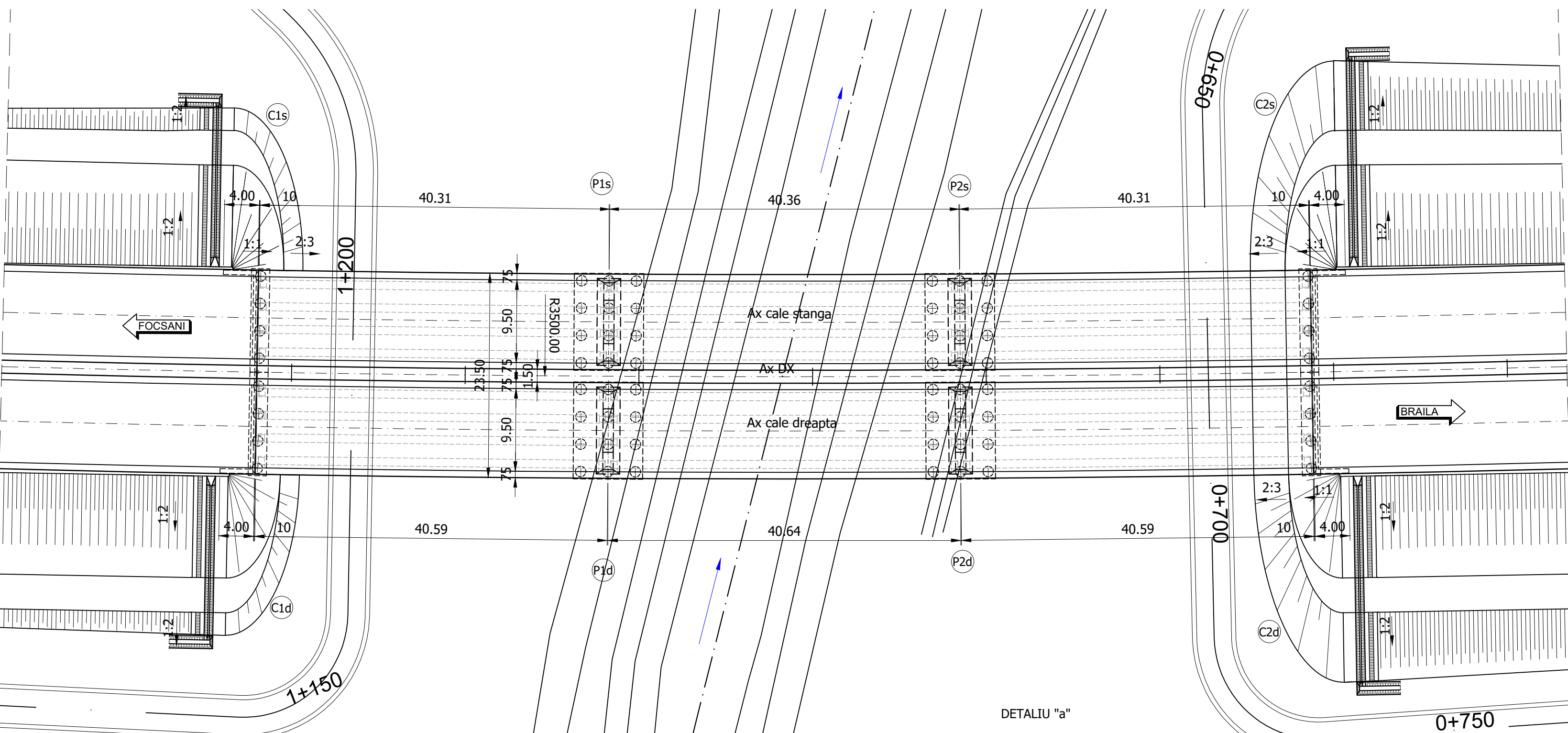
ELEVATIE

Sc. 1:500



VEDERE PLANA

Sc. 1:500



DETALIU "a"

- Mixtura asfaltica stabilizata MAS16 - 4 cm
- Beton asfaltic pentru poduri BAP16 - 4 cm
- Protectie hidroizolatie BA8 - 3 cm
- Hidroizolatie
- Placa de suprabetonare C35/45

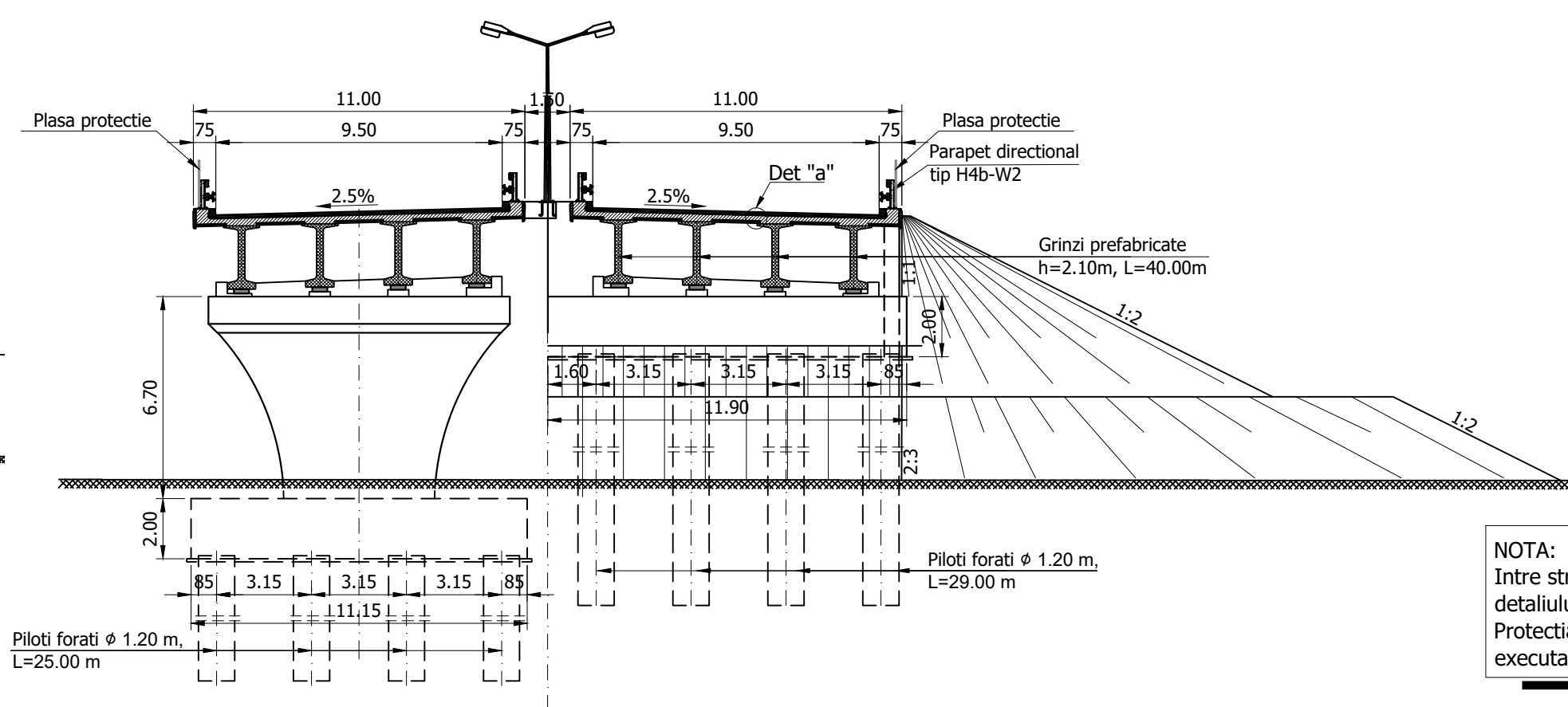
Convoi de calcul: LM1, LM2, conf. SR EN 1991-2/2005
 Categorie de importanta: "B"
 Exigente de verificare: A4, B2, D
 Parametri seismici: $a_g=0.35g$, $T_c=1.00s$ conf. cod P100/1-2013, SR EN 1998-2/2006

SECTIUNE TRANSVERSALA A-A

Sc. 1:200

SECTIUNE TRANSVERSALA B-B

Sc. 1:200



MATERIALE

1. Beton cf. CP 012/2007

Element constructiv	Beton	Clasa de expunere	Tasare	A/C	Ciment	Armatura
Beton egalizare	C8/10	XF1	-	-	-	-
Pereu	C25/30	XC4;XF2	S4	0.500	300	-
Piloti	C20/25	XC2	S4	0.60	375	B500SC/BS7500SC
Radier	C30/37	XC4;XF2;XD1	S3	0.55	300	B500SC/BS7500SC
Elevatii	C30/37	XC4;XF2;XD1	S3	0.55	300	B500SC/BS7500SC
	C35/45	XC4;XF2;XD3	S3	0.50	320	B500SC/BS7500SC
Placi racordare / Grinda rezemare	C20/25	XC2	S4	0.60	260	B500SC/BS7500SC
Grinda prefabricata post-tensionata	C45/55	XC4;XD1;XF2	S4	0.40	320	B500SC/BS7500SC
Grinda prefabricata post-tensionata	C50/60	XC4;XD1;XF2	S4	0.40	320	B500SC/BS7500SC
Placa suprabetonare / Borduri	C35/45	XC4;XF4;XD3	S3	0.50	340	B500SC/BS7500SC
Predale prefabricate	C35/45	XC4;XD1;XF4	S4	0.50	340	B500SC/BS7500SC
Prefabricat grinda parapet	C35/45	XC4;XD3;XF4	S4	0.45	340	B500SC/BS7500SC

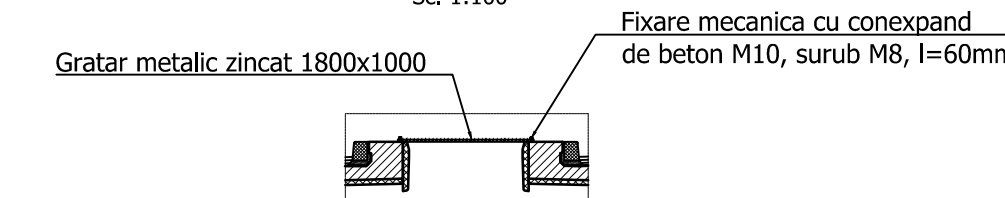
2. Otel

Armatura moale	B500SC/BS7500SC
Armatura pretensionata	TBP Y 1860S7
Otel tablari metalic	S355NL / S355J2+N, echivalent OL52EP

NOTA:
 Intre structurile juxtapuse se vor monta plase de protectie orizontale, conform detaliului alaturat, pe toata lungimea suprastructurii (golului dintre tablere).
 Protectia anticoroziva a gratarului metalic se va face prin galvanizare profunda executata la cald

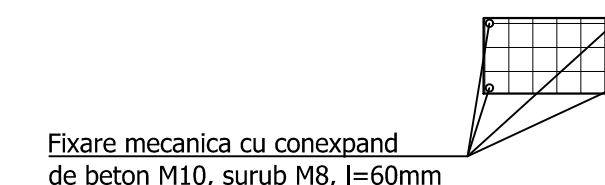
SECTIUNE TRANSVERSALA GRATAR PROTECTIE

Sc. 1:100



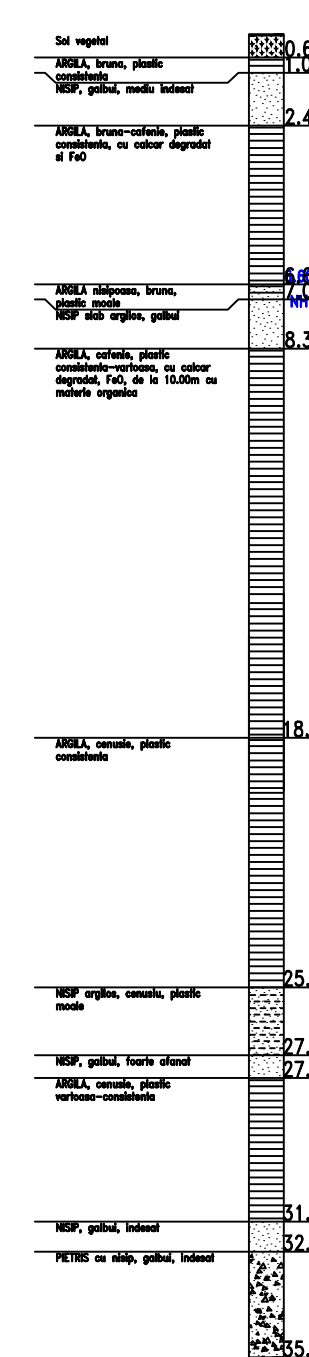
DETALIU FIXARE GRATARE DE PROTECTIE

Sc. 1:100

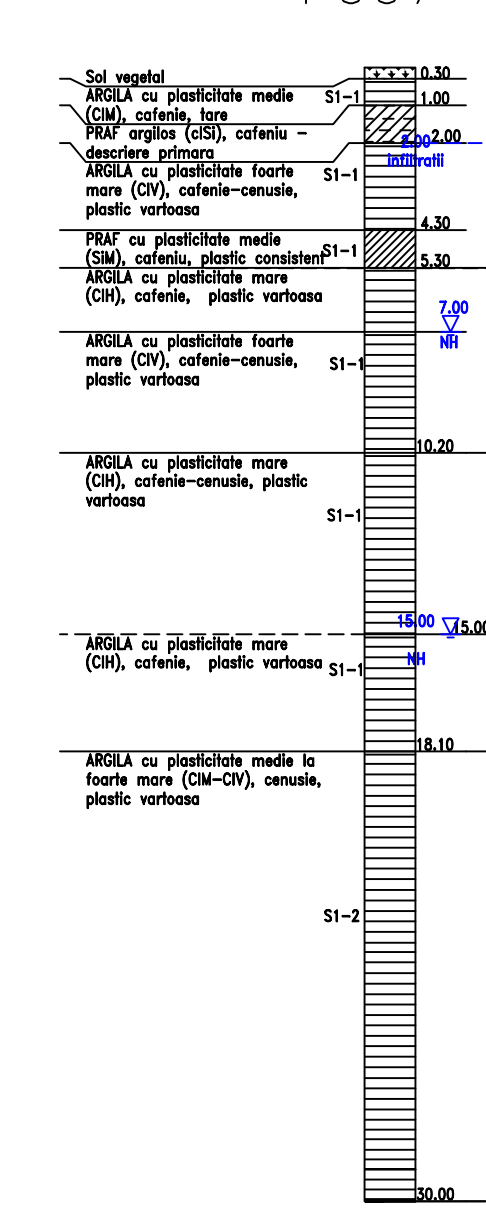


FORAJE GEOTEHNICE

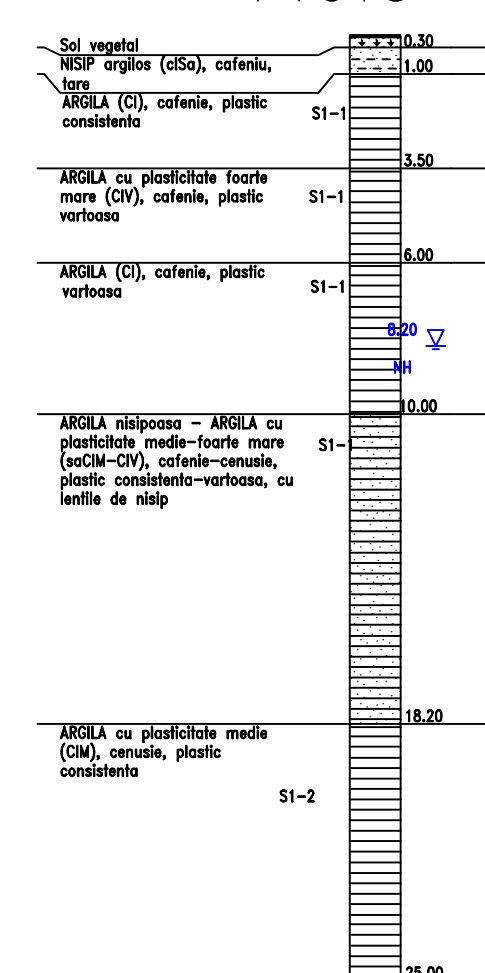
F3001



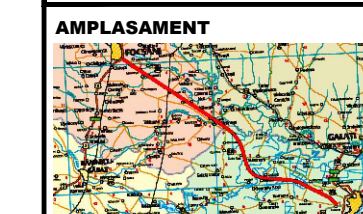
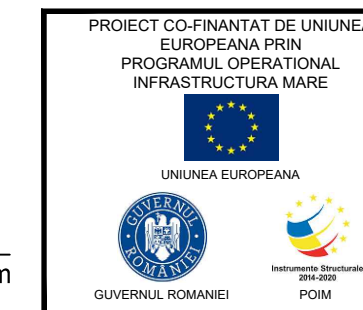
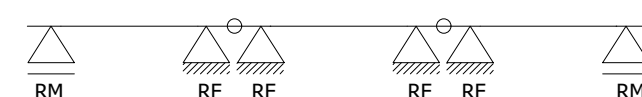
F007



F1013



SCHEMA STATICA - GRINZI SIMPLU REZEMATE CONTINUIZATE LA NIVELUL PLACII



BENEFICIAR
 MINISTERUL TRANSPORTURILOR SI INFRASTRUCTURII
 COMPANIA NATIONALA DE ADMINISTRARE A INFRASTRUCTURII RUTIERE



PROIECTANT GENERAL
acciona

SUBPROIECTANT

INVESTITIA
 ELABORARE STUDII DE FEZABILITATE SI PROIECT TEHNIC DE EXECUTIE PENTRU OBIECTIVUL DRUM EXPRES FOCSANI - BRAILA

FAZA DE PROIECTARE
 Studiu de Fezabilitate

Coordonator de proiect: Ing. José Carlos RUBIO MATILLA
 Proiectat: Ing. VELEA Cornel
 Verificat: Ing. Drăgăș - Florin VOJTESCU

Proiect nr: 92/37074/19.06.2020

Scara: 1:500 / 1:200

Data: IANUARIE 2024

Pod pe DX peste canal si DL km 3+772
DISPOZITIE GENERALA

Cod: FB-SF-L1-STR-ST02-DG-001 Rev. 03