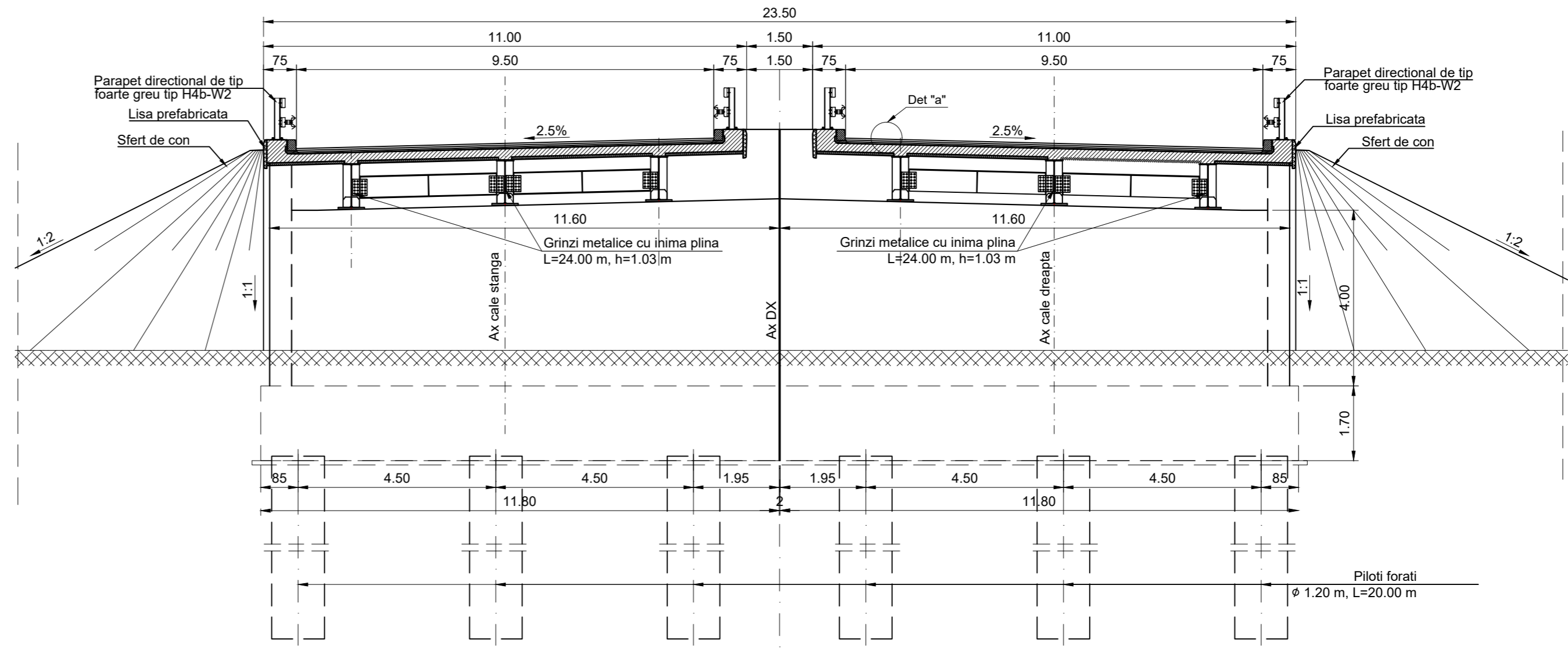


SECTIUNE TRANSVERSALA A-A

Sc. 1:100



MATERIALE

1. Beton cf. CP 012/2007

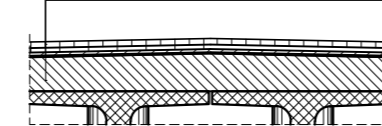
Element constructiv	Beton	Clasa de expunere	Tasare	A/C	Ciment	Armatura
Beton egalizare	C8/10	XF1	-	-	-	-
Pereu	C25/30	XC4;XF2	S4	0.500	300	-
Piloti	C20/25	XC2	S4	0.60	375	B500SC/BS T500SC
Radier	C30/37	XC4;XF2;XD1	S3	0.55	300	B500SC/BS T500SC
Elevatii	C30/37	XC4;XF2;XD1	S3	0.55	300	B500SC/BS T500SC
	C35/45	XC4;XF2;XD3	S3	0.50	320	B500SC/BS T500SC
Placi racordare / Grinda rezemare	C20/25	XC2	S4	0.60	260	B500SC/BS T500SC
Grinda prefabricata post-tensionata	C45/55	XC4;XD1;XF2	S4	0.40	320	B500SC/BS T500SC
Grinda prefabricata pretensionata	C50/60	XC4;XD1;XF2	S4	0.40	320	B500SC/BS T500SC
Placa suprabetonare / Borduri	C35/45	XC4;XF4;XD3	S3	0.50	340	B500SC/BS T500SC
Predale prefabricate	C35/45	XC4;XD1;XF4	S4	0.50	340	B500SC/BS T500SC
Prefabricat grinda parapet	C35/45	XC4;XD3;XF4	S4	0.45	340	B500SC/BS T500SC

2. Otel

Armatura moale	B500SC/BS T500SC
Armatura pretensionata	TBP Y 1860S7
Otel tablari metalic	S355NL / S355J2+N, echivalent OL52EP

DETALIU "a"

- Mixtura asfaltica stabilizata MAS16 - 4 cm
- Beton asfaltic pentru poduri BAP16 - 4 cm
- Protectie hidroizolatie BA8 - 3 cm
- Hidroizolatie
- Placa de suprabetonare C35/45



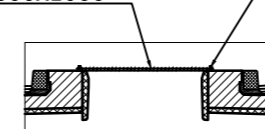
NOTA:
Intre structurile juxtapuse se vor monta plase de protectie orizontale, conform detaliului alaturat, pe toata lungimea suprastructurii (golului dintre tablere).
Protectia anticoroziva a gratarului metalic se va face prin galvanizare profunda executata la cald

SECTIUNE TRANSVERSALA GRATAR PROTECTIE

Sc. 1:100

Gratar metalic zincat 1800x1000

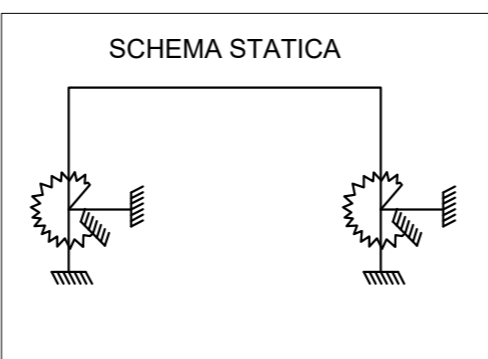
Fixare mecanica cu conexpand de beton M10, surub M8, l=60mm



DETALIU FIXARE GRATARE DE PROTECTIE

Sc. 1:100

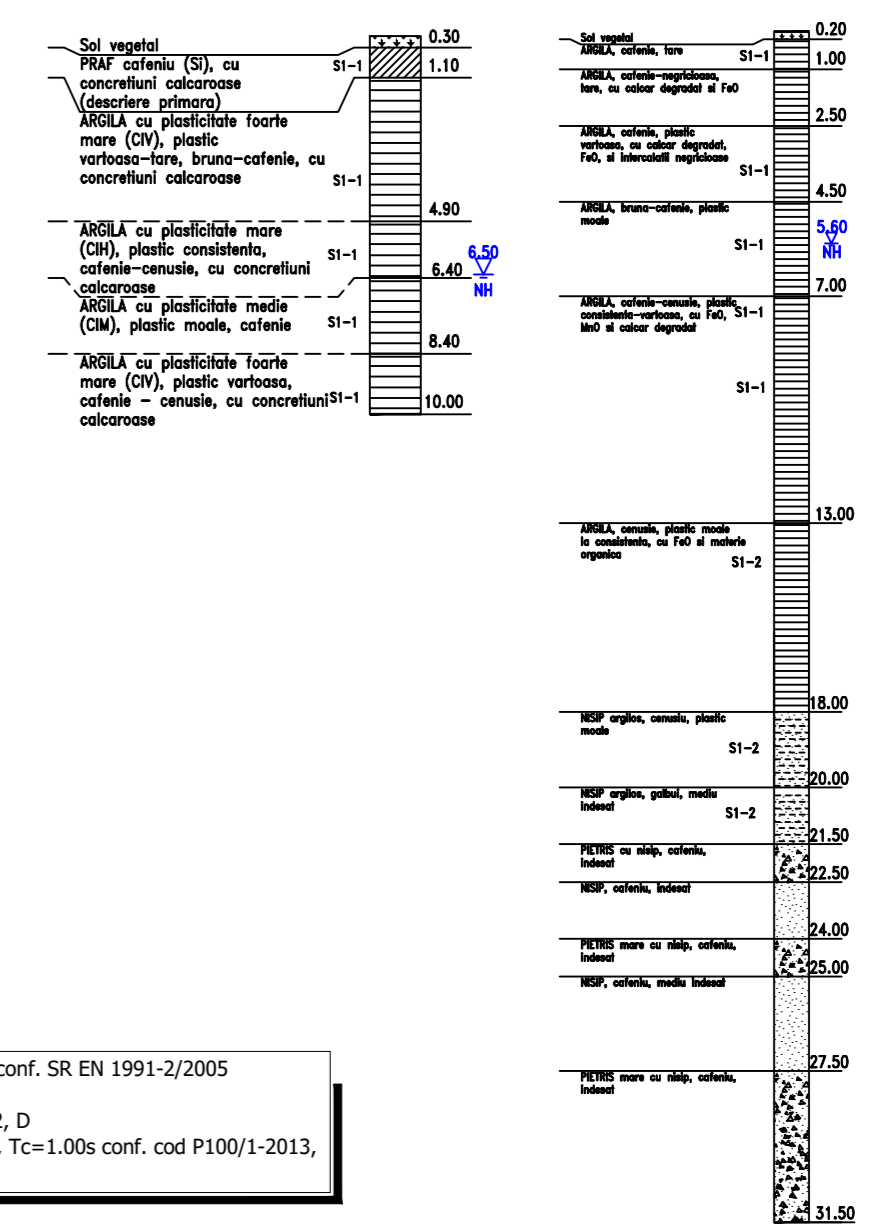
Fixare mecanica cu conexpand de beton M10, surub M8, l=60mm



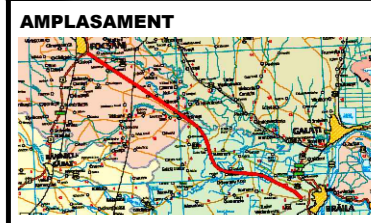
FORAJE GEOTEHNICE

F040

F2004



Convoi de calcul: LM1, LM2, conf. SR EN 1991-2/2005
Categorie de importanta: "B"
Exigente de verificare: A4, B2, D
Parametri seismici: $a_g=0.35g$, $T_c=1.00s$ conf. cod P100/1-2013, SR EN 1998-2/2006



BENEFICIAR

MINISTERUL TRANSPORTURILOR SI INFRASTRUCTURII

COMPANIA NATIONALA DE ADMINISTRARE A INFRASTRUCTURII RUTIERE

CNAIR

PROIECTANT GENERAL

acciona

SUBPROIECTANT

INVESTITIA

ELABORARE STUDIU DE FEZABILITATE SI PROIECT TEHNIC DE EXECUTIE PENTRU OBIECTIVUL DRUM EXPRES FOCSANI - BRAILA

FAZA DE PROIECTARE

Studiu de Fezabilitate

Coordonator de proiect: ing. José Carlos RUBIO MATILLA

Proiectat: ing. VELEA Cornel

Verificat: ing. Dragos - Florin VULPESCU

Proiect nr: 92/37074/19.06.2020

Scara: 1:200 / 1:100

Data: IANUARIE 2024

Pasaj pe DX pentru permeabilitate fauna km 11+574

DISPOZITIE GENERALA - Solutia 2