

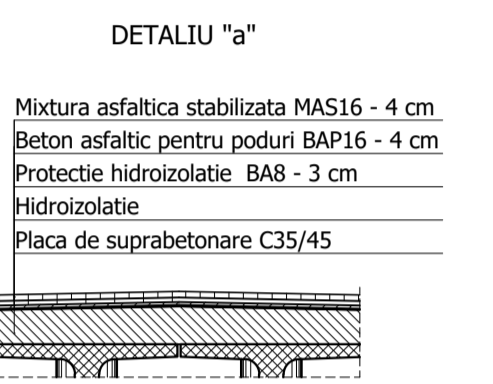
MATERIALE

1. Beton cf. CP 012/2007

Element constructiv	Beton	Clasa de expunere	Tasare	A/C	Ciment	Armatura
Beton egalizare	C8/10	XF1	-	-	-	-
Pereu	C25/30	XC4, XF2	S4	0.500	300	-
Pilati	C20/25	XC2	S4	0.60	375	B500S/CB5T500SC
Radier	C30/37	XC4, XF2, XD1	S3	0.55	300	B500S/CB5T500SC
Elevatii	C30/37	XC4, XF2, XD1	S3	0.55	300	B500S/CB5T500SC
Placi racordare / Grinda rezemara	C20/25	XC2	S4	0.60	260	B500S/CB5T500SC
Grinda prefabricata post-tensionata	C45/55	XC4, XD1, XF2	S4	0.40	320	B500S/CB5T500SC
Grinda prefabricata pretensionata	C50/60	XC4, XD1, XF2	S4	0.40	320	B500S/CB5T500SC
Placa suprabetonare / Borduri	C35/45	XC4, XF4, XD3	S3	0.50	340	B500S/CB5T500SC
Predala prefabricata	C35/45	XC4, XD1, XF4	S4	0.50	340	B500S/CB5T500SC
Prefabricat grinda parapet	C35/45	XC4, XD3, XF4	S4	0.45	340	B500S/CB5T500SC

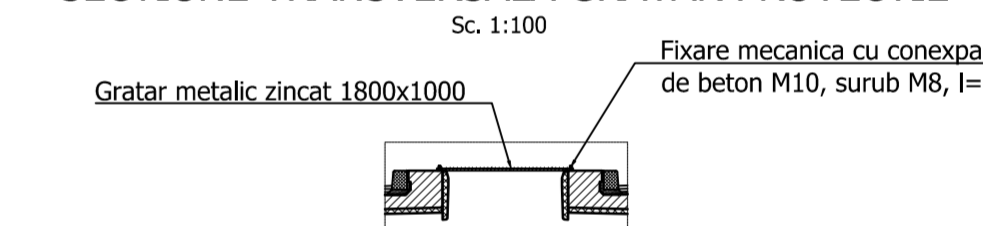
2. Otel

Armatura moale	B500S/CB5T500SC
Armatura pretensionata	TBP Y 1860S7
Otel tablari metalici	S355NL / S355J2+N echivalent OL52EP

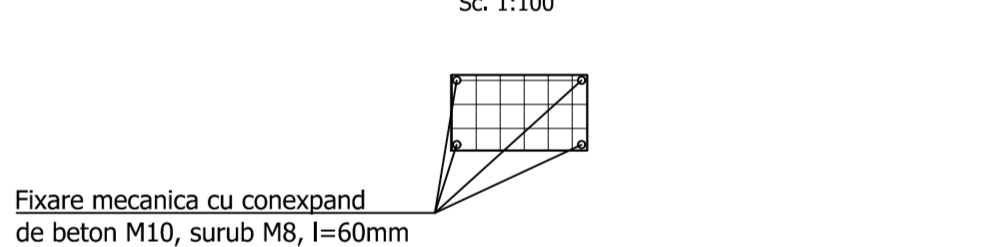


NOTA:
Intre structurile juxtapuse se vor monta plase de protectie orizontale, conform detaliului alaturat, pe toata lungimea suprastructurii (golului dintre tablari).
Protectia anticoroziva a gratarului metalic se va face prin galvanizare profunda executata la cald

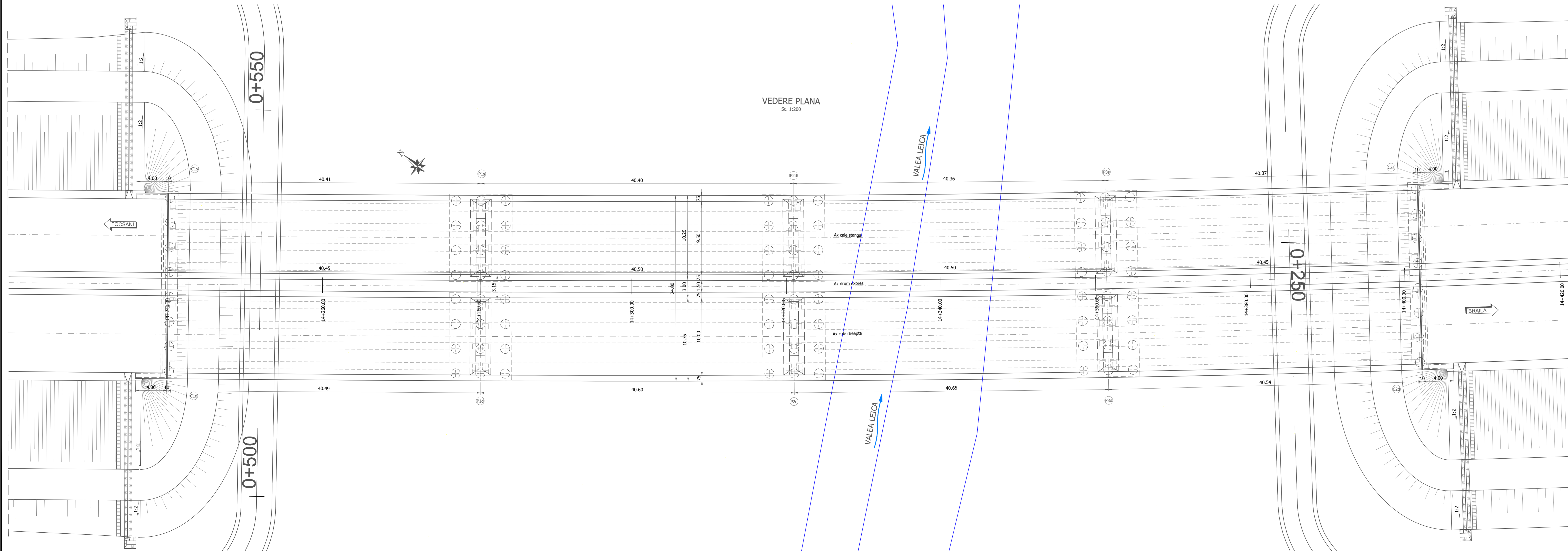
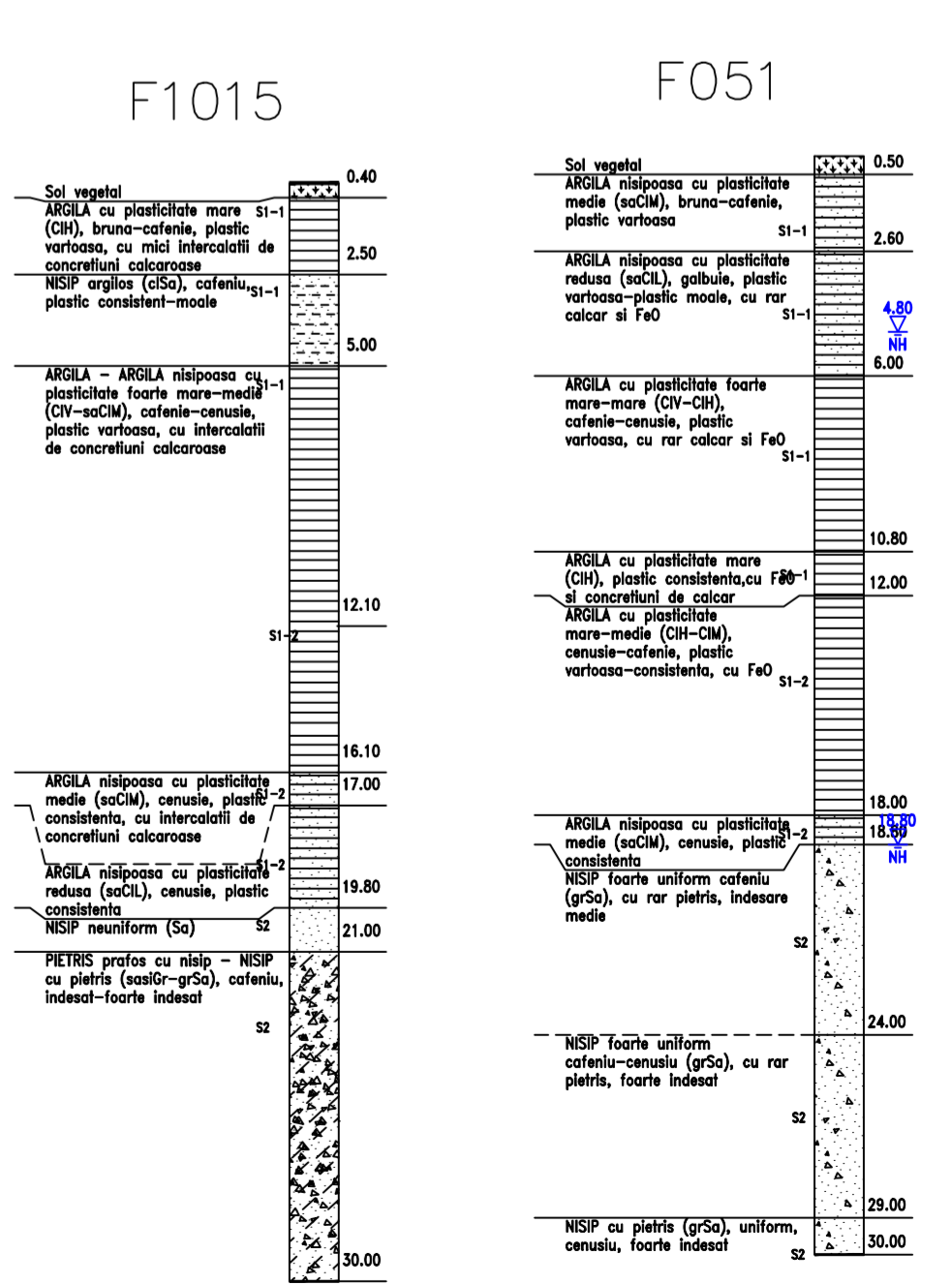
SECTIUNE TRANSVERSALA GRATAR PROTECTIE



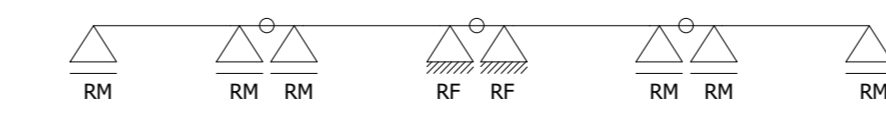
DETALIU FIXARE GRATARE DE PROTECTIE



FORAJE GEOTEHNICE



SCHEMA STATICA - GRINZI SIMPLU REZEMATE CONTINUJZATE LA NIVELUL PLACII



Convoi de calcul: LM1, LM2, conf. SR EN 1991-2/2005
Categorie de importanta: "B"
Evidenta de verificare: A4, B2, D
Parametrii seismici: $\alpha_H=0.35g$, $T_c=1.00s$ conf. cod P100/1-2013, SR EN 1998-2/2006

PROIECT COORDINAT DE LINIEA EUROPEANA DE INFRASTRUCTURA NAZIONALE

PROIECT OPERATIONAL INFRASTRUCTURA NAZIONALE

GUVERNUL ROMANIEI

AMPLASAMENT

BENEFICIAR
MINISTERUL TRANSPORTURILOR SI INFRASTRUCTURII NAZIONALE
COMPANIA NATIONALA DE ADMINISTRARE A INFRASTRUCTURII RUTIERE

PROIECTANT GENERAL
acciona

SUBPROIECTANT

INVESTITIA
ELABORARE STUDIUL SI PROIECT TEHNIC DE EXECUTIE PENTRU OBIECTIVUL DRUM EXPRES FOCSANI - BRAILA

FAZA DE PROIECTARE
Studiu de Fezabilitate

Coordonator de proiect
Ing. Jose Carlos RUBIO MARTIN

Proiectant
Ing. Valentin BUCUR

Verificat
Ing. Dragos MIRON

Proiect nr.
93/3707/19.06.2020

Scara:
1:200

Data:
IANUARIE 2024

Pod pe DA, peste valea Leica si DL km 14+236
DISPOZITIE GENERALA

Rev. 03