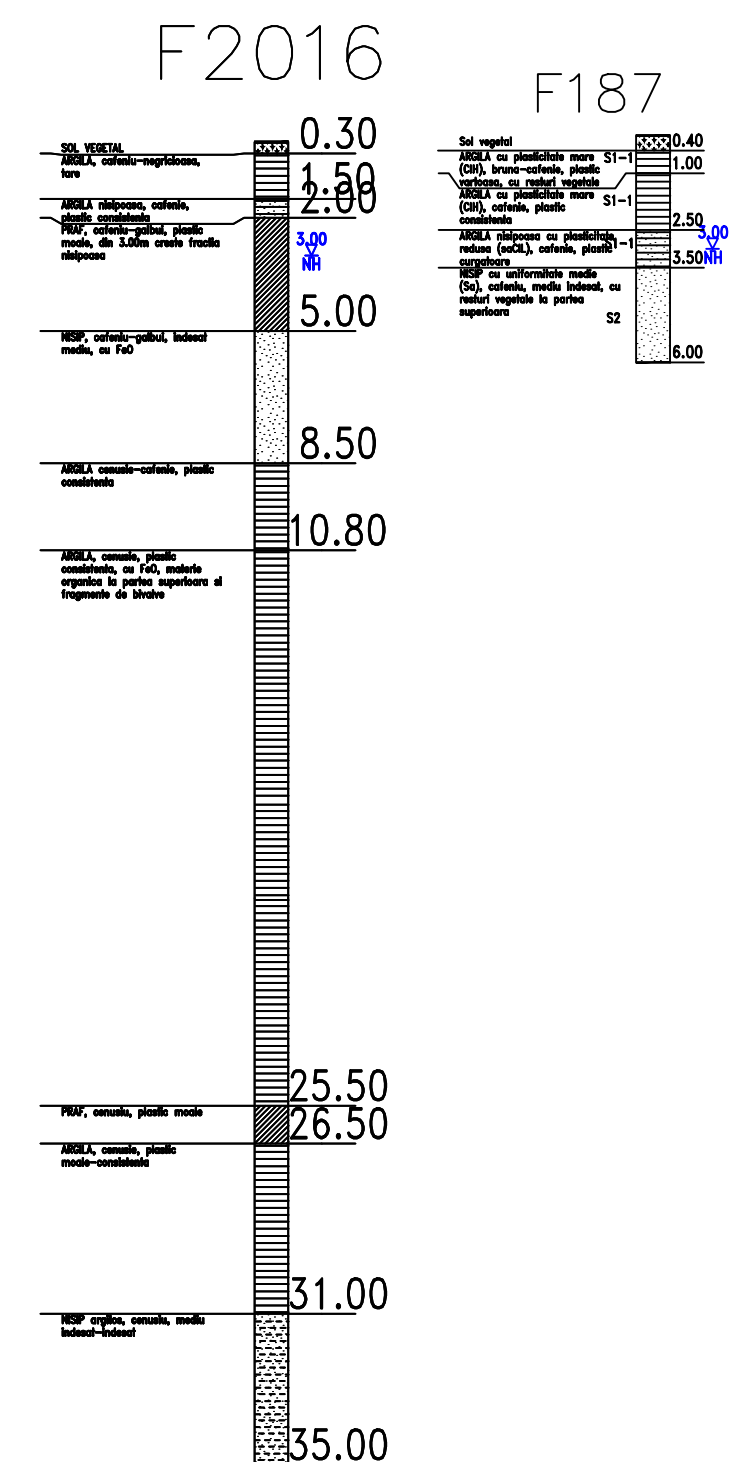
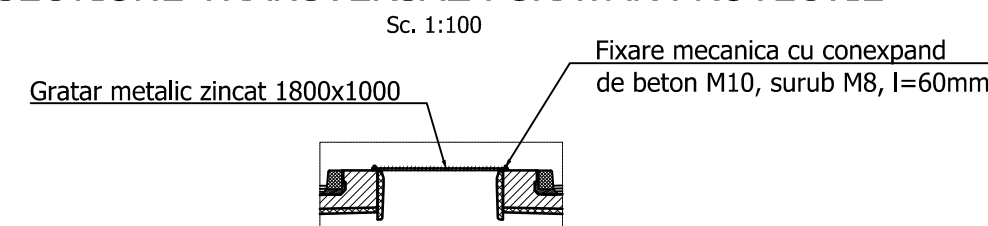


FORAJE GEOTEHNICE



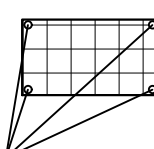
NOTA:
Intre structurile juxtapuse se vor monta plase de protectie orizontale, conform detaliului alaturat, pe toata lungimea suprastructurii (golului dintre tablere).
Protectia anticoroziva a gratarului metalic se va face prin galvanizare profunda executata la cald

SECTIUNE TRANSVERSALA GRATAR PROTECTIE



DETALIU FIXARE GRATARE DE PROTECTIE

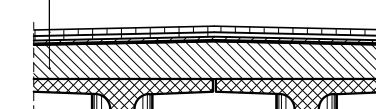
Sc. 1:100



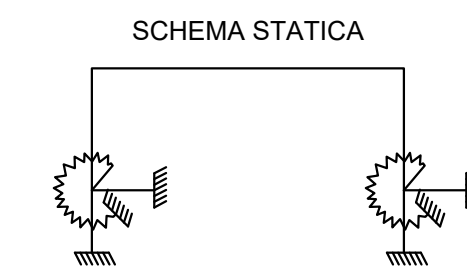
Fixare mecanica cu conexpand de beton M10, surub M8, l=60mm

DETALIU "a"

Mixtura asfaltica stabilizata MAS16 - 4 cm
Beton asfaltic pentru poduri BAP16 - 4 cm
Protectie hidroizolatie BA8 - 3 cm
Hidroizolatie
Placa de suprabetonare C35/45



Convoi de calcul: LM1, LM2, conf. SR EN 1991-2/2005
Categorie de importanta: "B"
Exigente de verificare: A4, B2, D
Parametri seismici: a_y=0.35g, T_c=1.00s conf. cod P100/1-2013, SR EN 1998-2/2006



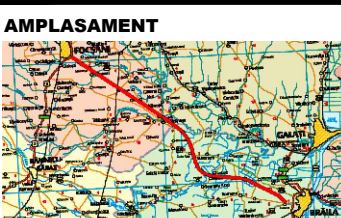
MATERIALE

1. Beton cf. CP 012/2007

Element constructiv	Beton	Clasa de expunere	Tasare	A/C	Ciment	Armatura
Beton egalizare	C8/10	XF1	-	-	-	-
Pereu	C25/30	XC4;XF2	S4	0.50	300	-
Piloti	C20/25	XC2	S4	0.60	375	B500SC/BS T500SC
Radier	C30/37	XC4;XF2;XD1	S3	0.55	300	B500SC/BS T500SC
Elevatii	C30/37	XC4;XF2;XD1	S3	0.55	300	B500SC/BS T500SC
Placi racordare / Grinda rezemare	C35/45	XC4;XF2;XD3	S3	0.50	320	B500SC/BS T500SC
Grinda prefabricata post-tensionata	C20/25	XC2	S4	0.60	260	B500SC/BS T500SC
Grinda prefabricata pretensionata	C45/55	XC4;XD1;XF2	S4	0.40	320	B500SC/BS T500SC
Placa suprabetonare / Borduri	C50/60	XC4;XD1;XF2	S4	0.40	320	B500SC/BS T500SC
Predale prefabricate	C35/45	XC4;XF4;XD3	S3	0.50	340	B500SC/BS T500SC
Prefabricat grinda parapet	C35/45	XC4;XD1;XF4	S4	0.50	340	B500SC/BS T500SC
Prefabricat grinda parapet	C35/45	XC4;XD3;XF4	S4	0.45	340	B500SC/BS T500SC

2. Otel

Armatura moale	B500SC/BS T500SC
Armatura pretensionata	TBP Y1860S7
Otel tablari metalic	S355NL / S355J2+N, echivalent OL52EP



BENEFICIAR
MINISTERUL TRANSPORTURILOR SI INFRASTRUCTURII
COMPANIA NATIONALA DE ADMINISTRARE A INFRASTRUCTURII RUTIERE



PROIECTANT GENERAL
acciona

SUBPROIECTANT

INVESTITIA
ELABORARE STUDIU DE FEZABILITATE SI PROIECT TEHNIC DE EXECUTIE PENTRU OBIECTIVUL DRUM EXPRES FOCSANI - BRAILA

FAZA DE PROIECTARE
Studiu de Fezabilitate

Coordonator de proiect
ing. José Carlos RUBIO MATILLA
Proiectat
ing. VELEA Cornel
Verificat
ing. Dragos - Florin VULPESCU

Proiect nr:
92/37074/19.06.2020

Scara: 1:200 / 1:100

Data: IANUARIU 2024

Pasaj pe DX pentru permeabilitate fauna km 46+749
DISPOZITIE GENERALA - Solutia 2