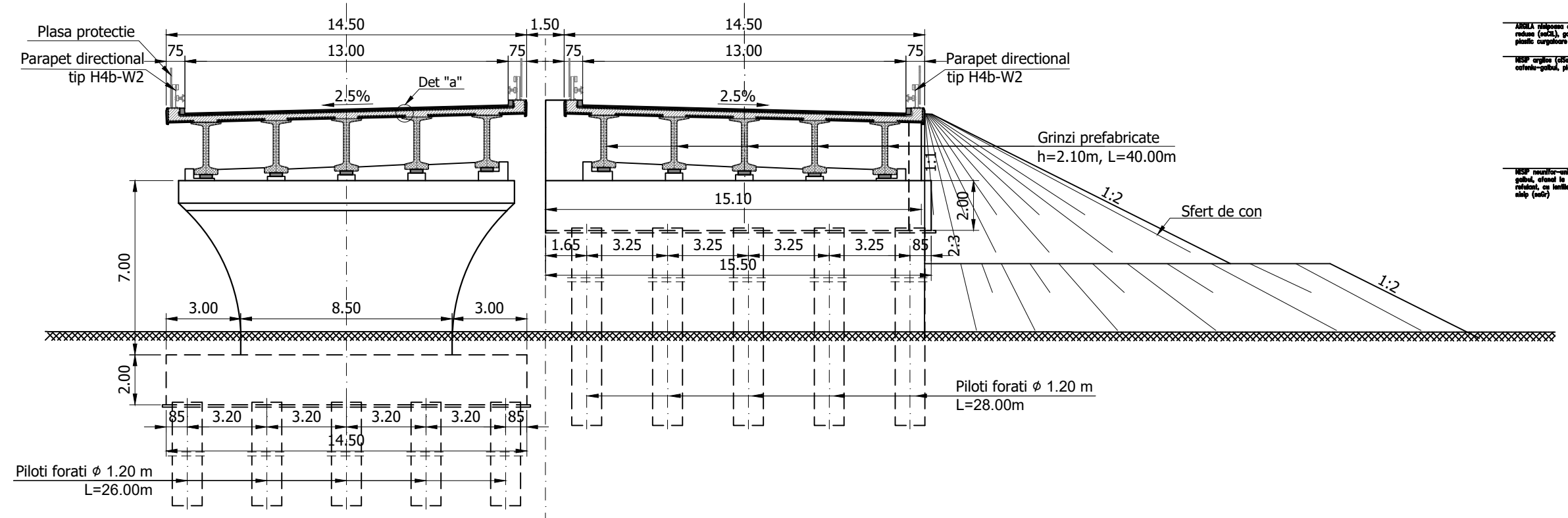


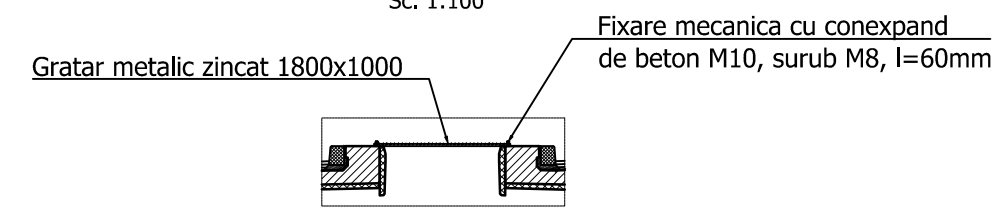
**SECTIUNE TRANSVERSALA A-A** Sc. 1:200

**SECTIUNE TRANSVERSALA B-B** Sc. 1:200

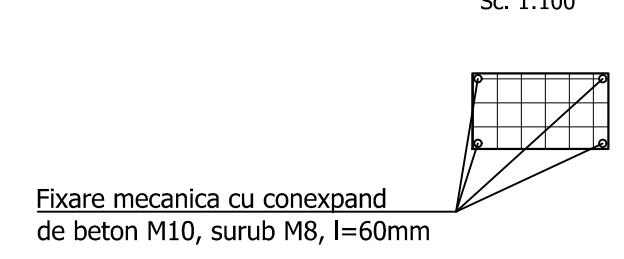


**NOTA:**  
Intre structurile juxtapuse se vor monta plase de protectie orizontale, conform detaliului alaturat, pe toata lungimea suprastructurii (golului dintre tabliere)  
Protectia anticoroziva a gratarului metalic se va face prin galvanizare profunda executata la cald

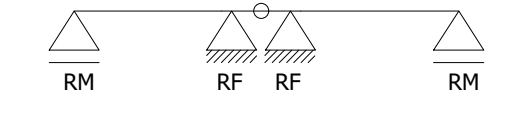
**SECTIUNE TRANSVERSALA GRATAR PROTECTIE**  
Sc. 1:100



**DETALIU FIXARE GRATARE DE PROTECTIE**  
Sc. 1:100



**SCHEMA STATICA - GRINZI SIMPLU REZEMATE CONTINUIZATE LA NIVELUL PLACII**



**MATERIALE**

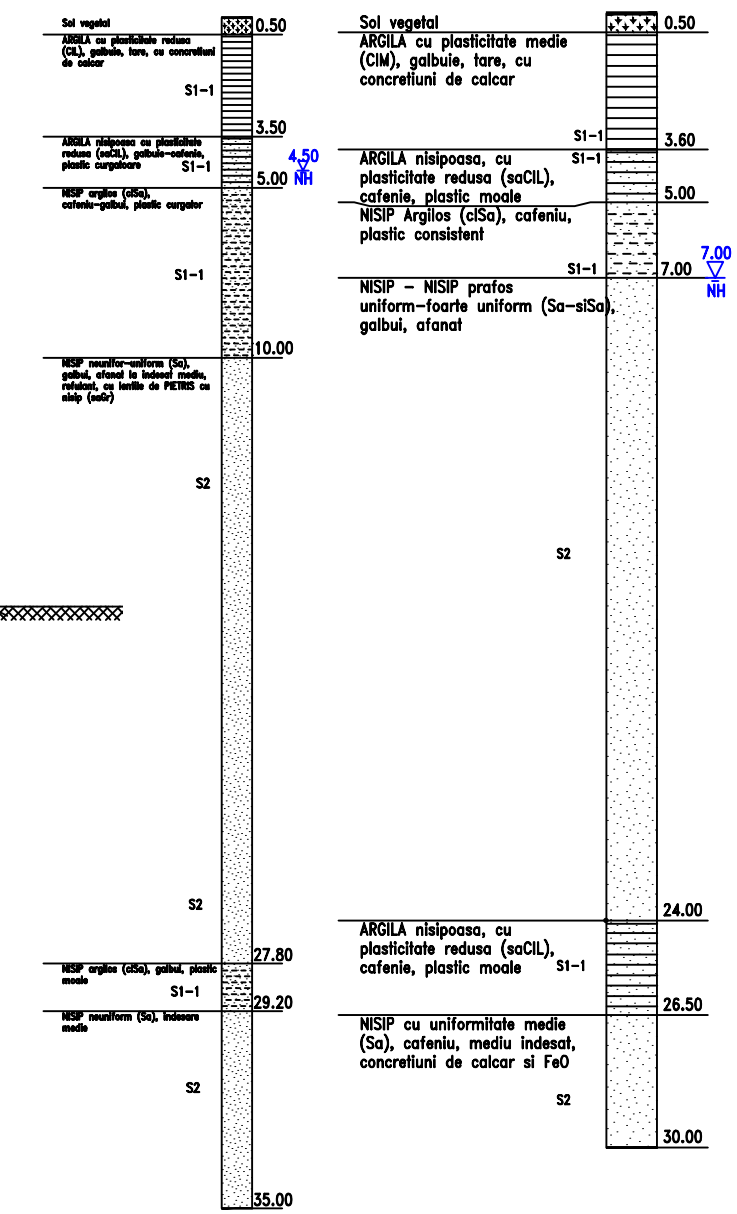
**1. Beton cf. CP 012/2007**

Element constructiv	Beton	Clasa de expunere	Tasare	A/C	Ciment	Armatura
Beton egalizare	C8/10	XF1	-	-	-	-
Pereu	C25/30	XC4;XF2	S4	0.500	300	-
Piloti	C20/25	XC2	S4	0.60	375	B500SC/BST500SC
Radier	C30/37	XC4;XF2;XD1	S3	0.55	300	B500SC/BST500SC
Elevatii	C30/37	XC4;XF2;XD1	S3	0.55	300	B500SC/BST500SC
	C35/45	XC4;XF2;XD3	S3	0.50	320	B500SC/BST500SC
Placi racordare / Grinda rezemare	C20/25	XC2	S4	0.60	260	B500SC/BST500SC
Grinda prefabricata post-tensionata	C45/55	XC4;XD1;XF2	S4	0.40	320	B500SC/BST500SC
Grinda prefabricata pretensionata	C50/60	XC4;XD1;XF2	S4	0.40	320	B500SC/BST500SC
Placa suprabetonare / Borduri	C35/45	XC4;XF4;XD3	S3	0.50	340	B500SC/BST500SC
Predale prefabricate	C35/45	XC4;XD1;XF4	S4	0.50	340	B500SC/BST500SC
Prefabricat grinda parapet	C35/45	XC4;XD3;XF4	S4	0.45	340	B500SC/BST500SC

**2. Otel**

Armatura moale	B500SC/BST500SC
Armatura pretensionata	TBP Y1860S7
Otel tablier metalic	S355NL / S355J2+N, echivalent OL52EP

**F3012** **F275**



Convoi de calcul: LM1, LM2, conf. SR EN 1991-2/2005  
Categorii de importanta: "B"  
Exigente de verificare: A4, B2, D  
Parametri seismici: a<sub>g</sub>=0.30g, T<sub>c</sub>=1.00s conf. cod P100/1-2013, SR EN 1998-2/2006

PROIECT CO-FINANAT DE UNIUNEA EUROPEANA PRIN PROGRAMUL OPERATIONAL INFRASTRUCTURA MARE

UNIUNEA EUROPEANA

GUVERNUL ROMANIEI

AMPLASAMENT

BENEFICIAR

MINISTERUL TRANSPORTURILOR SI INFRASTRUCTURII

COMPANIA NATIONALA DE ADMINISTRARE A INFRASTRUCTURII RUTIERE

PROIECTANT GENERAL

acciona

SUBPROIECTANT

INVESTITIA

ELABORARE STUDIULUI DE FEZABILITATE SI PROIECT TEHNIC DE EXECUTIE PENTRU OBIECTIVUL DRUM EXPRES FOCSANI - BRAILA

FAZA DE PROIECTARE

Studiu de Fezabilitate

Coordonator de proiect: ing. José Carlos RUBIO MATILLA

Proiectat: ing. VELEA Cornel

Verificat: ing. Dragos Florin VULPESCU

Proiect nr: 92/37074/19.06.2020

Scara: 1:200 / 1:100

Data: IANUARIE 2024

Pasaj pe DX peste DJ221C km 68+230 DISPOZITIE GENERALA

Cod: FB-SF-L3-STR-ST54-DG-001 Rev. 03