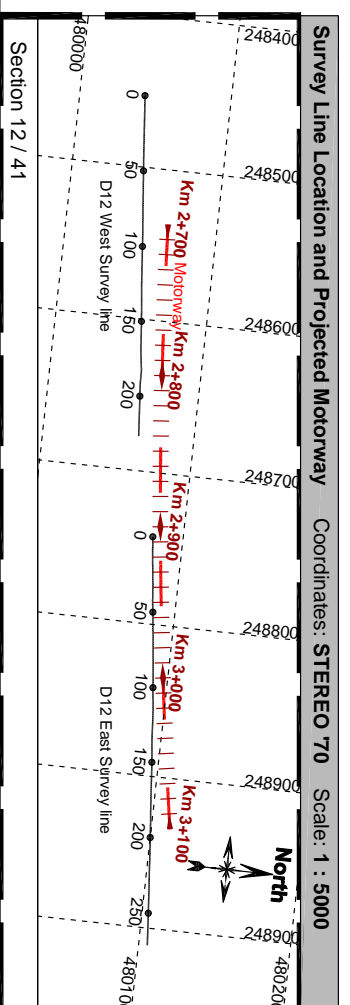
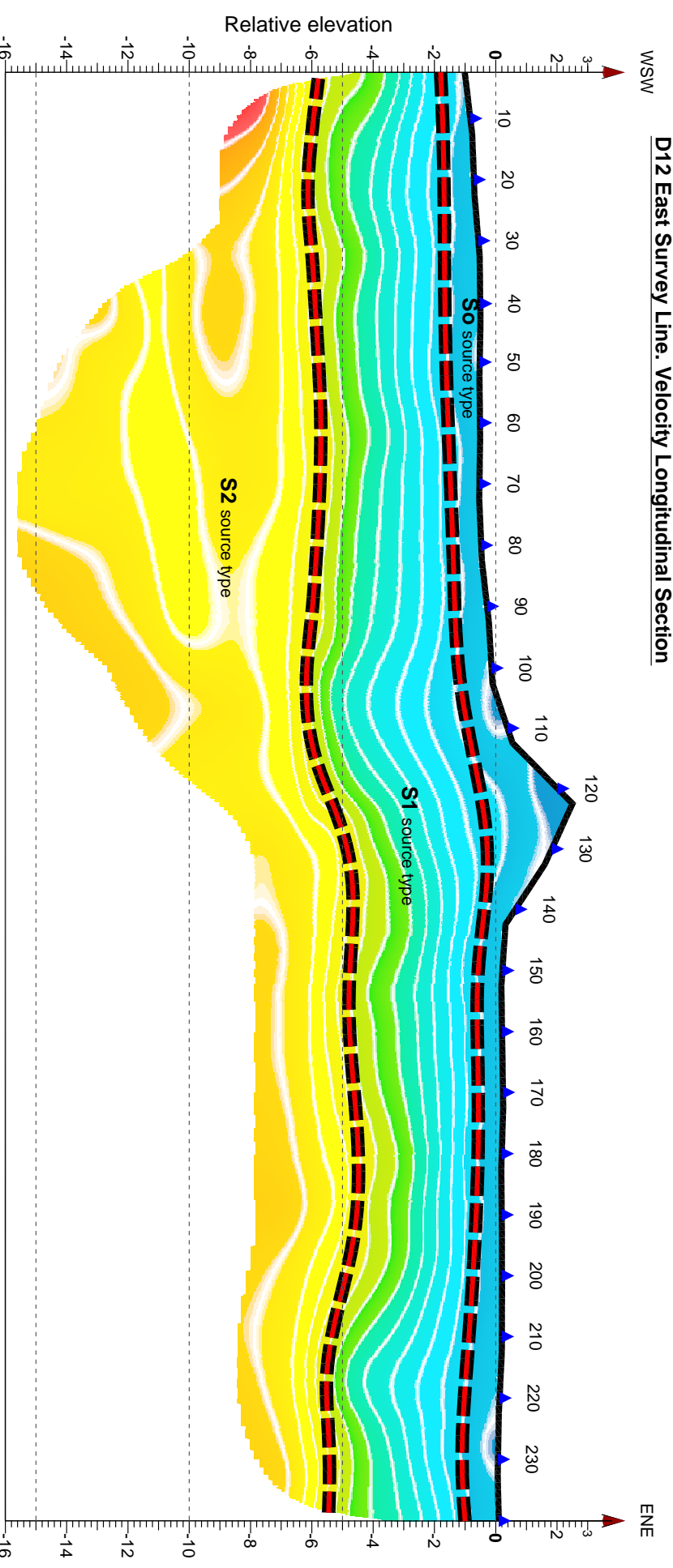


- Legend:**
- Ground level and Geophone locators (every fifth geophone)
 - High confidence lithological boundaries

Interpreted sources expected nature:
S0 - low velocity source (loose sediments)
S1 - low velocity source (unconsolidated and/or moist sediments)
S2 - medium velocity source



Contractor: S.C. BELEVION IMPEX S.R.L.		Technical Assistance for the Preparation of Road Project Pipeline for the Caleșon Fund Contract No. 1 Package D	Sheet No. 12 / 41
Survey Line Location Reference System: STEREO 70 (Scale 1 : 5000) Vertical Scale: 1 : 200 Seismic Refraction Method			
Surveys by: Eng. Șerban NEGREA Prepared by: Eng. Șerban NEGREA Checked by: Eng. Horia NISTOR Approved by: Eng. Calin VISARION	Scale: 1 : 1000 SEISMIC SURVEY - D12 VOLUME KM 2+700 - 3+100	Project Owner: The Joint Venture DWI Consult International GmbH, Rougihan & O'Donovan Consulting Engineers, IC Consulaten Ziviltechniker Ges.m.b.H.	
Project Name: The Joint Venture DWI Consult International GmbH, Rougihan & O'Donovan Consulting Engineers, IC Consulaten Ziviltechniker Ges.m.b.H.		Survey Line Position Velocity Longitudinal Sections	