

**Legend:**

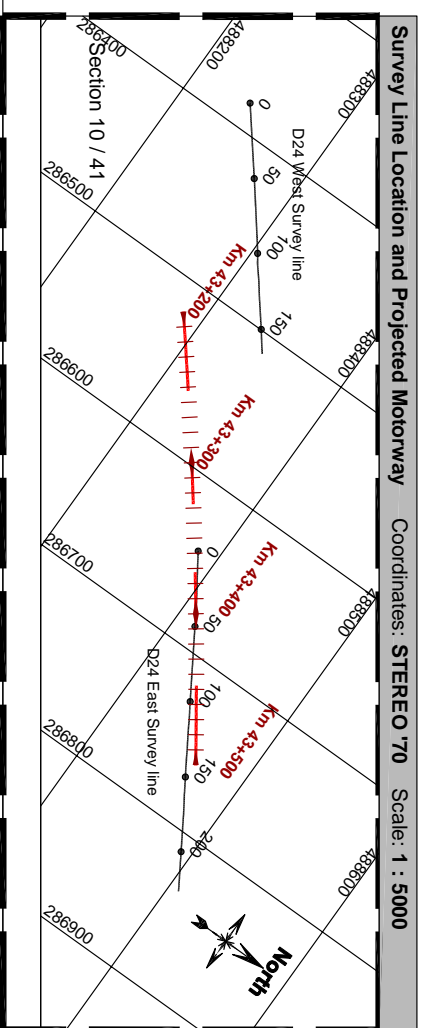
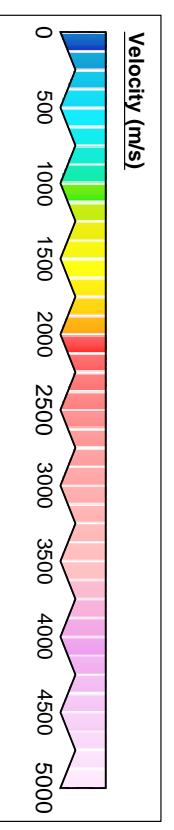
- Ground level and geophone locations (every 10th geophone)
- 10 20

**Interpretation:**

- High confidence lithological boundaries
- Low confidence lithological boundaries

**Interpreted sources, expected nature:**

- S0 - very/low velocity source (loose sediments)
- S1 - low velocity source (unconsolidated and/or moist sediments)
- S2 - medium velocity source
- S3 - high velocity source



<p><b>Contractor:</b> S.C. BELEVION IMPREG S.R.L.</p>		<p>Technical Assistance for the Preparation of Road Project Pipeline for the Cahesian Fund Contract No. 1 Package D</p>	
<p><b>Surveyed by:</b> Eng. Serhan NEGREA</p>		<p>Scale: 1 : 1000</p>	
<p><b>Prepared by:</b> Eng. Serhan NEGREA</p>		<p><b>LUGOU - DEVA MOTORWAY, TASK (III)</b></p>	
<p><b>Checked by:</b> Eng. Horia NISTOR</p>		<p><b>SEISMIC SURVEY - D24 VOLUME</b></p>	
<p><b>Approved by:</b> Eng. Calin VISARION</p>		<p>KM 43+200 - 43+500</p>	
<p><b>Project Owner:</b> The Joint Venture DWM Consult International GmbH, Rougihan &amp; O'Donovan Consulting Engineers, IC Consulmen Zivltechniker Ges.m.b.H</p>		<p>Survey Line Position Velocity Longitudinal Sections</p>	
<p><b>Observations:</b> Survey Line Location Reference System: Romania STEREO 70 (Scale 1 : 5000) Vertical Scale: 1 : 200 Seismic Refraction Method</p>		<p>Sep-Dec 2008</p>	
<p>Sheet No. 24 / 41</p>		<p>Package D</p>	