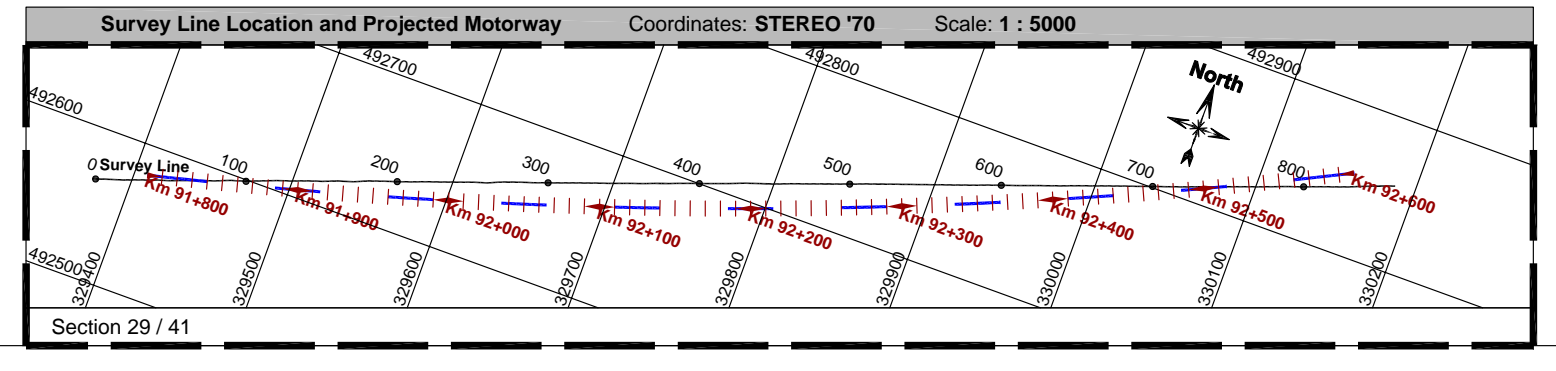


Legend:

- Ground level and Electrode locations
- High confidence lithological boundaries
- Low confidence lithological boundaries

Interpretation:

- Sch-1 - sand
- Sch-2 - clay



Observations:	Contractor: S.C. BELEVION IMPEX S.R.L.	Technical Assistance for the Preparation of Road Project: Pipeline for the Colson Ford Contract No. 1 Package D	Sheet No.: 23/41
Survey Line Location Reference System: Roma1986 STEREO 70 (Scale 1:5000)	Submitted by: Eng. Filip ONESCU	Scale: 1:1000	RESISTIVITY SURVEY - D29 VOLUME
Vertical Scale: 1:1000	Checked by: Eng. Horia NESTOR	Project Owner: The Joint Venture	Survey Line Position: Resistivity and Chargeability Longitudinal Sections
Field Office Area: Coordinates and Chargeability Measurements	Approved by: Eng. Catalin VISAN	Project Manager: DWI Consult International GmbH, Roughan & O'Donovan Consulting Engineers, IC Consultenți, Dabulocher Ge.m.b.H	Sheet Date: Sep-Dec 2008