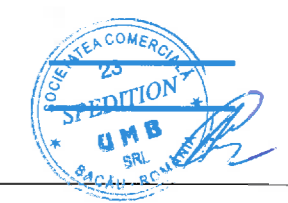


ID	Task Mod	Task Name	Duration	Start	Finish	Predecessor	Resource	Cost	2021											
									Qtr 4, 2020	Qtr 1, 2021	Qtr 2, 2021	Qtr 3, 2021	Qtr 4, 2021	Sep	Oct	Nov	Dec	Jan	Feb	Mar
1		<b>Proiectare si Executie ,, Autostrada Brasov-Targu Mures-Cluj-Oradea, Subsectiunea 3A2: Nadaselu - Mihaiesti(km 8+700-km25+500) si Subsectiunea 3B1: Mihaiesti - Zimbor (km</b>	1095 days	Mon 1/25/21	Wed 1/24/24			1,326,485,612.84 lei	[Gantt bar from Jan 2021 to Dec 2021]											
2		<b>ORDIN INCEPERE</b>	1 day	Mon 1/25/21	Mon 1/25/21			0.00 lei	[Gantt bar at start of Jan 2021]											
3		<b>ETAPA DE PROIECTARE A CONTRACTULUI [INCLUSIV ASISTENTA TEHNICA]</b>	364 days	Tue 1/26/21	Mon 1/24/22			19,625,400.00 lei	[Gantt bar from Jan 2021 to Feb 2022]											
4		Proiectarea	364 day	Tue 1/26/21	Mon 1/24/22	2SS	Inginer	19,625,400.00 lei	[Gantt bar from Jan 2021 to Feb 2022]											
5		<b>Punct de referinta nr. 1</b>	56 days	Tue 1/26/21	Mon 3/22/21			0.00 lei	[Milestone diamond at 3/22]											
6		Tot personalului cheie a Proiectantului este mobilizat	56 days	Tue 1/26/21	Mon 3/22/21			0.00 lei	[Gantt bar from Jan 2021 to Mar 2021]											
7		Identificarea siturilor arheologice si a zonelor cu potential arheologic este finalizata.Este stabilit programul cercetarilor arheologice preventive in vederea descarcarii de sarcina arheologica pentru zonele delimitate ca situri arheologice	56 days	Tue 1/26/21	Mon 3/22/21			0.00 lei	[Gantt bar from Jan 2021 to Mar 2021]											
8		Identificarea retelelor de utilitati	56 days	Tue 1/26/21	Mon 3/22/21			0.00 lei	[Gantt bar from Jan 2021 to Mar 2021]											
9		Documentatia pentru obtinerea avizelor/acordurilor/autorizatii sunt elaborate si transmise in vederea obtinerii avizelor/acordurilor/autorizatiilor	56 days	Tue 1/26/21	Mon 3/22/21			0.00 lei	[Gantt bar from Jan 2021 to Mar 2021]											
10		Activitati necesare implementarii Planului de Actiune pentru Promovarea Contractului - Panourile pentru afisare temporara sunt proiectate si instalate	56 days	Tue 1/26/21	Mon 3/22/21			0.00 lei	[Gantt bar from Jan 2021 to Mar 2021]											
11		Programul de Executie detaliat al intregului Contract, in care activitatile si resursele aferente executiei Lucrarilor vor fi prezentate la un nivel de detaliu adaptat, este finalizat si acceptat de catre Supervisor, devenind astfel Programul de	56 days	Tue 1/26/21	Mon 3/22/21			0.00 lei	[Gantt bar from Jan 2021 to Mar 2021]											
12		<b>Punct de referinta nr. 2</b>	126 day	Tue 1/26/21	Mon 5/31/21	2SS		0.00 lei	[Milestone diamond at 5/31]											
13		<b>Punctul de referinta nr. 1 este indeplinit in totalitate</b>	0 days	Mon 3/22/21	Mon 3/22/21	5		0.00 lei	[Milestone diamond at 3/22]											
14		Avizele/acordurile/autorizatiile sunt obtinute si sunt favorabile	126 days	Tue 1/26/21	Mon 5/31/21			0.00 lei	[Gantt bar from Jan 2021 to May 2021]											
15		Predare la Supervisor si Beneficiar, Proiect pentru Autorizarea Lucrarilor de Constructie (PAC), in conformitate cu Legea 10/1995 (documentatie vizata de verificator proiect atestat)	126 days	Tue 1/26/21	Mon 5/31/21			0.00 lei	[Gantt bar from Jan 2021 to May 2021]											
16		Studii de teren - Finalizare raport studiu geotehnic	126 days	Tue 1/26/21	Mon 5/31/21			0.00 lei	[Gantt bar from Jan 2021 to May 2021]											
17		Studii de teren - Finalizare raport studiu geologic	126 days	Tue 1/26/21	Mon 5/31/21			0.00 lei	[Gantt bar from Jan 2021 to May 2021]											
18		Studii de teren - Finalizare raport studii hidrologice si hidrogeotehnice	126 days	Tue 1/26/21	Mon 5/31/21			0.00 lei	[Gantt bar from Jan 2021 to May 2021]											
19		Studii de teren - Finalizare raport studii topografice si de stabilitate ale terenului	126 days	Tue 1/26/21	Mon 5/31/21			0.00 lei	[Gantt bar from Jan 2021 to May 2021]											
20		<b>Punct de referinta nr. 3</b>	168 day	Tue 1/26/21	Mon 7/12/21	2SS		0.00 lei	[Milestone diamond at 7/12]											
21		<b>Punctul de referinta nr. 2 este indeplinit in totalitate</b>	0 days	Mon 5/31/21	Mon 5/31/21	12		0.00 lei	[Milestone diamond at 5/31]											
22		Proiectul pentru autorizarea lucrarilor de constructie (PAC) este aprobat de catre Supervisor	168 days	Tue 1/26/21	Mon 7/12/21			0.00 lei	[Gantt bar from Jan 2021 to Jul 2021]											
23		<b>Punct de referinta nr. 4</b>	322 day	Tue 1/26/21	Mon 12/13/21	2SS		0.00 lei	[Milestone diamond at 12/13]											
24		<b>Punctul de referinta nr. 3 este indeplinit in totalitate</b>	0 days	Mon 7/12/21	Mon 7/12/21	20		0.00 lei	[Milestone diamond at 7/12]											
25		Proiectul Tehnic de Executie si Detaliile de Executie sunt predate la Supervisor si Beneficiar, in conformitate cu Legea 10/1995 (documentatie vizata de verificator proiect atestat)	322 days	Tue 1/26/21	Mon 12/13/21			0.00 lei	[Gantt bar from Jan 2021 to Dec 2021]											
26		Autorizatie de Construire a fost obtinuta	322 days	Tue 1/26/21	Mon 12/13/21			0.00 lei	[Gantt bar from Jan 2021 to Dec 2021]											
27		<b>Punct de referinta nr. 5</b>	364 day	Tue 1/26/21	Mon 1/24/22	2SS		0.00 lei	[Milestone diamond at 1/24/22]											
28		<b>Punctul de referinta nr. 4 este indeplinit in totalitate</b>	0 days	Mon 12/13/21	Mon 12/13/21	23		0.00 lei	[Milestone diamond at 12/13/21]											

3A2 - Nadaselu - Mihaiesti si 3B1 - Mihaiesti - Zimbor Date: Tue 2/23/21	Task	[Blue bar]	Project Summary	Inactive Milestone	[Light blue bar]	Manual Summary Rollup	[Thin blue bar]	Deadline
	Split	[Light blue bar]	External Tasks	Inactive Summary	[Thin blue bar]	Manual Summary	[Thin blue bar]	Progress
	Milestone	[Diamond]	External Milestone	Manual Task	[Blue bar]	Start-only	[C]	Manual Progress
	Summary	[Thin blue bar]	Inactive Task	Duration-only	[Blue bar]	Finish-only	[J]	



ID	Task Mod	Task Name	Duration	Start	Finish	Prede: Resou Cost Name	2021															
							Qtr 4, 2020	Qtr 1, 2021	Qtr 2, 2021	Qtr 3, 2021	Qtr 4, 2021											
							Sep	Oct	Nov	Dec	Jan	Feb	Mar	Apr	May	Jun	Jul	Aug	Sep	Oct	Nov	D
29		Activitatea de cercetare arheologica preventiva in vederea descarcarii de sarcina arheologica pentru zonele delimitate ca situri arheologice este finalizata	364 days	Tue 1/26/21	Mon 1/24/22	7SS	0.00 lei															
30		Proiectul Tehnic de Executie si Detaliile de Executie sunt aprobate de Supervizor	364 days	Tue 1/26/21	Mon 1/24/22	25SS	0.00 lei															
31		<b>Organizarea de Santier a Antreprenorului este finalizata si fun</b>	364 days	Tue 1/26/21	Mon 1/24/22		0.00 lei															
32		Tot personalul cheie al Antreprenorului este mobilizat in Santier	364 days	Tue 1/26/21	Mon 1/24/22	6SS	0.00 lei															
33		Noul Program de Executie detaliat al intregului Contract, cu prezentarea activitatilor si resurselor aferente executiei Lucrarilor; precum si, noul Program de Executie completat/corectat este acceptat de catre Supervizor, devenind	364 days	Tue 1/26/21	Mon 1/24/22	32SS	0.00 lei															
34		Toate utilajele, echipamentele, resursele tehnice si materiale ale Antreprenorului asa cum sunt mentionate in Programul de Executie/Referinta sunt mobilizate	364 days	Tue 1/26/21	Mon 1/24/22	32SS	0.00 lei															
35		Jurnal de Santier este constituit de catre Antreprenor conform Clauzei 39-Conditiile Generale, in formatul agreeat de Supervizor	364 days	Tue 1/26/21	Mon 1/24/22	32SS	0.00 lei															
36		<b>Laboratorul Antreprenorului de analize si incercari in constructii este asigurat conform Cerintelor Beneficiarului, Sub-Cap.9.27-Laboratorul de pe santier</b>	<b>350 days</b>	<b>Tue 1/26/21</b>	<b>Mon 1/10/22</b>	<b>32SS</b>	<b>0.00 lei</b>															
37		Planul General de Management este aprobat de catre Supervizor si Beneficiar	364 days	Tue 1/26/21	Mon 1/24/22	32SS	0.00 lei															
38		Planul de Management de Mediu este aprobat de Supervizorul	364 days	Tue 1/26/21	Mon 1/24/22	32SS	0.00 lei															
39		<b>ETAPA DE EXECUTIE A CONTRACTULUI [ INCLUSIV NOTIFICARI, INSPECTII SI TESTARI, in conformitate cu Cerintelor Beneficiarului, stipulate contractual si ASISTENTA</b>	<b>992 days</b>	<b>Wed 5/5/21</b>	<b>Sun 1/21/24</b>		<b>1,306,511,012.84 lei</b>															
40		Punctul de referinta nr. 5 este indeplinit in totalitate	0 days	Mon 1/24/22	Mon 1/24/22	27	0.00 lei															
41		Organizare DE SANTIER	60 days	Wed 5/5/21	Sat 7/3/21	2SS+1Munc	1.396,800.00 lei															
42		<b>LUCRARI DE DRUM</b>	<b>693 day</b>	<b>Tue 1/25/22</b>	<b>Mon 12/18/23</b>	<b>36FS+</b>	<b>352,046,178.67 lei</b>															
43		<b>Terasamente</b>	<b>545 day</b>	<b>Tue 1/25/22</b>	<b>Sun 7/23/23</b>		<b>163,017,113.90 lei</b>															
44		Terasamente	169 day	Tue 1/25/22	Tue 7/12/22	45SS	163,017,113.90 lei															
45		Decapare pamant vegetal	40 days	Tue 1/25/22	Sat 3/5/22	Autob	0.00 lei															
46		Curatire si defrisare	10 days	Tue 1/25/22	Thu 2/3/22	45SS Autob	0.00 lei															
47		Sapatura de pamant in corp drum	70 days	Tue 1/25/22	Mon 4/4/22	46SS Autog	0.00 lei															
48		Umplutura cu pamant	90 days	Mon 3/14/22	Sat 6/11/22	47SS+ Autob	0.00 lei															
49		Imbracare taluze cu pamant vegetal	30 days	Mon 6/13/22	Sun 7/23/23	48 Autob	0.00 lei															
50		<b>Structura rutiera</b>	<b>230 day</b>	<b>Mon 3/21/22</b>	<b>Sat 11/5/22</b>		<b>122,401,840.03 lei</b>															
51		Strat de forma	20 days	Mon 3/21/22	Sat 4/9/22	48SS+ Autob	0.00 lei															
52		Fundatie de balast	20 days	Sun 4/10/22	Fri 4/29/22	51 Autob	35,727,375.83 lei															
53		Strat din agregate naturale stabilizate	60 days	Sat 4/30/22	Tue 6/28/22	52 Autob	19,448,513.82 lei															
54		Strat de baza din mixtura asfaltica	60 days	Wed 6/29/22	Sat 8/27/22	53 Autob	26,005,802.07 lei															
55		Strat de legatura - Binder cu bitum modificat BAD 25	30 days	Sun 8/28/22	Mon 9/26/22	54 Autob	18,489,605.61 lei															
56		Strat de uzura - Mixtura asfaltica cu fibre si bitum modificat, MAS16	40 days	Tue 9/27/22	Sat 11/5/22	55 Autob comp:	22,730,542.70 lei															
57		<b>Lucrari de drenaj (santuri, rigole, casiuri)</b>	<b>558 day</b>	<b>Mon 5/9/22</b>	<b>Fri 11/17/23</b>		<b>27,518,770.81 lei</b>															
58		Lucrari de drenaj	189 day	Mon 5/9/22	Fri 11/17/23	Autok	27,518,770.81 lei															
59		<b>Parapete si imprejmuiuri [lucrari de drum]</b>	<b>268 day</b>	<b>Sun 11/6/22</b>	<b>Mon 7/31/23</b>	<b>56</b>	<b>26,360,469.04 lei</b>															
60		Parapeti de siguranta rutiera	100 days	Sun 11/6/22	Mon 7/31/23	56 Sonet:	26,360,469.04 lei															

3A2 - Nadaselu - Mihaiesti si 3B1 - Mihaiesti - Zimbor Date: Tue 2/23/21	Task		Project Summary	Inactive Milestone	Manual Summary Rollup		Deadline	
	Split		External Tasks	Inactive Summary	Manual Summary		Progress	
	Milestone		External Milestone	Manual Task		Start-only		Manual Progress
	Summary		Inactive Task	Duration-only		Finish-only		



ID	Task Mod	Task Name	Duration	Start	Finish	Prede: Resou	Cost	2021														
								Qtr 4, 2020			Qtr 1, 2021		Qtr 2, 2021			Qtr 3, 2021		Qtr 4, 2021				
								Sep	Oct	Nov	Dec	Jan	Feb	Mar	Apr	May	Jun	Jul	Aug	Sep	Oct	Nov
61		<b>Semnalizare rutiera</b>	<b>183 day</b>	<b>Mon 6/19/22</b>	<b>Mon 12/18/22</b>	<b>50</b>	<b>12,747,984.89 lei</b>															
62		Semnalizare rutiera	100 day	Mon 6/19/22	Mon 12/18/22	56	Autob	12,747,984.89 lei														
63		<b>LUCRARI DE CONSOLIDARE</b>	<b>251 day</b>	<b>Tue 1/25/22</b>	<b>Sun 10/2/22</b>	<b>47SS</b>	<b>99,632,435.33 lei</b>															
64		Lucrari consolidare	251 day	Tue 1/25/22	Sun 10/2/22		Autob	99,632,435.33 lei														
65		<b>LUCRARI DE ARTA</b>	<b>727 day</b>	<b>Tue 1/25/22</b>	<b>Sun 1/21/24</b>	<b>43SS</b>	<b>698,417,885.54 lei</b>															
66		<b>1. Viaduct km 9+213</b>	<b>727 day</b>	<b>Tue 1/25/22</b>	<b>Sun 1/21/24</b>	<b>43SS</b>	<b>67,309,922.69 lei</b>															
67		Lucrari de infrastructura - Fundatii pile si culei	315 day	Tue 1/25/22	Tue 6/13/23	45SS	Autob	24,231,572.17 lei														
68		Lucrari de infrastructura - Elevatii pile si culei	236 day	Sun 8/28/22	Fri 8/4/23	67SS+	Autob	5,384,793.82 lei														
69		Structura de rezistenta	100 day	Sat 8/5/23	Sun 11/12/23	68	Autob	31,635,663.66 lei														
70		Racordari cu terasamentele	70 days	Mon 11/13/22	Sun 1/21/24	69	Autob	673,099.23 lei														
71		cale+trotuar+parapet	47 days	Tue 11/21/23	Sat 1/6/24	70SS+	Autob	5,384,793.81 lei														
72		<b>2. Pasaj km 10+080</b>	<b>241 day</b>	<b>Fri 2/4/22</b>	<b>Sun 10/2/22</b>	<b>47SS</b>	<b>2,164,756.15 lei</b>															
73		Lucrari de infrastructura - Fundatii pile si culei	80 days	Fri 2/4/22	Sun 4/24/22	67SS+	Autob	649,426.85 lei														
74		Lucrari de infrastructura - Elevatii pile si culei	63 days	Mon 4/25/22	Sun 6/26/22	73	Autob	238,123.18 lei														
75		Structura de rezistenta	60 days	Mon 6/27/22	Thu 8/25/22	74	Autob	887,550.02 lei														
76		Racordari cu terasamentele	30 days	Fri 8/26/22	Sat 9/24/22	75	Autob	173,180.49 lei														
77		cale+trotuar+parapet	28 days	Mon 9/5/22	Sun 10/2/22	76SS+	Autob	216,475.61 lei														
78		<b>3. Viaduct km 11+560</b>	<b>284 day</b>	<b>Mon 2/14/22</b>	<b>Thu 11/24/22</b>	<b>47SS</b>	<b>23,799,609.46 lei</b>															
79		Lucrari de infrastructura - Fundatii pile si culei	125 day	Mon 2/14/22	Sat 6/18/22	73SS+	Autob	9,281,847.69 lei														
80		Lucrari de infrastructura - Elevatii pile si culei	84 days	Fri 4/15/22	Thu 7/7/22	79SS+	Autob	1,903,968.76 lei														
81		Structura de rezistenta	70 days	Fri 7/8/22	Thu 9/15/22	80	Autob	9,995,835.97 lei														
82		Racordari cu terasamentele	60 days	Fri 9/16/22	Mon 11/14/22	81	Autob	713,988.28 lei														
83		cale+trotuar+parapet	60 days	Mon 9/26/22	Thu 11/24/22	82SS+	Autob	1,903,968.76 lei														
84		<b>4. Viaduct km 12+143</b>	<b>533 day</b>	<b>Thu 2/24/22</b>	<b>Thu 8/10/23</b>	<b>47SS</b>	<b>21,758,769.76 lei</b>															
85		Lucrari de infrastructura - Fundatii pile si culei	149 day	Thu 2/24/22	Fri 7/22/22	79SS+	Autob	8,921,095.60 lei														
86		Lucrari de infrastructura - Elevatii pile si culei	80 days	Sat 7/23/22	Mon 10/10/22	85	Autob	2,175,876.98 lei														
87		Structura de rezistenta	70 days	Tue 10/11/22	Mon 12/19/22	86	Autob	8,268,332.51 lei														
88		Racordari cu terasamentele	60 days	Mon 6/12/23	Thu 8/10/23		Autob	870,350.79 lei														
89		cale+trotuar+parapet	40 days	Thu 6/22/23	Mon 7/31/23	88SS+	Autob	1,523,113.88 lei														
90		<b>5. Pod km 12+987</b>	<b>523 day</b>	<b>Sun 3/6/22</b>	<b>Thu 8/10/23</b>	<b>47SS</b>	<b>25,389,366.00 lei</b>															
91		Lucrari de infrastructura - Fundatii pile si culei	115 day	Sun 3/6/22	Tue 6/28/22	85SS+	Autob	10,409,640.06 lei														
92		Lucrari de infrastructura - Elevatii pile si culei	80 days	Wed 6/29/22	Fri 9/16/22	91	Autob	3,300,617.58 lei														
93		Structura de rezistenta	70 days	Sat 9/17/22	Fri 11/25/22	92	Autob	9,394,065.42 lei														
94		Racordari cu terasamentele	60 days	Mon 6/12/23	Thu 8/10/23		Autob	507,787.32 lei														
95		cale+trotuar+parapet	50 days	Thu 6/22/23	Thu 8/10/23	94SS+	Autob	1,777,255.62 lei														
96		<b>6. Pasaj inferior km 13+881</b>	<b>220 day</b>	<b>Wed 3/16/22</b>	<b>Fri 10/21/22</b>	<b>47SS</b>	<b>3,395,813.21 lei</b>															
97		Lucrari de infrastructura - Fundatii pile si culei	90 days	Wed 3/16/22	Mon 6/13/22	91SS+	Autob	1,222,492.76 lei														
98		Lucrari de infrastructura - Elevatii pile si culei	50 days	Tue 6/14/22	Tue 8/2/22	97	Autob	271,665.06 lei														
99		Structura de rezistenta	40 days	Wed 8/3/22	Sun 9/11/22	98	Autob	1,596,032.21 lei														
100		Racordari cu terasamentele	30 days	Mon 9/12/22	Tue 10/11/22	99	Autob	33,958.13 lei														
101		cale+trotuar+parapet	30 days	Thu 9/22/22	Fri 10/21/22	100SS	Autob	271,665.05 lei														
102		<b>7. Pod km 14+110</b>	<b>465 day</b>	<b>Sat 3/26/22</b>	<b>Mon 7/3/23</b>	<b>47SS</b>	<b>16,952,609.82 lei</b>															
103		Lucrari de infrastructura - Fundatii pile si culei	144 day	Sat 3/26/22	Tue 8/16/22	97SS+	Autob	6,781,043.93 lei														
104		Lucrari de infrastructura - Elevatii pile si culei	80 days	Wed 8/17/22	Fri 11/4/22	103	Autob	1,864,787.08 lei														

3A2 - Nadaselu - Mihaiesti si  
3B1 - Mihaiesti - Zimbor  
Date: Tue 2/23/21

Task		Project Summary		Inactive Milestone		Manual Summary Rollup		Deadline	
Split		External Tasks		Inactive Summary		Manual Summary		Progress	
Milestone		External Milestone		Manual Task		Start-only		Manual Progress	
Summary		Inactive Task		Duration-only		Finish-only			



ID	Task Mod	Task Name	Duration	Start	Finish	Prede:	Resou	Cost	2021															
									Qtr 4, 2020			Qtr 1, 2021		Qtr 2, 2021		Qtr 3, 2021		Qtr 4, 2021						
									Sep	Oct	Nov	Dec	Jan	Feb	Mar	Apr	May	Jun	Jul	Aug	Sep	Oct	Nov	D
105		Structura de rezistenta	29 days	Sat 11/5/22	Thu 5/4/23	104	Autob	6,441,991.73 lei																
106		Racordari cu terasamentele	60 days	Fri 5/5/23	Mon 7/3/23	105	Autob	508,578.29 lei																
107		cale+trotuar+parapet	40 days	Mon 5/15/23	Fri 6/23/23	106SS	Autob	1,356,208.79 lei																
108		<b>8. Viaduct km 14+609</b>	<b>291 day:</b>	<b>Tue 1/25/22</b>	<b>Fri 11/11/22</b>			<b>30,336,456.65 lei</b>																
109		Lucrari de infrastructura - Fundatii pile si culei	200 days	Tue 1/25/22	Fri 8/12/22	45SS	Autob	12,134,582.66 lei																
110		Lucrari de infrastructura - Elevatii pile si culei	81 days	Wed 3/16/22	Sat 6/4/22	109SS	Autob	2,730,281.10 lei																
111		Structura de rezistenta	90 days	Sun 6/5/22	Fri 9/2/22	110	Autob	12,741,311.79 lei																
112		Racordari cu terasamentele	70 days	Sat 9/3/22	Fri 11/11/22	111	Autob	606,729.13 lei																
113		cale+trotuar+parapet	50 days	Tue 9/13/22	Tue 11/1/22	112SS	Autob	2,123,551.97 lei																
114		<b>9. Pod km 16+227</b>	<b>614 day:</b>	<b>Fri 2/4/22</b>	<b>Tue 10/10/23</b>			<b>29,744,027.26 lei</b>																
115		Lucrari de infrastructura - Fundatii pile si culei	280 days	Fri 2/4/22	Thu 11/10/22	109SS	Autob	13,682,252.54 lei																
116		Lucrari de infrastructura - Elevatii pile si culei	160 days	Mon 8/8/22	Sat 5/13/23	115SS	Autob	2,676,962.45 lei																
117		Structura de rezistenta	80 days	Sun 5/14/23	Tue 8/1/23	116	Autob	10,410,409.54 lei																
118		Racordari cu terasamentele	70 days	Wed 8/2/23	Tue 10/10/23	117	Autob	892,320.82 lei																
119		cale+trotuar+parapet	60 days	Sat 8/12/23	Tue 10/10/23	118SS	Autob	2,082,081.91 lei																
120		<b>10. Pod km 17+589</b>	<b>269 day:</b>	<b>Mon 2/14/22</b>	<b>Wed 11/9/22</b>			<b>17,072,772.01 lei</b>																
121		Lucrari de infrastructura - Fundatii pile si culei	127 days	Mon 2/14/22	Mon 6/20/22	115SS	Autob	5,804,742.48 lei																
122		Lucrari de infrastructura - Elevatii pile si culei	20 days	Tue 6/21/22	Sun 7/10/22	121	Autob	2,048,732.64 lei																
123		Structura de rezistenta	60 days	Mon 7/11/22	Fri 9/9/22	122	Autob	6,999,836.52 lei																
124		Racordari cu terasamentele	60 days	Sat 9/10/22	Wed 11/9/22	123	Autob	853,638.60 lei																
125		cale+trotuar+parapet	40 days	Tue 9/20/22	Sat 10/29/22	124SS	Autob	1,365,821.77 lei																
126		<b>11. Pod km 18+223</b>	<b>123 day:</b>	<b>Thu 2/24/22</b>	<b>Sun 6/26/22</b>			<b>7,622,643.42 lei</b>																
127		Lucrari de infrastructura - Fundatii pile si culei	40 days	Thu 2/24/22	Mon 4/4/22	121SS	Autob	3,658,868.84 lei																
128		Lucrari de infrastructura - Elevatii pile si culei	40 days	Fri 3/11/22	Thu 4/21/22	127SS	Autob	1,448,302.25 lei																
129		Structura de rezistenta	31 days	Fri 4/22/22	Sun 5/22/22	128	Autob	1,524,528.68 lei																
130		Racordari cu terasamentele	20 days	Mon 5/23/22	Sat 6/11/22	129	Autob	609,811.47 lei																
131		cale+trotuar+parapet	15 days	Sun 6/12/22	Sun 6/26/22	130	Autob	381,132.18 lei																
132		<b>12. Pod km 18+500</b>	<b>126 day:</b>	<b>Sun 3/6/22</b>	<b>Sat 7/9/22</b>			<b>7,832,260.64 lei</b>																
133		Lucrari de infrastructura - Fundatii pile si culei	43 days	Sun 3/6/22	Sun 4/17/22	127SS	Autob	3,916,130.32 lei																
134		Lucrari de infrastructura - Elevatii pile si culei	43 days	Mon 3/21/22	Mon 5/2/22	133SS	Autob	1,174,839.10 lei																
135		Structura de rezistenta	30 days	Tue 5/3/22	Wed 6/1/22	134	Autob	1,409,806.92 lei																
136		Racordari cu terasamentele	20 days	Thu 6/2/22	Fri 6/24/22	135	Autob	1,018,193.88 lei																
137		cale+trotuar+parapet	15 days	Sat 6/25/22	Sat 7/9/22	136	Autob	313,290.42 lei																
138		<b>13. Pod km 18+845</b>	<b>262 day:</b>	<b>Wed 3/16/22</b>	<b>Fri 12/2/22</b>			<b>13,674,983.27 lei</b>																
139		Lucrari de infrastructura - Fundatii pile si culei	84 days	Wed 3/16/22	Tue 6/7/22	133SS	Autob	6,974,241.47 lei																
140		Lucrari de infrastructura - Elevatii pile si culei	80 days	Wed 6/8/22	Tue 8/30/22	139	Autob	2,187,997.32 lei																
141		Structura de rezistenta	50 days	Wed 8/31/22	Sun 10/23/22	140	Autob	2,734,996.65 lei																
142		Racordari cu terasamentele	30 days	Mon 10/24/2	Tue 11/22/22	141	Autob	1,230,748.49 lei																
143		cale+trotuar+parapet	30 days	Thu 11/3/22	Fri 12/2/22	142SS	Autob	546,999.34 lei																
144		<b>14. Pod km 20+088</b>	<b>279 day:</b>	<b>Sat 3/26/22</b>	<b>Thu 12/29/22</b>			<b>50,130,714.85 lei</b>																
145		Lucrari de infrastructura - Fundatii pile si culei	120 days	Sat 3/26/22	Sun 7/24/22	139SS	Autob	19,049,671.64 lei																
146		Lucrari de infrastructura - Elevatii pile si culei	180 days	Mon 4/4/22	Fri 9/30/22	145SS	Autob	3,509,150.04 lei																
147		Structura de rezistenta	80 days	Sat 10/1/22	Tue 12/20/22	146	Autob	23,060,128.83 lei																
148		Racordari cu terasamentele	60 days	Mon 10/31/2	Thu 12/29/22	147SS	Autob	501,307.15 lei																

3A2 - Nadaselu - Mihaiesti si  
3B1 - Mihaiesti - Zimbor  
Date: Tue 2/23/21

Task		Project Summary	Inactive Milestone	Manual Summary Rollup		Deadline
Split		External Tasks	Inactive Summary	Manual Summary		Progress
Milestone		External Milestone	Manual Task	Start-only		Manual Progress
Summary		Inactive Task	Duration-only	Finish-only		



ID	Task Mod	Task Name	Duration	Start	Finish	Prede	Resou	Cost	2021															
									Qtr 4, 2020			Qtr 1, 2021		Qtr 2, 2021			Qtr 3, 2021		Qtr 4, 2021					
									Sep	Oct	Nov	Dec	Jan	Feb	Mar	Apr	May	Jun	Jul	Aug	Sep	Oct	Nov	Dec
149		cale+trotuar+parapet	50 days	Thu 11/10/22	Thu 12/29/22	148SS	Autob	4,010,457.19 lei																
150		<b>15. Pod km 21+314</b>	<b>321 days</b>	<b>Tue 1/25/22</b>	<b>Sun 12/11/22</b>			<b>21,302,039.03 lei</b>																
151		Lucrari de infrastructura - Fundatii pile si culei	130 days	Tue 1/25/22	Fri 6/3/22	45SS	Autob	8,520,815.61 lei																
152		Lucrari de infrastructura - Elevatii pile si culei	79 days	Sat 6/4/22	Sun 8/21/22	151	Autob	2,343,224.29 lei																
153		Structura de rezistenta	60 days	Mon 8/22/22	Fri 10/21/22	152	Autob	7,881,754.44 lei																
154		Racordari cu terasamentele	50 days	Sat 10/22/22	Sun 12/11/22	153	Autob	852,081.56 lei																
155		cale+trotuar+parapet	40 days	Tue 11/1/22	Sat 12/10/22	154SS	Autob	1,704,163.13 lei																
156		<b>16. Pod km 22+609</b>	<b>408 days</b>	<b>Sat 6/4/22</b>	<b>Sun 7/16/23</b>			<b>13,391,902.64 lei</b>																
157		Lucrari de infrastructura - Fundatii pile si culei	95 days	Sat 6/4/22	Tue 9/6/22	151	Autob	5,356,761.06 lei																
158		Lucrari de infrastructura - Elevatii pile si culei	70 days	Wed 9/7/22	Wed 11/16/22	157	Autob	1,607,028.32 lei																
159		Structura de rezistenta	60 days	Mon 3/27/23	Fri 5/26/23		Autob	4,419,327.87 lei																
160		Racordari cu terasamentele	50 days	Sat 5/27/23	Sun 7/16/23	159	Autob	1,205,271.24 lei																
161		cale+trotuar+parapet	25 days	Tue 6/6/23	Fri 6/30/23	160SS	Autob	803,514.15 lei																
162		<b>17. Pod km 23+821</b>	<b>367 days</b>	<b>Wed 9/7/22</b>	<b>Fri 9/8/23</b>			<b>16,886,278.85 lei</b>																
163		Lucrari de infrastructura - Fundatii pile si culei	120 days	Wed 9/7/22	Wed 6/21/23	157	Autob	7,261,099.91 lei																
164		Lucrari de infrastructura - Elevatii pile si culei	80 days	Mon 5/22/23	Thu 8/10/23	163SS	Autob	2,532,941.83 lei																
165		5065883.66	69 days	Thu 5/4/23	Tue 7/11/23	164FF	Autob	5,065,883.66 lei																
166		Racordari cu terasamentele	59 days	Wed 7/12/23	Fri 9/8/23	165	Autob	1,013,176.73 lei																
167		cale+trotuar+parapet	25 days	Sat 7/22/23	Tue 8/15/23	166SS	Autob	1,013,176.72 lei																
168		<b>18. Pasaj pe D.E peste autostrada km 0+880,</b>	<b>78 days</b>	<b>Sun 3/6/22</b>	<b>Sun 5/22/22</b>			<b>2,717,072.43 lei</b>																
169		Lucrari la infrastructura - fundatii	30 days	Sun 3/6/22	Mon 4/4/22	45	Autob	787,951.00 lei																
170		Lucrari la infrastructura -elevatii	20 days	Tue 4/5/22	Sun 4/24/22	169	Autob	353,219.42 lei																
171		Lucrari la suprastructura	20 days	Mon 4/25/22	Sat 5/14/22	170	Autob	1,086,828.97 lei																
172		Racordari cu terasamentele	20 days	Mon 4/25/22	Sat 5/14/22	171SS	Autob	217,365.79 lei																
173		cale+trotuar+parapet	18 days	Thu 5/5/22	Sun 5/22/22	171SS	Autob	271,707.25 lei																
174		<b>19. Viaduct pe autostrada peste parau Borlacului, km 1+360 - km 1+721.40</b>	<b>579 days</b>	<b>Fri 3/11/22</b>	<b>Tue 10/10/23</b>			<b>55,652,952.04 lei</b>																
175		Lucrari la infrastructura - fundatii	100 days	Fri 3/11/22	Sat 6/18/22	45SS+	Autob	20,035,062.73 lei																
176		Lucrari la infrastructura -elevatii	170 day	Sun 6/19/22	Mon 12/5/22	175	Autob	4,452,236.16 lei																
177		Lucrari la suprastructura	140 days	Mon 4/24/23	Sun 9/10/23		Autob	26,156,887.46 lei																
178		Racordari cu terasamentele	30 days	Sun 7/23/23	Mon 8/21/23	177FF	Autob	556,529.52 lei																
179		cale+trotuar+parapet	30 days	Mon 9/11/23	Tue 10/10/23	177	Autob	4,452,236.17 lei																
180		<b>20. Viaduct pe autostrada peste afluent Valea Pustei, km 1+870.36 - km 2+231.78</b>	<b>573 days</b>	<b>Sat 3/26/22</b>	<b>Thu 10/19/23</b>			<b>58,895,793.16 lei</b>																
181		Lucrari la infrastructura - fundatii	80 days	Sat 3/26/22	Mon 6/13/22	45SS+	Autob	14,135,083.76 lei																
182		Lucrari la infrastructura -elevatii	220 day	Tue 6/14/22	Thu 6/1/23	181	Autob	4,038,595.36 lei																
183		Lucrari la suprastructura	170 days	Mon 4/3/23	Tue 9/19/23	182FF	Autob	39,039,755.16 lei																
184		Racordari cu terasamentele	30 days	Wed 7/12/22	Thu 8/10/23	183SS	Autob	1,346,198.45 lei																
185		cale+trotuar+parapet	30 days	Wed 9/20/23	Thu 10/19/23	183	Autob	336,160.43 lei																
186		<b>21. Pasaj pe drum de exploatare peste autostrada - km 3+715</b>	<b>72 days</b>	<b>Tue 4/5/22</b>	<b>Wed 6/15/22</b>			<b>2,814,367.26 lei</b>																
187		Lucrari la infrastructura - fundatii	18 days	Tue 4/5/22	Fri 4/22/22	169	Autob	788,022.83 lei																
188		Lucrari la infrastructura -elevatii	24 days	Sat 4/23/22	Mon 5/16/22	187	Autob	365,867.74 lei																
189		Lucrari la suprastructura	20 days	Tue 5/17/22	Sun 6/5/22	188	Autob	1,153,890.58 lei																
190		Racordari cu terasamentele	14 days	Sun 5/22/22	Sat 6/4/22	189SS	Autob	225,149.38 lei																


3A2 - Nadaselu - Mihaiesti si  
3B1 - Mihaiesti - Zimbor  
Date: Tue 2/23/21

Task		Project Summary		Inactive Milestone		Manual Summary Rollup		Deadline	
Split		External Tasks		Inactive Summary		Manual Summary		Progress	
Milestone		External Milestone		Manual Task		Start-only		Manual Progress	
Summary		Inactive Task		Duration-only		Finish-only			

ID	Task Mod	Task Name	Duration	Start	Finish	Prede: Resou	Cost	2021															
								Qtr 4, 2020			Qtr 1, 2021		Qtr 2, 2021			Qtr 3, 2021		Qtr 4, 2021					
								Sep	Oct	Nov	Dec	Jan	Feb	Mar	Apr	May	Jun	Jul	Aug	Sep	Oct	Nov	D
191		cale+trotuar+parapet	10 days	Mon 6/6/22	Wed 6/15/22	189	Autob	281,436.73 lei															
192		<b>22. Viaduct pe autostrada peste Valea Pustei, km 4+085.61 - km 4+607.03</b>	<b>497 days</b>	<b>Thu 2/24/22</b>	<b>Wed 7/5/23</b>			<b>77,053,514.94 lei</b>															
193		Lucrari la infrastructura - fundatii	80 days	Thu 2/24/22	Mon 5/16/22	45SS+	Autob	14,135,083.76 lei															
194		Lucrari la infrastructura -elevatii	100 day	Tue 5/17/22	Wed 8/24/22	193	Autob	5,384,793.82 lei															
195		Lucrari la suprastructura	99 days	Thu 8/25/22	Mon 5/1/23	194	Autob	38,366,655.93 lei															
196		Racordari cu terasamentele	45 days	Mon 5/22/22	Wed 7/5/23	195FS	Autob	1,346,198.45 lei															
197		cale+trotuar+parapet	60 days	Tue 5/2/23	Fri 6/30/23	195	Autob	17,820,782.98 lei															
198		<b>23. Viaduct pe autostrada peste Valea Bobii, km 5+360 - km 5+447</b>	<b>447 days</b>	<b>Thu 2/24/22</b>	<b>Tue 5/16/23</b>			<b>26,957,458.82 lei</b>															
199		Lucrari la infrastructura - fundatii	79 days	Thu 2/24/22	Fri 5/13/22	45SS+	Autob	10,782,983.53 lei															
200		Lucrari la infrastructura -elevatii	100 day	Sat 5/14/22	Sun 8/21/22	199	Autob	3,234,895.06 lei															
201		Lucrari la suprastructura	99 days	Mon 8/22/22	Mon 11/28/22	200	Autob	9,435,110.59 lei															
202		Racordari cu terasamentele	45 days	Sat 10/1/22	Mon 11/14/22	201S	Autob	808,723.76 lei															
203		cale+trotuar+parapet	30 days	Mon 4/17/23	Tue 5/16/23		Autob	2,695,745.88 lei															
204		<b>24. Viaduct pe autostrada peste paraul Silistea, km 7+124 - km 7+725.50</b>	<b>270 days</b>	<b>Sun 3/6/22</b>	<b>Wed 11/30/22</b>			<b>85,393,037.34 lei</b>															
205		Lucrari la infrastructura - fundatii	51 days	Sun 3/6/22	Mon 4/25/22	45SS+	Autob	16,224,677.09 lei															
206		Lucrari la infrastructura -elevatii	110 day	Tue 4/26/22	Sat 8/13/22	205	Autob	5,123,582.24 lei															
207		Lucrari la suprastructura	119 days	Sun 6/5/22	Sat 10/1/22	206SS	Autob	51,235,822.40 lei															
208		Racordari cu terasamentele	40 days	Mon 7/25/22	Fri 9/2/22	207S	Autob	1,707,860.75 lei															
209		cale+trotuar+parapet	60 days	Sun 10/2/22	Wed 11/30/22	207	Autob	11,101,094.86 lei															
210		<b>25. Pasaj pe autostrada peste DC58, KM 12+427 - km 12+445.1</b>	<b>193 days</b>	<b>Tue 4/26/22</b>	<b>Fri 11/4/22</b>			<b>4,101,292.44 lei</b>															
211		Lucrari la infrastructura - fundatii	32 days	Tue 4/26/22	Fri 5/27/22	205	Autob	2,296,723.77 lei															
212		Lucrari la infrastructura -elevatii	52 days	Sat 5/28/22	Mon 7/18/22	211	Autob	615,193.87 lei															
213		Lucrari la suprastructura	79 days	Tue 7/19/22	Wed 10/5/22	212	Autob	533,168.02 lei															
214		Racordari cu terasamentele	20 days	Thu 8/18/22	Tue 9/6/22	213S	Autob	492,155.09 lei															
215		cale+trotuar+parapet	30 days	Thu 10/6/22	Fri 11/4/22	213	Autob	164,051.69 lei															
216		<b>26. Pod pe autostrada peste Paraul Almas, km 12+544 - km 12+148</b>	<b>148 days</b>	<b>Thu 4/28/22</b>	<b>Thu 9/22/22</b>			<b>6,501,404.07 lei</b>															
217		Lucrari la infrastructura - fundatii	38 days	Thu 4/28/22	Sat 6/4/22	211FS	Autob	3,380,730.12 lei															
218		Lucrari la infrastructura -elevatii	62 days	Sun 6/5/22	Fri 8/5/22	217	Autob	780,168.49 lei															
219		Lucrari la suprastructura	80 days	Tue 7/5/22	Thu 9/22/22	218SS	Autob	1,300,280.81 lei															
220		Racordari cu terasamentele	32 days	Thu 8/4/22	Sun 9/4/22	219S	Autob	650,140.41 lei															
221		cale+trotuar+parapet	35 days	Fri 8/19/22	Thu 9/22/22	219SS	Autob	390,084.24 lei															
222		<b>27. Pasaj pe autostrada peste Bretea, km 12+787 - km 12+808.</b>	<b>190 days</b>	<b>Wed 3/16/22</b>	<b>Wed 9/21/22</b>			<b>4,606,834.44 lei</b>															
223		Lucrari la infrastructura - fundatii	31 days	Wed 3/16/22	Fri 4/15/22	45SS+	Autob	1,658,460.40 lei															
224		Lucrari la infrastructura -elevatii	50 days	Sat 4/16/22	Sat 6/4/22	223	Autob	368,546.76 lei															
225		Lucrari la suprastructura	79 days	Sun 6/5/22	Mon 8/22/22	224	Autob	2,165,212.19 lei															
226		Racordari cu terasamentele	36 days	Wed 7/20/22	Wed 8/24/22	225S	Autob	46,068.34 lei															
227		cale+trotuar+parapet	30 days	Tue 8/23/22	Wed 9/21/22	225	Autob	368,546.75 lei															
228		<b>28. Pasaj pe autostrada peste D.N 1G, km 13+105 - km 13+126.</b>	<b>198 days</b>	<b>Thu 5/5/22</b>	<b>Fri 11/18/22</b>			<b>4,959,232.89 lei</b>															
229		Lucrari la infrastructura - fundatii	39 days	Thu 5/5/22	Sun 6/12/22	223SS	Autob	2,677,985.76 lei															
230		Lucrari la infrastructura -elevatii	50 days	Mon 6/13/22	Mon 8/1/22	229	Autob	942,254.25 lei															
231		Lucrari la suprastructura	79 days	Tue 8/2/22	Wed 10/19/22	230	Autob	694,292.60 lei															
232		Racordari cu terasamentele	25 days	Fri 9/23/22	Mon 10/17/22	231S	Autob	396,138.63 lei															

3A2 - Nadaselu - Mihaiesti si  
3B1 - Mihaiesti - Zimbor  
Date: Tue 2/23/21

Task		Project Summary		Inactive Milestone		Manual Summary Rollup		Deadline	
Split		External Tasks		Inactive Summary		Manual Summary		Progress	
Milestone		External Milestone		Manual Task		Start-only		Manual Progress	
Summary		Inactive Task		Duration-only		Finish-only			



ID	Task Mod	Task Name	Duration	Start	Finish	Prede:	Resou	Cost	2021															
									Qtr 4, 2020	Qtr 1, 2021		Qtr 2, 2021			Qtr 3, 2021		Qtr 4, 2021							
									Sep	Oct	Nov	Dec	Jan	Feb	Mar	Apr	May	Jun	Jul	Aug	Sep	Oct	Nov	D
233		cale+trotuar+parapet	30 days	Thu 10/20/22	Fri 11/18/22	231	Autob	247,961.65 lei																
234		<b>PODETE</b>	<b>70 days</b>	<b>Wed 4/20/22</b>	<b>Tue 6/28/22</b>	<b>53FF</b>	<b>Buldc</b>	<b>10,110,739.55 lei</b>																
235		<b>LUCRARI HIDROTEHNICE</b>	<b>100 day</b>	<b>Sat 10/14/22</b>	<b>Sun 1/21/24</b>	<b>65FF</b>	<b>Autol</b>	<b>5,036,111.60 lei</b>																
236		<b>RESTABILIRI LEGATURI RUTIERE</b>	<b>18 days</b>	<b>Mon 3/20/22</b>	<b>Thu 4/6/23</b>	<b>50SS</b>		<b>6,048,437.41 lei</b>																
237		Restabiliri legaturi rutiere	18 days	Mon 3/20/22	Thu 4/6/23	238SS		6,048,437.41 lei																
238		Terasamente	10 days	Mon 3/20/23	Wed 3/29/23		Autob	0.00 lei																
239		Structura drumului	10 days	Sat 3/25/23	Mon 4/3/23	238FS	Autob	0.00 lei																
240		Podete	10 days	Mon 3/20/23	Wed 3/29/23	238FF	Buldo	0.00 lei																
241		Lucrari de drenaj (santuri, rigole, casiuri)	10 days	Sat 3/25/23	Mon 4/3/23	240FS	Buldo	0.00 lei																
242		Parapete si imprejmui	10 days	Sat 3/25/23	Mon 4/3/23	239SS	Sonet	0.00 lei																
243		Siguranta circulatiei	3 days	Tue 4/4/23	Thu 4/6/23	239	Masin	0.00 lei																
244		<b>DRUMURI DE INTRETINERE</b>	<b>18 days</b>	<b>Mon 7/10/22</b>	<b>Thu 7/27/23</b>	<b>50SS</b>		<b>9,354,943.13 lei</b>																
245		Drumuri de intretinere	18 days	Mon 7/10/22	Thu 7/27/23	246SS		9,354,943.13 lei																
246		Terasamente	10 days	Mon 7/10/23	Wed 7/19/23		Autob	0.00 lei																
247		Structura drumului	10 days	Sat 7/15/23	Mon 7/24/23	246SS	Autob	0.00 lei																
248		Podete	10 days	Sat 7/15/23	Mon 7/24/23	247FF	Buldo	0.00 lei																
249		Siguranta circulatiei-porti acces	3 days	Tue 7/25/23	Thu 7/27/23	247	Buldo	0.00 lei																
250		<b>DRUMURI DE ACCES</b>	<b>10 days</b>	<b>Mon 7/10/22</b>	<b>Wed 7/19/23</b>	<b>244SS</b>		<b>484,170.43 lei</b>																
251		Drumuri de acces	10 days	Mon 7/10/22	Wed 7/19/23	252SS		484,170.43 lei																
252		Terasamente	10 days	Mon 7/10/23	Wed 7/19/23		Munci	0.00 lei																
253		Structura drumului	5 days	Sat 7/15/23	Wed 7/19/23	252SS	Autob	0.00 lei																
254		Podete	3 days	Mon 7/17/23	Wed 7/19/23	253FF	Buldo	0.00 lei																
255		<b>SISTEM DE COMUNICARE ITS</b>	<b>421 day</b>	<b>Sun 11/6/22</b>	<b>Sun 12/31/23</b>	<b>50SS</b>		<b>17,646,441.11 lei</b>																
256		ITS	421 day	Sun 11/6/22	Sun 12/31/23	257SS		17,646,441.11 lei																
257		Sistem ITS pe Subsectiunea 3A2: Nadaselu - Mihaiesti, km 8+700 - km 25+500 [conform Anexa 1 - Cerintele Beneficiarului - Specificatii Tehnice sisteme ITS]	162 days	Sun 11/6/22	Sun 4/16/23	56	Munci califica: necali	0.00 lei																
258		Sistem ITS pe Subsectiunea 3B1: Mihaiesti(Cj) - Zimbor(Sj), km 0+000 - km 13+260 [conform Anexa 1 - Cerintele Beneficiarului - Specificatii Tehnice sisteme ITS]	162 days	Sun 11/6/22	Sun 4/16/23	257SS	Munci califica: necali	0.00 lei																
259		<b>NOD RUTIER KM 12+800-ZIMBOR</b>	<b>100 day</b>	<b>Mon 7/31/22</b>	<b>Tue 11/7/23</b>	<b>43SS</b>		<b>19,176,615.69 lei</b>																
260		Nod rutier Zimbor	100 day	Mon 7/31/22	Tue 11/7/23	261SS		19,176,615.69 lei																
261		Terasamente	80 days	Mon 7/31/23	Wed 10/18/23		Autob	0.00 lei																
262		Suprastructura drum	40 days	Tue 9/19/23	Sat 10/28/23	261SS	Autob	0.00 lei																
263		Podete	5 days	Tue 10/24/23	Sat 10/28/23	262FF	Buldo	0.00 lei																
264		Lucrari de drenaj (santuri, rigole, casiuri)	10 days	Tue 10/24/23	Thu 11/2/23	263SS	Buldo	0.00 lei																
265		Parapete si imprejmui	10 days	Sun 10/29/23	Tue 11/7/23	264FS	Sonet	0.00 lei																
266		Siguranta circulatiei	10 days	Tue 10/24/23	Thu 11/2/23	262FS	Masin	0.00 lei																
267		<b>ILUMINAT VIADUCTE SI NODURI RUTIERE</b>	<b>280 day</b>	<b>Thu 4/6/23</b>	<b>Wed 1/10/24</b>	<b>209,2 Munc</b>		<b>22,616,206.64 lei</b>																
268		<b>PARCARE DE SCURTA DURATA - KM 17+800 [stg+dr]</b>	<b>255 day</b>	<b>Tue 1/25/22</b>	<b>Thu 10/6/22</b>	<b>43SS</b>		<b>6,380,925.95 lei</b>																
269		Parcare scurta durata	255 day	Tue 1/25/22	Thu 10/6/22			6,380,925.95 lei																
270		Arhitectura si constructii	184 days	Tue 1/25/22	Wed 7/27/22		Autob	0.00 lei																
271		Drumuri si platforme	50 days	Sat 3/26/22	Sat 5/14/22	270SS	Autob	0.00 lei																
272		Instalatii si echipamente	50 days	Sun 5/15/22	Sun 7/3/22	271	Munci	0.00 lei																
273		<b>PARCARE DE SCURTA DURATA - KM 10+600 [stg+dr]</b>	<b>257 day</b>	<b>Mon 4/24/22</b>	<b>Fri 1/5/24</b>	<b>43SS</b>		<b>6,334,916.92 lei</b>																

3A2 - Nadaselu - Mihaiesti si  
3B1 - Mihaiesti - Zimbor  
Date: Tue 2/23/21

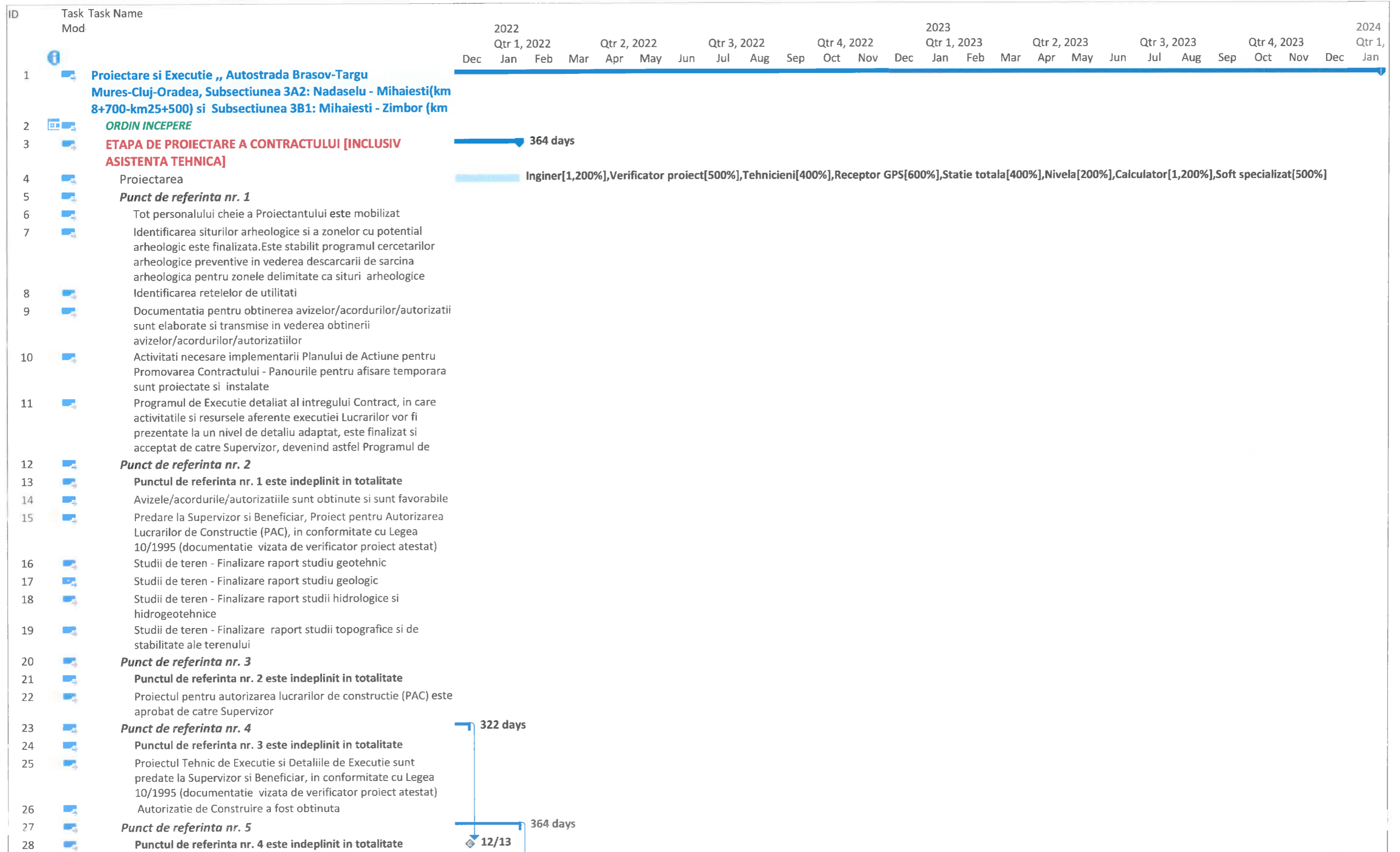
Task		Project Summary	Inactive Milestone	Manual Summary Rollup		Deadline
Split		External Tasks	Inactive Summary	Manual Summary		Progress
Milestone		External Milestone	Manual Task			Manual Progress
Summary		Inactive Task	Duration-only	Finish-only		



ID	Task Mod	Task Name	Duration	Start	Finish	Prede	Resou	Cost Name	2021															
									Qtr 4, 2020	Qtr 1, 2021		Qtr 2, 2021		Qtr 3, 2021		Qtr 4, 2021								
									Sep	Oct	Nov	Dec	Jan	Feb	Mar	Apr	May	Jun	Jul	Aug	Sep	Oct	Nov	D
274		Parcare de scurta durata km 10+600	257 day	Mon 4/24/22	Fri 1/5/24	275SS		6,334,916.92 lei																
275		Arhitectura si constructii	184 days	Mon 4/24/23	Tue 10/24/23		Autob	0.00 lei																
276		Drumuri si platforme	50 days	Tue 6/13/23	Tue 8/1/23	275SS	Autob	0.00 lei																
277		Instalatii si echipamente	50 days	Wed 8/2/23	Wed 9/20/23	276	Munci	0.00 lei																
278		<b>PUNCT DE SPRIJIN PENTRU INTRETINERE - KM 12+920</b>	<b>258 day</b>	<b>Tue 1/25/22</b>	<b>Sun 10/9/22</b>	<b>43SS</b>		<b>5,488,853.83 lei</b>																
279		Punct de sprijin si intretinere km 12+920	258 day	Tue 1/25/22	Sun 10/9/22	280SS		5,488,853.83 lei																
280		Arhitectura si constructii	184 days	Tue 1/25/22	Wed 7/27/22		Autob	0.00 lei																
281		Drumuri si platforme	50 days	Sat 3/26/22	Sat 5/14/22	280SS	Autob	0.00 lei																
282		Instalatii si echipamente	50 days	Sun 5/15/22	Sun 7/3/22	281	Munci	0.00 lei																
283		<b>LUCRARI DE PROTECTIA MEDIULUI</b>	<b>398 day</b>	<b>Wed 6/29/22</b>	<b>Mon 7/31/23</b>			<b>15,771,313.34 lei</b>																
284		Bazine de sedimentare, de dispersie, fitoepuratoare si separatoare de grasimi, produse petroliere	70 days	Wed 6/29/22	Tue 9/6/22	234	Instal: prepa	1,293,511.41 lei																
285		Panouri de protectie impotriva zgomotului	60 days	Fri 6/2/23	Mon 7/31/23	60FF	Munci	13,863,542.85 lei																
286		Lucrari de amenajare Peisagistica	50 days	Sun 8/14/22	Sun 10/2/22	63FF	Munci	614,259.08 lei																
287		<b>AMENAJAREA TERENULUI</b>	<b>694 day</b>	<b>Sun 12/26/22</b>	<b>Sun 11/19/23</b>			<b>28,440,690.14 lei</b>																
288		Lucrari de deviere/mutari/relocari/protejari retele de utilitati	110 days	Mon 2/14/22	Fri 6/3/22	45SS+	Munci	14,846,277.10 lei																
289		Finalizare investigatii arheologice - Supraveghere arheologica	90 days	Tue 1/25/22	Sun 4/24/22	43SS,1	Munci	1,802,000.00 lei																
290		Identificare si curatare teren de munitii neexplodate	30 days	Sun 12/26/21	Mon 1/24/22	29FF	Munci	716,453.04 lei																
291		Orice alte activitati necesare amenajarii terenului	50 days	Sun 8/14/22	Sun 11/19/23	286SS	Munci	11,075,960.00 lei																
292		<b>IMPREJMUIRI</b>	<b>100 day</b>	<b>Sun 9/10/22</b>	<b>Mon 12/18/22</b>	<b>62FF</b>	<b>Munc</b>	<b>1,904,191.56 lei</b>																
293		<b>Activitati necesare implementarii Planului de Actiune pentru Promovarea Contractului ( Placi permante, elaborare si publicare articole de presa etc.)</b>	<b>10 days</b>	<b>Sat 12/9/23</b>	<b>Mon 12/18/23</b>	<b>62FF</b>	<b>Munc necal</b>	<b>223,156.00 lei</b>																
294		Probe tehnologice si Teste, inclusiv ptr instalatiile de iluminare rutiera si comunicare autorizate(prezentare raport rezumativ al testelor si operatiunilor de punere in functiune aferente lucrarilor, inclusiv Certificate de	30 days	Sat 12/9/23	Sun 1/7/24	293SS		0.00 lei																
295		Predarea documentelor conforme cu executia si a Manualelor de operare si intretinere detaliate, conform	10 days	Mon 1/8/24	Wed 1/17/24	294		0.00 lei																
296		<b>RECEPTIA LA TERMINAREA LUCRARILOR</b>	<b>1 day</b>	<b>Wed 1/24/24</b>	<b>Wed 1/24/24</b>	<b>295</b>		<b>0.00 lei</b>																
297		<b>ORGANIZARE DE SANTIER - DEZAFECTARE</b>	<b>10 days</b>	<b>Sun 1/14/24</b>	<b>Tue 1/23/24</b>	<b>296FI</b>	<b>Maca</b>	<b>349,200.00 lei</b>																

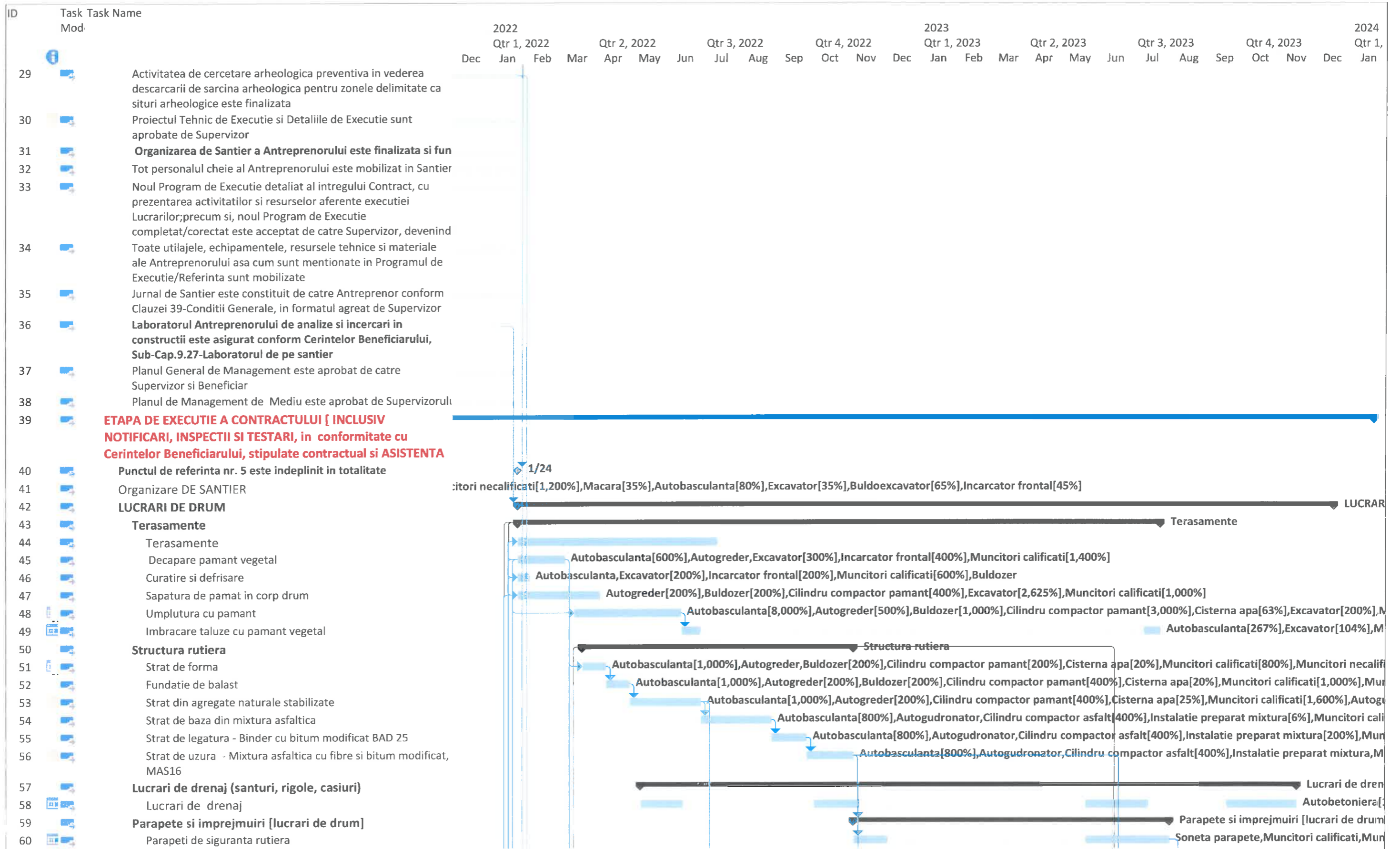
3A2 - Nadaselu - Mihaiesti si 3B1 - Mihaiesti - Zimbor Date: Tue 2/23/21	Task		Project Summary	Inactive Milestone	Manual Summary Rollup		Deadline	
	Split		External Tasks	Inactive Summary	Manual Summary		Progress	
	Milestone		External Milestone	Manual Task		Start-only		Manual Progress
	Summary		Inactive Task	Duration-only	Finish-only			



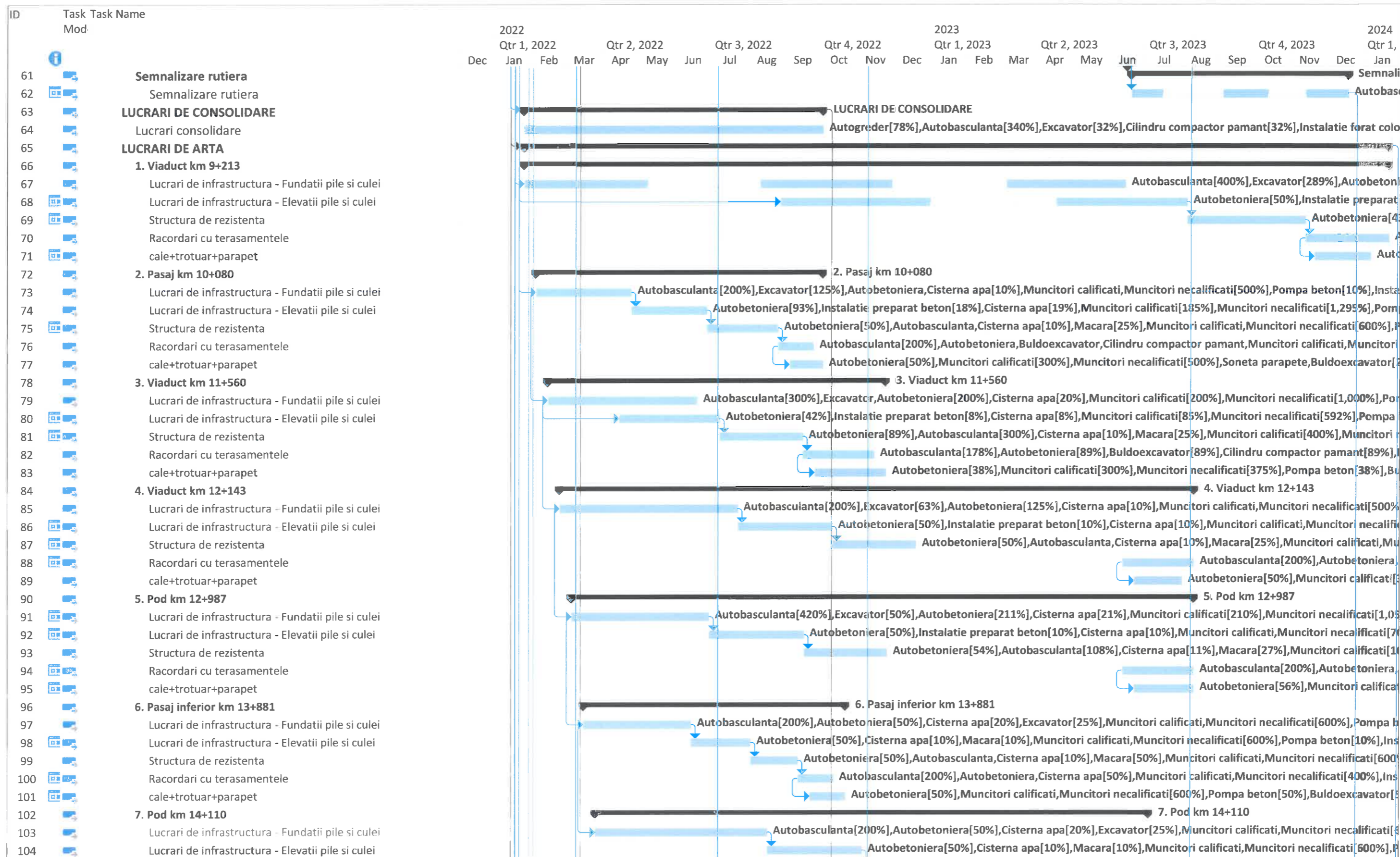


3A2 - Nadaselu - Mihaiesti si 3B1 - Mihaiesti - Zimbor Date: Tue 2/23/21	Task		Project Summary		Inactive Milestone		Manual Summary Rollup		Deadline
	Split		External Tasks		Inactive Summary		Manual Summary		Progress
	Milestone		External Milestone		Manual Task		Start-only		Manual Progress
	Summary		Inactive Task		Duration-only		Finish-only		Manual Progress



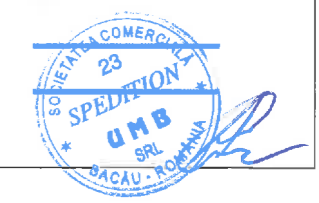


3A2 - Nadaselu - Mihaiesti si 3B1 - Mihaiesti - Zimbor Date: Tue 2/23/21	Task		Project Summary		Inactive Milestone		Manual Summary Rollup		Deadline
	Split		External Tasks		Inactive Summary		Manual Summary		Progress
	Milestone		External Milestone		Manual Task		Start-only		Manual Progress
	Summary		Inactive Task		Duration-only		Finish-only		



3A2 - Nadaselu - Mihaiesti si  
 3B1 - Mihaiesti - Zimbor  
 Date: Tue 2/23/21

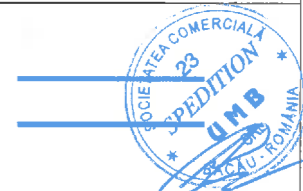
Task		Project Summary	Inactive Milestone		Manual Summary Rollup		Deadline
Split		External Tasks	Inactive Summary		Manual Summary		Progress
Milestone		External Milestone	Manual Task		Start-only		Manual Progress
Summary		Inactive Task	Duration-only		Finish-only		

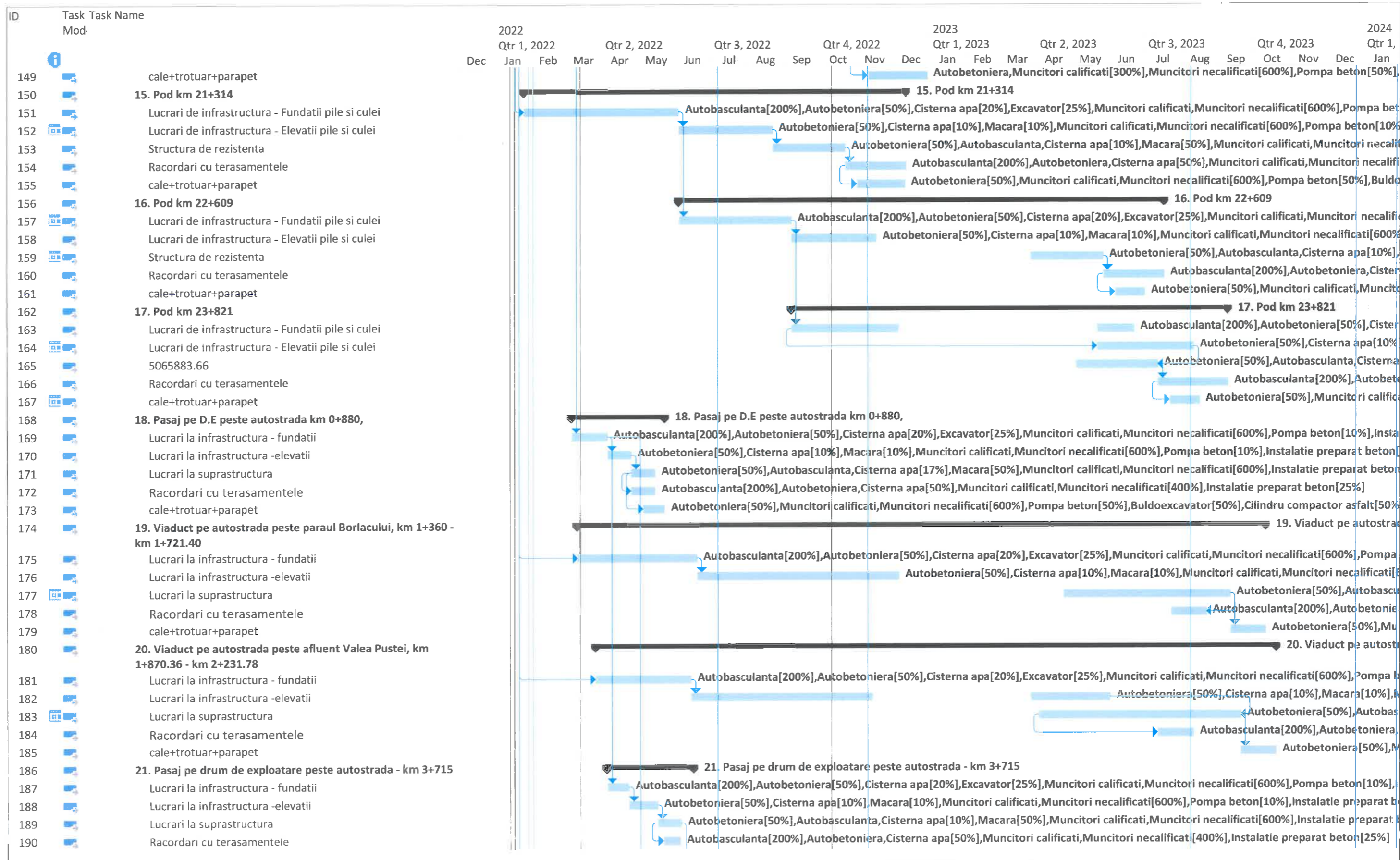




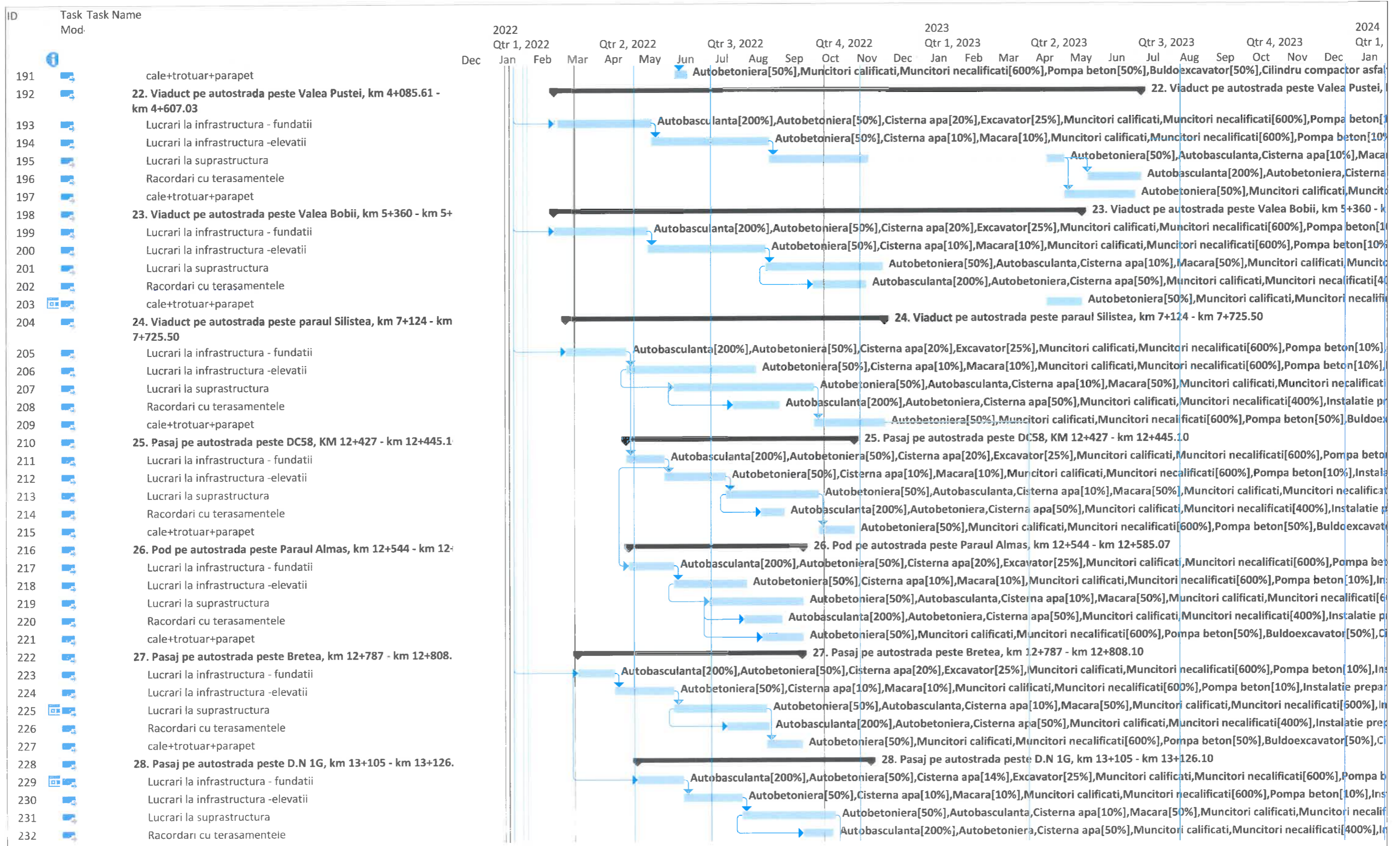
3A2 - Nadaselu - Mihaiesti si  
 3B1 - Mihaiesti - Zimbor  
 Date: Tue 2/23/21

Task		Project Summary		Inactive Milestone		Manual Summary Rollup		Deadline	
Split		External Tasks		Inactive Summary		Manual Summary		Progress	
Milestone		External Milestone		Manual Task		Start-only		Manual Progress	
Summary		Inactive Task		Duration-only		Finish-only			

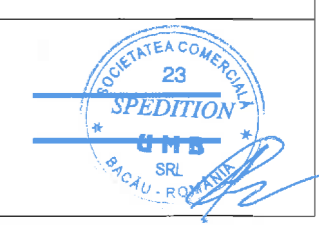


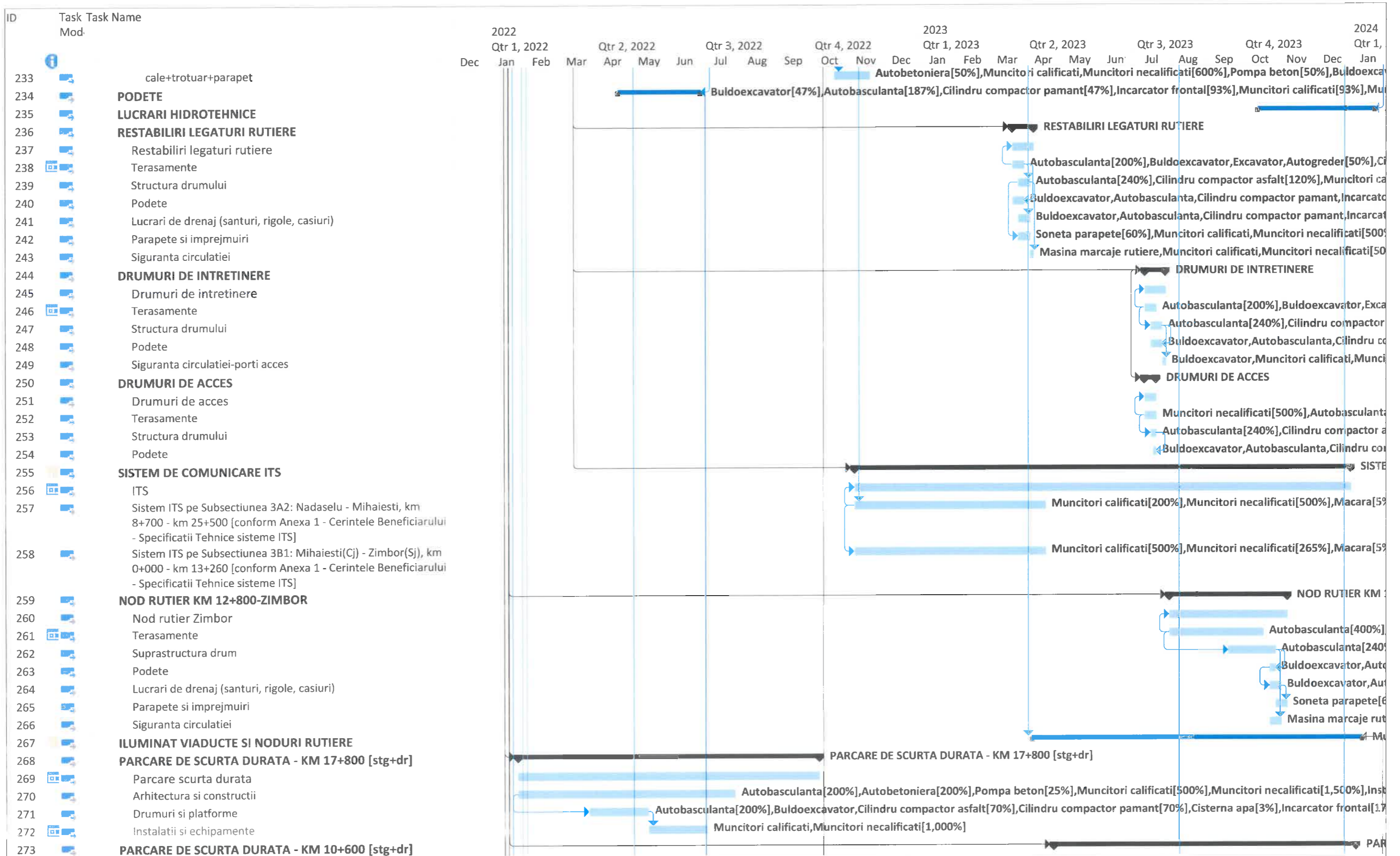


3A2 - Nadaselu - Mihaiesti si 3B1 - Mihaiesti - Zimbor Date: Tue 2/23/21	Task		Project Summary	Inactive Milestone		Manual Summary Rollup		Deadline
	Split		External Tasks	Inactive Summary		Manual Summary		Progress
	Milestone		External Milestone	Manual Task		Start-only		Manual Progress
	Summary		Inactive Task	Duration-only		Finish-only		



3A2 - Nadaselu - Mihalesti si	Task	Project Summary	Inactive Milestone	Manual Summary Rollup	Deadline
3B1 - Mihalesti - Zimbor	Split	External Tasks	Inactive Summary	Manual Summary	Progress
Date: Tue 2/23/21	Milestone	External Milestone	Manual Task	Start-only	Manual Progress
	Summary	Inactive Task	Duration-only	Finish-only	

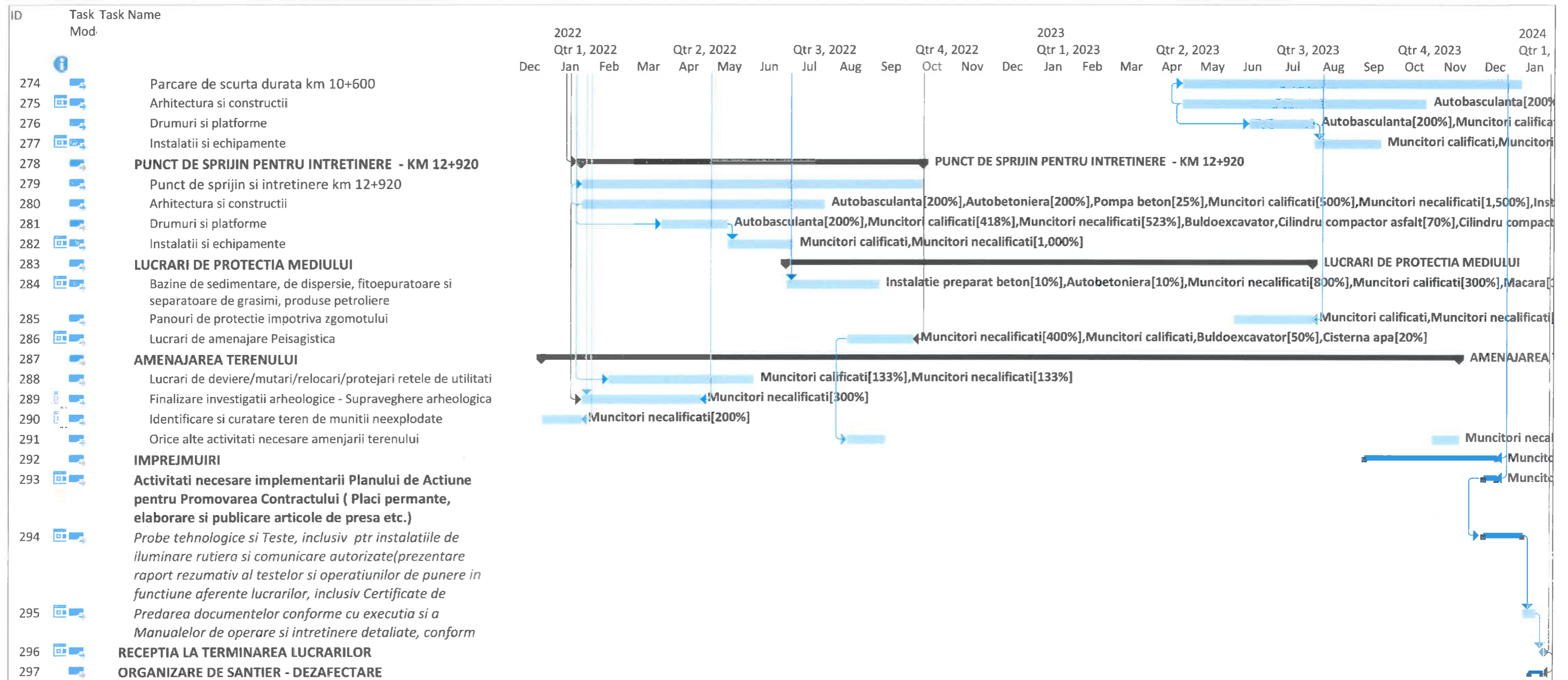




3A2 - Nadaselu - Mihaiesti si  
3B1 - Mihaiesti - Zimbor  
Date: Tue 2/23/21

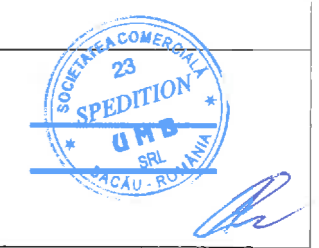
Task		Project Summary		Inactive Milestone		Manual Summary Rollup		Deadline	
Split		External Tasks		Inactive Summary		Manual Summary		Progress	
Milestone		External Milestone		Manual Task		Start-only		Manual Progress	
Summary		Inactive Task		Duration-only		Finish-only			





3A2 - Nadaselu - Mihaiesti si  
 3B1 - Mihaiesti - Zimbor  
 Date: Tue 2/23/21

Task		Project Summary	Inactive Milestone		Manual Summary Rollup		Deadline
Split		External Tasks	Inactive Summary		Manual Summary		Progress
Milestone		External Milestone	Manual Task		Start-only		Manual Progress
Summary		Inactive Task	Duration-only		Finish-only		





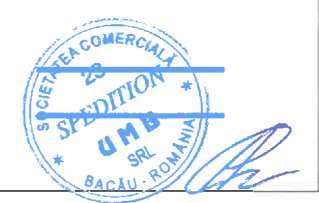
ID	Task Task Name Mod	2024												2025												2026	
		Qtr 1, 2024			Qtr 2, 2024			Qtr 3, 2024			Qtr 4, 2024			Qtr 1, 2025			Qtr 2, 2025			Qtr 3, 2025			Qtr 4, 2025		Qtr 1, 2026		
		Jan	Feb	Mar	Apr	May	Jun	Jul	Aug	Sep	Oct	Nov	Dec	Jan	Feb	Mar	Apr	May	Jun	Jul	Aug	Sep	Oct	Nov	Dec	Jan	Feb
1	<b>Proiectare si Executie ,, Autostrada Brasov-Targu Mures-Cluj-Oradea, Subsectiunea 3A2: Nadaselu - Mihaiesti(km 8+700-km25+500) si Subsectiunea 3B1: Mihaiesti - Zimbor (km</b>																										
2	<b>ORDIN INCEPERE</b>																										
3	<b>ETAPA DE PROIECTARE A CONTRACTULUI [INCLUSIV ASISTENTA TEHNICA]</b>																										
4	Proiectarea																										
5	<b>Punct de referinta nr. 1</b>																										
6	Tot personalului cheie a Proiectantului este mobilizat																										
7	Identificarea siturilor arheologice si a zonelor cu potential arheologic este finalizata.Este stabilit programul cercetarilor arheologice preventive in vederea descarcarii de sarcina arheologica pentru zonele delimitate ca situri arheologice																										
8	Identificarea retelelor de utilitati																										
9	Documentatia pentru obtinerea avizelor/acordurilor/autorizatii sunt elaborate si transmise in vederea obtinerii avizelor/acordurilor/autorizatiilor																										
10	Activitati necesare implementarii Planului de Actiune pentru Promovarea Contractului - Panourile pentru afisare temporara sunt proiectate si instalate																										
11	Programul de Executie detaliat al intregului Contract, in care activitatile si resursele aferente executiei Lucrarilor vor fi prezentate la un nivel de detaliu adaptat, este finalizat si acceptat de catre Supervisor, devenind astfel Programul de																										
12	<b>Punct de referinta nr. 2</b>																										
13	<b>Punctul de referinta nr. 1 este indeplinit in totalitate</b>																										
14	Avizele/acordurile/autorizatiile sunt obtinute si sunt favorabile																										
15	Predare la Supervisor si Beneficiar, Proiect pentru Autorizarea Lucrarilor de Constructie (PAC), in conformitate cu Legea 10/1995 (documentatie vizata de verificator proiect atestat)																										
16	Studii de teren - Finalizare raport studiu geotehnic																										
17	Studii de teren - Finalizare raport studiu geologic																										
18	Studii de teren - Finalizare raport studii hidrologice si hidrogeotehnice																										
19	Studii de teren - Finalizare raport studii topografice si de stabilitate ale terenului																										
20	<b>Punct de referinta nr. 3</b>																										
21	<b>Punctul de referinta nr. 2 este indeplinit in totalitate</b>																										
22	Proiectul pentru autorizarea lucrarilor de constructie (PAC) este aprobat de catre Supervisor																										
23	<b>Punct de referinta nr. 4</b>																										
24	<b>Punctul de referinta nr. 3 este indeplinit in totalitate</b>																										
25	Proiectul Tehnic de Executie si Detaliile de Executie sunt predate la Supervisor si Beneficiar, in conformitate cu Legea 10/1995 (documentatie vizata de verificator proiect atestat)																										
26	Autorizatie de Construire a fost obtinuta																										
27	<b>Punct de referinta nr. 5</b>																										
28	<b>Punctul de referinta nr. 4 este indeplinit in totalitate</b>																										

3A2 - Nadaselu - Mihaiesti si 3B1 - Mihaiesti - Zimbor Date: Tue 2/23/21	Task		Project Summary	Inactive Milestone	Manual Summary Rollup		Deadline	
	Split		External Tasks	Inactive Summary	Manual Summary		Progress	
	Milestone		External Milestone	Manual Task		Start-only		Manual Progress
	Summary		Inactive Task	Duration-only		Finish-only		



ID	Task Task Name Mod.	2024												2025												2026	
		Qtr 1, 2024			Qtr 2, 2024			Qtr 3, 2024			Qtr 4, 2024			Qtr 1, 2025			Qtr 2, 2025			Qtr 3, 2025			Qtr 4, 2025		Qtr 1, 2026		
		Jan	Feb	Mar	Apr	May	Jun	Jul	Aug	Sep	Oct	Nov	Dec	Jan	Feb	Mar	Apr	May	Jun	Jul	Aug	Sep	Oct	Nov	Dec	Jan	Feb
29	Activitatea de cercetare arheologica preventiva in vederea descarcarii de sarcina arheologica pentru zonele delimitate ca situri arheologice este finalizata																										
30	Proiectul Tehnic de Executie si Detaliile de Executie sunt aprobate de Supervizor																										
31	<b>Organizarea de Santier a Antreprenorului este finalizata si fun</b>																										
32	Tot personalul cheie al Antreprenorului este mobilizat in Santier																										
33	Noul Program de Executie detaliat al intregului Contract, cu prezentarea activitatilor si resurselor aferente executiei Lucrarilor;precum si, noul Program de Executie completat/corectat este acceptat de catre Supervizor, devenind																										
34	Toate utilajele, echipamentele, resursele tehnice si materiale ale Antreprenorului asa cum sunt mentionate in Programul de Executie/Referinta sunt mobilizate																										
35	Jurnal de Santier este constituit de catre Antreprenor conform Clauzei 39-Conditiile Generale, in formatul agreat de Supervizor																										
36	<b>Laboratorul Antreprenorului de analize si incercari in constructii este asigurat conform Cerintelor Beneficiarului, Sub-Cap.9.27-Laboratorul de pe santier</b>																										
37	Planul General de Management este aprobat de catre Supervizor si Beneficiar																										
38	Planul de Management de Mediu este aprobat de Supervizorul																										
39	<b>ETAPA DE EXECUTIE A CONTRACTULUI [ INCLUSIV NOTIFICARI, INSPECTII SI TESTARI, in conformitate cu Cerintelor Beneficiarului, stipulate contractual si ASISTENTA</b>																										
40	Punctul de referinta nr. 5 este indeplinit in totalitate																										
41	Organizare DE SANTIER																										
42	<b>LUCRARI DE DRUM</b>																										
43	<b>Terasamente</b>																										
44	Terasamente																										
45	Decapare pamant vegetal																										
46	Curatire si defrisare																										
47	Sapatura de pamant in corp drum																										
48	Umplutura cu pamant																										
49	Imbracare taluze cu pamant vegetal																										
50	<b>Structura rutiera</b>																										
51	Strat de forma																										
52	Fundatie de balast																										
53	Strat din agregate naturale stabilizate																										
54	Strat de baza din mixtura asfaltica																										
55	Strat de legatura - Binder cu bitum modificat BAD 25																										
56	Strat de uzura - Mixtura asfaltica cu fibre si bitum modificat, MAS16																										
57	<b>Lucrari de drenaj (santuri, rigole, casiuri)</b>																										
58	Lucrari de drenaj																										
59	<b>Parapete si imprejmuiri [lucrari de drum]</b>																										
60	Parapeti de siguranta rutiera																										

3A2 - Nadaselu - Mihaiesti si 3B1 - Mihaiesti - Zimbor Date: Tue 2/23/21	Task		Project Summary	Inactive Milestone	Manual Summary Rollup		Deadline
	Split		External Tasks	Inactive Summary	Manual Summary		Progress
	Milestone		External Milestone	Manual Task	Start-only		Manual Progress
	Summary		Inactive Task	Duration-only	Finish-only		



ID	Task Task Name Mod:	2024												2025												2026	
		Qtr 1, 2024			Qtr 2, 2024			Qtr 3, 2024			Qtr 4, 2024			Qtr 1, 2025			Qtr 2, 2025			Qtr 3, 2025			Qtr 4, 2025		Qtr 1, 2026		
		Jan	Feb	Mar	Apr	May	Jun	Jul	Aug	Sep	Oct	Nov	Dec	Jan	Feb	Mar	Apr	May	Jun	Jul	Aug	Sep	Oct	Nov	Dec	Jan	Feb
61	Semnalizare rutiera	emnalizare rutiera																									
62	Semnalizare rutiera	utobasculanta[12%],Excavator[10%],Muncitori calificati[800%],Muncitori necalificati[12,000%],Instalatie preparat beton[10%],Autobetoniera[30%],Pompa beton[10%],Macara[5%]																									
63	<b>LUCRARI DE CONSOLIDARE</b>																										
64	Lucrari consolidare	rat coloane[34%],Muncitori calificati[140%],Muncitori necalificati[160%],Autobetoniera[30%],Pompa beton[22%],Instalatie preparat beton[12%]																									
65	<b>LUCRARI DE ARTA</b>	<b>LUCRARI DE ARTA</b>																									
66	<b>1. Viaduct km 9+213</b>	<b>1. Viaduct km 9+213</b>																									
67	Lucrari de infrastructura - Fundatii pile si culei	betoniera,Cisterna apa[10%],Muncitori calificati,Muncitori necalificati[500%],Pompa beton[18%],Instalatie preparat beton[30%],Instalatie forat coloane[89%],Macara[53%]																									
68	Lucrari de infrastructura - Elevatii pile si culei	eparat beton[6%],Cisterna apa[10%],Muncitori calificati,Muncitori necalificati[700%],Pompa beton[25%],Macara[33%]																									
69	Structura de rezistenta	iera[43%],Cisterna apa[9%],Macara[21%],Muncitori calificati[85%],Muncitori necalificati[510%],Pompa beton[21%],Instalatie preparat beton[20%]																									
70	Racordari cu terasamentele	Autobasculanta[200%],Autobetoniera,Buldoexcavator,Cilindru compactor pamant,Muncitori calificati,Muncitori necalificati,Pompa beton[10%],Instalatie preparat beton[10%],																									
71	cale+trotuar+parapet	Autobetoniera[50%],Muncitori calificati[300%],Muncitori necalificati[500%],Soneta parapete,Excavator,Cilindru compactor asfalt[10%],Instalatie preparat mixtura[10%],Autobascul																									
72	<b>2. Pasaj km 10+080</b>																										
73	Lucrari de infrastructura - Fundatii pile si culei	%),Instalatie preparat beton[10%],Instalatie forat coloane[93%]																									
74	Lucrari de infrastructura - Elevatii pile si culei	%),Pompa beton[46%],Macara[93%]																									
75	Structura de rezistenta	[600%],Pompa beton[25%],Instalatie preparat beton[25%]																									
76	Racordari cu terasamentele	muncitori necalificati,Pompa beton[10%],Instalatie preparat beton[10%]																									
77	cale+trotuar+parapet	avator[20%],Cilindru compactor asfalt[10%],Instalatie preparat mixtura[10%],Repartizator asfalt[21%]																									
78	<b>3. Viaduct km 11+560</b>																										
79	Lucrari de infrastructura - Fundatii pile si culei	0%],Pompa beton[20%],Instalatie preparat beton[14%],Instalatie forat coloane[41%]																									
80	Lucrari de infrastructura - Elevatii pile si culei	,Pompa beton[21%],Macara[42%]																									
81	Structura de rezistenta	mncitori necalificati[600%],Pompa beton[25%],Instalatie preparat beton[25%]																									
82	Racordari cu terasamentele	t[89%],Muncitori calificati[89%],Muncitori necalificati[89%],Pompa beton[9%],Instalatie preparat beton[9%]																									
83	cale+trotuar+parapet	38%],Buldoexcavator[15%],Cilindru compactor asfalt[8%],Instalatie preparat mixtura[8%],Repartizator asfalt[10%]																									
84	<b>4. Viaduct km 12+143</b>																										
85	Lucrari de infrastructura - Fundatii pile si culei	ati[500%],Pompa beton[10%],Instalatie preparat beton[9%],Instalatie forat coloane[31%]																									
86	Lucrari de infrastructura - Elevatii pile si culei	necalificati[700%],Pompa beton[25%],Macara[50%]																									
87	Structura de rezistenta	cati,Muncitori necalificati[600%],Pompa beton[25%],Instalatie preparat beton[25%]																									
88	Racordari cu terasamentele	oniera,Buldoexcavator,Cilindru compactor pamant,Muncitori calificati,Muncitori necalificati,Pompa beton[10%],Instalatie preparat beton[10%]																									
89	cale+trotuar+parapet	ificati[300%],Muncitori necalificati[500%],Pompa beton[50%],Buldoexcavator[20%],Cilindru compactor asfalt[10%],Instalatie preparat mixtura[6%],Repartizator asfalt[13%]																									
90	<b>5. Pod km 12+987</b>																										
91	Lucrari de infrastructura - Fundatii pile si culei	cati[1,050%],Pompa beton[21%],Instalatie preparat beton[11%],Instalatie forat coloane[33%]																									
92	Lucrari de infrastructura - Elevatii pile si culei	lificati[700%],Pompa beton[25%],Macara[50%]																									
93	Structura de rezistenta	lificati[108%],Muncitori necalificati[646%],Pompa beton[27%],Instalatie preparat beton[14%]																									
94	Racordari cu terasamentele	oniera,Buldoexcavator,Cilindru compactor pamant,Muncitori calificati,Muncitori necalificati,Pompa beton[10%],Instalatie preparat beton[10%]																									
95	cale+trotuar+parapet	calificati[300%],Muncitori necalificati[563%],Pompa beton[56%],Buldoexcavator[23%],Cilindru compactor asfalt[11%],Instalatie preparat mixtura[11%],Repartizator asfalt[13%]																									
96	<b>6. Pasaj inferior km 13+881</b>																										
97	Lucrari de infrastructura - Fundatii pile si culei	Pompa beton[10%],Instalatie preparat beton[10%],Instalatie forat coloane[10%]																									
98	Lucrari de infrastructura - Elevatii pile si culei	10%],Instalatie preparat beton[10%]																									
99	Structura de rezistenta	cati[600%],Instalatie preparat beton[10%]																									
100	Racordari cu terasamentele	00%],Instalatie preparat beton[25%]																									
101	cale+trotuar+parapet	avator[50%],Cilindru compactor asfalt[50%],Instalatie preparat beton[10%],Instalatie preparat mixtura[10%],Repartizator asfalt[25%]																									
102	<b>7. Pod km 14+110</b>																										
103	Lucrari de infrastructura - Fundatii pile si culei	lificati[600%],Pompa beton[10%],Instalatie preparat beton[10%],Instalatie forat coloane[7%]																									
104	Lucrari de infrastructura - Elevatii pile si culei	600%],Pompa beton[10%],Instalatie preparat beton[10%]																									

3A2 - Nadaselu - Mihaiesti si 3B1 - Mihaiesti - Zimbor Date: Tue 2/23/21	Task		Project Summary		Inactive Milestone		Manual Summary Rollup		Deadline
	Split		External Tasks		Inactive Summary		Manual Summary		Progress
	Milestone		External Milestone		Manual Task		Start-only		Manual Progress
	Summary		Inactive Task		Duration-only		Finish-only		



ID	Task Mod	Task Name	2024				2025				2026															
			Qtr 1, 2024		Qtr 2, 2024		Qtr 3, 2024		Qtr 4, 2024		Qtr 1, 2025		Qtr 2, 2025		Qtr 3, 2025		Qtr 4, 2025		Qtr 1, 2026							
			Jan	Feb	Mar	Apr	May	Jun	Jul	Aug	Sep	Oct	Nov	Dec	Jan	Feb	Mar	Apr	May	Jun	Jul	Aug	Sep	Oct	Nov	Dec
105		Structura de rezistenta	pa[12%],Macara[58%],Muncitori calificati[117%],Muncitori necalificati[700%],Instalatie preparat beton[12%]																							
106		Racordari cu terasamentele	sterna apa[21%],Muncitori calificati,Muncitori necalificati[400%],Instalatie preparat beton[17%]																							
107		cale+trotuar+parapet	uncitori necalificati[600%],Pompa beton[50%],Buldoexcavator[50%],Cilindru compactor asfalt[50%],Instalatie preparat beton[10%],Instalatie preparat mixtura[10%],Repartizator asfal																							
108		<b>8. Viaduct km 14+609</b>																								
109		Lucrari de infrastructura - Fundatii pile si culei	ri necalificati[517%],Pompa beton[9%],Instalatie preparat beton[9%],Instalatie forat coloane[24%]																							
110		Lucrari de infrastructura - Elevatii pile si culei	e preparat beton[10%]																							
111		Structura de rezistenta	ti[600%],Instalatie preparat beton[10%]																							
112		Racordari cu terasamentele	ficati[400%],Instalatie preparat beton[25%]																							
113		cale+trotuar+parapet	excavator[50%],Cilindru compactor asfalt[50%],Instalatie preparat beton[10%],Instalatie preparat mixtura[10%],Repartizator asfalt[13%]																							
114		<b>9. Pod km 16+227</b>	7																							
115		Lucrari de infrastructura - Fundatii pile si culei	lificati,Muncitori necalificati[600%],Pompa beton[10%],Instalatie preparat beton[10%]																							
116		Lucrari de infrastructura - Elevatii pile si culei	],Muncitori calificati,Muncitori necalificati[600%],Pompa beton[10%],Instalatie preparat beton[10%]																							
117		Structura de rezistenta	nta,Cisterna apa[10%],Macara[50%],Muncitori calificati,Muncitori necalificati[600%],Instalatie preparat beton[10%]																							
118		Racordari cu terasamentele	00%],Autobetoniera,Cisterna apa[50%],Muncitori calificati,Muncitori necalificati[400%],Instalatie preparat beton[25%]																							
119		cale+trotuar+parapet	%],Muncitori calificati[400%],Muncitori necalificati[600%],Pompa beton[50%],Buldoexcavator[50%],Cilindru compactor asfalt[50%],Instalatie preparat beton[10%],Instalatie preparat																							
120		<b>10. Pod km 17+589</b>																								
121		Lucrari de infrastructura - Fundatii pile si culei	%],Pompa beton[2%],Instalatie preparat beton[2%],Instalatie forat coloane[7%]																							
122		Lucrari de infrastructura - Elevatii pile si culei	Instalatie preparat beton[10%]																							
123		Structura de rezistenta	:ati[600%],Instalatie preparat beton[10%]																							
124		Racordari cu terasamentele	icati[400%],Instalatie preparat beton[25%]																							
125		cale+trotuar+parapet	xcavator[50%],Cilindru compactor asfalt[50%],Instalatie preparat beton[10%],Instalatie preparat mixtura[10%],Repartizator asfalt[19%]																							
126		<b>11. Pod km 18+223</b>																								
127		Lucrari de infrastructura - Fundatii pile si culei	i],Instalatie preparat beton[10%],Instalatie forat coloane[32%]																							
128		Lucrari de infrastructura - Elevatii pile si culei	: beton [10%]																							
129		Structura de rezistenta	arat beton[10%]																							
130		Racordari cu terasamentele	on[25%]																							
131		cale+trotuar+parapet	actor asfalt[50%],Instalatie preparat beton[10%],Instalatie preparat mixtura[10%],Repartizator asfalt[50%]																							
132		<b>12. Pod km 18+500</b>																								
133		Lucrari de infrastructura - Fundatii pile si culei	on[3%],Instalatie preparat beton[3%],Instalatie forat coloane[29%]																							
134		Lucrari de infrastructura - Elevatii pile si culei	rat beton[10%]																							
135		Structura de rezistenta	eparat beton[10%]																							
136		Racordari cu terasamentele	eton[25%]																							
137		cale+trotuar+parapet	mpactor asfalt[50%],Instalatie preparat beton[10%],Instalatie preparat mixtura[10%],Repartizator asfalt[50%]																							
138		<b>13. Pod km 18+845</b>																								
139		Lucrari de infrastructura - Fundatii pile si culei	mpa beton[10%],Instalatie preparat beton[10%],Instalatie forat coloane[10%]																							
140		Lucrari de infrastructura - Elevatii pile si culei	eton[10%],Instalatie preparat beton[10%]																							
141		Structura de rezistenta	ri necalificati[600%],Instalatie preparat beton[10%]																							
142		Racordari cu terasamentele	alificati[400%],Instalatie preparat beton[25%]																							
143		cale+trotuar+parapet	,Buldoexcavator[50%],Cilindru compactor asfalt[50%],Instalatie preparat beton[10%],Instalatie preparat mixtura[10%],Repartizator asfalt[25%]																							
144		<b>14. Pod km 20+088</b>																								
145		Lucrari de infrastructura - Fundatii pile si culei	ti[600%],Pompa beton[10%],Instalatie preparat beton[10%],Instalatie forat coloane[3%]																							
146		Lucrari de infrastructura - Elevatii pile si culei	'ompa beton[10%],Instalatie preparat beton[10%]																							
147		Structura de rezistenta	cati,Muncitori necalificati[600%],Instalatie preparat beton[10%]																							
148		Racordari cu terasamentele	,Muncitori necalificati[800%],Instalatie preparat beton[25%]																							

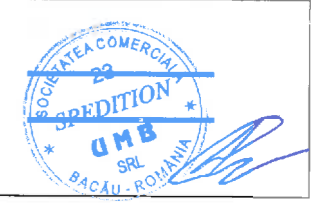
3A2 - Nadaselu - Mihaiesti si 3B1 - Mihaiesti - Zimbor Date: Tue 2/23/21	Task		Project Summary	Inactive Milestone	Manual Summary Rollup		Deadline
	Split		External Tasks	Inactive Summary	Manual Summary		Progress
	Milestone		External Milestone	Manual Task			Manual Progress
	Summary		Inactive Task	Duration-only			



ID	Task Task Name Mod	2024				2025				2026															
		Qtr 1, 2024		Qtr 2, 2024		Qtr 3, 2024		Qtr 4, 2024		Qtr 1, 2025		Qtr 2, 2025		Qtr 3, 2025		Qtr 4, 2025		Qtr 1, 2026							
		Jan	Feb	Mar	Apr	May	Jun	Jul	Aug	Sep	Oct	Nov	Dec	Jan	Feb	Mar	Apr	May	Jun	Jul	Aug	Sep	Oct	Nov	Dec
149	cale+trotuar+parapet	[50%], Buldoexcavator[50%], Cilindru compactor asfalt[50%], Instalatie preparat beton[10%], Instalatie preparat mixtura[10%], Repartizator asfalt[15%]																							
150	<b>15. Pod km 21+314</b>																								
151	Lucrari de infrastructura - Fundatii pile si culei	mpa beton[10%], Instalatie preparat beton[10%], Instalatie forat coloane[7%]																							
152	Lucrari de infrastructura - Elevatii pile si culei	ton[10%], Instalatie preparat beton[10%]																							
153	Structura de rezistenta	ri necalificati[600%], Instalatie preparat beton[10%]																							
154	Racordari cu terasamentele	i necalificati[400%], Instalatie preparat beton[25%]																							
155	cale+trotuar+parapet	%, Buldoexcavator[50%], Cilindru compactor asfalt[50%], Instalatie preparat beton[10%], Instalatie preparat mixtura[10%], Repartizator asfalt[19%]																							
156	<b>16. Pod km 22+609</b>																								
157	Lucrari de infrastructura - Fundatii pile si culei	necalificati[600%], Pompa beton[10%], Instalatie preparat beton[10%], Instalatie forat coloane[9%]																							
158	Lucrari de infrastructura - Elevatii pile si culei	ati[600%], Pompa beton[10%], Instalatie preparat beton[10%]																							
159	Structura de rezistenta	i[10%], Macara[50%], Muncitori calificati, Muncitori necalificati[600%], Instalatie preparat beton[10%]																							
160	Racordari cu terasamentele	i, Cisterna apa[50%], Muncitori calificati, Muncitori necalificati[400%], Instalatie preparat beton[25%]																							
161	cale+trotuar+parapet	Muncitori necalificati[600%], Pompa beton[50%], Buldoexcavator[50%], Cilindru compactor asfalt[50%], Instalatie preparat beton[10%], Instalatie preparat mixtura[10%], Repartizator asfalt[15%]																							
162	<b>17. Pod km 23+821</b>																								
163	Lucrari de infrastructura - Fundatii pile si culei	], Cisterna apa[20%], Excavator[200%], Muncitori calificati, Muncitori necalificati[600%], Pompa beton[10%], Instalatie preparat beton[10%], Instalatie forat coloane[7%]																							
164	Lucrari de infrastructura - Elevatii pile si culei	a[10%], Macara[10%], Muncitori calificati, Muncitori necalificati[600%], Pompa beton[10%], Instalatie preparat beton[10%]																							
165	5065883.66	isterna apa[10%], Macara[50%], Muncitori calificati, Muncitori necalificati[600%], Instalatie preparat beton[10%]																							
166	Racordari cu terasamentele	utobetoniera, Cisterna apa[50%], Muncitori calificati, Muncitori necalificati[400%], Instalatie preparat beton[25%]																							
167	cale+trotuar+parapet	i calificati, Muncitori necalificati[600%], Pompa beton[50%], Buldoexcavator[50%], Cilindru compactor asfalt[50%], Instalatie preparat beton[10%], Instalatie preparat mixtura[10%], Repartizator asfalt[15%]																							
168	<b>18. Pasaj pe D.E peste autostrada km 0+880,</b>																								
169	Lucrari la infrastructura - fundatii	%, Instalatie preparat beton[10%], Instalatie forat coloane[13%]																							
170	Lucrari la infrastructura -elevatii	t beton[10%]																							
171	Lucrari la suprastructura	at beton[10%]																							
172	Racordari cu terasamentele	6]																							
173	cale+trotuar+parapet	falt[50%], Instalatie preparat beton[10%], Instalatie preparat mixtura[10%], Repartizator asfalt[13%]																							
174	<b>19. Viaduct pe autostrada peste paraul Borlacului, km 1+360 - km 1+721.40</b>																								
175	Lucrari la infrastructura - fundatii	, Pompa beton[10%], Instalatie preparat beton[10%], Instalatie forat coloane[2%]																							
176	Lucrari la infrastructura -elevatii	alificati[600%], Pompa beton[10%], Instalatie preparat beton[10%]																							
177	Lucrari la suprastructura	obasculanta, Cisterna apa[10%], Macara[50%], Muncitori calificati, Muncitori necalificati[600%], Instalatie preparat beton[10%]																							
178	Racordari cu terasamentele	etoniera, Cisterna apa[50%], Muncitori calificati, Muncitori necalificati[400%], Instalatie preparat beton[25%]																							
179	cale+trotuar+parapet	%, Muncitori calificati, Muncitori necalificati[600%], Pompa beton[50%], Buldoexcavator[50%], Cilindru compactor asfalt[50%], Instalatie preparat beton[10%], Instalatie preparat mixtura[10%], Repartizator asfalt[15%]																							
180	<b>20. Viaduct pe autostrada peste afluent Valea Pustei, km 1+870.36 - km 2+231.78</b>																								
181	Lucrari la infrastructura - fundatii	Pompa beton[10%], Instalatie preparat beton[10%], Instalatie forat coloane[2%]																							
182	Lucrari la infrastructura -elevatii	10%], Muncitori calificati, Muncitori necalificati[600%], Pompa beton[10%], Instalatie preparat beton[10%]																							
183	Lucrari la suprastructura	utobasculanta, Cisterna apa[10%], Macara[50%], Muncitori calificati, Muncitori necalificati[600%], Instalatie preparat beton[10%]																							
184	Racordari cu terasamentele	oniera, Cisterna apa[50%], Muncitori calificati, Muncitori necalificati[400%], Instalatie preparat beton[25%]																							
185	cale+trotuar+parapet	50%], Muncitori calificati, Muncitori necalificati[600%], Pompa beton[50%], Buldoexcavator[50%], Cilindru compactor asfalt[50%], Instalatie preparat beton[10%], Instalatie preparat mixtura[10%], Repartizator asfalt[15%]																							
186	<b>21. Pasaj pe drum de exploatare peste autostrada - km 3+715</b>																								
187	Lucrari la infrastructura - fundatii	n[10%], Instalatie preparat beton[10%], Instalatie forat coloane[10%]																							
188	Lucrari la infrastructura -elevatii	eparat beton[10%]																							
189	Lucrari la suprastructura	eparat beton[10%]																							
190	Racordari cu terasamentele	i[25%]																							

3A2 - Nadaselu - Mihaiesti si  
3B1 - Mihaiesti - Zimbor  
Date: Tue 2/23/21

Task		Project Summary	Inactive Milestone	Manual Summary Rollup		Deadline
Split		External Tasks	Inactive Summary	Manual Summary		Progress
Milestone		External Milestone	Manual Task	Start-only		Manual Progress
Summary		Inactive Task	Duration-only	Finish-only		



ID	Task Task Name Mod	2024				2025				2026															
		Qtr 1, 2024		Qtr 2, 2024		Qtr 3, 2024		Qtr 4, 2024		Qtr 1, 2025		Qtr 2, 2025		Qtr 3, 2025		Qtr 4, 2025		Qtr 1, 2026							
		Jan	Feb	Mar	Apr	May	Jun	Jul	Aug	Sep	Oct	Nov	Dec	Jan	Feb	Mar	Apr	May	Jun	Jul	Aug	Sep	Oct	Nov	Dec
191	cale+trotuar+parapet	tor asfalt[50%],Instalatie preparat beton[10%],Instalatie preparat mixtura[10%],Repartizator asfalt[25%]																							
192	<b>22. Viaduct pe autostrada peste Valea Pustei, km 4+085.61 - km 4+607.03</b>	Pustei, km 4+085.61 - km 4+607.03																							
193	Lucrari la infrastructura - fundatii	beton[10%],Instalatie preparat beton[10%],Instalatie forat coloane[3%]																							
194	Lucrari la infrastructura -elevatii	beton[10%],Instalatie preparat beton[10%]																							
195	Lucrari la suprastructura	],Macara[50%],Muncitori calificati,Muncitori necalificati[600%],Instalatie preparat beton[10%]																							
196	Racordari cu terasamentele	isterna apa[50%],Muncitori calificati,Muncitori necalificati[400%],Instalatie preparat beton[25%]																							
197	cale+trotuar+parapet	Muncitori necalificati[600%],Pompa beton[50%],Buldoexcavator[50%],Cilindru compactor asfalt[50%],Instalatie preparat beton[10%],Instalatie preparat mixtura[10%],Repartizator asfalt[25%]																							
198	<b>23. Viaduct pe autostrada peste Valea Bobii, km 5+360 - km 5+360 - km 5+603.50</b>	km 5+360 - km 5+603.50																							
199	Lucrari la infrastructura - fundatii	beton[10%],Instalatie preparat beton[10%],Instalatie forat coloane[3%]																							
200	Lucrari la infrastructura -elevatii	ton[10%],Instalatie preparat beton[10%]																							
201	Lucrari la suprastructura	Muncitori necalificati[600%],Instalatie preparat beton[10%]																							
202	Racordari cu terasamentele	ificati[400%],Instalatie preparat beton[25%]																							
203	cale+trotuar+parapet	necalificati[21%],Pompa beton[50%],Buldoexcavator[50%],Cilindru compactor asfalt[50%],Instalatie preparat beton[10%],Instalatie preparat mixtura[10%],Repartizator asfalt[25%]																							
204	<b>24. Viaduct pe autostrada peste paraul Silistea, km 7+124 - km 7+725.50</b>	km 7+124 - km 7+725.50																							
205	Lucrari la infrastructura - fundatii	n[10%],Instalatie preparat beton[10%],Instalatie forat coloane[3%]																							
206	Lucrari la infrastructura -elevatii	n[10%],Instalatie preparat beton[10%]																							
207	Lucrari la suprastructura	calificati[600%],Instalatie preparat beton[10%]																							
208	Racordari cu terasamentele	alatie preparat beton[25%]																							
209	cale+trotuar+parapet	.Buldoexcavator[50%],Cilindru compactor asfalt[50%],Instalatie preparat beton[10%],Instalatie preparat mixtura[10%],Repartizator asfalt[25%]																							
210	<b>25. Pasaj pe autostrada peste DC58, KM 12+427 - km 12+445.1</b>	km 12+427 - km 12+445.1																							
211	Lucrari la infrastructura - fundatii	pa beton[10%],Instalatie preparat beton[10%],Instalatie forat coloane[7%]																							
212	Lucrari la infrastructura -elevatii	i],Instalatie preparat beton[10%]																							
213	Lucrari la suprastructura	ealificati[600%],Instalatie preparat beton[10%]																							
214	Racordari cu terasamentele	talatie preparat beton[25%]																							
215	cale+trotuar+parapet	excavator[50%],Cilindru compactor asfalt[50%],Instalatie preparat beton[10%],Instalatie preparat mixtura[10%],Repartizator asfalt[25%]																							
216	<b>26. Pod pe autostrada peste Paraul Almas, km 12+544 - km 12+544</b>	km 12+544 - km 12+544																							
217	Lucrari la infrastructura - fundatii	mpa beton[10%],Instalatie preparat beton[10%],Instalatie forat coloane[6%]																							
218	Lucrari la infrastructura -elevatii	[10%],Instalatie preparat beton[10%]																							
219	Lucrari la suprastructura	lificati[600%],Instalatie preparat beton[10%]																							
220	Racordari cu terasamentele	talatie preparat beton[25%]																							
221	cale+trotuar+parapet	[50%],Cilindru compactor asfalt[50%],Instalatie preparat beton[10%],Instalatie preparat mixtura[10%],Repartizator asfalt[25%]																							
222	<b>27. Pasaj pe autostrada peste Bretea, km 12+787 - km 12+808.</b>	km 12+787 - km 12+808.																							
223	Lucrari la infrastructura - fundatii	.10%],Instalatie preparat beton[10%],Instalatie forat coloane[7%]																							
224	Lucrari la infrastructura -elevatii	e preparat beton[10%]																							
225	Lucrari la suprastructura	500%],Instalatie preparat beton[10%]																							
226	Racordari cu terasamentele	atie preparat beton[25%]																							
227	cale+trotuar+parapet	[50%],Cilindru compactor asfalt[50%],Instalatie preparat beton[10%],Instalatie preparat mixtura[10%],Repartizator asfalt[25%]																							
228	<b>28. Pasaj pe autostrada peste D.N 1G, km 13+105 - km 13+126.</b>	km 13+105 - km 13+126.																							
229	Lucrari la infrastructura - fundatii	Pompa beton[10%],Instalatie preparat beton[10%],Instalatie forat coloane[7%]																							
230	Lucrari la infrastructura -elevatii	10%],Instalatie preparat beton[10%]																							
231	Lucrari la suprastructura	i necalificati[600%],Instalatie preparat beton[10%]																							
232	Racordari cu terasamentele	400%],Instalatie preparat beton[25%]																							

3A2 - Nadaselu - Mihaiesti si 3B1 - Mihaiesti - Zimbor Date: Tue 2/23/21	Task		Project Summary	Inactive Milestone	Manual Summary Rollup		Deadline
	Split		External Tasks	Inactive Summary	Manual Summary		Progress
	Milestone		External Milestone	Manual Task	Start-only		Manual Progress
	Summary		Inactive Task	Duration-only	Finish-only		



ID	Task Task Name Mod	2024				2025				2026															
		Qtr 1, 2024		Qtr 2, 2024		Qtr 3, 2024		Qtr 4, 2024		Qtr 1, 2025		Qtr 2, 2025		Qtr 3, 2025		Qtr 4, 2025		Qtr 1, 2026							
		Jan	Feb	Mar	Apr	May	Jun	Jul	Aug	Sep	Oct	Nov	Dec	Jan	Feb	Mar	Apr	May	Jun	Jul	Aug	Sep	Oct	Nov	Dec
233	cale+trotuar+parapet	Buldoexcavator[50%],Cilindru compactor asfalt[50%],Instalatie preparat beton[10%],Instalatie preparat mixtura[10%],Repartizator asfalt[25%]																							
234	<b>PODETE</b>	3%],Muncitori necalificati[467%],Autobetoniera,Instalatie preparat beton[54%],Macara																							
235	<b>LUCRARI HIDROTEHNICE</b>	Autobasculanta[1,000%],Buldoexcavator[300%],Excavator[600%],Incarcator frontal[200%],Muncitori calificati[1,800%],Muncitori necalificati[2,000%]																							
236	<b>RESTABILIRI LEGATURI RUTIERE</b>																								
237	Restabiliri legaturi rutiere																								
238	Terasamente	50%],Cilindru compactor pamant,Cisterna apa[10%],Muncitori calificati[500%],Muncitori necalificati[500%]																							
239	Structura drumului	Muncitori calificati[600%],Muncitori necalificati[600%]																							
240	Podete	Incarcator frontal,Muncitori calificati[300%],Muncitori necalificati[300%]																							
241	Lucrari de drenaj (santuri, rigole, casiuri)	Incarcator frontal,Muncitori calificati[300%],Muncitori necalificati[300%]																							
242	Parapete si imprejmuiiri	Muncitori calificati[500%]																							
243	Siguranta circulatiei	Muncitori calificati[500%]																							
244	<b>DRUMURI DE INTRETINERE</b>																								
245	Drumuri de intretinere																								
246	Terasamente	Buldoexcavator,Excavator,Autogreder[50%],Cilindru compactor pamant,Cisterna apa[10%],Muncitori calificati[500%],Muncitori necalificati[500%]																							
247	Structura drumului	Cilindru compactor asfalt[120%],Muncitori calificati[600%],Muncitori necalificati[600%]																							
248	Podete	Cilindru compactor pamant,Incarcator frontal,Muncitori calificati[300%],Muncitori necalificati[300%]																							
249	Siguranta circulatiei-porti acces	Muncitori necalificati[400%]																							
250	<b>DRUMURI DE ACCES</b>																								
251	Drumuri de acces																								
252	Terasamente	Autobasculanta[200%],Muncitori calificati[500%],Cilindru compactor pamant,Buldoexcavator,Excavator,Autogreder[50%],Cisterna apa[10%]																							
253	Structura drumului	Cilindru compactor asfalt[120%],Muncitori calificati[600%],Muncitori necalificati[600%]																							
254	Podete	Cilindru compactor pamant,Incarcator frontal,Muncitori calificati[300%],Muncitori necalificati[300%]																							
255	<b>SISTEM DE COMUNICARE ITS</b>	SISTEM DE COMUNICARE ITS																							
256	ITS																								
257	Sistem ITS pe Subsectiunea 3A2: Nadaselu - Mihaiesti, km 8+700 - km 25+500 [conform Anexa 1 - Cerintele Beneficiarului - Specificatii Tehnice sisteme ITS]	Muncitori calificati[5%],Soneta parapete[5%]																							
258	Sistem ITS pe Subsectiunea 3B1: Mihaiesti(Cj) - Zimbor(Sj), km 0+000 - km 13+260 [conform Anexa 1 - Cerintele Beneficiarului - Specificatii Tehnice sisteme ITS]	Muncitori calificati[5%],Soneta parapete[5%]																							
259	<b>NOD RUTIER KM 12+800-ZIMBOR</b>	NOD RUTIER KM 12+800-ZIMBOR																							
260	Nod rutier Zimbor																								
261	Terasamente	Buldoexcavator[400%],Buldoexcavator[200%],Excavator,Autogreder[50%],Cilindru compactor pamant,Cisterna apa[10%],Muncitori calificati[800%],Muncitori necalificati[1,000%]																							
262	Suprastructura drum	Cilindru compactor asfalt[240%],Cilindru compactor asfalt[120%],Muncitori calificati[600%],Muncitori necalificati[600%]																							
263	Podete	Buldoexcavator,Autobasculanta,Cilindru compactor pamant,Incarcator frontal,Muncitori calificati[300%],Muncitori necalificati[300%]																							
264	Lucrari de drenaj (santuri, rigole, casiuri)	Incarcator,Autobasculanta,Cilindru compactor pamant,Incarcator frontal,Muncitori calificati[300%],Muncitori necalificati[300%]																							
265	Parapete si imprejmuiiri	Muncitori calificati[60%],Muncitori calificati,Muncitori necalificati[500%]																							
266	Siguranta circulatiei	Muncitori calificati[50%],Muncitori calificati,Muncitori necalificati[800%]																							
267	<b>ILUMINAT VIADUCTE SI NODURI RUTIERE</b>	Muncitori calificati[205%],Muncitori necalificati[1,027%]																							
268	<b>PARCARE DE SCURTA DURATA - KM 17+800 [stg+dr]</b>																								
269	Parcare scurta durata																								
270	Arhitectura si constructii	Incarcator frontal[10%],Instalatie preparat beton[10%]																							
271	Drumuri si platforme	Incarcator frontal[17%],Instalatie preparat mixtura[3%],Muncitori calificati[418%],Muncitori necalificati[523%],Repartizator asfalt[9%]																							
272	Instalatii si echipamente																								
273	<b>PARCARE DE SCURTA DURATA - KM 10+600 [stg+dr]</b>	PARCARE DE SCURTA DURATA - KM 10+600 [stg+dr]																							

3A2 - Nadaselu - Mihaiesti si 3B1 - Mihaiesti - Zimbor Date: Tue 2/23/21	Task		Project Summary		Manual Summary Rollup		Deadline
	Split		External Tasks		Manual Summary		Progress
	Milestone		External Milestone		Start-only		Manual Progress
	Summary		Inactive Task		Finish-only		



ID	Task Task Name Mod	2024												2025												2026	
		Qtr 1, 2024			Qtr 2, 2024			Qtr 3, 2024			Qtr 4, 2024			Qtr 1, 2025			Qtr 2, 2025			Qtr 3, 2025			Qtr 4, 2025		Qtr 1, 2026		
		Jan	Feb	Mar	Apr	May	Jun	Jul	Aug	Sep	Oct	Nov	Dec	Jan	Feb	Mar	Apr	May	Jun	Jul	Aug	Sep	Oct	Nov	Dec	Jan	Feb
274	Parcare de scurta durata km 10+600																										
275	Arhitectura si constructii																										
276	Drumuri si platforme																										
277	Instalatii si echipamente																										
278	<b>PUNCT DE SPRIJIN PENTRU INTRETINERE - KM 12+920</b>																										
279	Punct de sprijin si intretinere km 12+920																										
280	Arhitectura si constructii																										
281	Drumuri si platforme																										
282	Instalatii si echipamente																										
283	<b>LUCRARI DE PROTECTIA MEDIULUI</b>																										
284	Bazine de sedimentare, de dispersie, fitoepuratoare si separatoare de grasimi, produse petroliere																										
285	Panouri de protectie impotriva zgomotului																										
286	Lucrari de amenajare Peisagistica																										
287	<b>AMENAJAREA TERENULUI</b>																										
288	Lucrari de deviere/mutari/relocari/protejari retele de utilitati																										
289	Finalizare investigatii arheologice - Supraveghere arheologica																										
290	Identificare si curatare teren de munitii neexplodate																										
291	Orice alte activitati necesare amenajarii terenului																										
292	<b>IMPREJMUIRI</b>																										
293	Activitati necesare implementarii Planului de Actiune pentru Promovarea Contractului ( Placi permante, elaborare si publicare articole de presa etc.)																										
294	Probe tehnologice si Teste, inclusiv ptr instalatiile de iluminare rutiera si comunicare autorizate(prezentare raport rezumativ al testelor si operatiunilor de punere in functiune aferente lucrarilor, inclusiv Certificate de																										
295	Predarea documentelor conforme cu executia si a Manualelor de operare si intretinere detaliate, conform																										
296	<b>RECEPTIA LA TERMINAREA LUCRARILOR</b>																										
297	<b>ORGANIZARE DE SANTIER - DEZAFECTARE</b>																										

3A2 - Nadaselu - Mihaiesti si  
3B1 - Mihaiesti - Zimbor  
Date: Tue 2/23/21

Task		Project Summary		Inactive Milestone		Manual Summary Rollup		Deadline
Split		External Tasks		Inactive Summary		Manual Summary		Progress
Milestone		External Milestone		Manual Task		Start-only		Manual Progress
Summary		Inactive Task		Duration-only		Finish-only		Manual Progress

